

## Using the Optional Bobbin Winder

When winding the bobbin thread onto a metal bobbin, use the optional bobbin winder. The procedures for using the optional bobbin winder are described below.

### Precautions

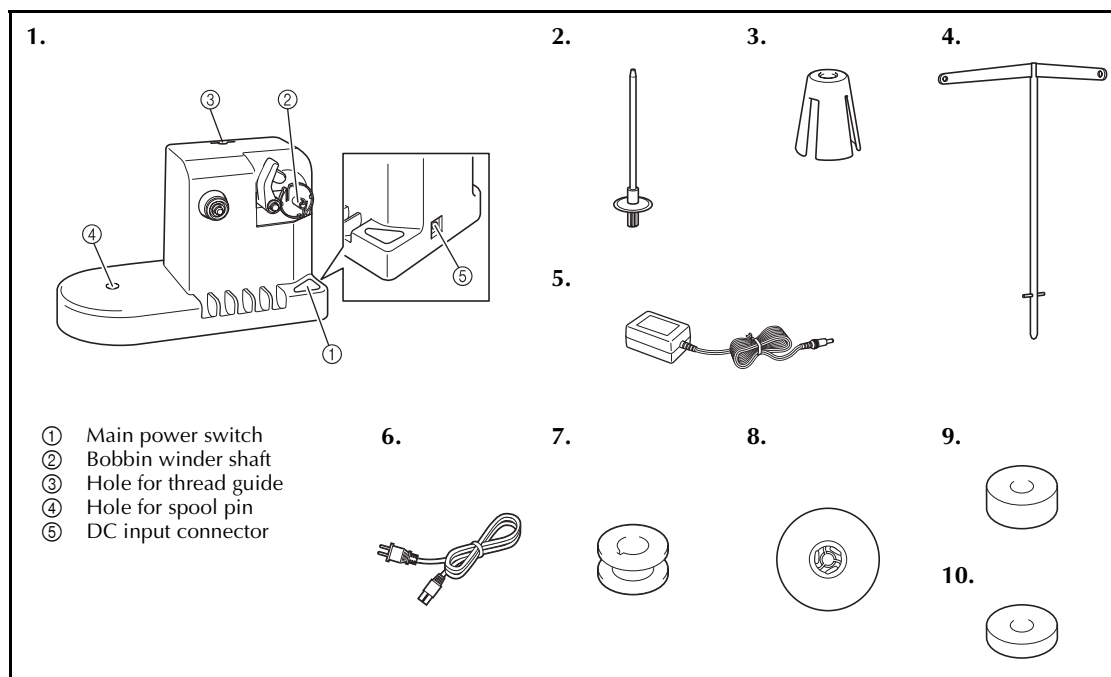
For precautions concerning the power supply, refer to page 34.

### ! CAUTION

- Be sure to place the bobbin winder on a level, stable surface.
- Only use the bobbins supplied with this bobbin winder.

### Optional bobbin winder and its accessories

Check that the following bobbin winder and accessories are included.



No.	Name	Part Code	No.	Name	Part Code
1	Bobbin winder	PRBW1	6	Power supply cord*	—
2	Spool pin	XC5949-051	7	Metal bobbin × 5	100376-053
3	Spool cushion	XA0679-050	8	Spool cap	130012-054
4	Thread guide	XC6644-151	9	Weight (L)	XC5974-151
5	AC adapter*	—	10	Weight (S)	XC6631-051

\* Visit your authorized Brother dealer.

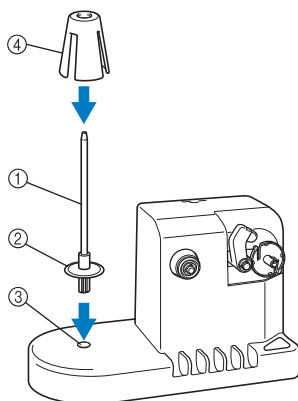
### Memo

- The part code of the bobbin winder set may differ depending on the country/area where the machine was purchased.
- Depending on the model you purchased, the bobbin winder may be included with the machine.

## Setting up the optional bobbin winder

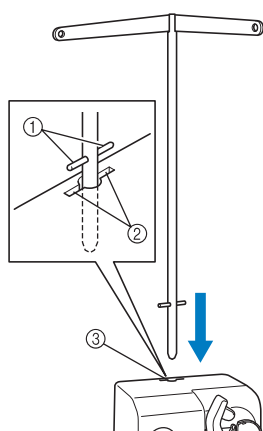
Attach the spool pin, spool cushion and thread guide to the bobbin winder.

- 1 Insert the spool pin and the spool cushion.** Lower the holder, and then insert the spool pin straight into the hole. And insert the spool cushion.



- ① Spool pin
- ② Spool pin holder
- ③ Hole for spool pin
- ④ Spool cushion

- 2 Insert the thread guide.** Insert the thread guide straight into the hole with the pins on the thread guide aligned with the notches on the sides of the hole.

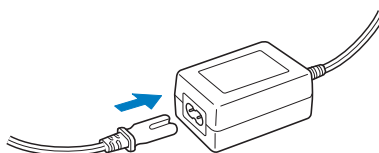


- ① Pins on thread guide
- ② Notches on hole for thread guide
- ③ Hole for thread guide

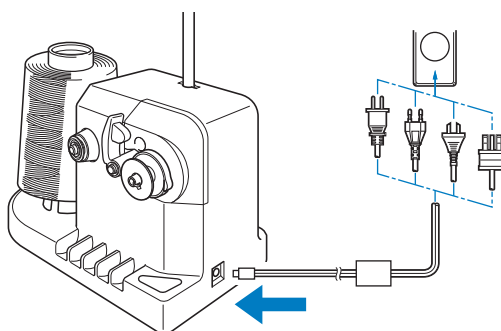
- Firmly insert the thread guide as far as possible and make sure that it is secure.

## Connecting the AC adapter

- 1** Insert the plug of the power supply cord into the AC adapter.



- 2** Plug the cord on the AC adapter into the DC input connector of the bobbin winder, and then insert the plug of the power supply cord into a household electrical outlet.



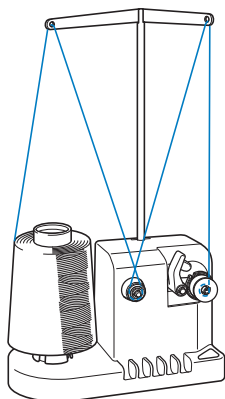
- Be sure to firmly insert the plug on the AC adapter into the DC input connector of the bobbin winder.

### ! CAUTION

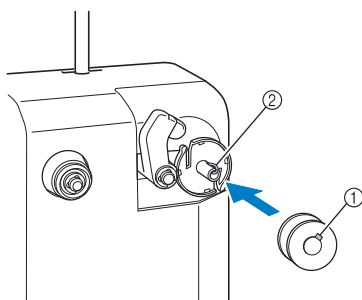
- Be sure to use the included power cord. Using any other power cord may result in damage.
- Be sure to use the included AC adapter. Using any other AC adapter may result in damage.
- Before connecting or disconnecting the AC adapter, be sure that the unit is not operating.
- After using the bobbin winder, disconnect it from the electrical outlet.

## Winding the bobbin

Prepare the bobbin and the spool of bobbin thread. Use cotton or spun polyester bobbin thread (from 74 dtex/2 to 100 dtex/2).

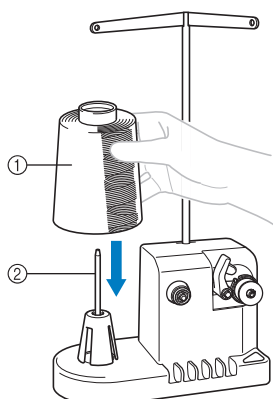


- 1 Align the groove in the bobbin with the spring on the bobbin winder shaft, and set the bobbin on the shaft.



- 1 Groove in the bobbin
- 2 Spring on the shaft

- 2 Set the thread spool on the spool pin.

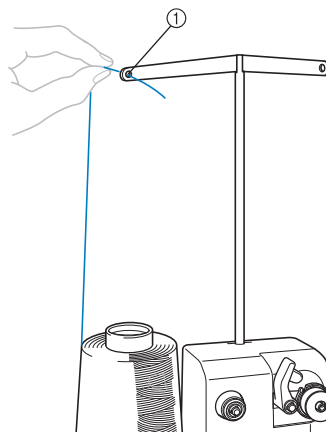


- 1 Thread spool
- 2 Spool pin

## Note

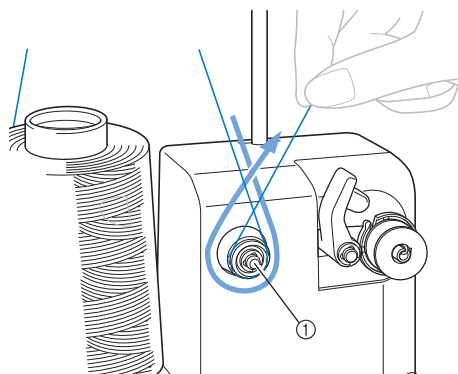
- When using a small spool, remove the spool cushion and set the spool directly onto the spool pin. Also use the included spool cap to keep the small spool stable.

- 3 Pass the thread through the hole in the left of the thread guide toward the front of the winder.



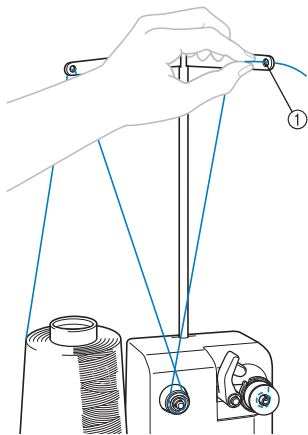
- 1 Hole in the thread guide

- 4 Pass the thread around the tension disc as shown in the illustration. Make sure that the thread is correctly fed into the tension disc.



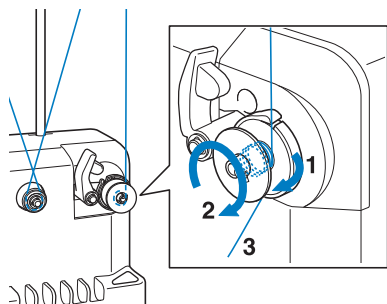
- 1 Tension disc

- 5** Pass the thread through the hole in the right of the thread guide toward the back of the machine.

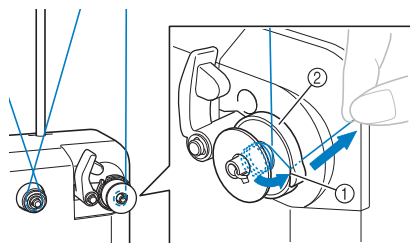


① Hole in the thread guide

- 6** Wind the thread clockwise around the bobbin 4 or 5 times, as shown in the illustration.



- 7** Pass the end of the thread through the guide slit in the bobbin winder seat, and pull the thread. The cutter will cut the thread.

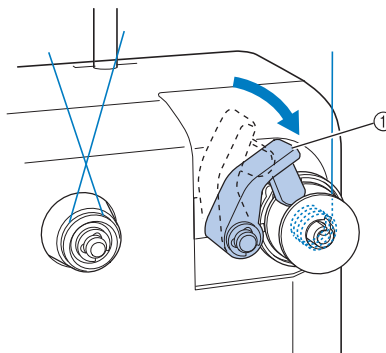


① Guide slit  
② Bobbin winder seat

### Note

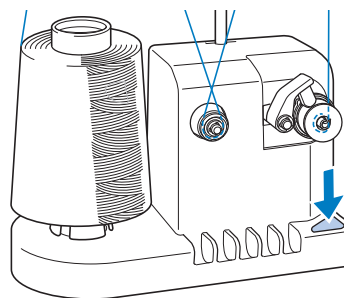
- Be sure to follow the procedure described. If the bobbin is wound without the thread being cut with the cutter, when the bobbin thread runs low, the thread may become tangled around the bobbin and cause the needle to break.

- 8** Slide the bobbin holder, until it clicks into place.



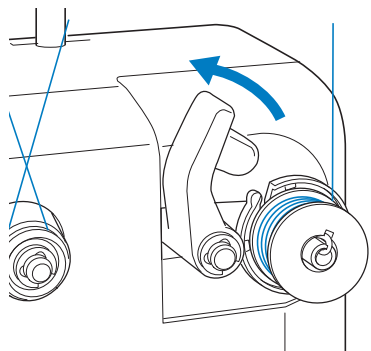
① Bobbin holder

- 9** Press the main power switch to start winding the bobbin.

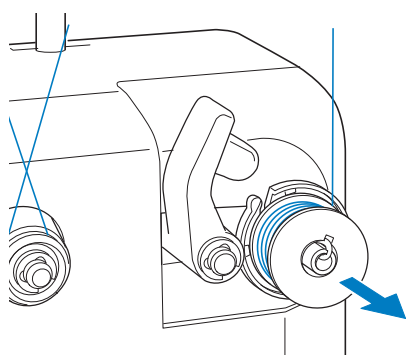


▶ Start winding the bobbin.

- 10** The bobbin will stop rotating automatically when it is done winding, and the bobbin holder will return to its original position.



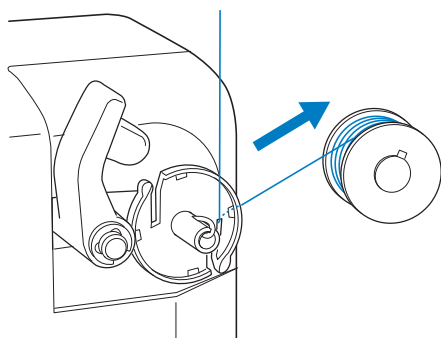
- 11** Remove the bobbin.





### Note

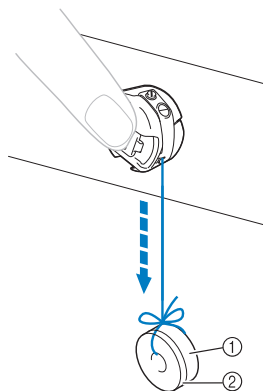
- When removing the bobbin, do not pull on the bobbin winder seat. Doing so could loosen or remove the bobbin winder seat, resulting in damage to the bobbin winder.

- 12** Pull the thread through the guide slit in the bobbin winder seat to cut the thread with the cutter.



## ! CAUTION

- Check that the bobbin thread has been wound correctly, otherwise the needle may break or the thread tension will be incorrect.  
- Be sure to clean the bobbin case each time that the bobbin is changed. Thread wax and dust easily collect around the hole in the tension-adjusting spring on the bobbin case, resulting in an incorrect thread tension. For details, refer to “Cleaning the bobbin case” on page 284.
- Be sure to check the tension of the bobbin thread each time that the bobbin is changed.
- Depending on the bobbin thread type, the tension of the bobbin thread may differ. Be sure to check the tension of the bobbin thread and adjust the tension if necessary. For a metal bobbin, use both weights, large (L) and small (S). For detailed instructions on how to adjust the bobbin tension, refer to page 122.



- ① Weight (L) (Part Code: XC5974-151)  
② Weight (S) (Part Code: XC6631-051)

- **If bobbin winding is stopped before it is finished:**

The bobbin winder stops automatically if the thread does not feed, for example, if it becomes tangled on the spool pin. If this occurs, correctly thread the bobbin winder, and then wind the bobbin correctly.