

ScanNCut DX

brother
at your side

Project Ideas & Instructions for ScanNCut DX

Tips for Bringing Your Craft Ideas to Life



brother
at your side

For more information, call 1.800.4.A.Brother or visit
ScanNCut.com

[f](#) [v](#) [i](#) [p](#) /brothercraftsusa [t](#) /brothercraftsus

Images are for illustrative purposes only. Specifications subject to change.
©2018 Brother International Corporation.

HADSNCDXPROJBK

Want new ideas to spruce up a dining table? Try these easy and colorful coasters.

Decorate your dining table top with new felt coasters. They add a touch of color to your décor, and are easily changed out when you feel like updating your décor.



Tip You can also make coasters by modifying the CanvasProject "Tag" recipe. <http://CanvasWorkspace.brother.com>



Material

Coasters (3.94" square) and pot holder (7.87" square): 11.81" squares of **3-mm felt** (2 colors)

Basket: 11.81" square of 3-mm felt (1 color), 11.81" square of 1- to 2-mm felt (1 color)

Iron-on fabric appliqué contact sheet, tassels, sewing thread, needle, sewing-machine thread, iron, sewing machine

Note: Refer to manufacturer's instructions for the degree of heat resistance of the materials used.

- Accessories sold separately
Iron-on fabric appliqué contact sheet, erasable pen, pen holder

- 1 In CanvasWorkspace, edit the pattern. Create an 11.42" square, and using its size as a guide, create various rectangular parts of random thickness and length like the image #1 shows. Lay out them inside the guide. Delete the square, then weld the parts together and remove any narrow parts. (You can create the cut data using Scan to Cut Data with the scanning image on page 21.) Make a second piece by flipping the first one, and save the data on a USB flash drive.
CanvasWorkspace Built-in Pattern: Square
CanvasWorkspace Built-in Pattern: Rectangle

- 2 Cut the felt to the proper size for the coasters, then use the iron to securely attach an iron-on fabric appliqué contact sheet to the backs of the pieces.

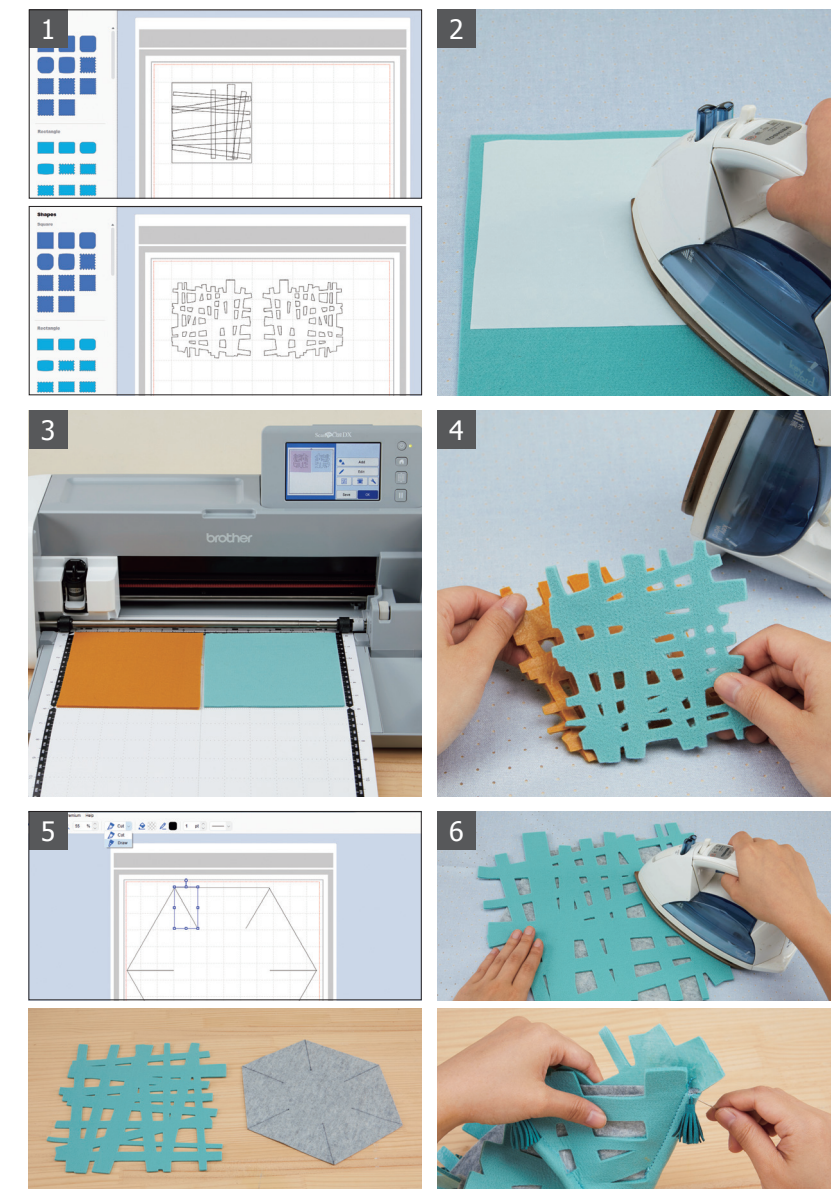
- 3 Peel off the backing paper of the iron-on fabric appliqué contact sheet from the felt, and with the adhesive side facing down, mount the felt piece on a standard tack adhesive mat. Load the data saved on the USB flash drive into the ScanNCut DX, use Background Scan to align the patterns, then cut each color of felt.

- 4 Attach the sides together with the iron-on fabric appliqué contact sheet on the two felt pieces, and iron them together to complete the coaster.

- 5 Next, make the basket. In CanvasWorkspace, select a hexagon measuring 9.88" by 11.42", add drawing lines to indicate where to sew, then save the data on the USB flash drive. On the ScanNCut DX, use the Draw/Cut function to cut the data you created in step 1.

CanvasWorkspace Built-in Pattern: Hexagon (BA-A042)

- 6 Use the iron to fasten the cut parts together. Using the drawing lines as a guide, use the sewing machine to sew the six sides and attach the tassels.



Make your holidays sparkle — add DIY decor to the most wonderful time of the year!

How about a Scandinavian Christmas? It is quiet and calm, yet so look charming! The light room colors combined with a touch of bright colorful accents look very elegant and modern.



Material

3-mm foam, 2-mm foam, glitter or nail polish, washi tape

Note: Check the size of the cup used before cutting.

Tip Decorate the ornament parts using glitter or nail polish for a more-festive look.

1 Using Scan to Cut Data, scan the tree on page 21.
Affix the 3-mm foam sheet to the mat, and use washi tape to tape it down so that it will not easily come loose.
Tree size: 11.18" by 7.28"

2 Cut the tree.
Scan and cut the other tree piece in the same way.

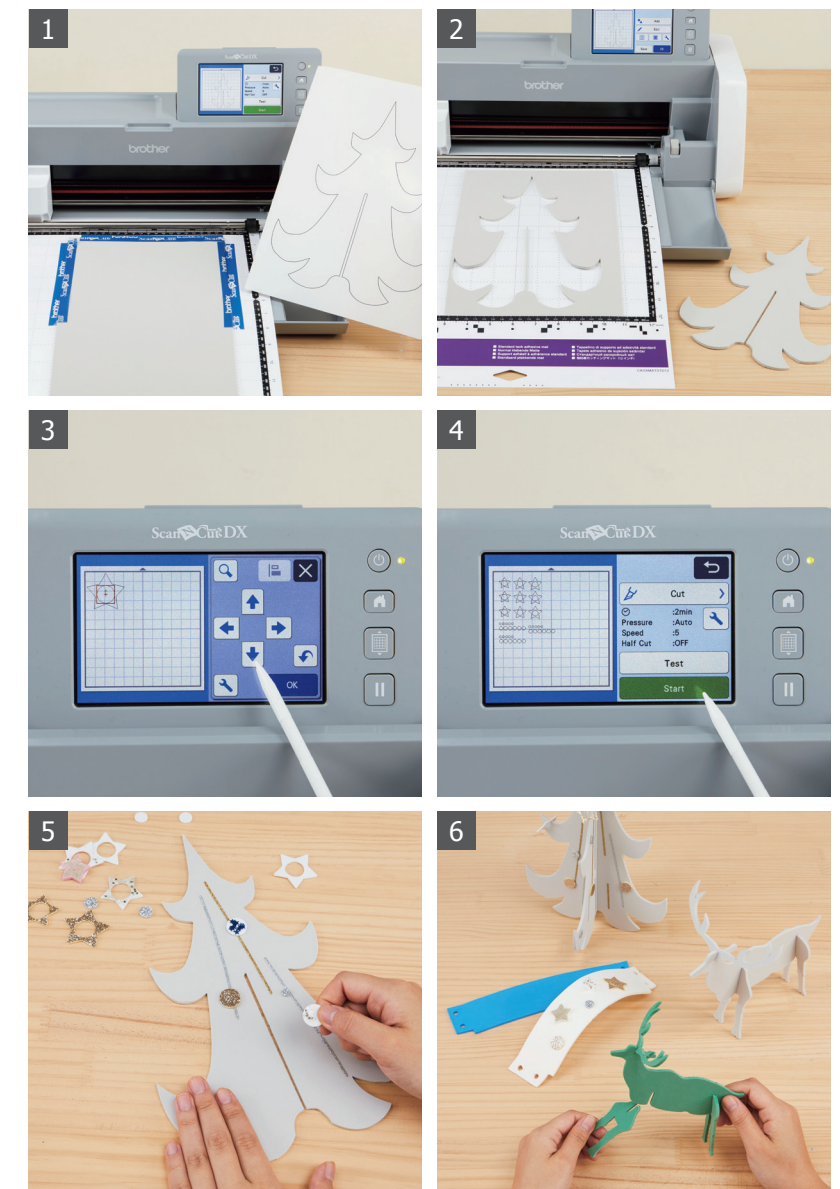
3 Load and edit the built-in patterns for the star and the circle.
Built-in Patterns: BA-A074, BA-A035

4 Edit the other ornament parts and cut them using the 2-mm foam sheet.

5 Before assembling the pieces, attach the colored parts and stickers to the tree.

6 In the same way, scan and cut the reindeer and cup holder, then assemble them.

* Edit the cup holder to match the size of the cup you want to use it for.



Make a blank wall your canvas.

Is creating wall décor time consuming? Not anymore. All you have to do is enjoy designing your own wall sticker and adhere it on a wall. Be bold, because it is removable!*

*Test a small piece of adhesive vinyl on the surface before beginning the project. Refer to the manufacturer's packaging for further instructions and to confirm whether it is removable.



Material

Adhesive craft vinyl, transfer paper

- Accessories sold separately

Roll Feeder
Scraper, hook



Tip When cutting using the 12" mat, make combinations of different colored pieces of vinyl for a unique look.

Preparations

Purchase the Roll Feeder and enter the activation code on the activation card.



- 1 First, load the built-in pattern which you would like to cut and save it on your USB flash drive, and import the pattern into CanvasWorkspace (<http://CanvasWorkspace.Brother.com>) from your USB flash drive.
Call up the scanned data (book on page 22) in CanvasWorkspace, add the data saved on the USB flash drive, then edit the data.
Built-in Patterns: BO-A101, BO-A104, LO-AL02, BO-A103
Text: FO-A003, FO-A004
Heart Pattern BA-A067, Diamond Pattern BA-A072
Dimensions: 11.54" by 9.65"
- 2 In CanvasWorkspace, press "Export" to save the data to the USB flash drive.
- 3 Install the Roll Feeder on the ScanNCut DX, then mount the adhesive craft vinyl on the Roll Feeder.
- 4 Select "Roll Feeder," then load the data saved on the USB flash drive and carry out cutting.
- 5 Weld the negative pieces of vinyl. Then place the transfer paper over top the design. Use a scraper to secure the transfer paper to the vinyl design.
- 6 Then peel it from the backing (release) paper. Apply to the wall using a scraper.



Special frames for special moments. Genuine leather photo frames give every home warmth and comfort.

Can't find right photo frames for your precious memories? Then make one that truly makes you happy for a lifetime.



Material

Genuine leather, glue, sewing-machine thread, sewing machine, decorative materials, file



Tip Using a leather edge-finishing agent to polish the cut edges of the leather pieces can make the finished frame more attractive.

1 First, load the built-in pattern which you would like to cut and save it on your USB flash drive, and import the pattern into CanvasWorkspace (<http://CanvasWorkspace.Brother.com>) from the USB flash drive. Load and edit the data saved on the USB flash drive.

For the front piece, combine the AR-P102 pattern (2 pieces) and a rectangle (3.58" by 1.18"). At "Align Object," select "Middle" and arrange the items, then ungroup AR-P102 and weld the two frames and the rectangle.

Built-in Pattern: AR-P102
CanvasWorkspace Built-in Pattern: Rectangle
Note: The actual size of the rectangle is 1.02" (with overlap of 0.08" on either side for welding).

2 For the back piece, (AR-P102), edit it to leave only the border, and copy to make two pieces. Also make a rectangle (3.58" by 1.34").

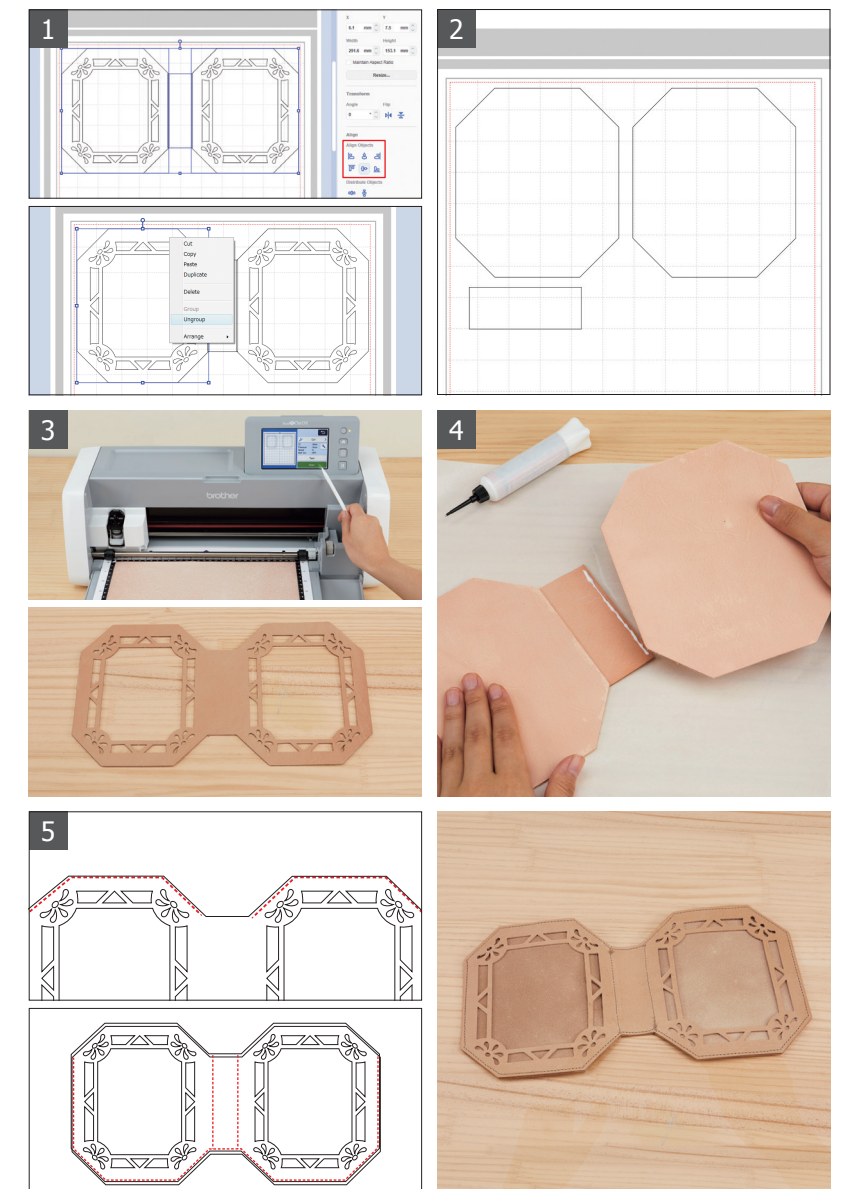
Built-in Pattern: AR-P102
CanvasWorkspace Built-in Pattern: Rectangle
Note: The actual size of the rectangle is 1.02" (with overlap of 0.08" on either side for attaching).

3 Mount the leather on the mat and cut it.

4 Glue together the three back pieces, then allow them to dry completely.

Finished size: 6.06" by 11.50"

5 First sew the openings on the front and back pieces, then put the two pieces together and sew the locations other than the openings.



Here are new party ideas to surprise your guests! Try a “masquerade party” with your handmade masks.

If you plan a little party for close friends, make a variety of masks and hold a masquerade party. You never have to purchase expensive Venetian masks.



Material

Thermoplastic (heat-form plastic) sheet, spray paint, lamé, beads or the like, decorative tape, mask or mannequin head, aluminum foil, cooking paper, glue, iron, hair dryer, curling iron, etc.

Note: Refer to manufacturer's instructions for thermoplastic sheet.

Tip Taking care not to burn yourself, you can create a three-dimensional effect for the flower pieces by holding the flower with your left hand and using your right hand to bend the petals to form them.

1 Using Scan to Cut Data, scan the eye area on page 21. Also cut the AR-J012 and AR-A019 pieces. Built-in Patterns: AR-J007, AR-J012, AR-A019

2 Use the aluminum foil to cover the area of the mask or mannequin head that you want to use as the face mold. Place the plastic sheet that will become the mask between two pieces of cooking paper, then heat it using the iron.

3 Use caution when using this material, as it may be hot. Place the softened plastic sheet on the face mold and mold it to form well-defined facial features. Allow the plastic sheet to cool and harden, then remove it from the face mold.

4 Use the hair dryer (or other heating implement) to warm the AR-J012 piece, then bend it to the shape of the mask's rim. Warm the AR-A019 pieces and shape them by hand.

5 Use the spray paint to color the pieces. When they have dried, use the adhesive to attach lamé and other decorative items.



Nothing is more elegant than delicate lace patterns.

If you want to add a subtle and feminine touch to your project, try these Tattered Lace patterns. Looks too complicated? Not at all!



©Craft Channel Productions LTD.



©Craft Channel Productions LTD.

Tip Weld multiple Tattered Lace patterns together for a unique, fancy design.

Material

Paper, vellum paper, adhesive, feathers, beads

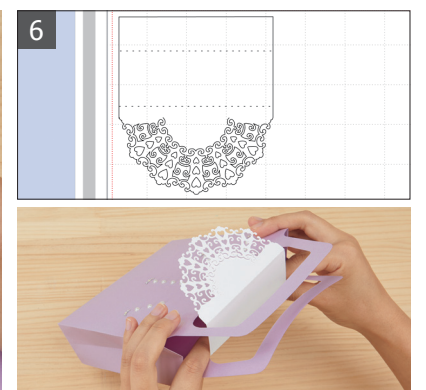
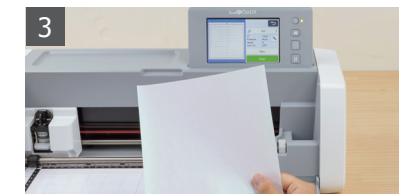
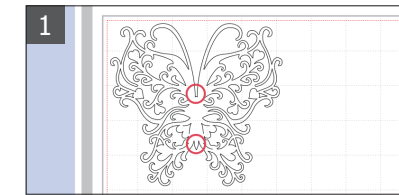
- Accessories sold separately
- Tattered Lace Pattern Collection 2
- Tattered Lace Pattern Collection 5
- Tattered Lace Pattern Collection 7

Preparations

Purchase the Tattered Lace Pattern Collection 5" (No. P05014). Remove the lines for the body of the butterfly (shown by the red circles). Call up the scanned data (box on page 24) in CanvasWorkspace. Arrange the edited butterfly and other parts with the box and save the data.



- 1 In CanvasWorkspace, edit "Tattered Lace Pattern Collection 5" (No. P05014). Remove the lines for the body of the butterfly (shown by the red circles). Call up the scanned data (box on page 24) in CanvasWorkspace. Arrange the edited butterfly and other parts with the box and save the data.
- 2 Cut the box you have laid out with the butterfly and other parts.
- 3 Cut the vellum paper into a square (8.78" x 5.98"). Attach the cut vellum to the back of the box.
- 4 Assemble the box, and bend the butterfly wings at their base to angle them slightly upward. Using adhesive, decorate by attaching the other parts cut from the other paper.
- 5 Cut "Tattered Lace Pattern Collection 7" (No. P07009), and attach it to the surface of the cut box using adhesive.
- 6 In CanvasWorkspace, edit "Tattered Lace Pattern Collection 2" (No. P02004). Overlay a rectangle (2.83" x 3.94") by about 0.08" and weld, then add two broken lines (leaving a 0.79" margin for attachment and a 1.97" portion corresponding to the thickness of the box), then cut. Attach this using adhesive so as to cover the box.



Add a magical touch to the celebration that kids will love!

This colorful paper garland is the perfect décor for a kid's party. Choose his or her favorite colors of paper and enjoy making them!

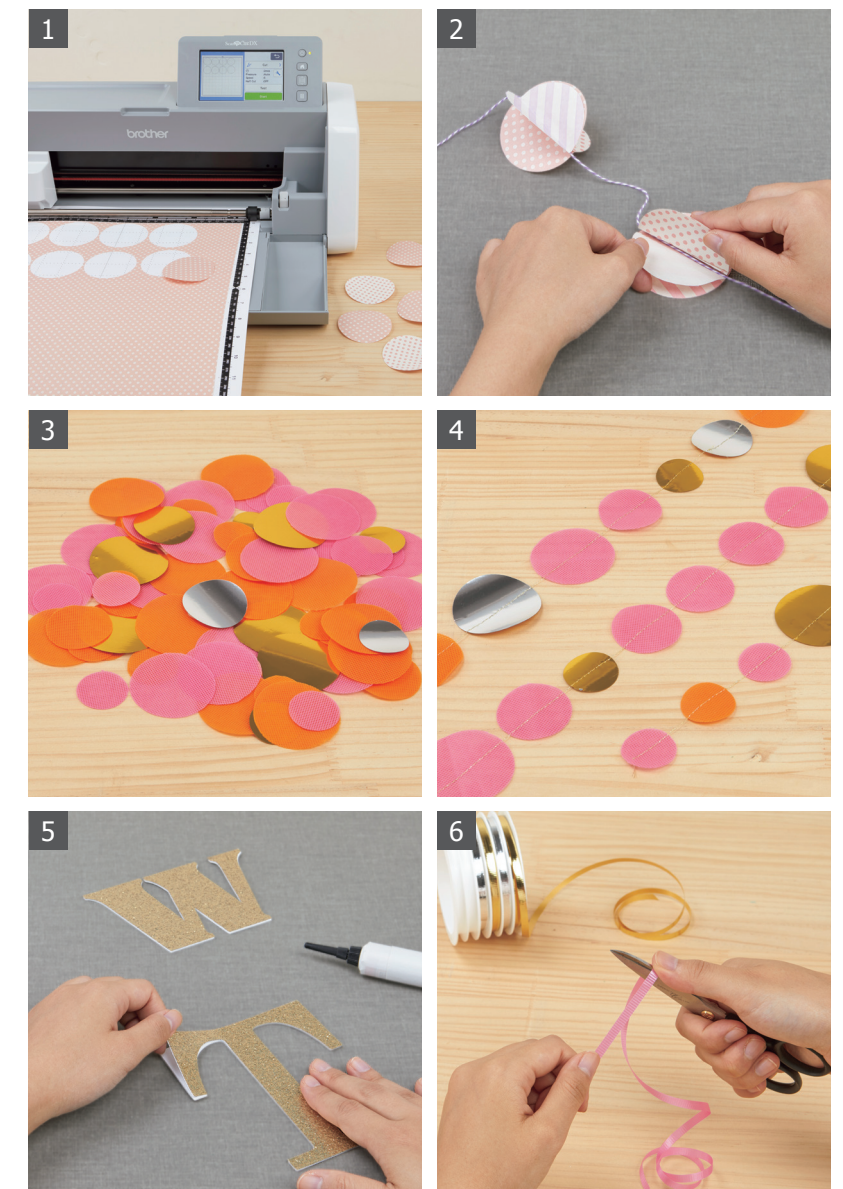


Material

Nonwoven fabric, paper, lamé sheet, adhesive, tape, fishing line, string, sewing thread, sewing machine, ribbon

Tip For greater festive appeal, use a variety of different fonts for cutting the letters.

- 1 Cut the needed number of circular pieces (2.36") for the four-piece round parts.
- 2 Fold the circular pieces in half and attach the halves to one another using adhesive, sandwiching the string in the center of the attached pieces.
- 3 Cut the nonwoven fabric into circular pieces measuring 1.97", 1.57", and 1.18" in diameter.
- 4 Using straight stitching, sew on pieces in various combinations of colors and sizes.
- 5 Cut the built-in pattern letters using the lamé sheet, and also cut the cardboard. Apply adhesive to each piece and attach the pieces. Tape the fishing line to the backs.
- 6 Curl ribbon and attach it to decorate the garland.



A sweet felt flower wreath to add cheer to your home!

These DIY felt flowers are an easy way to add color to any home.



Material

3-mm felt, 2-mm felt, 10" wreath, glue gun, sewing thread, sewing machine, iron, iron-on fabric appliqué sheets

- Accessories sold separately
- Iron-on fabric appliqué contact sheet



Tip Attaching corresponding parts back to back using adhesive can give the wreath more of a three-dimensional feel.

- 1 Select the built-in patterns for the flowers and leaves. Pick three or so different sizes for each, and cut five of each part. (Note that some of the circular shapes might not be used.)

Built-in Patterns: AR-A102 (1.97" x 1.97"), AR-A013 (3.94" x 2.76"), AR-A015 (1.97" x 1.97"), AR-A017 (1.30" x 1.34"), AR-A019 (2.68" x 2.64"), AR-A020 (3.15" x 3.11"), AR-A024 (2.76" x 1.54", 1.97" x 1.10"), AR-A027 (2.56" x 1.38"), AR-A034 (3.15" x 1.50", 2.36" x 1.10"), AR-A102 (1.97" x 1.97")

- 2 Use the iron to attach the iron-on fabric appliqué contact sheet to the felt pieces.

- 3 Cut the felt.

- 4 Embellish some of the cut felt pieces by stitching the pieces using the sewing machine to form petal pieces into appealing shapes and create veins in leaf pieces.

- 5 Starting with the larger flower pieces, attach the flower pieces to the wreath using the glue gun, giving thought to creating a balanced arrangement.

- 6 When attaching the pieces, instead of positioning the flowers so that they all face in the same direction, arrange the petals and leaves to simulate movement.



Capture the beauty of the light by creating these suncatchers.

Beautiful stained-glass mobiles are now easy to make. These are made with color film sheets and paper — simple and easy.



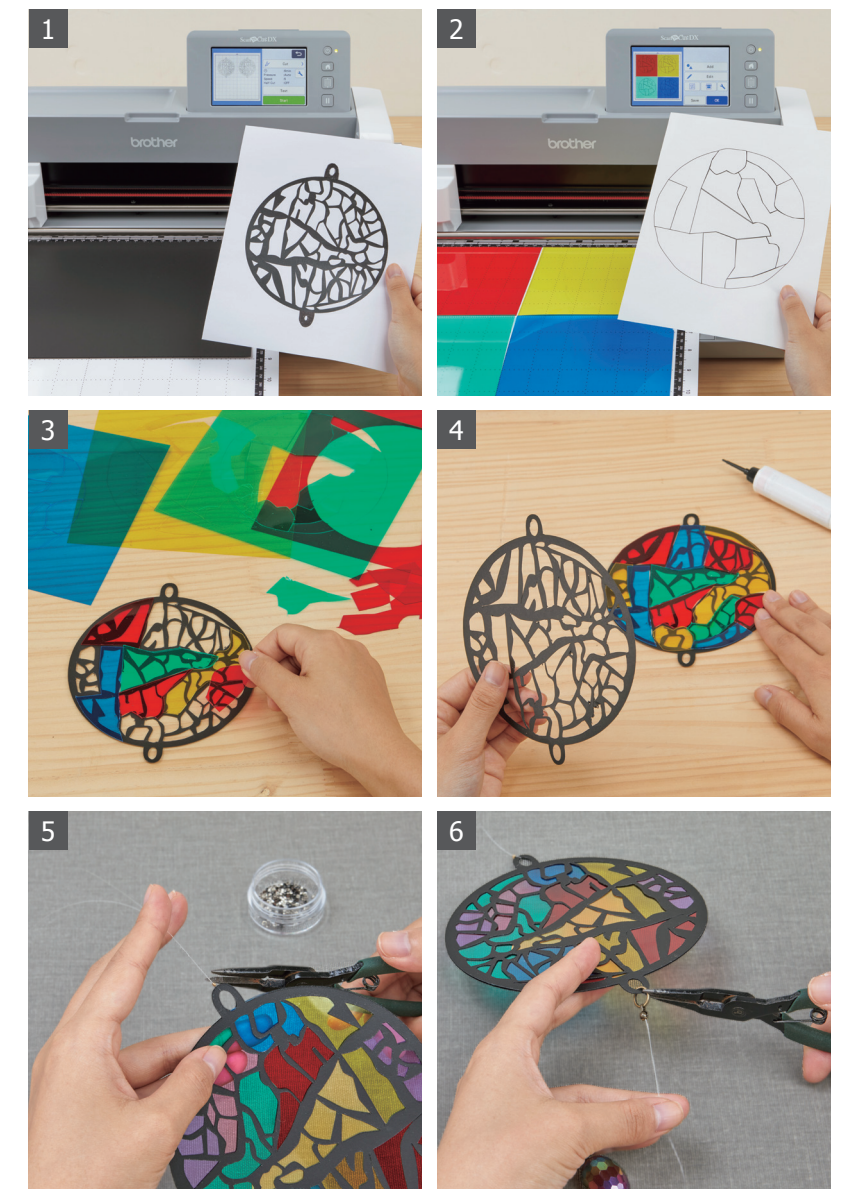
Material

Black paper (construction paper), colored film/ plastic sheets (6 colors), adhesive, fishing line, decorative charm items, crimp beads, clamp-on beads, metal craft rings, needle-nose pliers



Tip You can also create a lovely mobile by using the built-in patterns. Edit a half-circle loop for hanging onto the top of built-in pattern AR-P105.

- 1 Using Scan to Cut Data, scan the copy scanning image A on page 23. Copy the data and make a mirror image of one copy. Cut the pieces to make the black base parts. Scan, copy, and cut scanning image B in the same way.
- 2 Using Scan to Cut Data, scan the scanning image A' on page 23. Cut the necessary number of colors from the film sheets. Scan and cut scanning image B' in the same way.
- 3 Apply adhesive to the back of one black base part. Arrange the cut colored film pieces on the base part, placing them so that the film pieces do not protrude beyond the edges of the base part.
- 4 Apply adhesive to the back of the black base part, then carefully overlay it on the first base part, sandwiching the colored film pieces between the base parts.
- 5 Pass fishing line through the assembled base parts, then use the needle-nose pliers to crimp the beads to hold the parts in place.
- 6 Thread the decorative charm items onto the fishing line, then thread on crimp beads, clamp-on beads, and metal craft rings and attach below the stained-glass pieces.



The perfect tool to create model buildings.

Precision cutting board is key to a quality model! Cut and build miniatures and prototypes — good for professional architects.



Material

2-mm styrene board, clock hands, clock movement, adhesive



Tip You can also easily make miniature chairs using a 1-mm styrene board (scanning image on page 24).

- 1 Edit the patterns in CanvasWorkspace. First, load the built-in pattern that you would like to cut and save it on your USB flash drive, and import the pattern into CanvasWorkspace (<http://CanvasWorkspace.Brother.com>) from your USB flash drive. For the house, edit the built-in pattern (AR-E102). Add the rectangle and weld it (8.31" x 11.26"). To create the clock panel, edit the square and the triangle (10.63" x 9.21"). Lay out a circle at the center for drilling the hole to pass the clock movement through. (Size the hole to fit the clock parts you're using.)
Built-in Patterns: AR-E102 (divided)

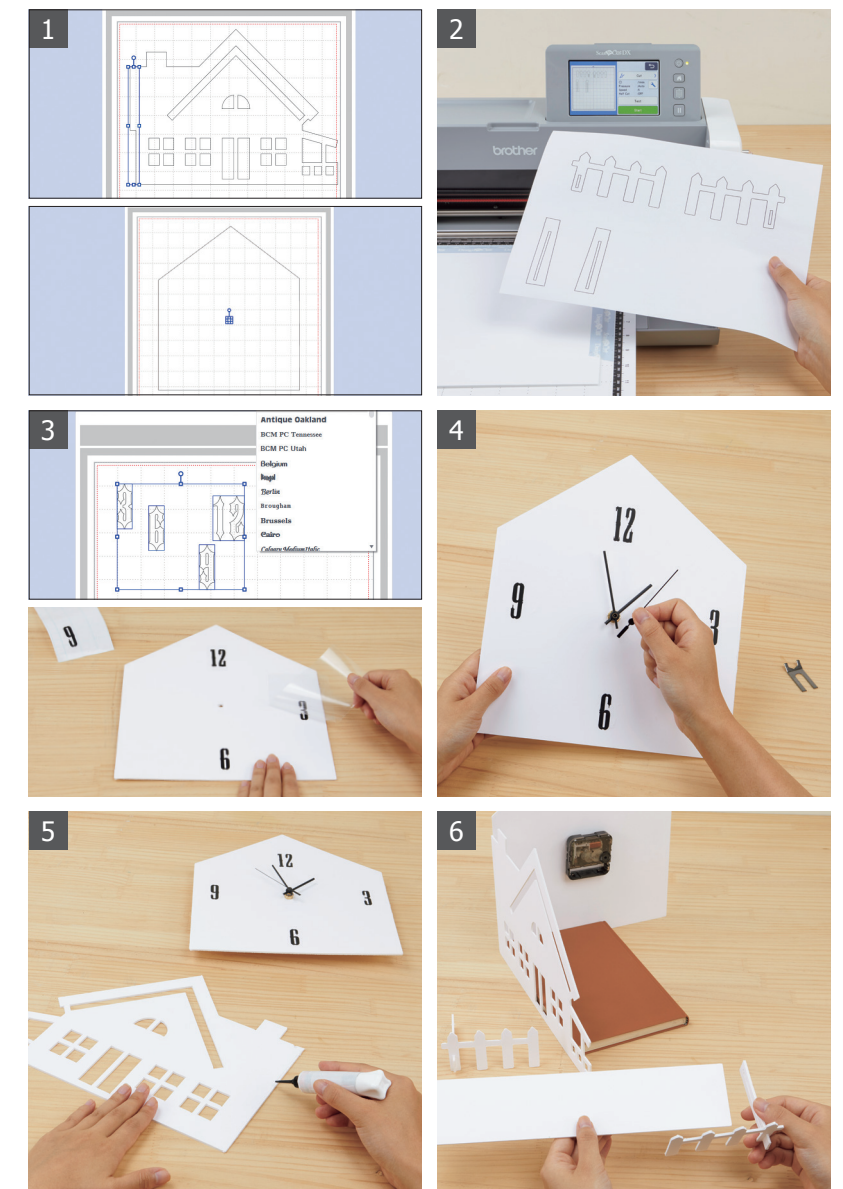
- 2 Using Scan to Cut Data, scan the deck and fence on page 24. Cut the styrene board to make the pieces from step 1, the deck, and the fence pieces (use washi tape to tape it down so that it will not easily come loose.).

- 3 Select your preferred font for the numerals to affix to the clock panel, then half-cut the cutting sheet to make them peelable. Affix the numerals cut from the transfer sheet to the clock panel, working out any air bubbles. Peel off the backing paper from the adhesive sheet, then arrange it on the clock panel and affix it.

- 4 Assemble the clock's hands and movement onto the clock panel.
(Assemble the clock according to the manufacturer's instructions.)

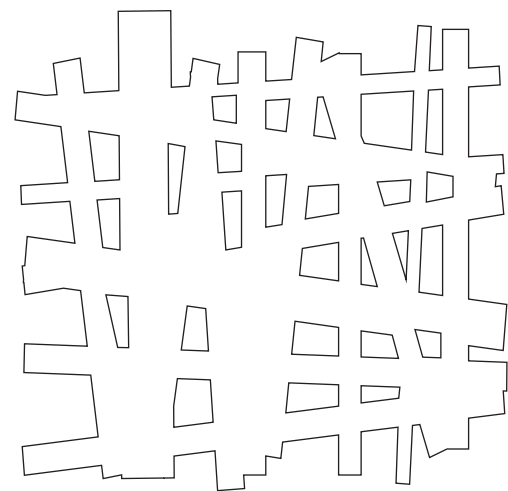
- 5 Attach the house pieces and clock panel using adhesive. Use books or the like to brace the pieces and keep them straight while the adhesive dries.

- 6 Assemble the wooden deck.

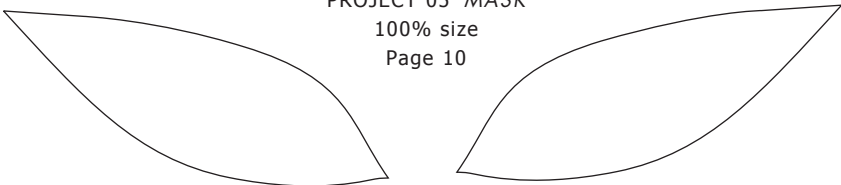


ORNAMENTS

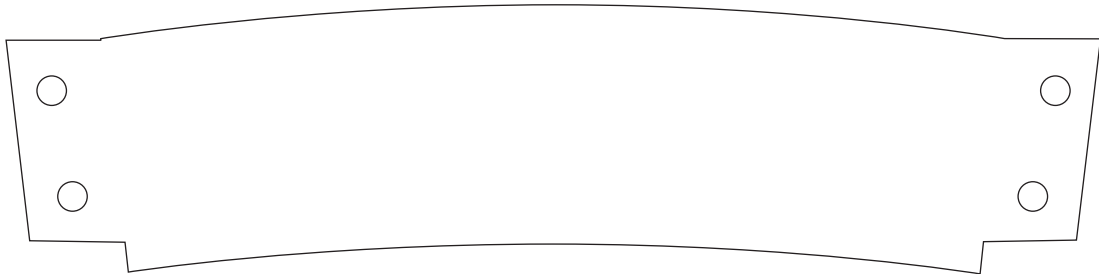
Custom Designs for All Your Creative Needs.



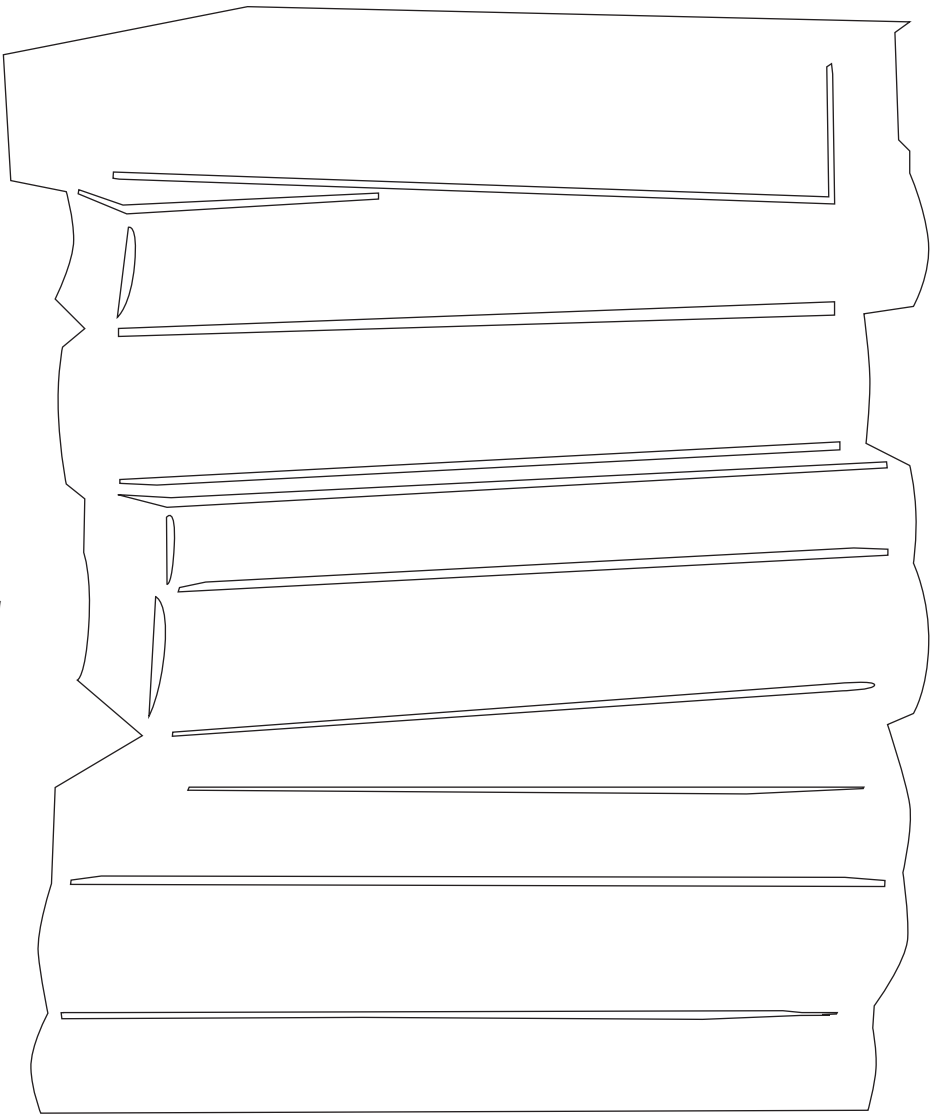
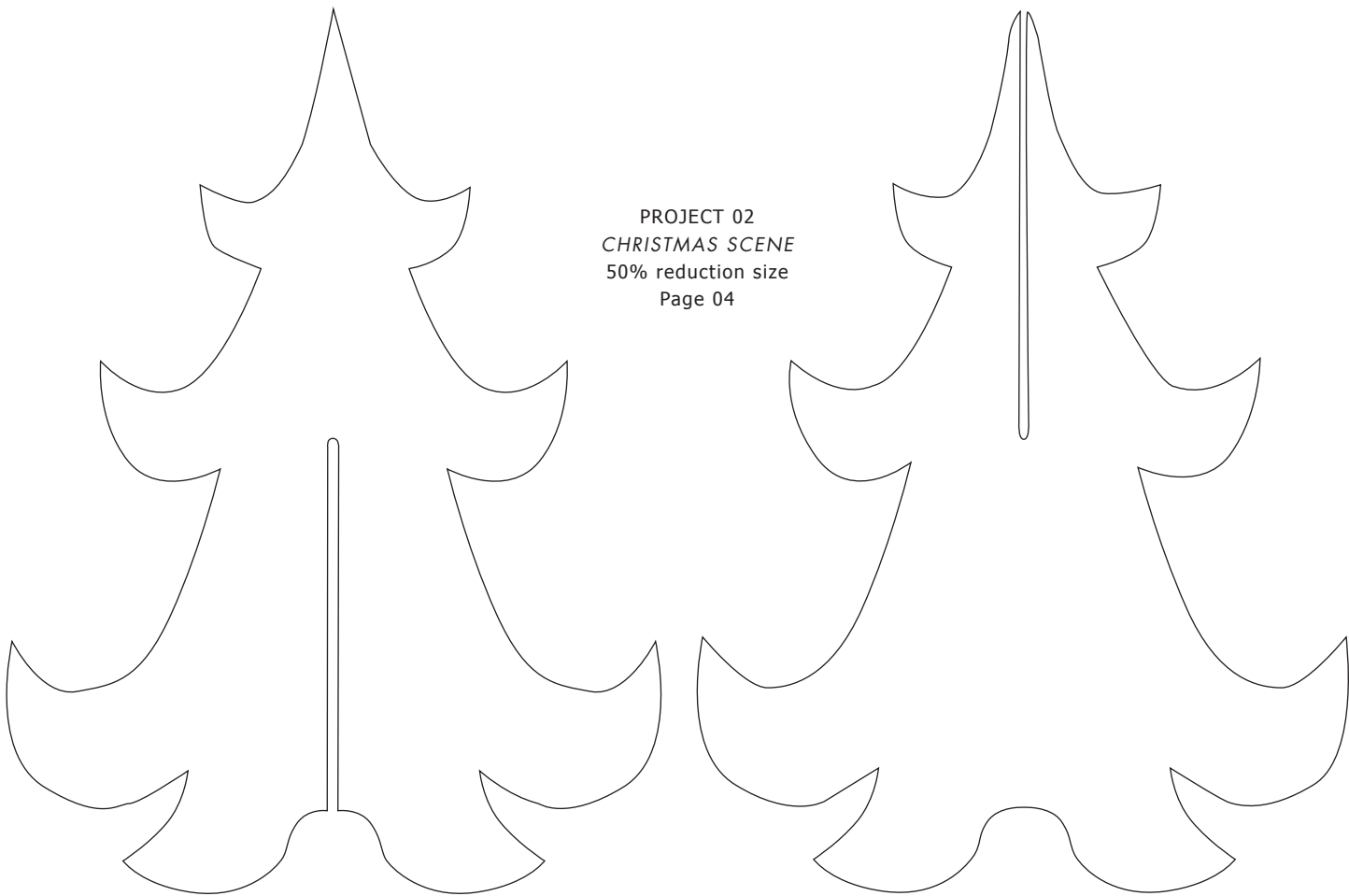
PROJECT 01 WOVEN BASKET
65% reduction size
Page 02



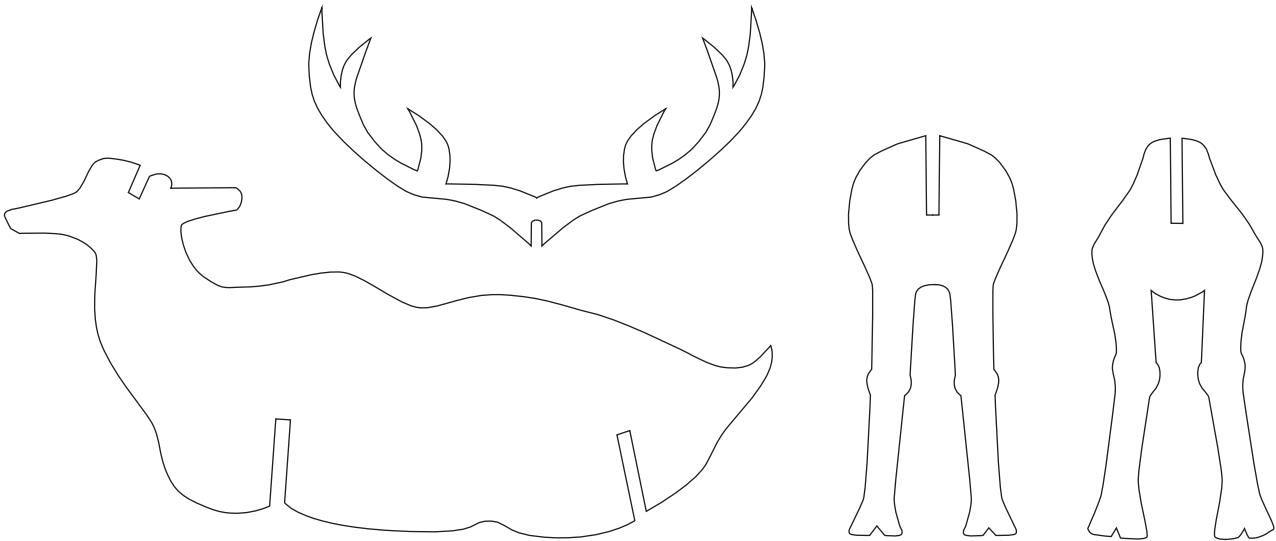
PROJECT 05 MASK
100% size
Page 10



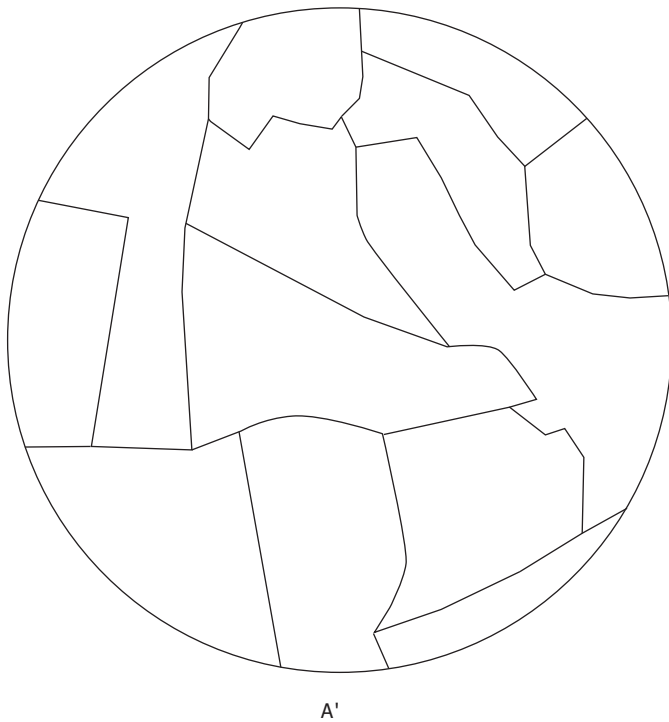
PROJECT 02
CHRISTMAS SCENE
50% reduction size
Page 04



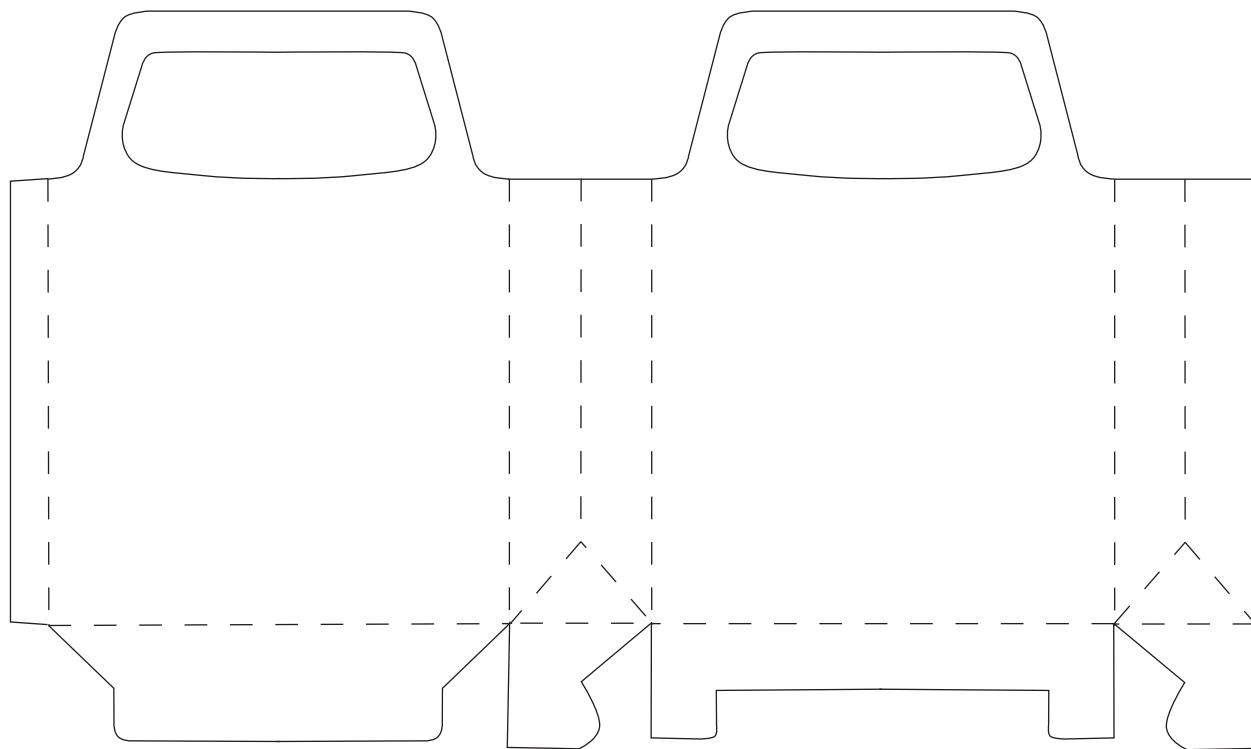
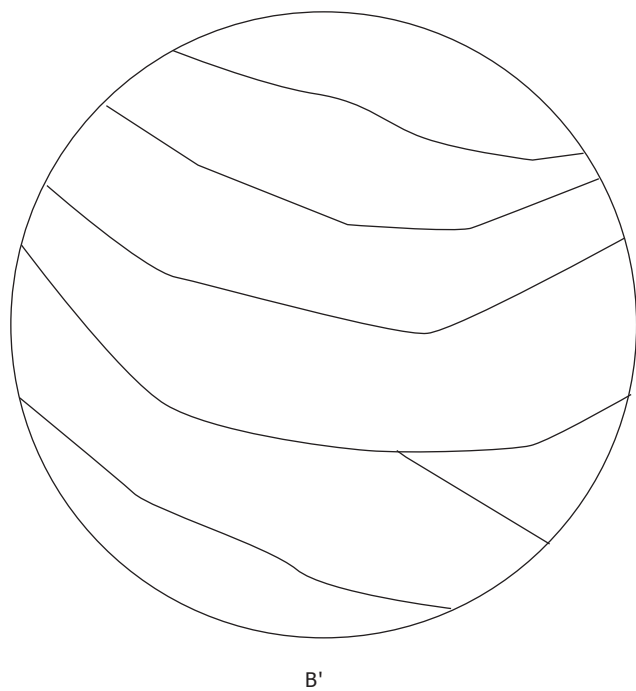
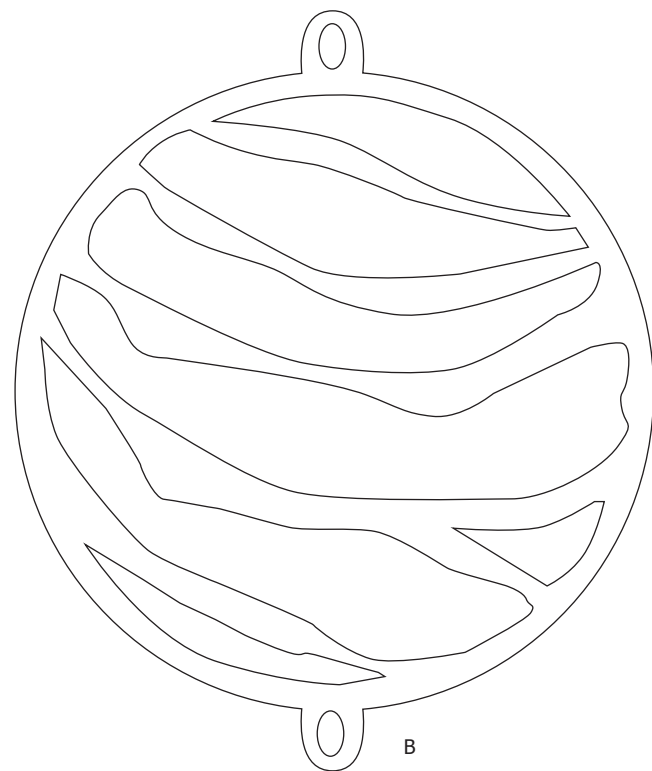
PROJECT 03 WALL DECORATION
50% reduction size
Page 06



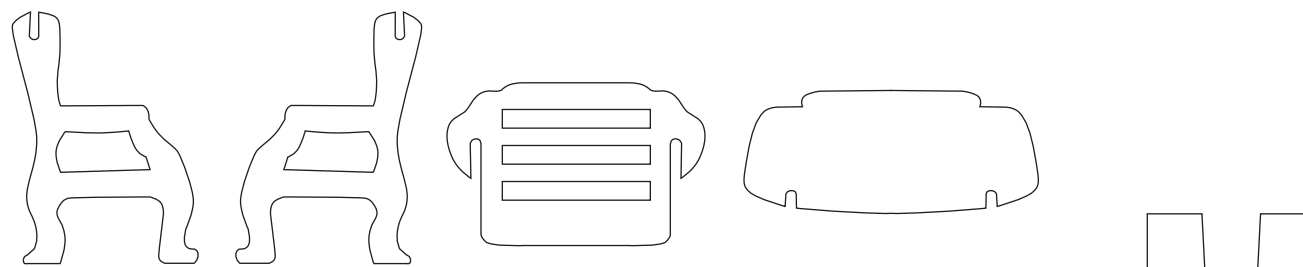
ORNAMENTS



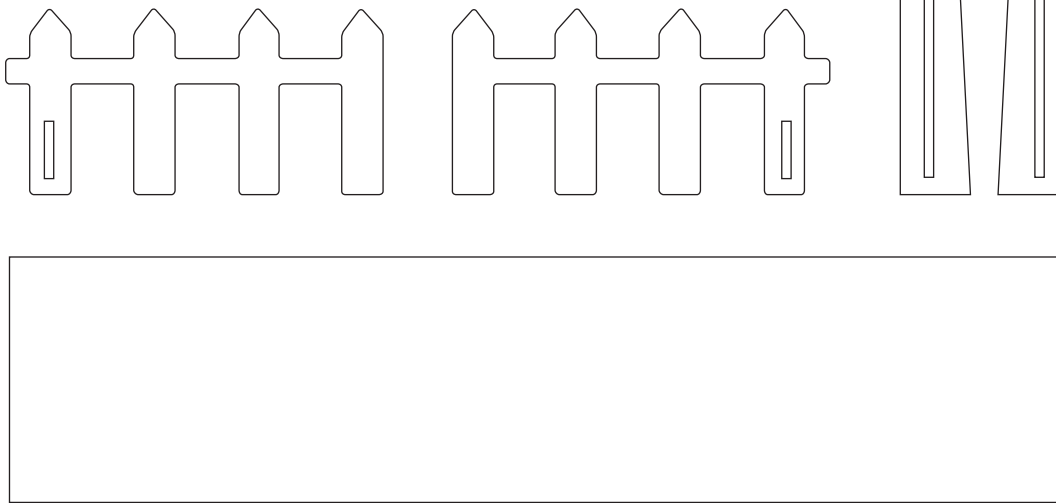
PROJECT 09
STAINED GLASS MOBILE
65% reduction size
Page 18



PROJECT 06
TATTERED LACE BOX
35% reduction size
Page 12



PROJECT 10
HOUSE CLOCK MODEL
50% reduction size
Page 20



Why try CanvasWorkspace?

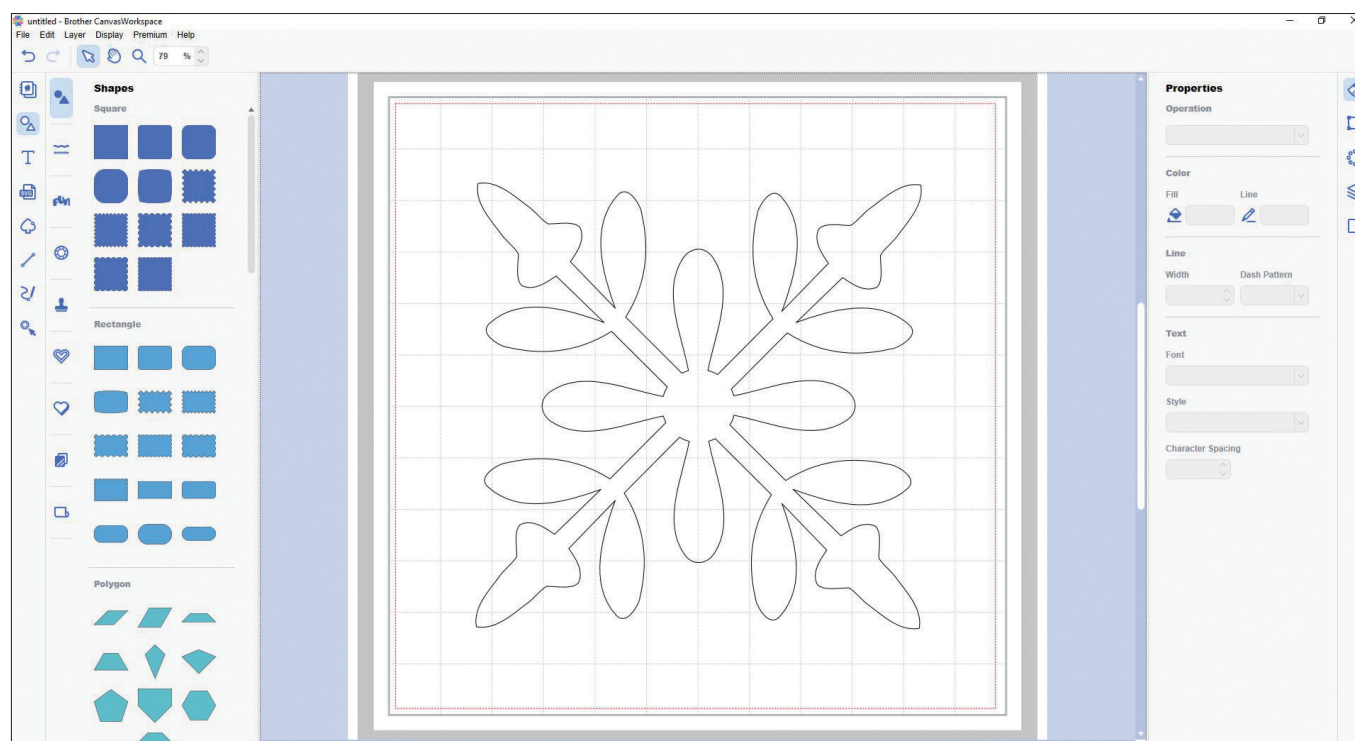
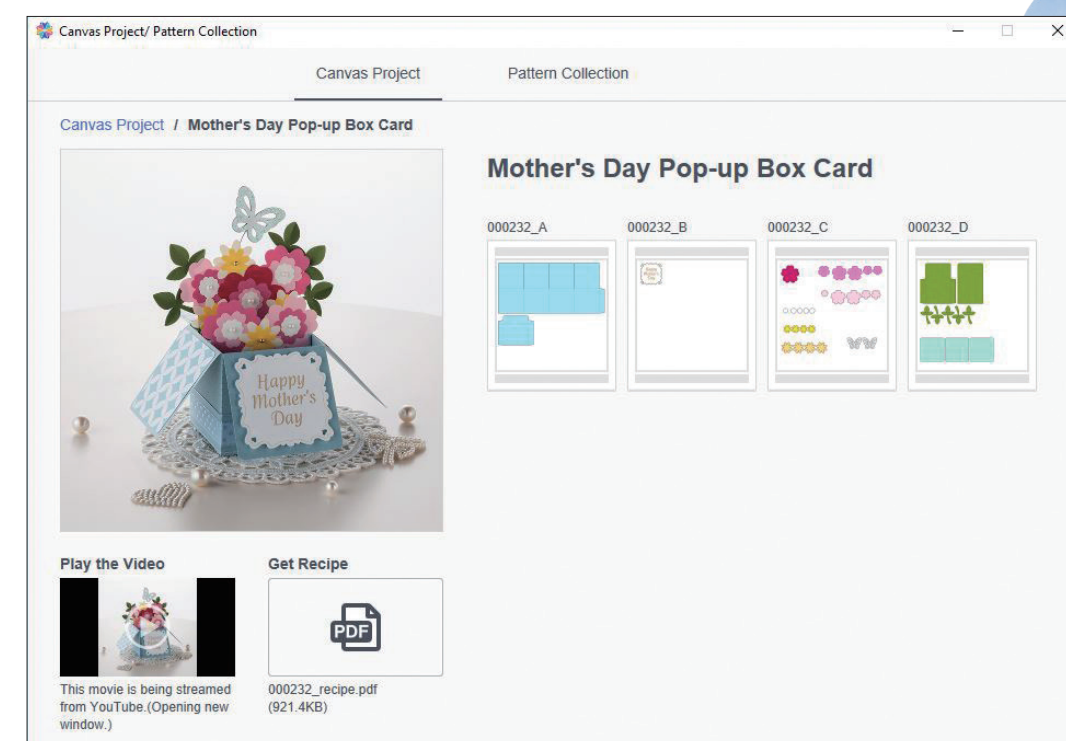
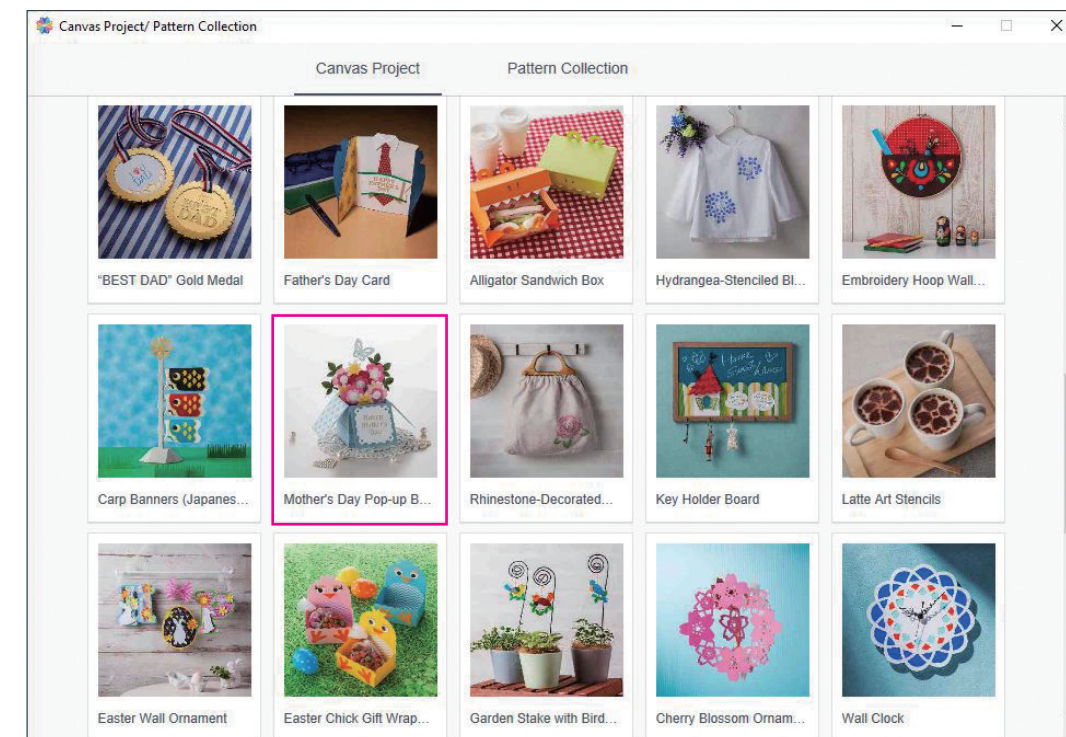
Download the new version from <http://CanvasWorkspace.Brother.com>



"CanvasWorkspace for PC" is a PC-based application that combines the versatility of your favorite design software and the power of your Brother cutting machines. See what you can do with it!

- Create unique cut files by using built-in patterns and premium patterns offline like rhinestone, stamp, line or region embossing, and foiling.
- Use fonts already installed on your computer.
- Import .svg and convert to .fcm format.
- Enjoy premium functions such as rhinestone, sticker, and Roll Feeder.
- Trace image files (.jpg, .gif, .png, .bmp) to create cut data by three image tracing methods.
- Send data to the machine and import data from the machine via the Internet.

- Free project — access to hundreds of projects that include recipes, videos and cut files (Internet connection is necessary).



As of August, 2018

ScanCut DX

Innov-is Edition

What's the formula for perfect crafting success? The ScanNCut DX featuring auto-blade technology, has essentially everything else you need! Just add imagination!

ScanNCut DX Features:

Blade Sensor Technology

- No need to adjust based on material type
- Auto Blade detects the thickness of material

Cuts up to 0.1" (3 mm) thickness

- Cut materials such as foam and felt virtually effortlessly with Auto Blade†

Stand-Alone

- 5" LCD touchscreen display for easy editing of cut data
- No PC required

Advanced editing with CanvasWorkspace

- Create, edit, convert, and send cut data to and from the machine

Wireless Network Ready

Up to 600 DPI for the Scan to USB function

ScanNCut DX SDX225 Innov-is Edition:

- PES File Import Capability****
- PES File Embroidery Stitch Line Detection****

**Reads most PES/PHC/PHX* embroidery files. †To read PHX file, software version should be 1.1x or higher. ‡Material compatibility may vary. Always perform a trial/test cut to confirm a successful cut. Images are for illustrative purposes only. Specifications subject to change. ©2018 Brother International Corporation.

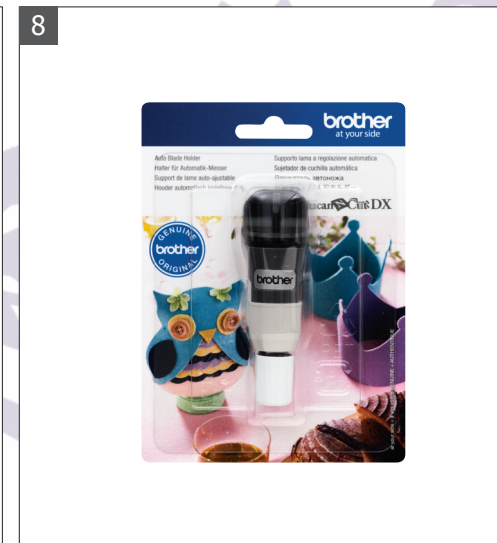
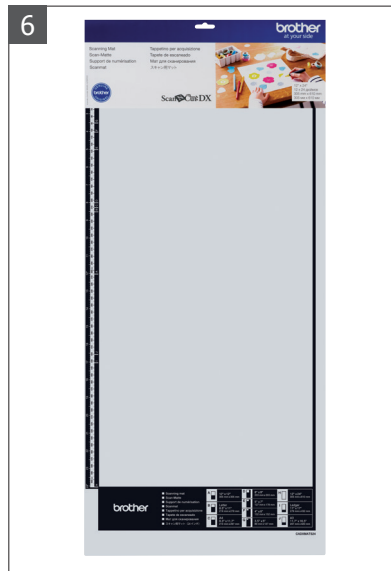
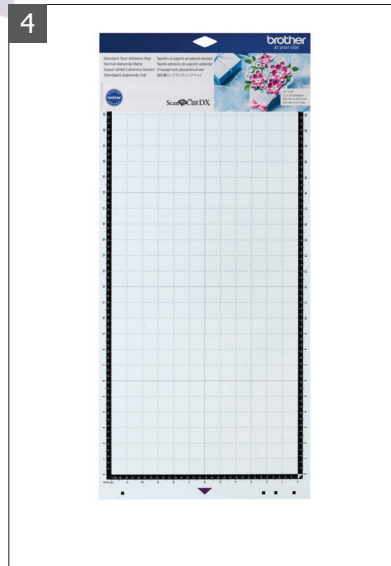
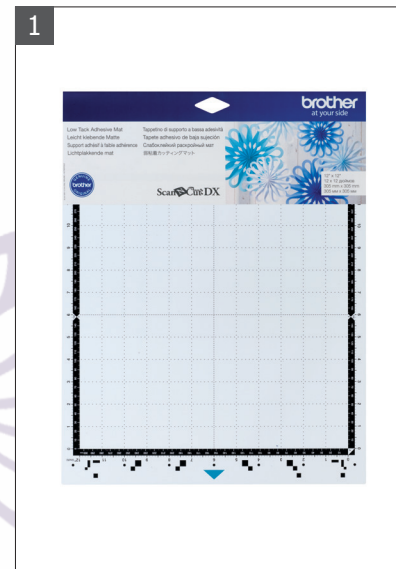
27

28

OPTIONAL ACCESSORIES

ScanCut DX

- 1 Low Tack Adhesive Mat
12" x 12" CADXMATLOW12
- 2 Low Tack Adhesive Mat
12" x 24" CADXMATLOW24
- 3 Standard Tack Adhesive Mat
12" x 12" CADXMATSTD12
- 4 Standard Tack Adhesive Mat
12" x 24" CADXMATSTD24
- 5 Scanning Mat
12" x 12" CADXMATS12
- 6 Scanning Mat
12" x 24" CADXMATS24
- 7 Auto Blade
CADXBLD1
- 8 Auto Blade Holder
CADXHLD1
- 9 Thin Fabric Auto Blade
CADXBLDQ1
- 10 Thin Fabric Auto Blade Holder
CADXHLDQ1
- 11 Roll Feeder
CADXRF1
- 12 Design Collection 1 for Roll Feeder
CADXRFP01
- 13 Home Deco Pattern Collection for Roll Feeder
CADXRFP02



OPTIONAL ACCESSORIES

ScanCut SERIES



*More colors available.



- 14 6FT Adhesive Vinyl Rolls
CAVINYLPNKLT
CAVINYLBELT
CAVINYLGR
CAVINYLGRLM
CAVINYLORG
CAVINYLPNKHT
- 15 Rhinestone Starter Kit
CARSKIT1
- 16 Embossing Starter Kit
CAESKIT1
- 17 Foil Transfer Starter Kit
CAFTKIT1
- 18 Printable Sticker Starter Kit
CAPSKIT1
- 19 4-inch Brayer
CABRY1
- 20 Scraper
CASC1
- 21 Spatula and Hook Set
CASPDK1
- 22 Precision Tweezers
CATWZ1

OPTIONAL ACCESSORIES

ScanCut SERIES

23

brother
at your side

Tattered Lace
Designed by Stephanie Weiglman

Tattered Lace Pattern Collection 1
Mustersammlung Tattered Lace 1
Collection 1 de motifs dentelle Tattered Lace
Patronencollectie Tattered Lace 1
Collezione disegni Tattered Lace 1
Colección de patrones Tattered Lace 1
Konzepte und Ideen "Tattered Lace 1"
タタードレース パターンコレクション 1

ScanCut | DesignCut

20

Activation Card

24

brother
at your side

Tattered Lace
Designed by Stephanie Weiglman

Tattered Lace Pattern Collection 2
Mustersammlung Tattered Lace 2
Collection 2 de motifs dentelle Tattered Lace
Patronencollectie Tattered Lace 2
Collezione disegni Tattered Lace 2
Colección de patrones Tattered Lace 2
Konzepte und Ideen "Tattered Lace 2"
タタードレース パターンコレクション 2

ScanCut | DesignCut

20

Activation Card

25

brother
at your side

Tattered Lace
Designed by Stephanie Weiglman

Tattered Lace Pattern Collection 3
Mustersammlung Tattered Lace 3
Collection 3 de motifs dentelle Tattered Lace
Patronencollectie Tattered Lace 3
Collezione disegni Tattered Lace 3
Colección de patrones Tattered Lace 3
Konzepte und Ideen "Tattered Lace 3"
タタードレース パターンコレクション 3

ScanCut | DesignCut

20

Activation Card

26

brother
at your side

Tattered Lace
Designed by Stephanie Weiglman

Tattered Lace Pattern Collection 4
Mustersammlung Tattered Lace 4
Collection 4 de motifs dentelle Tattered Lace
Patronencollectie Tattered Lace 4
Collezione disegni Tattered Lace 4
Colección de patrones Tattered Lace 4
Konzepte und Ideen "Tattered Lace 4"
タタードレース パターンコレクション 4

ScanCut | DesignCut

21

Activation Card

27

brother
at your side

Tattered Lace
Designed by Stephanie Weiglman

Tattered Lace Pattern Collection 5
Mustersammlung Tattered Lace 5
Collection 5 de motifs dentelle Tattered Lace
Patronencollectie Tattered Lace 5
Collezione disegni Tattered Lace 5
Colección de patrones Tattered Lace 5
Konzepte und Ideen "Tattered Lace 5"
タタードレース パターンコレクション 5

ScanCut | DesignCut

20

Activation Card

28

brother
at your side

Tattered Lace
Designed by Stephanie Weiglman

Tattered Lace Pattern Collection 6
Mustersammlung Tattered Lace 6
Collection 6 de motifs dentelle Tattered Lace
Patronencollectie Tattered Lace 6
Collezione disegni Tattered Lace 6
Colección de patrones Tattered Lace 6
Konzepte und Ideen "Tattered Lace 6"
タタードレース パターンコレクション 6

ScanCut | DesignCut

20

Activation Card

29

brother
at your side

Tattered Lace
Designed by Stephanie Weiglman

Tattered Lace Pattern Collection 7
Mustersammlung Tattered Lace 7
Collection 7 de motifs dentelle Tattered Lace
Patronencollectie Tattered Lace 7
Collezione disegni Tattered Lace 7
Colección de patrones Tattered Lace 7
Konzepte und Ideen "Tattered Lace 7"
タタードレース パターンコレクション 7

ScanCut | DesignCut

20

Activation Card

23

Tattered Lace Pattern Collection 1
CATTLP01

24

Tattered Lace Pattern Collection 2
CATTLP02

25

Tattered Lace Pattern Collection 3
CATTLP03

26

Tattered Lace Pattern Collection 4
CATTLP04

27

Tattered Lace Pattern Collection 5
CATTLP05

28

Tattered Lace Pattern Collection 6
CATTLP06

29

Tattered Lace Pattern Collection 7
CATTLP07



OPTIONAL ACCESSORIES

ScanCut SERIES

30

brother
at your side

Tattered Lace
Designed by Stephanie Weiglman
Tattered Lace Pattern Collection 8
Mustersammlung Tattered Lace 8
Collection 8 de motifs dentelle Tattered Lace
Patronencollectie Tattered Lace 8
Collezione disegni Tattered Lace 8
Colección de patrones Tattered Lace 8
Konzepten und Ideen Tattered Lace 8
タタードレース パターンコレクション 8

ScanCutDX | ScanCut | DesignCut

20

8

Activation Card

31

brother
at your side

Tattered Lace
Designed by Stephanie Weiglman
Tattered Lace Pattern Collection 9
Mustersammlung Tattered Lace 9
Collection 9 de motifs dentelle Tattered Lace
Patronencollectie Tattered Lace 9
Collezione disegni Tattered Lace 9
Colección de patrones Tattered Lace 9
Konzepten und Ideen Tattered Lace 9
タタードレース パターンコレクション 9

ScanCutDX | ScanCut | DesignCut

24

9

Activation Card

32

brother
at your side

Tattered Lace
Designed by Stephanie Weiglman
Tattered Lace Pattern Collection 10
Mustersammlung Tattered Lace 10
Collection 10 de motifs dentelle Tattered Lace
Patronencollectie Tattered Lace 10
Collezione disegni Tattered Lace 10
Colección de patrones Tattered Lace 10
Konzepten und Ideen Tattered Lace 10
タタードレース パターンコレクション 10

ScanCutDX | ScanCut | DesignCut

25

10

Activation Card

33

brother
at your side

Tattered Lace
Designed by Stephanie Weiglman
Tattered Lace Pattern Collection 11
Mustersammlung Tattered Lace 11
Collection 11 de motifs dentelle Tattered Lace
Patronencollectie Tattered Lace 11
Collezione disegni Tattered Lace 11
Colección de patrones Tattered Lace 11
Konzepten und Ideen Tattered Lace 11
タタードレース パターンコレクション 11

ScanCutDX | ScanCut | DesignCut

16

11

Activation Card

34

brother
at your side

Tattered Lace
Designed by Stephanie Weiglman
Tattered Lace Pattern Collection 12
Mustersammlung Tattered Lace 12
Collection 12 de motifs dentelle Tattered Lace
Patronencollectie Tattered Lace 12
Collezione disegni Tattered Lace 12
Colección de patrones Tattered Lace 12
Konzepten und Ideen Tattered Lace 12
タタードレース パターンコレクション 12

ScanCutDX | ScanCut | DesignCut

18

12

Activation Card

35

brother
at your side

PigPong
Lettering Collection
Schriftartenammlung
Collection de caractères
Letter Collectie
Recueil de lettres
Colección de letras
Konzepten und Ideen
ピグポン グラフィックコレクション 13

ScanCutDX | ScanCut | DesignCut

108

Activation Card

36

brother
at your side

PigPong
Box Collection
Box-Kollektion
Collection de boîtes
Verzameling
Collezione di scatole
Colección completa
Konzepten und Ideen
ピグ ポングボックスコレクション

ScanCutDX | ScanCut | DesignCut

28

Activation Card

30

Tattered Lace Pattern Collection 8
CATTLP08

31

Tattered Lace Pattern Collection 9
CATTLP09

32

Tattered Lace Pattern Collection 10
CATTLP10

33

Tattered Lace Pattern Collection 11
CATTLP11

34

Tattered Lace Pattern Collection 12
CATTLP12

35

pigpong Lettering Collection 1
CAPPNP01

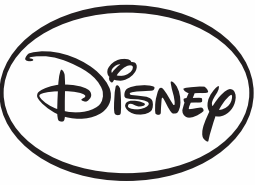
36

pigpong Lettering Collection 2
CAPPNP02



OPTIONAL ACCESSORIES

ScanCut SERIES



- 37 Disney Mickey Mouse & Minnie Mouse
Paper Craft Collection #1
CADSNP01
- 38 Disney Princess
Paper Craft Collection #1
CADSNP02
- 39 Disney Mickey & Friends Appliqué
Pattern Collection #1
CADSNP03
- 40 Disney Frozen Home-Deco
Pattern Collection #1
CADSNP04

- 41 Disney/Pixar Toy Story Home-Deco
Pattern Collection #1
CADSNP05
- 42 Disney Snow White and Belle
Paper Craft Collection
CADSNP06
- 43 Disney Cinderella and Ariel
Paper Craft Collection
CADSNP07
- 44 Disney Rapunzel and Aurora
Paper Craft Collection
CADSNP08