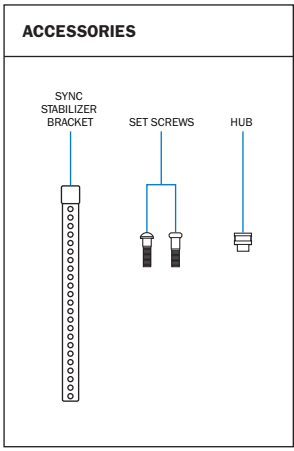
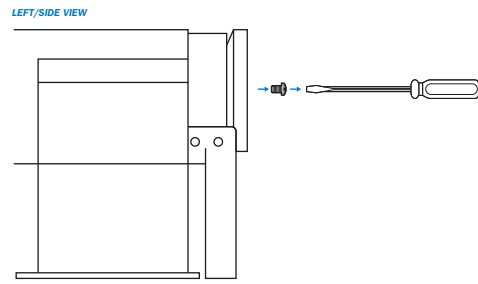


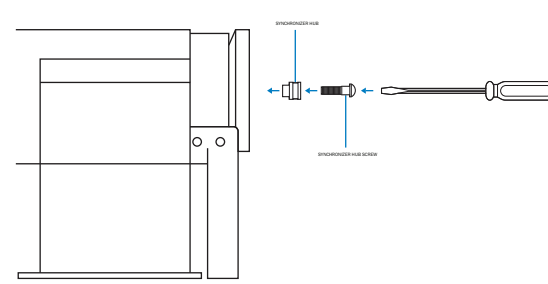
SYNCHRONIZER INSTALLATION INSTRUCTIONS



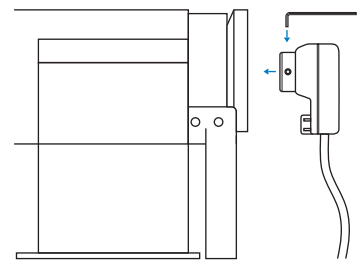
- 1** Remove the screw from the upper hand wheel by turning it counterclockwise.



- 2** Install the synchronizer hub using one of the two set-screws (dependant on model) provided.

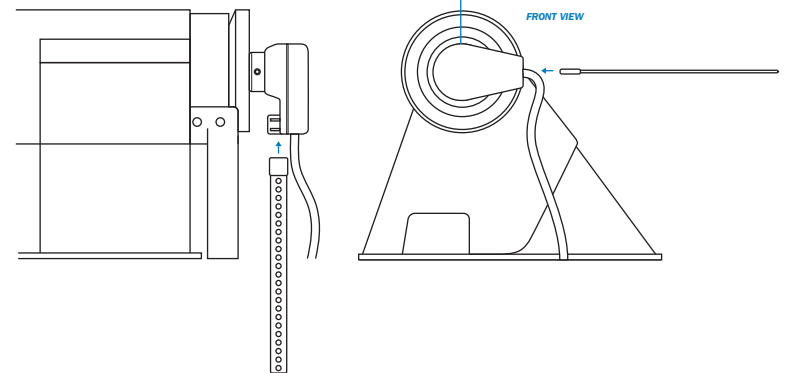


- 3** Mount synchronizer onto the hub and *slightly tighten* the two screws.

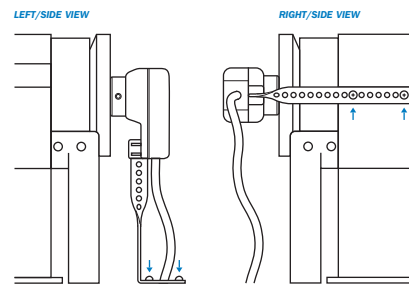


- 4** You must decide where it's best suitable to mount the synchronizer stabilizer bracket because the positioning won't be the same for all makes and models.

NOTE: TURNING THE SYNCHRONIZER 90° AND MOUNTING THE BRACKET TO THE RIGHT SIDE OF THE SEWING MACHINE IS USUALLY THE BEST METHOD. ON THE MSK-755 MODEL, MOUNTING THE BRACKET TO THE TABLE IS THE BEST METHOD (SEE NEXT STEP).

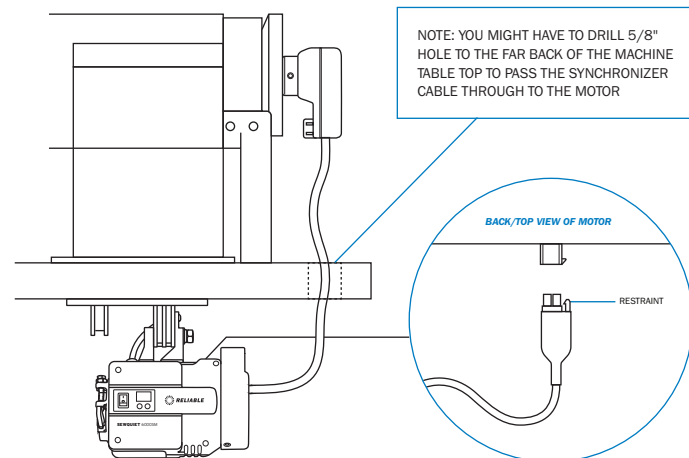


- 5** Once you have the synchronizer stabilizer bracket in place securely tighten the screws.



- 6** Plug the synchronizer cable into the synchronizer connector on the back of the motor with the restraint pointing upwards.

NOTE: YOU MIGHT HAVE TO DRILL 5/8" HOLE TO THE FAR BACK OF THE MACHINE TABLE TOP TO PASS THE SYNCHRONIZER CABLE THROUGH TO THE MOTOR



- 7** To set the needle position you'll need to first plug the motor into the power outlet.

- 8** Power on the motor.

- 9** Enable the synchronizer function – see enable/disable synchronizer in the instruction manual.

- 10** Slightly tighten the two synchronizer set screws.

- 11** Depress the treadle to slowly run the machine for a few stitches and then come to a stop. View the position of the needle.

- A. Hold onto the synchronizer with one hand, and with your other hand turn the handwheel towards you (counter clockwise) to lower the needle until the needle eye is below the surface of the needle plate without moving the synchronizer.
- B. Slowly run the machine again for a few more stitches and then come to a stop. See if the needle stops in same position with the eye of the needle below the surface of the needle plate and securely tighten the two synchronizer set screws.
- C. If the positioning of the needle is incorrect repeat steps A to B.