

# Pacesetter BES Lettering 3 – Fonts

---

The following fonts are installed with Pacesetter BES Lettering 3. Please note, that some fonts may contain more characters than show in the samples below. The font character previews within the software display the full set of characters available in each font.

## 2 Color Curly Script



A B C D E F G H I J K L M  
N O P Q R S T U V W X Y Z

The image displays the '2 Color Curly Script' font. The characters are arranged in two rows. The first row contains uppercase letters A through M, and the second row contains uppercase letters N through Z. Each letter is rendered in a thick, curly, and highly decorative script. The letters are filled with a vibrant red color and have a thick blue outline, creating a two-color effect. The overall style is reminiscent of traditional calligraphic or 'Satin' lettering.

*Recommended Font Heights for Satin Lettering:*

*Minimum: 1.02in/ 26mm*

*Maximum: 1.97in/ 50mm*

## 2Color Fancy Script



A B C D E F G H I J K L M  
N O P Q R S T U V W X Y Z  
a b c d e f g h i j k l m  
n o p q r s t u v w x y z

The image displays the '2Color Fancy Script' font. The characters are arranged in four rows. The first two rows contain uppercase letters A through Z. The third row contains lowercase letters a through m, and the fourth row contains lowercase letters n through z. Each letter is rendered in a thick, fancy, and highly decorative script. The letters are filled with a vibrant red color and have a thick blue outline, creating a two-color effect. The overall style is reminiscent of traditional calligraphic or 'Satin' lettering.

*Recommended Font Heights for Satin Lettering:*

*Minimum: 0.75in/ 19mm*

*Maximum: 1.77in/ 45mm*

### 2Color Sports

**A B C D E F G H I J K L M**  
**N O P Q R S T U V W X Y Z**

*Recommended Font Heights for Satin Lettering:*

*Minimum: 0.71in/ 18mm*

*Maximum: 2.56in/ 65mm*

### 2Color Team Medium

**A B C D E F G H I J K L M**  
**N O P Q R S T U V W X Y Z**

*Recommended Font Heights for Satin Lettering:*

*Minimum: 1.38in/ 35mm*

*Maximum: 2.95in/ 75mm*

### 2Color Team Small

**A B C D E F G H I J K L M**  
**N O P Q R S T U V W X Y Z**

*Recommended Font Heights for Satin Lettering:*

*Minimum: 0.39in/ 10mm*

*Maximum: 1.38in/ 35mm*



## 2Color Wild West

A B C D E F G H I J K L M  
N O P Q R S T U V W X Y Z  
a b c d e f g h i j k l m  
n o p q r s t u v w x y z

*Recommended Font Heights for Satin Lettering:*

*Minimum: 0.98in/ 25mm*

*Maximum: 1.38in/ 35mm*

## 3D Shadow

A B C D E F G H I J K L M  
N O P Q R S T U V W X Y Z

*Recommended Font Heights for Satin Lettering:*

*Minimum: 0.51in/ 13mm*

*Maximum: 1.97in/ 50mm*

## Adelaide

A B C D E F G H I J K L M  
N O P Q R S T U V W X Y Z  
a b c d e f g h i j k l m  
n o p q r s t u v w x y z

*Recommended Font Heights for Satin Lettering:*

*Minimum: 0.24 in/ 6mm*

*Maximum: 1.38in/ 35mm*

## Aidan

A B C D E F G H I J K L M  
N O P Q R S T U V W X Y Z  
a b c d e f g h i j k l m  
n o p q r s t u v w x y z

*Recommended Font Heights for Satin Lettering:*

*Minimum: 0.59in/ 15mm*

*Maximum: 1.57in/ 40mm*



### Alexandria

A B C D E F G H I J K L M  
 N O P Q R S T U V W X Y Z  
 a b c d e f g h i j k l m  
 n o p q r s t u v w x y z

Recommended Font Heights for Satin Lettering:  
 Minimum: 0.28in/ 7mm  
 Maximum: 2.05in/ 52mm

### Andante 4mm

A B C D E F G H I J K L M  
 N O P Q R S T U V W X Y Z  
 a b c d e f g h i j k l m  
 n o p q r s t u v w x y z

Recommended Font Heights for Satin Lettering:  
 Minimum: 0.16in/ 4mm  
 Maximum: 0.16in/ 4mm

### Andrea

A B C D E F G H I J K L M  
 N O P Q R S T U V W X Y Z  
 a b c d e f g h i j k l m  
 n o p q r s t u v w x y z

Recommended Font Heights for Satin Lettering:  
 Minimum: 0.47in/ 12mm  
 Maximum: 2.05in/ 52mm

### At best

A B C D e f g H i j K L M  
n o p q r s t u v w x y z

*Recommended Font Heights for Satin Lettering:*

*Minimum: 0.59in/ 15mm*

*Maximum: 1.38in/ 35mm*

### Aurora

A B C D E F G H I J K L M  
N O P Q R S T U V W X Y Z  
a b c d e f g h i j k l m  
n o p q r s t u v w x y z

*Recommended Font Heights for Satin Lettering:*

*Minimum: 0.47in/ 12mm*

*Maximum: 2.05in/ 52mm*



## Baby Point

A B C D E F G H I J K L M  
N O P Q R S T U V W X Y Z  
a b c d e f g h i j k l m  
n o p q r s t u v w x y z

*Recommended Font Heights for Satin Lettering:*

*Minimum: 0.59in/ 15mm*

*Maximum: 1.97in/ 50mm*

## Baked Fresh

A B C D E F G H I J K L M  
N O P Q R S T U V W X Y Z  
a b c d e f g h i j k l m  
n o p q r s t u v w x y z

*Recommended Font Heights for Satin Lettering:*

*Minimum: 0.59in/ 15mm*

*Maximum: 1.97in/ 50mm*

## Ballad Blended

**A B C D E F G H I J K L M**  
**N O P Q R S T U V W X Y Z**

*Recommended Font Heights for Satin Lettering:*

*Minimum: 0.47in/ 12mm*

*Maximum: 0.98in/ 25mm*

## Bambino 5mm

**A B C D E F G H I J K L M**  
**N O P Q R S T U V W X Y Z**  
**a b c d e f g h i j k l m**  
**n o p q r s t u v w x y z**

*Recommended Font Heights for Satin Lettering:*

*Minimum: 0.20in/ 5mm*

*Maximum: 0.20in/ 5mm*

## Barge

**A B C D E F G H I J K L M**  
**N O P Q R S T U V W X Y Z**

*Recommended Font Heights for Satin Lettering:*

*Minimum: 0.63in/ 16mm*

*Maximum: None*



### Bella Large

A B C D E F G H I J K L M  
 N O P Q R S T U V W X Y Z

*abcdefghijklm*

*nopqrstuvwxyz*

*Recommended Font Heights for Satin Lettering:*  
 Minimum: 2.00in/ 51mm  
 Maximum: 5.00in/127mm

### Bent 8mm

A B C D E F G H I J K L M  
 N O P Q R S T U V W X Y Z

*abcdefghijklm*

*nopqrstuvwxyz*

*Recommended Font Heights for Satin Lettering:*  
 Minimum: 0.31in/ 8mm  
 Maximum: 0.31in/ 8mm

### Black Belt

ABCDEFGHIJKLM  
NOPQRSTUVWXYZ  
ABCDEFGHIJKLM  
NOPQRSTUVWXYZ

*Recommended Font Heights for Satin Lettering:*

*Minimum: 0.31in/ 8mm*

*Maximum: 0.79in/ 20mm*

### Black Tie Large

ABCDEFGHIJKLM  
NOPQRSTUVWXYZ  
abcdefghijklm  
nopqrstuvwxyz

*Recommended Font Heights for Satin Lettering:*

*Minimum: 2.00in/ 51mm*

*Maximum: 5.00in/127mm*



## Blast

A B C D E F G H I J K L M  
N O P Q R S T U V W X Y Z  
a b c d e f g h i j k l m  
n o p q r s t u v w x y z

*Recommended Font Heights for Satin Lettering:*

*Minimum: 0.39in/ 10mm*

*Maximum: 1.18in/ 30mm*

## Blocks

A B C D E F G H I J K L M  
N O P Q R S T U V W X Y Z  
a b c d e f g h i j k l m  
n o p q r s t u v w x y z

*Recommended Font Heights for Satin Lettering:*

*Minimum: 0.20in/ 5mm*

*Maximum: 1.38in/ 35mm*

### Blocks Comp Light

ABCDEFGHIJKLM  
NOPQRSTUVWXYZ  
abcdefghijklm  
nopqrstuvwxyz

*Recommended Font Heights for Satin Lettering:*

*Minimum: 0.59in/ 15mm*

*Maximum: 2.95in/ 75mm*

### Blocks Compact

ABCDEFGHIJKLM  
NOPQRSTUVWXYZ  
abcdefghijklm  
nopqrstuvwxyz

*Recommended Font Heights for Satin Lettering:*

*Minimum: 0.24in/ 6mm*

*Maximum: 1.38in/ 35mm*



### Blocks Light

ABCDEFGHIJKLM  
NOPQRSTUVWXYZ  
abcdefghijklm  
nopqrstuvwxyz

*Recommended Font Heights for Satin Lettering:  
Minimum: 0.59in/ 15mm  
Maximum: 2.95in/ 75mm*

### Boldface Block

ABCDEFGHIJKLM  
NOPQRSTUVWXYZ

*Recommended Font Heights for Satin Lettering:  
Minimum: 0.20in/ 5mm  
Maximum: 1.18in/ 30mm*



### Bottled Pop

A B C D E F G H I J K L M  
N O P Q R S T U V W X Y Z  
a b c d e f g h i j k l m  
n o p q r s t u v w x y z

*Recommended Font Heights for Satin Lettering:*  
*Minimum: 0.59in/ 15mm*  
*Maximum: 1.57in/ 40mm*

### Brandon

A B C D E F G H I J K L M  
N O P Q R S T U V W X Y Z  
a b c d e f g h i j k l m  
n o p q r s t u v w x y z

*Recommended Font Heights for Satin Lettering:*  
*Minimum: .24in/ 6mm*  
*Maximum: 1.18in/30mm*

### Buckingham

A B C D E F G H I J K L M  
 N O P Q R S T U V W X Y Z  
 a b c d e f g h i j k l m  
 n o p q r s t u v w x y z

*Recommended Font Heights for Satin Lettering:*  
 Minimum: 0.31in/ 8mm  
 Maximum: 2.01in/ 51mm

### Camp Out

A B C D E F G H I J K L M  
 N O P Q R S T U V W X Y Z

*Recommended Font Heights for Satin Lettering:*  
 Minimum: 0.20in/ 5mm  
 Maximum: 0.98in/ 25mm

## Carefree

ABCDEFGHIJKLM  
NOPQRSTUVWXYZ  
abcdefghijklm  
nopqrstuvwxyz

*Recommended Font Heights for Satin Lettering:*

*Minimum: 0.39in/ 10mm*

*Maximum: 1.57in/ 40mm*

## Carmine

ABCDEFGHIJKLM  
NOPQRSTUVWXYZ  
abcdefghijklm  
nopqrstuvwxyz

*Recommended Font Heights for Satin Lettering:*

*Minimum: 0.24in/ 6mm*

*Maximum: 1.57in/ 40mm*



### Cartoon

A B C D E F G H I J K L M  
N O P Q R S T U V W X Y Z

*Recommended Font Heights for Satin Lettering:  
Minimum: 0.47in/ 12mm  
Maximum: 1.97in/ 50mm*

### Cartoon Blended

A B C D E F G H I J K L M  
N O P Q R S T U V W X Y Z

*Recommended Font Heights for Satin Lettering:  
Minimum: 0.55in/ 14mm  
Maximum: 1.18in/ 30mm*

### Celebration

A B C D E F G H I J K L M  
N O P Q R S T U V W X Y Z

*Recommended Font Heights for Satin Lettering:  
Minimum: 0.98in/ 25mm  
Maximum: 1.97in/ 50mm*

## Celestial

A B C D E F G H I J K L M  
N O P Q R S T U V W X Y Z  
a b c d e f g h i j k l m  
n o p q r s t u v w x y z

*Recommended Font Heights for Satin Lettering:*

*Minimum: 0.98in/ 25mm*

*Maximum: 2.95in/ 75mm*

## Chalk

A B C D E F G H I J K L M  
N O P Q R S T U V W X Y Z  
a b c d e f g h i j k l m  
n o p q r s t u v w x y z

*Recommended Font Heights for Satin Lettering:*

*Minimum: 0.31in/ 8mm*

*Maximum: 1.26in/ 32mm*

## Charmed Large

A B C D E F G H I J K L M  
N O P Q R S T U V W X Y Z  
a b c d e f g h i j k l m  
n o p q r s t u v w x y z

*Recommended Font Heights for Satin Lettering:*

*Minimum: 2.00in/ 51mm*

*Maximum: 5.00in/127mm*



### Cherub

A B C D E F G H I J K L M  
 N O P Q R S T U V W X Y Z  
 a b c d e f g h i j k l m  
 n o p q r s t u v w x y z

*Recommended Font Heights for Satin Lettering:  
 Minimum: 0.59in/ 15mm  
 Maximum: 2.17in/ 55mm*

### Choppers

A B C D E F G H I J K L M  
 N O P Q R S T U V W X Y Z

*Recommended Font Heights for Satin Lettering:  
 Minimum: 0.98in/ 25mm  
 Maximum: 1.97in/ 50mm*

## Classico

**A B C D E F G H I J K L M**  
**N O P Q R S T U V W X Y Z**  
*abcdefghijklmnop*  
*nopqrstuvwxyz*

*Recommended Font Heights for Satin Lettering:*  
*Minimum: 0.39in/ 10mm*  
*Maximum: 1.77in/ 45mm*

## Classroom

**A B C D E F G H I J K L M**  
**N O P Q R S T U V W X Y Z**  
**abcdefghijklmnop**  
**nopqrstuvwxyz**

*Recommended Font Heights for Satin Lettering:*  
*Minimum: 0.28in/ 7mm*  
*Maximum: 2.05in/ 52mm*



## Clocks

ABCDEFGHIJKLM  
NOPQ RSTUVWXYZ  
abcdefghijklm  
nopqrstuvwxyz

*Recommended Font Heights for Satin Lettering:*

*Minimum: 0.43in/ 11mm*

*Maximum: 2.05in/ 52mm*

## Daily

ABCDEFGHIJKLM  
NOPQRSTUVWXYZ  
abcdefghijklm  
nopqrstuvwxyz

*Recommended Font Heights for Satin Lettering:*

*Minimum: 0.39in/ 10mm*

*Maximum: 1.38in/ 35mm*



### Dante

A B C D E F G H I J K L M  
N O P Q R S T U V W X Y Z

*Recommended Font Heights for Satin Lettering:*

*Minimum: 0.24in/ 6mm*

*Maximum: 1.97in/ 50mm*

### December

A B C D E F G H I J K L M  
N O P Q R S T U V W X Y Z

a b c d e f g h i j k l m

n o p q r s t u v w x y z

*Recommended Font Heights for Satin Lettering:*

*Minimum: 0.39in/ 10mm*

*Maximum: 0.98in/ 25mm*

### Deco

A B C D E F G H I J K L M  
N O P Q R S T U V W X Y Z

*Recommended Font Heights for Satin Lettering:*

*Minimum: 0.39in/ 10mm*

*Maximum: 0.79in/ 20mm*

## Desmond

**A B C D E F G H I J K L M**  
**N O P Q R S T U V W X Y Z**  
**a b c d e f g h i j k l m**  
**n o p q r s t u v w x y z**

*Recommended Font Heights for Satin Lettering:*

*Minimum: 0.28in/ 7mm*

*Maximum: 0.79in/ 20mm*

## Disco

**A B C D E F G H I J K L M**  
**N O P Q R S T U V W X Y Z**  
**a b c d e f g h i j k l m**  
**n o p q r s t u v w x y z**

*Recommended Font Heights for Satin Lettering:*

*Minimum: 0.59in/ 15mm*

*Maximum: 0.79in/ 20mm*

## Discovery

A B C D E F G H I J K L M  
N O P Q R S T U V W X Y Z  
a b c d e f g h i j k l m  
n o p q r s t u v w x y z

*Recommended Font Heights for Satin Lettering:  
Minimum: 0.47in/ 12mm  
Maximum: 1.77in/ 45mm*



### Doodle

A B C D E F G H I J K L M  
 N O P Q R S T U V W X Y Z  
 a b c d e f g h i j k l m  
 n o p q r s t u v w x y z

*Recommended Font Heights for Satin Lettering:*

*Minimum: 0.59in/ 15mm*

*Maximum: 1.97in/ 50mm*

### Dottie

A B C D E F G H I J K L M  
 N O P Q R S T U V W X Y Z  
 a b c d e f g h i j k l m  
 n o p q r s t u v w x y z

*Recommended Font Heights for Satin Lettering:*

*Minimum: 0.28in/ 7mm*

*Maximum: 0.79in/ 20mm*

## Drake

ABCDEFGHIJKLM  
NOPQRSTUVWXYZ  
abcdefghijklm  
nopqrstuvwxyz

*Recommended Font Heights for Satin Lettering:*

*Minimum: 0.28in/ 7mm*

*Maximum: 2.05in/ 52mm*

## Drake 5mm

ABCDEFGHIJKLM  
NOPQRSTUVWXYZ  
abcdefghijklm  
nopqrstuvwxyz

*Recommended Font Heights for Satin Lettering:*

*Minimum: 0.20in/ 5mm*

*Maximum: 0.20in/ 5mm*

## Eduarda

A B C D E F G H I J K L M  
N O P Q R S T U V W X Y Z  
a b c d e f g h i j k l m  
n o p q r s t u v w x y z

*Recommended Font Heights for Satin Lettering:*

*Minimum: 0.31in/ 8mm*

*Maximum: 2.36in/ 60mm*

## Electric Avenue

A B C D E F G H I J K L M  
N O P Q R S T U V W X Y Z  
a b c d e f g h i j k l m  
n o p q r s t u v w x y z

*Recommended Font Heights for Satin Lettering:*

*Minimum: 0.59in/ 15mm*

*Maximum: 1.38in/ 35mm*



## Elise

ABCDEFGHIJKLM  
NOPQRSTUVWXYZ  
abcdefghijklm  
nopqrstuvwxyz

*Recommended Font Heights for Satin Lettering:*

*Minimum: 0.39in/ 10mm*

*Maximum: 1.38in/ 35mm*

## Elmwood

ABCDEFGHIJKLM  
NOPQRSTUVWXYZ  
abcdefghijklm  
nopqrstuvwxyz

*Recommended Font Heights for Satin Lettering:*

*Minimum: 0.24in/ 6mm*

*Maximum: 1.38in/ 35mm*

## Endeavor

A B C D E F G H I J K L M  
N O P Q R S T U V W X Y Z

*Recommended Font Heights for Satin Lettering:*

*Minimum: 0.28in/ 7mm*

*Maximum: 1.38in/ 35mm*

## Enterprise

A B C D E F G H I J K L M  
N O P Q R S T U V W X Y Z

*Recommended Font Heights for Satin Lettering:*

*Minimum: 0.20in/5mm*

*Maximum: 1.18in/ 30mm*

## Estella

A B C D E F G H I J K L M  
N O P Q R S T U V W X Y Z  
a b c d e f g h i j k l m  
n o p q r s t u v w x y z

*Recommended Font Heights for Satin Lettering:*

*Minimum: 0.59in/ 15mm*

*Maximum: 1.38in/ 35mm*

### Everyday Script

**A B C D E F G H I J K L M**  
**N O P Q R S T U V W X Y Z**  
*abcdefghijklm*  
*nopqrstuvwxyz*

*Recommended Font Heights for Satin Lettering:*  
*Minimum: 0.39in/ 10mm*  
*Maximum: 1.38in/ 35mm*

### Figaro

**A B C D E F G H I J K L M**  
**N O P Q R S T U V W X Y Z**  
**abcdefghijklm**  
**nopqrstuvwxyz**

*Recommended Font Heights for Satin Lettering:*  
*Minimum: 0.28in/ 7mm*  
*Maximum: 0.98in/ 25mm*



### Flamboyance 4mm



Recommended Font Heights for Satin Lettering:

Minimum: 0.16in/ 4mm

Maximum: 0.16in/ 4mm

### Fluid Block



Recommended Font Heights for Satin Lettering:

Minimum: 0.20in/ 5mm

Maximum: 1.57in/ 40mm

### Fortified 4mm



Recommended Font Heights for Satin Lettering:

Minimum: 0.16in/ 4mm

Maximum: 0.16in/ 4mm

## Frankie Blended

ABCDEFGHIJKLM  
NOPQRSTUVWXYZ

*Recommended Font Heights for Satin Lettering:*

*Minimum: 0.39in/ 10mm*

*Maximum: 0.79in/ 20mm*

## Galactic

ABCDEFGHIJKLM  
NOPQRSTUVWXYZ  
abcdefghijklm  
nopqrstuvwxyz

*Recommended Font Heights for Satin Lettering:*

*Minimum: 0.31in/ 8mm*

*Maximum: 0.98in/ 25mm*

### Girly Curls

A B C D E F G H I J K L M  
 N O P Q R S T U V W X Y Z  
 a b c d e f g h i j k l m  
 n o p q r s t u v w x y z

*Recommended Font Heights for Satin Lettering:*  
 Minimum: .50in/ 13mm  
 Maximum: None

### Globe

**A B C D E F G H I J K L M**  
**N O P Q R S T U V W X Y Z**  
**a b c d e f g h i j k l m**  
**n o p q r s t u v w x y z**

*Recommended Font Heights for Satin Lettering:*  
 Minimum: 0.31in/ 8mm  
 Maximum: 1.38in/ 35mm



### Greek

Α Β Ψ Δ Ε Φ Γ Η Ξ Κ Λ Μ  
Ν Ο Π Ρ Σ Τ Θ Ω Χ Υ Ζ

*Recommended Font Heights for Satin Lettering:*

*Minimum: 0.24in/ 6mm*

*Maximum: 0.79in/ 20mm*

### Greek Block

Α Β Ψ Δ Ε Φ Γ Η Ξ Κ Λ Μ  
Ν Ο Π Ρ Σ Τ Θ Ω Σ Χ Υ Ζ  
α β ψ δ ε φ γ η ι ξ κ λ μ  
ν ο π ρ σ τ θ ω ς χ υ ζ

*Recommended Font Heights for Satin Lettering:*

*Minimum: 0.24in/ 6mm*

*Maximum: 1.50in/ 38mm*

### Greek Mixed

ΑΒΧΔΕΦΓΗΙΚΛΜ  
 ΝΟΠΘΡΣΤΥςΩΞΨΖ  
 αβχδεφγηικλμ  
 νοπθροτυωξψζ

*Recommended Font Heights for Satin Lettering:*  
 Minimum: 0.39in/ 10mm  
 Maximum: 1.18in/ 30mm

### Gregory

A B C D E F G H I J K L M  
 N O P Q R S T U V W X Y Z  
 a b c d e f g h i j k l m  
 n o p q r s t u v w x y z

*Recommended Font Heights for Satin Lettering:*  
 Minimum: 0.35in/ 9mm  
 Maximum: 1.18in/ 30mm

## Grimaldi

A B C D E F G H I J K L M  
N O P Q R S T U V W X Y Z  
a b c d e f g h i j k l m  
n o p q r s t u v w x y z

*Recommended Font Heights for Satin Lettering:*

*Minimum: 0.59in/ 15mm*

*Maximum: 1.97in/ 50mm*

## Hancock

A B C D E F G H I J K L M  
N O P Q R S T U V W X Y Z  
a b c d e f g h i j k l m  
n o p q r s t u v w x y z

*Recommended Font Heights for Satin Lettering:*

*Minimum: 0.47in/ 12mm*

*Maximum: 2.17in/ 55mm*



## Harpsichord

A B C D E F G H I J K L M  
 N O P Q R S T U V W X Y Z  
 a b c d e f g h i j k l m  
 n o p q r s t u v w x y z

*Recommended Font Heights for Satin Lettering:*

*Minimum: 0.59in/ 15mm*

*Maximum: 1.77in/ 45mm*

## Hebrew Traditional

א ב ח ד ע פ ג ה י ת ק ל מ  
 נ ס פ כ ר ש ט ס ו ד צ י ז ון

*Recommended Font Heights for Satin Lettering:*

*Minimum: 0.28 inches/ 7mm*

*Maximum: 1.97 inches/ 50mm*

## Hortons

A B C D E F G H I J K L M  
N O P Q R S T U V W X Y Z  
a b c d e f g h i j k l m  
n o p q r s t u v w x y z

*Recommended Font Heights for Satin Lettering:*

*Minimum: 0.28in/ 7mm*

*Maximum: 1.18in/ 30mm*

## Hounds

A B C D E F G H I J K L M  
N O P Q R S T U V W X Y Z  
a b c d e f g h i j k l m  
n o p q r s t u v w x y z

*Recommended Font Heights for Satin Lettering:*

*Minimum: 0.47in/ 12mm*

*Maximum: 1.38in/ 35mm*

## Jazz

ABCDEFGHIJKLM  
NOPQRS TUVWXYZ  
abcdefghijklm  
nopqrs tuvwxyz

*Recommended Font Heights for Satin Lettering:*

*Minimum: 0.28in/ 7mm*

*Maximum: 1.77in/ 45mm*



### Jacks

A B C D E F G H I J K L M  
 N O P Q R S T U V W X Y Z  
 a b c d e f g h i j k l m  
 n o p q r s t u v w x y z

*Recommended Font Heights for Satin Lettering:*  
 Minimum: .50in/ 13mm  
 Maximum: None

### Journey

A B C D E F G H I J K L M  
 N O P Q R S T U V W X Y Z  
 a b c d e f g h i j k l m  
 n o p q r s t u v w x y z

*Recommended Font Heights for Satin Lettering:*

Minimum: 0.31in/ 8mm  
Maximum: 1.38in/35mm

### Keynote

A B C D E F G H I J K L M  
N O P Q R S T U V W X Y Z

Recommended Font Heights for Satin Lettering:  
Minimum: 0.98in/ 25mm  
Maximum: 2.99in/ 76mm

### Layla

A B C D E F G H I J K L M  
N O P Q R S T U V W X Y Z  
a b c d e f g h i j k l m  
n o p q r s t u v w x y z

Recommended Font Heights for Satin Lettering:  
Minimum: 0.31in/ 8mm  
Maximum: 1.57in/ 40mm

## Lisa

A B C D E F G H I J K L M  
N O P Q R S T U V W X Y Z  
a b c d e f g h i j k l m  
n o p q r s t u v w x y z

*Recommended Font Heights for Satin Lettering:*

*Minimum: 0.63in/ 16mm*

*Maximum: 3.54in/ 90mm*

## Little Block 4mm

A B C D E F G H I J K L M  
N O P Q R S T U V W X Y Z

*Recommended Font Heights for Satin Lettering:*

*Minimum: 0.16in/ 4mm*

*Maximum: 0.16in/ 4mm*



## Little Ones

A B C D E F G H I J K L M  
N O P Q R S T U V W X Y Z  
a b c d e f g h i j k l m  
n o p q r s t u v w x y z

*Recommended Font Heights for Satin Lettering:*

*Minimum: 0.39in/ 10mm*

*Maximum: 1.38in/ 35mm*

## Lively

A B C D E F G H I J K L M  
N O P Q R S T U V W X Y Z  
a b c d e f g h i j k l m  
n o p q r s t u v w x y z

*Recommended Font Heights for Satin Lettering:*

*Minimum: 0.24in/ 6mm*

Maximum: 1.57in/ 40mm

### Madelines

A B C D E F G H I J K L M  
N O P Q R S T U V W X Y Z  
a b c d e f g h i j k l m  
n o p q r s t u v w x y z

Recommended Font Heights for Satin Lettering:

Minimum: 0.39in/ 10mm

Maximum: 1.97in/ 50mm

### Marilyn Uppercase

A B C D E F G H I J K L M  
N O P Q R S T U V W X Y Z

Recommended Font Heights for Satin Lettering:

Minimum: 0.24in/ 6mm

Maximum: 1.57in/ 40mm



### Medieval

A B C D E F G H I J K L M  
 N O P Q R S T U V W X Y Z  
 a b c d e f g h i j k l m  
 n o p q r s t u v w x y z

*Recommended Font Heights for Satin Lettering:*  
 Minimum: 0.24in/ 6mm  
 Maximum: 1.38in/ 35mm

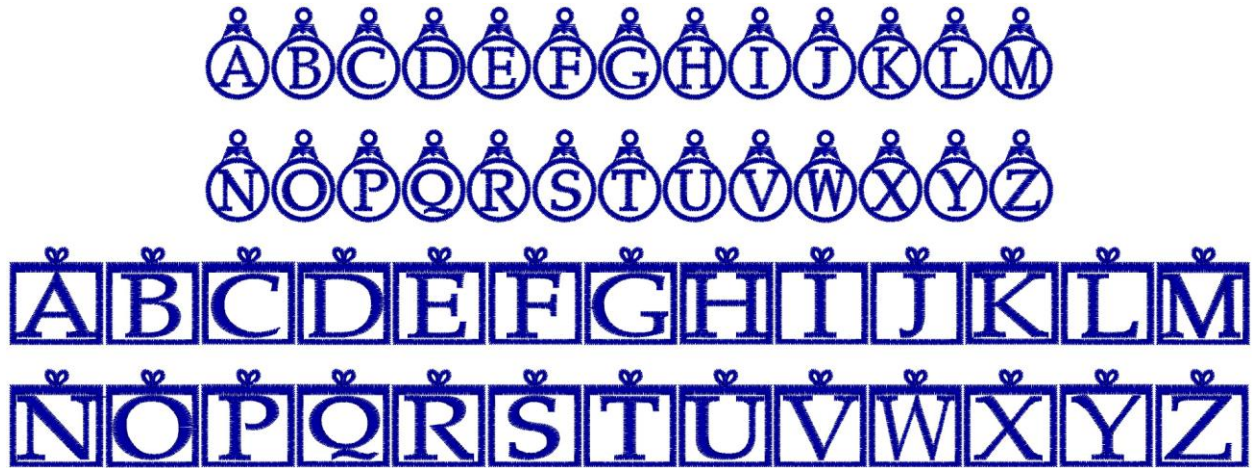
### Merlin

A B C D E F G H I J K L M  
 N O P Q R S T U V W X Y Z  
 A B C D E F G H I J K L O  
 N O P Q R S T U V O X Y Z

*Recommended Font Heights for Satin Lettering:*  
 Minimum: 0.63in/ 16mm  
 Maximum: 1.38in/ 35mm



## Merriment



*Recommended Font Heights for Satin Lettering:*  
*Minimum: 0.79in/ 20mm*  
*Maximum: 2.17in/ 55mm*

## Metal Stamp



*Recommended Font Heights for Satin Lettering:*  
*Minimum: 0.31in/ 8mm*  
*Maximum: 1.10in/ 28mm*

## Middleton

A B C D E F G H I J K L M  
N O P Q R S T U V W X Y Z  
a b c d e f g h i j k l m  
n o p q r s t u v w x y z

*Recommended Font Heights for Satin Lettering:*

*Minimum: 0.2in/ 5mm*

*Maximum: 1.38in/ 35mm*

## Ministry

A B C D E F G H I J K L M  
N O P Q R S T U V W X Y Z  
a b c d e f g h i j k l m  
n o p q r s t u v w x y z

*Recommended Font Heights for Satin Lettering:*

*Minimum: 0.31in/ 8mm*

*Maximum: .98in/ 25mm*



## Moirai

ABCDEFGHIJKLM  
 NOPQRSTUVWXYZ  
 abcdefghijklm  
 nopqrstuvwxyz

*Recommended Font Heights for Satin Lettering:*

*Minimum: 0.28in/ 7mm*

*Maximum: 1.18in/ 30mm*

## Mon Cheri

ABCDEFGHIJKLM  
 NOPQRSTUVWXYZ  
 abcdefghijklm  
 nopqrstuvwxyz

*Recommended Font Heights for Satin Lettering:*

*Minimum: 0.59in/ 15mm*

*Maximum: 1.38in/ 35mm*



### My Love

A B C D E F G H I J K L M  
N O P Q R S T U V W X Y Z

*Recommended Font Heights for Satin Lettering:*

*Minimum: 0.79in/ 20mm*

*Maximum: 3.15in/ 80mm*

### Neolithic

A B C D E F G H I J K L M  
N O P Q R S T U V W X Y Z

*Recommended Font Heights for Satin Lettering:*

*Minimum: 0.24in/ 6mm*

*Maximum: 0.79in/ 20mm*

### Nicole

A B C D E F G H I J K L M  
N O P Q R S T U V W X Y Z  
a b c d e f g h i j k l m  
n o p q r s t u v w x y z

*Recommended Font Heights for Satin Lettering:*

Minimum: 0.39in/ 10mm  
Maximum: 4.02in/ 102mm

### Notable Script

A B C D E F G H I J K L M  
N O P Q R S T U V W X Y Z  
a b c d e f g h i j k l m  
n o p q r s t u v w x y z

Recommended Font Heights for Satin Lettering:  
Minimum: 0.47in/ 12mm  
Maximum: 2.56in/ 65mm

### Onorino

A B C D E F G H I J K L M  
N O P Q R S T U V W X Y Z

Recommended Font Heights for Satin Lettering:  
Minimum: 0.28in/ 7mm  
Maximum: 1.77in/ 45mm

### Outer Limits

A B C D E F G H I J K L M  
N O P Q R S T U V W X Y Z

Recommended Font Heights for Satin Lettering:



Minimum: 0.79in/ 20mm  
Maximum: 1.97in/ 50mm

### Pageant

A B C D E F G H I J K L M  
N O P Q R S T U V W X Y Z  
a b c d e f g h i j k l m  
n o p q r s t u v w x y z

Recommended Font Heights for Satin Lettering:  
Minimum: 0.28in/ 7mm  
Maximum: 2.05in/ 52mm

### Painted by

A B C D E F G H I J K L M  
N O P Q R S T U V W X Y Z  
a b c d e f g h i j k l m  
n o p q r s t u v w x y z

Recommended Font Heights for Satin Lettering:  
Minimum: 0.31in/ 8mm  
Maximum: 1.38in/ 35mm



### Pantheon

A B C D E F G H I J K L M  
 N O P Q R S T U V W X Y Z  
 a b c d e f g h i j k l m  
 n o p q r s t u v w x y z

*Recommended Font Heights for Satin Lettering:*

*Minimum: 0.59in/ 15mm*

*Maximum: 1.97in/ 50mm*

### Patriot

A B C D E F G H I J K L M  
 N O P Q R S T U V W X Y Z

*Recommended Font Heights for Satin Lettering:*

*Minimum: 0.79in/ 20mm*

*Maximum: 2.17in/ 55mm*

### Paw Prints

A B C D E F G H I J K L M  
 N O P Q R S T U V W X Y Z

*Recommended Font Heights for Satin Lettering:*

*Minimum: 0.59in/ 15mm*

*Maximum: 1.57in/ 40mm*

### Pebbles

abcdefghijklmnopqrstuvwxyz  
abcdefghijklmnopqrstuvwxyz

*Recommended Font Heights for Satin Lettering:*

*Minimum: 0.31in/ 8mm*

*Maximum: 1.18in/ 30mm*

### Pep Rally

ABCDEFGHIJKLM  
NOPQRSTUVWXYZ

*Recommended Font Heights for Satin Lettering:*

*Minimum: 0.31in/ 8mm*

*Maximum: 2.17in/ 55mm*

### Petite 4 mm

ABCDEFGHIJKLM  
NOPQRSTUVWXYZ  
abcdefghijklm  
nopqrstuvwxyz

*Recommended Font Heights for Satin Lettering:*

*Minimum: 0.16in/ 4mm*

*Maximum: 0.16in/ 4mm*

### Phillip

**A B C D E F G H I J K L M**  
**N O P Q R S T U V W X Y Z**  
**a b c d e f g h i j k l m**  
**n o p q r s t u v w x y z**

*Recommended Font Heights for Satin Lettering:*  
 Minimum: 0.24in/ 6mm  
 Maximum: 0.59in/ 15mm

### Piccolo 4mm

**A B C D E F G H I J K L M**  
**N O P Q R S T U V W X Y Z**  
**a b c d e f g h i j k l m**  
**n o p q r s t u v w x y z**

*Recommended Font Heights for Satin Lettering:*  
 Minimum: 0.16in/ 4mm  
 Maximum: 0.16in/ 4mm

### Plain Bold 5mm

**A B C D E F G H I J K L M**  
**N O P Q R S T U V W X Y Z**  
**a b c d e f g h i j k l m**  
**n o p q r s t u v w x y z**

*Recommended Font Heights for Satin Lettering:*  
 Minimum: 0.20in/ 5mm  
 Maximum: 0.20in/ 5mm



### Plumage

A B C D E F G H I J K L M  
 N O P Q R S T U V W X Y Z  
 a b c d e f g h i j k l m  
 n o p q r s t u v w x y z

*Recommended Font Heights for Satin Lettering:  
 Minimum: 0.59in/ 15mm  
 Maximum: 1.97in/ 50mm*

### Potpourri

A B C D E F G H I J K L M  
 N O P Q R S T U V W X Y Z  
 a b c d e f g h i j k l m  
 n o p q r s t u v w x y z

*Recommended Font Heights for Satin Lettering:  
 Minimum: 0.28in/ 7mm  
 Maximum: 1.38in/ 35mm*

### Precision

A B C D E F G H I J K L M  
 N O P Q R S T U V W X Y Z  
 a b c d e f g h i j k l m  
 n o p q r s t u v w x y z

*Recommended Font Heights for Satin Lettering:*  
 Minimum: 0.79in/ 20mm  
 Maximum: 2.76in/ 70mm

### Presto

A B C D E F G H I J K L M  
 N O P Q R S T U V W X Y Z  
 a b c d e f g h i j k l m  
 n o p q r s t u v w x y z

*Recommended Font Heights for Satin Lettering:*  
 Minimum: 0.39in/ 10mm  
 Maximum: 1.18in/ 30mm



## Primavera

A B C D E F G H I J K L M  
 N O P Q R S T U V W X Y Z  
 a b c d e f g h i j k l m  
 n o p q r s t u v w x y z

Recommended Font Heights for Satin Lettering:

Minimum: 0.31in/ 8mm

Maximum: 2.17in/ 55mm

## Quantum

A B C D E F G H I J K L M  
 N O P Q R S T U V W X Y Z  
 a b c d e f g h i j k l m  
 n o p q r s t u v w x y z

Recommended Font Heights for Satin Lettering:

Minimum: 0.39in/ 10mm

Maximum: 1.57in/ 40mm



### Quirk

A B C D E F G H I J K L M  
 N O P Q R S T U V W X Y Z  
 a b c d e f g h i j k l m  
 n o p q r s t u v w x y z

*Recommended Font Heights for Satin Lettering:*  
 Minimum: 0.24in/ 6mm  
 Maximum: 1.57in/ 40mm

### Raleigh

A B C D E F G H I J K L M  
 N O P Q R S T U V W X Y Z  
 a b c d e f g h i j k l m  
 n o p q r s t u v w x y z

*Recommended Font Heights for Satin Lettering:*  
 Minimum: 0.79in/ 20mm  
 Maximum: 2.36in/ 60mm

### Reckless

A B C D E F G H I J K L M  
 N O P Q R S T U V W X Y Z  
 a b c d e f g h i j k l m  
 n o p q r s t u v w x y z

*Recommended Font Heights for Satin Lettering:*

*Minimum: 0.28in/ 7mm*

*Maximum: 1.97in/ 50mm*

### Regale

A B C D E F G H I J K L M  
 N O P Q R S T U V W X Y Z  
 a b c d e f g h i j k l m  
 n o p q r s t u v w x y z

*Recommended Font Heights for Satin Lettering:*

*Minimum: 0.24in/ 6mm*

*Maximum: 1.57in/ 40mm*

### Registry

A B C D E F G H I J K L M  
 N O P Q R S T U V W X Y Z  
 a b c d e f g h i j k l m  
 n o p q r s t u v w x y z

*Recommended Font Heights for Satin Lettering:*

*Minimum: 0.59in/ 15mm*

*Maximum: 0.98in/ 25mm*

### Robin

A B C D E F G H I J K L M  
 N O P Q R S T U V W X Y Z  
 a b c d e f g h i j k l m  
 n o p q r s t u v w x y z

*Recommended Font Heights for Satin Lettering:*

*Minimum: 0.39in/ 10mm*

*Maximum: 1.18in/ 30mm*



## Roma

A B C D E F G H I J K L M  
N O P Q R S T U V W X Y Z  
a b c d e f g h i j k l m  
n o p q r s t u v w x y z

*Recommended Font Heights for Satin Lettering:*

*Minimum: 0.59in/ 15mm*

*Maximum: 1.77in/ 45mm*

## Run Block

A B C D E F G H I J K L M  
N O P Q R S T U V W X Y Z

*Recommended Font Heights for Satin Lettering:*

*Minimum: 0.12in/ 3mm*

*Maximum: None*

## Run Kiddie

ABCDEFGHIJKLM  
NOPQRSTUVWXYZ  
abcdefghijklm  
nopqrstuvwxyz

*Recommended Font Heights for Satin Lettering:*

*Minimum: 0.12in/ 3mm*

*Maximum: None*

## Run Script

ABCDEFGHIJKLM  
NOPQRSTUVWXYZ  
abcdefghijklm  
nopqrstuvwxyz

*Recommended Font Heights for Satin Lettering:*

*Minimum: 0.12in/ 3mm*

*Maximum: None*

### Russian

ФИСВУАПРШОЛДЬ  
 ТЩЗЙКЫЕГМЦЧНЯ  
 ЖЭ БЮХЪЁ  
 фисвуапршолдь  
 тщзйкыегмцчня  
 жжбюхъэ

*Recommended Font Heights for Satin Lettering:*

*Minimum: 0.32in/ 8mm*

*Maximum: 1.18in/30mm*

### Scrawled

A B C D E F G H I J K L M  
 N O P Q R S T U V W X Y Z  
 a b c d e f g h i j k l m  
 n o p q r s t u v w x y z

*Recommended Font Heights for Satin Lettering:*

*Minimum: 0.39in/ 10mm*

*Maximum: 3.15in/ 80mm*



### Serif Bold

**A B C D E F G H I J K L M**  
**N O P Q R S T U V W X Y Z**  
**a b c d e f g h i j k l m**  
**n o p q r s t u v w x y z**

*Recommended Font Heights for Satin Lettering:*

*Minimum: 0.24in/ 6mm*

*Maximum: 1.10in/ 28mm*

### Serif Bold Comp

**A B C D E D E F G H I J K L M**  
**N O P Q R S T U V W X Y Z**  
**a b c d e f g h i j k l m**  
**n o p q r s t u v w x y z**

*Recommended Font Heights for Satin Lettering:*

*Minimum: 0.24in/ 6mm*

*Maximum: 1.02in/ 26mm*

### Serif Light

ABCDED EFGHIJKLM  
NOPQRSTU VWXYZ  
abcdefghijklmnop  
nopqrstuvwxyz

*Recommended Font Heights for Satin Lettering:*

*Minimum: 0.79in/ 20mm*

*Maximum: 2.56in/ 65mm*

### Serif Light Comp

ABCDED EFGHIJKLM  
NOPQRSTU VWXYZ  
abcdefghijklmnop  
nopqrstuvwxyz

*Recommended Font Heights for Satin Lettering:*

*Minimum: 0.79in/ 20mm*

*Maximum: 2.56in/ 65mm*



### Shadowing

A B C D E F G H I J K L M  
N O P Q R S T U V W X Y Z

*Recommended Font Heights for Satin Lettering:*

*Minimum: 0.47in/ 12mm*

*Maximum: 4.02in/ 102mm*

### Shelley

A B C D E F G H I J K L M  
N O P Q R S T U V W X Y Z  
a b c d e f g h i j k l m  
n o p q r s t u v w x y z

*Recommended Font Heights for Satin Lettering:*

*Minimum: 0.51in/ 13mm*

*Maximum: 2.95in/ 75mm*

### Signal

A B C D E F G H I J K L M  
N O P Q R S T U V W X Y Z  
a b c d e f g h i j k l m  
n o p q r s t u v w x y z

*Recommended Font Heights for Satin Lettering:*



*Minimum: 0.20in/ 5mm*  
*Maximum: 0.59in/ 15mm*

## Simpson

A B C D E F G H I J K L M  
N O P Q R S T U V W X Y Z  
a b c d e f g h i j k l m  
n o p q r s t u v w x y z

*Recommended Font Heights for Satin Lettering:*  
*Minimum: 0.28in/ 7mm*  
*Maximum: 0.79in/ 20mm*

## Slice

ABCDEFGHIJKLM  
NOPQRSTUVWXYZ  
abcdefghijklm  
nopqrstuvwxyz

*Recommended Font Heights for Satin Lettering:*

*Minimum: 0.51in/ 13mm*

*Maximum: 2.56in/ 65mm*

## Sonegra

ABCDEFGHIJKLM  
NOPQRSTUVWXYZ  
abcdefghijklm  
nopqrstuvwxyz

*Recommended Font Heights for Satin Lettering:*

*Minimum: 0.59in/ 15mm*

Maximum: 1.57in/ 40mm

## Spellbinder

A B C D E F G H I J K L M  
N O P Q R S T U V W X Y Z  
a b c d e f g h i j k l m  
n o p q r s t u v w x y z

*Recommended Font Heights for Satin Lettering:*

*Minimum: 0.79in/ 20mm*

*Maximum: 1.57in/ 40mm*



## Squad

ABCDEFGHIJKLM  
NOPQRSTUVWXYZ  
ABCDEFGHIJKLM  
NOPQRSTUVWXYZ

*Recommended Font Heights for Satin Lettering:*

*Minimum: 0.28in/ 7mm*

*Maximum: 1.38in/ 35mm*

## Squire Block

ABCDEFGHIJKLM  
NOPQRSTUVWXYZ

*Recommended Font Heights for Satin Lettering:*

*Minimum: 0.28in/ 7mm*

*Maximum: 1.46in/ 37mm*

## Staged

A B C D E F G H I J K L M  
N O P Q R S T U V W X Y Z

*Recommended Font Heights for Satin Lettering:*

*Minimum: 0.47in/ 12mm*

*Maximum: 2.56in/ 65mm*

## Standard Script

A B C D E F G H I J K L M  
N O P Q R S T U V W X Y Z  
a b c d e f g h i j k l m  
n o p q r s t u v w x y z

*Recommended Font Heights for Satin Lettering:*

*Minimum: 0.31in/ 8mm*

*Maximum: 2.05in/ 52mm*

### Stargazing

a b c d e f g h i j k l m  
n o p q r s t u v w x y z

*Recommended Font Heights for Satin Lettering:*

*Minimum: 0.47in/ 12mm*

*Maximum: 0.79in/ 20mm*

### Steady Script

A B C D E F G H I J K L M  
N O P Q R S T U V W X Y Z  
a b c d e f g h i j k l m  
n o p q r s t u v w x y z

*Recommended Font Heights for Satin Lettering:*

*Minimum: 0.31in/ 8mm*

*Maximum: 2.17in/ 55mm*



## Stencil Type

**A B C D E F G H I J K L M**  
**N O P Q R S T U V W X Y Z**  
**a b c d e f g h i j k l m**  
**n o p q r s t u v w x y z**

*Recommended Font Heights for Satin Lettering:*

*Minimum: 0.59in/ 15mm*

*Maximum: 0.79in/ 20mm*

## Strokes

**A B C D E F G H I J K L M**  
**N O P Q R S T U V W X Y Z**  
**a b c d e f g h i j k l m**  
**n o p q r s t u v w x y z**

*Recommended Font Heights for Satin Lettering:*

*Minimum: 0.47in/ 12mm*

*Maximum: 1.26in/ 32mm*

### Stumps

ABCDEFGHIJKLM  
NOPQRSTUVWXYZ

*Recommended Font Heights for Satin Lettering:*

*Minimum: 0.39in/ 10mm*

*Maximum: 0.67in/ 17mm*

### Sugar

ABCDEFGHIJKLM  
NOPQRSTUVWXYZ  
abcdefghijklm  
nopqrstuvwxyz

*Recommended Font Heights for Satin Lettering:*

*Minimum: 0.39in/ 10mm*

*Maximum: 0.59in/ 15mm*

### Swizzle

ABCDEFGHIJKLM  
NOPQRSTUVWXYZ  
abcdefghijklm  
nopqrstuvwxyz

*Recommended Font Heights for Satin Lettering:*

*Minimum: 0.51in/ 13mm*

*Maximum: 1.38in/ 35mm*



### Swizzle Appliqué (original and new)

ABCDEFGHIJKLM  
 NOPQRSTUVWXYZ  
 abcdefghijklm  
 nopqrstuvwxyz

*Recommended Font Heights for Satin Lettering:*  
 Minimum: 1.77in/ 45mm  
 Maximum: None

### Swoosh

ABCDEFGHIJKLM  
 NOPQRSTUVWXYZ  
 ABCDEFGHIJKLM  
 NOPQRSTUVWXYZ

*Recommended Font Heights for Satin Lettering:*  
 Minimum: 0.59in/ 15mm  
 Maximum: 1.77in/ 45mm



## Tagged

A B C D E F G H I J K L M  
N O P Q R S T U V W X Y Z  
a b c d e f g h i j k l m  
n o p q r s t u v w x y z

*Recommended Font Heights for Satin Lettering:*

*Minimum: 0.28in/ 7mm*

*Maximum: 1.38in/ 35mm*

## Takeout

A B C D E F G H I J K L M  
N O P Q R S T U V W X Y Z  
a b c d e f g h i j k l m  
n o p q r s t u v w x y z

*Recommended Font Heights for Satin Lettering:*

*Minimum: 0.24in/ 6mm*

*Maximum: 1.57in/ 40mm*

## Tickers

ABCDEFGHIJKLM  
NOPQRSTUVWXYZ  
abcdefghijklm  
nopqrstuvwxyz

*Recommended Font Heights for Satin Lettering:*

*Minimum: 0.39in/ 10mm*

*Maximum: 1.18in/ 30mm*

## Travis

ABCDEFGHIJKLM  
NOPQRSTUVWXYZ  
abcdefghijklm  
nopqrstuvwxyz

*Recommended Font Heights for Satin Lettering:*

*Minimum: 0.31in/ 8mm*

*Maximum: 0.98in/ 25mm*



### Trotter Blended

**A B C D E F G H I J K L M**  
**N O P Q R S T U V W X Y Z**

*Recommended Font Heights for Satin Lettering:*  
*Minimum: 0.39in/ 10mm*  
*Maximum: 0.79in/ 20mm*

### Valentina

*A B C D E F G H I J K L M*  
*N O P Q R S T U V W X Y Z*  
*abcdefghijklmnop*  
*nopqrstuvwxyz*

*Recommended Font Heights for Satin Lettering:*  
*Minimum: 0.28in/ 7mm*  
*Maximum: 1.57in/40mm*

### Valentine

**A B C D E F G H I J K L M**  
**N O P Q R S T U V W X Y Z**  
**abcdefghijklmnop**  
**nopqrstuvwxyz**

*Recommended Font Heights for Satin Lettering:*  
*Minimum: 0.39in/ 10mm*  
*Maximum: 0.79in/ 20mm*



### Vine

A B C D E F G H I J K L M  
 N O P Q R S T U V W X Y Z  
 a b c d e f g h i j k l m  
 n o p q r s t u v w x y z

*Recommended Font Heights for Satin Lettering:*  
 Minimum: 1.18in/ 30mm  
 Maximum: 2.36in/ 60mm

### Violetta

A B C D E F G H I J K L M  
 N O P Q R S T U V W X Y Z  
 a b c d e f g h i j k l m  
 n o p q r s t u v w x y z

*Recommended Font Heights for Satin Lettering:*  
 Minimum: 0.51in/ 13mm  
 Maximum: 1.18in/ 30mm

### Virtue

A B C D E F G H I J K L M  
 N O P Q R S T U V W X Y Z  
 abcdefghijklm  
 nopqrstuvwxyz

Recommended Font Heights for Satin Lettering:

Minimum: 0.39in/ 10mm

Maximum: 2.05in/52mm

### Vivacce

ABCDEFGHIJKLM  
 NOPQRSTUVWXYZ  
 abcdefghijklm  
 nopqrstuvwxyz

Recommended Font Heights for Satin Lettering:

Minimum: 0.28in/ 7mm

Maximum: 1.18in/ 30mm



### WaterPark

ABCDEFGHI JKLM  
 NOPQRSTUVWXYZ  
 abcdefghijklm  
 nopqrstuvwxyz

*Recommended Font Heights for Satin Lettering:*

*Minimum: 0.28in/ 7mm*

*Maximum: 1.18in/ 30mm*

### Westminster

A B C D E F G H I J K L M  
 N O P Q R S T U V W X Y Z  
 abcdefghijklm  
 nopqrstuvwxyz

*Recommended Font Heights for Satin Lettering:*

*Minimum: 1.57in/ 40mm*

*Maximum: 2.76in/ 70mm*



## Westway

A B C D E F G H I J K L M  
N O P Q R S T U V W X Y Z

*Recommended Font Heights for Satin Lettering:*

*Minimum: 0.59in/ 15mm*

*Maximum: 0.79in/ 20mm*

## Whimsy

A B C D E F G H I J K L M  
N O P Q R S T U V W X Y Z

*Recommended Font Heights for Satin Lettering:*

*Minimum: 0.39in/ 10mm*

*Maximum: 1.57in/ 40mm*

## Whistle

A B C D E F G H I J K L M  
N O P Q R S T U V W X Y Z  
a b c d e f g h i j k l m  
n o p q r s t u v w x y z

*Recommended Font Heights for Satin Lettering:*

Minimum: 0.35in/ 9mm  
Maximum: 1.57in/ 40mm

### Wiggle

A B C D E F G H I J K L M  
N O P Q R S T U V W X Y Z  
a b c d e f g h i j k l m  
n o p q r s t u v w x y z

Recommended Font Heights for Satin Lettering:  
Minimum: 0.39in/ 10mm  
Maximum: 1.38in/ 35mm

### Willie Blended

A B C D E F G H I J K L M  
N O P Q R S T U V W X Y Z

Recommended Font Heights for Satin Lettering:  
Minimum: 0.39in/ 10mm  
Maximum: 0.79in/ 20mm



## Wishes

A B C D E F G H I J K L M  
N O P Q R S T U V W X Y Z  
a b c d e f g h i j k l m  
n o p q r s t u v w x y z

*Recommended Font Heights for Satin Lettering:*

*Minimum: 0.67in/ 17mm*

*Maximum: 1.97in/ 50mm*

## Wishes Appliqué (original and new)

A B C D E F G H I J K L M  
N O P Q R S T U V W X Y Z  
a b c d e f g h i j k l m  
n o p q r s t u v w x y z

*Recommended Font Heights for Satin Lettering:*

*Minimum: 2.80in/ 70mm*

*Maximum: None*



### Wrap It Up

A B C D E F G H I J K L M  
N O P Q R S T U V W X Y Z  
a b c d e f g h i j k l m  
n o p q r s t u v w x y z

*Recommended Font Heights for Satin Lettering:*

*Minimum: .50/ 13mm*

*Maximum: None*

*Appliqué Fonts with adjustable properties*

### All Star Appliqué

A B C D E F G H I J K L M  
N O P Q R S T U V W X Y Z

*Recommended Font Heights for Satin Lettering:*

*Minimum: 2.0in/ 50mm*

### Anna Appliqué

A B C D E F G H I J K L M  
N O P Q R S T U V W X Y Z

Recommended Font Heights for Satin Lettering:  
Minimum: 3.0in/ 76mm

### Blocked Appliqué

A B C D E F G H I J K L M  
N O P Q R S T U V W X Y Z

Recommended Font Heights for Satin Lettering:  
Minimum: 2.50in/ 63mm

### Helium Appliqué

A B C D E F G H I J K L M  
N O P Q R S T U V W X Y Z

Recommended Font Heights for Satin Lettering:  
Minimum: 3.0in/ 76mm

### Marley Appliqué

A B C D E F G H I J K L M  
N O P Q R S T U V W X Y Z

Recommended Font Heights for Satin Lettering:  
Minimum: 2.0in/ 50mm



### Oopsy Appliqué

A B C D E F G H I J K L M  
N O P Q R S T U V W X Y Z  
a b c d e f g h i j k l m  
n o p q r s t u v w x y z

*Recommended Font Heights for Satin Lettering:*

*Minimum: 2.0in/ 50mm*

### Penne Appliqué

A B C D E F G H I J K L M  
N O P Q R S T U V W X Y Z

*Recommended Font Heights for Satin Lettering:*

*Minimum: 2.50in/ 63mm*



### Printery Appliqué

A B C D E F G H I J K L M  
N O P Q R S T U V W X Y Z  
a b c d e f g h i j k l m  
n o p q r s t u v w x y z

*Recommended Font Heights for Satin Lettering:*

*Minimum: 3.0in/ 76mm*

### Snappy Appliqué

A B C D E F G H I J K L M  
N O P Q R S T U V W X Y Z

*Recommended Font Heights for Satin Lettering:*

*Minimum: 2.0in/ 50mm*

### Tutor Appliqué

A B C D E F G H I J K L M  
N O P Q R S T U V W X Y Z  
a b c d e f g h i j k l m  
n o p q r s t u v w x y z

*Recommended Font Heights for Satin Lettering:*

*Minimum: 2.0in/ 50mm*