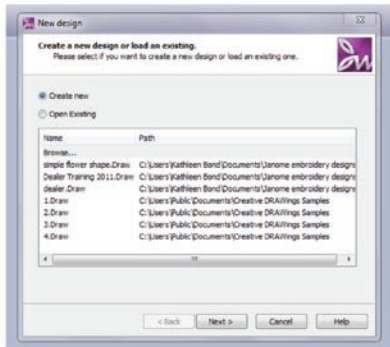


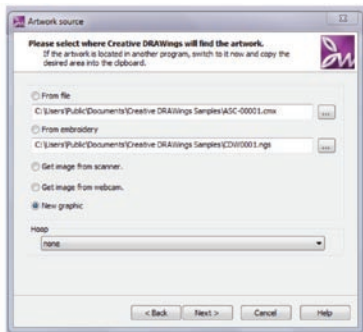
Re-sequencing Lesson

In this lesson we are going to get familiar with the sequencing capabilities of Creative DRAWings and see how this will improve our ability to create professional level embroidery projects.

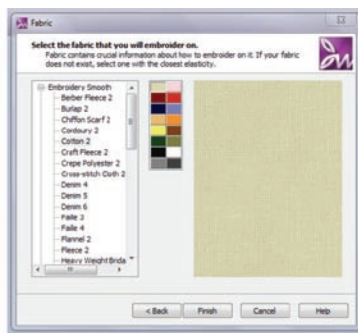
1. Let's begin by opening up Creative DRAWings.
2. Choose "Create New" > Next



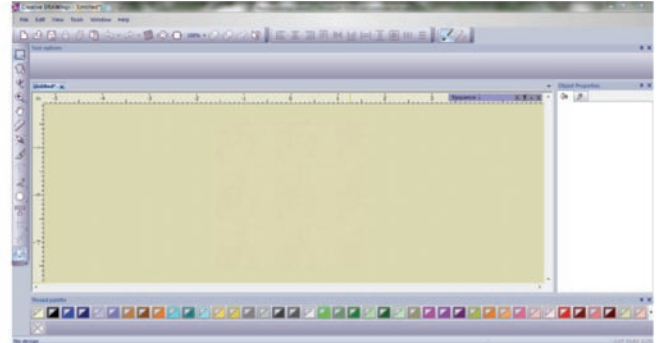
3. Choose "New Graphic" > Hoop – None > Next




4. Choose "Cotton 2" > Finish

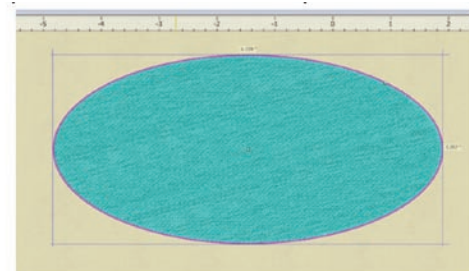




5. Your screen should look like this:



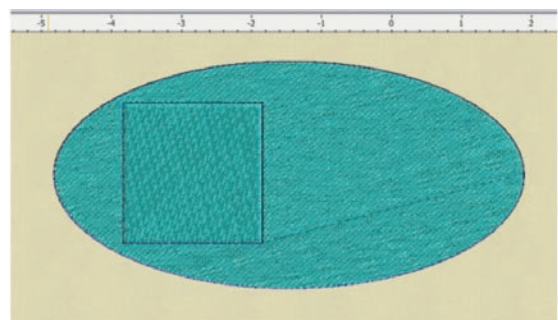
6. We need to add some objects to our work space so we can start working with them, so let's choose the Create Shape tool . When you click and hold on that icon, a pop up will appear and you can choose any of the shapes shown by passing your cursor over the shape and releasing the "click." Choose the ellipse shape.

7. Move the cursor onto the work screen. Click and drag an oval from upper left to lower right till you have an ellipse that looks similar to the picture.

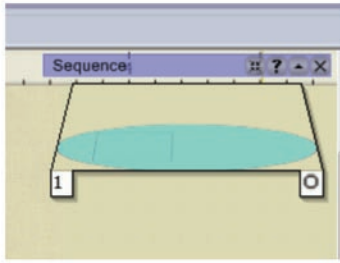


8. Now we will add a few more shapes to our work space by going back to the Create Shape tool  and long clicking. Choose the Rectangle shape. 


9. Click and drag a square type shape inside the oval on the left side as shown.



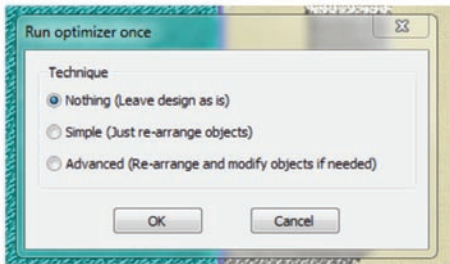
10. Notice on the right side of your work screen there is a panel with an object tray and a title bar named Sequence. If yours is not visible, go to View > Sequence Manager. The Sequence Manager will show one tray with both objects combined.



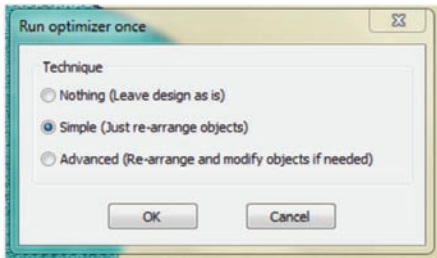
NOTE: When you first open Creative DRAWings, the Auto-sequence controls are automatically enabled, meaning that the software will choose which parts of the design will stitch out in which order.

11. To see what order has been selected by the program, we need to click on the Auto-sequence control. 

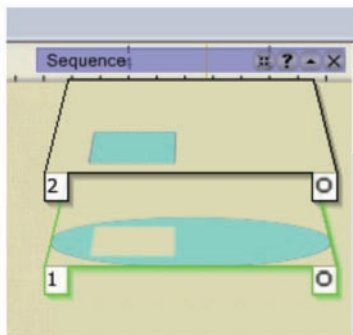
12. A pop up appears giving you three options:



If we choose "Nothing" – the design will remain as is.



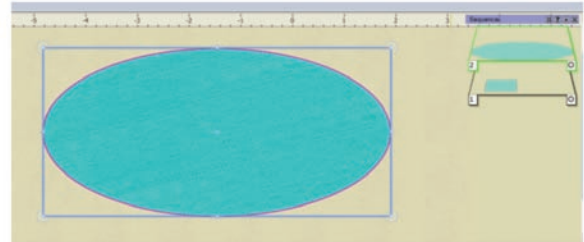
Let's choose "Simple" > OK and note how the Sequence Manager changes. Don't worry about how the square shape is cut out of the oval. We'll learn about that in another lesson.



13. Click on the object tray with the square. Notice how the square is now selected in your work screen and there is a green border around the corresponding tray. Now do

the same for the oval and notice how the selections change.


14. Let's say we want to rearrange the order that these objects stitch out. The bottom tray with the oval has a 1 in the lower corner meaning it will stitch out first. Put your cursor over this tray with the oval, then click and drag the tray up above the tray with the square. Release the "click" and see how the order in the Sequence Manager has changed.

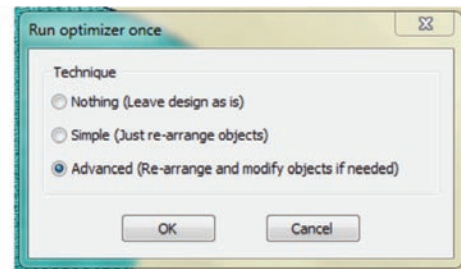


Also notice that the square is no longer visible on the work screen because if the oval is stitched after the square, the square would be covered up.

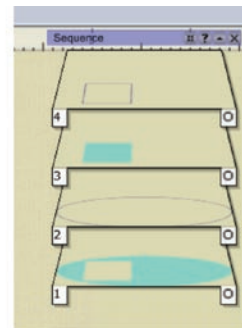
15. Move the oval tray back to its original position below the square.

16. We have seen how to use the Simple sequencing option so now let's try the Advanced.


17. Click on the Auto-sequence tool  and, in the pop up, choose Advanced this time.

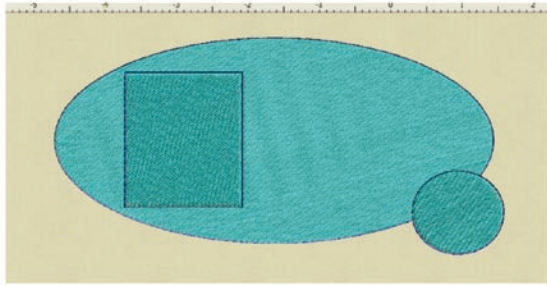


18. You will see that the Sequence Manager now has four trays instead of 2. The Advanced option has separated the fill of the shapes from their outlines.

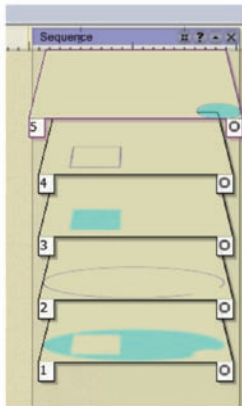


19. We are going to add another shape to experiment a bit more with the Advanced option, so click on the Create Shape tool again and choose the

ellipse/circle shape . Add a small circle that overlaps the oval on the bottom right as shown.

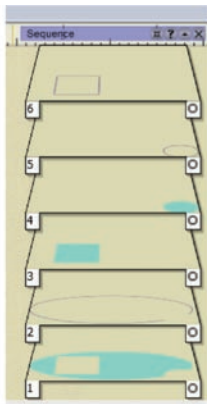


20. Note in the Sequence Manager that the new circle does not have two separate trays for its fill and outline. That is because the Advanced tool was selected when **only** the oval and the square were in the work screen.



If we want the Advanced tool to apply to the circle as well, we must go back and select Auto-sequence tool > Advanced > OK.

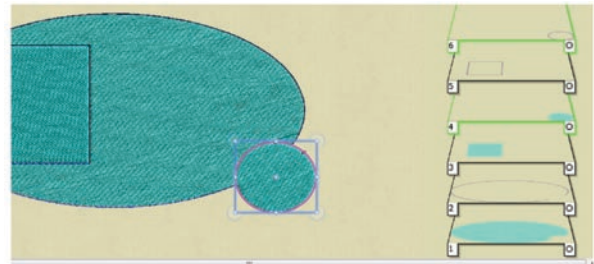
21. The Sequence Manager now has 6 trays and you can see that all three shapes are separated from their outlines – allowing you to move or copy or delete any part of the design without affecting the other.



22. Experiment by clicking and dragging trays to different positions and notice the changes that appear on your work screen as you do.

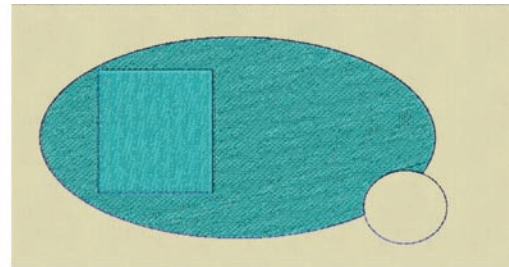
23. You can use the Sequence Manager to help you when you desire to move an object somewhere else on the work screen. Let's hold down the Ctl key and

click on both the fill and outline object trays for the small circle in our design. Note how both trays are outlined in green and that the small circle is highlighted on the work screen.



24. You can now click and drag the circle to another spot on the work screen and its outline will go with it. If you had only selected the fill part of the circle, the outline would be left behind. Even if you try to move the outline back to the circle later, it is difficult to be completely accurate.

25. If we want to just leave the small circle outline, click on the circle fill tray to select the fill only. Right click on the work screen and choose Delete.



You've just completed an exercise to familiarize yourself with the sequencing options in Creative DRAWings. Now let's review a few tips that will further help you in your creative endeavors!