

Since 1898
CONSEW®

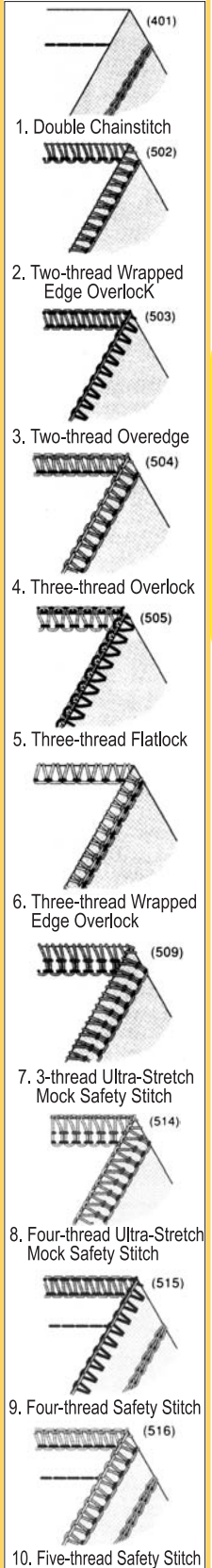
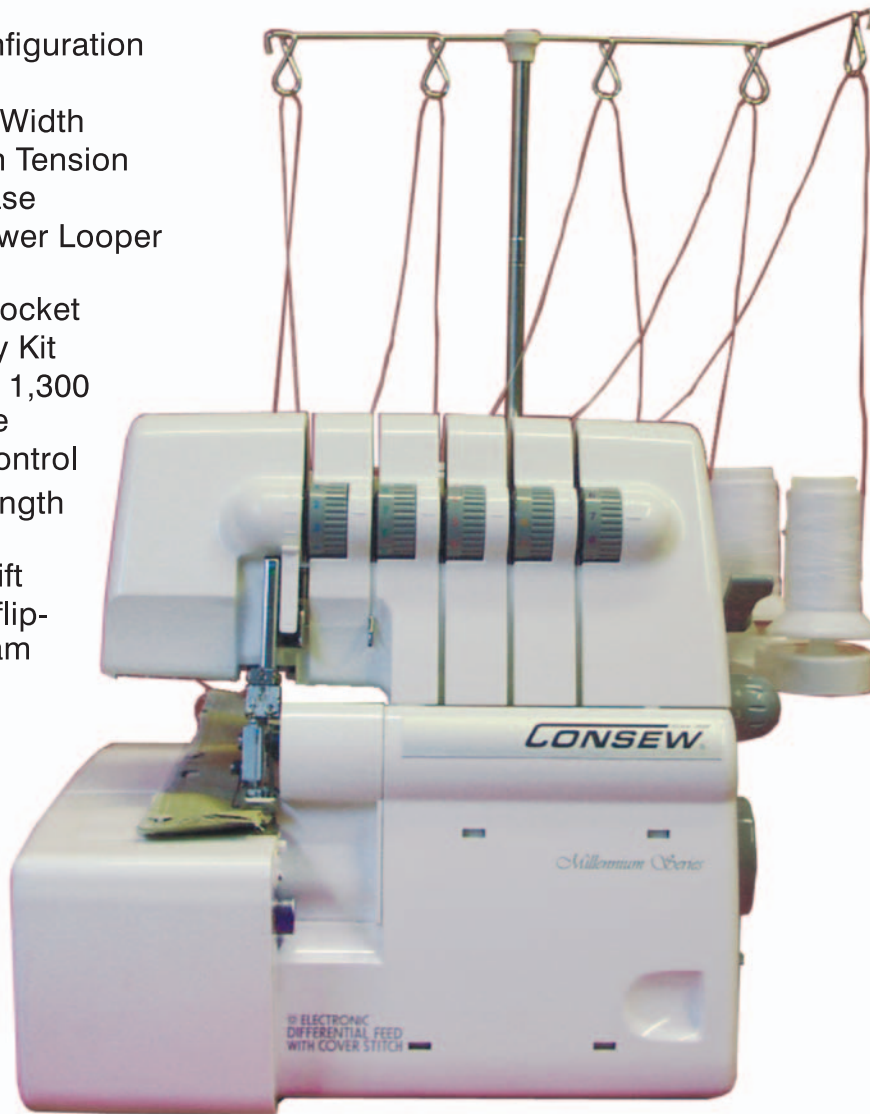
MODEL 14TU5432

PORTABLE "Coverlock"

5-thread, 4-thread, 3-thread, 2-thread Configuration

– **COVERSTITCH** – **SAFETY STITCH** –
– **OVERLOCK** – **PEARL STITCH** –

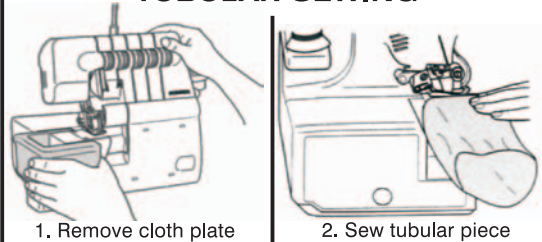
- 5-4-3-2 Thread Configuration
- Differential Feed
- Adjustable Cutting Width
- Color-Coded Lay-In Tension
- Auto Tension Release
- Cover Hem and Lower Loper Auto Threaders
- Attachable Clean Pocket
- 10-Piece Accessory Kit
- Maximum speed of 1,300 stitches per minute
- Electronic speed control
- Adjustable stitch length (2 mm to 4 mm)
- Extra presser foot lift
- Built-in light, ruler, flip-up handle and seam guide
- Soft dust cover



OVERLOCK-COVERSTITCH

FLAT BED OR CYLINDER BED

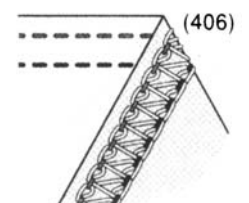
TUBULAR SEWING



If you're ready to take your sewing to a new level, then you're ready for the Consew "Coverlock".

It makes the decorative and professional touches easier than you ever thought they would be.

The Consew "Coverlock" puts every feature or capability you could want at your fingertips.



11. Cover Stitch

Model 14TU5432

APPLICATIONS

- For overedging and trimming various materials from lightweight fabrics such as chiffons, silk, suit lining, tricot, linen, cotton, general dress materials and woollens to heavyweight fabrics such as tweeds, coat cloth, jersey and denim
- Sew through denim as well as through the sheerest of fabrics without puckering
- Suitable for overedging such products as jackets, sweaters, dress and sports shirts, overalls, uniforms, jeans, work pants, dresses, jump suits, slippers, negligees, pajamas, bathing suits, trousers and coats
- Suitable for general overedging, cross seaming, plain seaming, pintucking and braiding. You can ornament with pintuck or braid stitching and ornamental overlocking.
- Perfect for sample rooms, alteration rooms, tailor's shops, drapery shops, dry cleaners, department stores, dress makers and the home

FEATURES

- Differential Feed
- Easy color coded threading
- Counterbalanced mechanism. Precision feet for smooth, vibration-free operation
- Telescoping thread mast (convenient extension spool holders)
- Adjustable stitch length dial
- High-rise looper mechanism with presser foot lift up to 5/32" (4.5 mm)
- Adjustable cutting width. Heavy duty top tungsten-carbide steel knife and lower carbon steel knife ensures sharp, clean cutting
- Easy thread tension control for any thickness of materials and any threads
- Needle guard prevents needle from bending or breaking when stitching heavyweight materials such as denim etc.
- Auto Tension Release
- Attachable Clean Pocket
- Equipped with built-in motor, electronic foot-operated speed control
- Built-in glare-free sew light, ruler, handle and seam guide
- Removable cloth plate for cylinder operations

SPECIFICATIONS

Speed, Max. (S.P.M.) *	1300 *
Clearance Under Foot	4.5 mm
Stitch Length, Max.	4 mm
Overedging Width	3 - 7.7 mm
Coverstitch Width	4 mm
Stitch Type	(see chart on front)
Shipping Weight	21 lbs.

* Speed is dependent on operation, material and thread.

Specifications subject to change without notice.



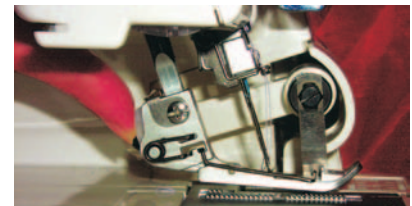
Stitch length dial



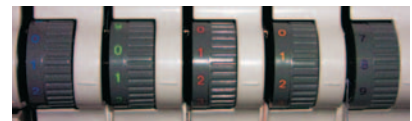
Differential feed



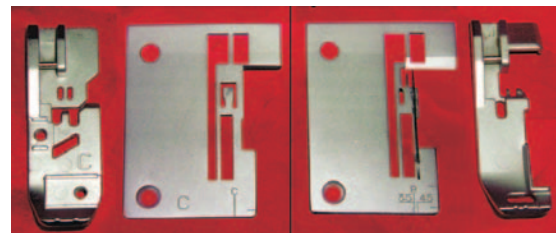
Sewing foot (raise & lower) lever



Snap-on presser foot



Separate thread tension for all 5 threads



Complete with 2 sets of presser feet & plates for coverstitch, safety stitch & overlock



Electronic speed control for stitch by stitch operation.



Built-in lamp lights sewing area



Convenient storage drawer

OVERLOCK-COVERSTITCH