

# Fabric Cutting Basics

What kind of cutting would you like to do?



Example:  
For **appliqués**, etc.

- I don't want the edges to fray.
- I want to use fabric that easily frays.
- I want to use fabric with a heavy nap.

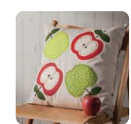


Example:  
For **quilting**, etc.

- I want to cut fabric with a seam allowance.
- I want frayed edges.
- I want to use fabric that will not fray when attached to a high-tack adhesive mat.

## Select the sheet appropriate for the use. \* When cutting fabric, the iron-on fabric appliqué contact sheet or high tack adhesive support sheet must be used.

For appliqués, etc.



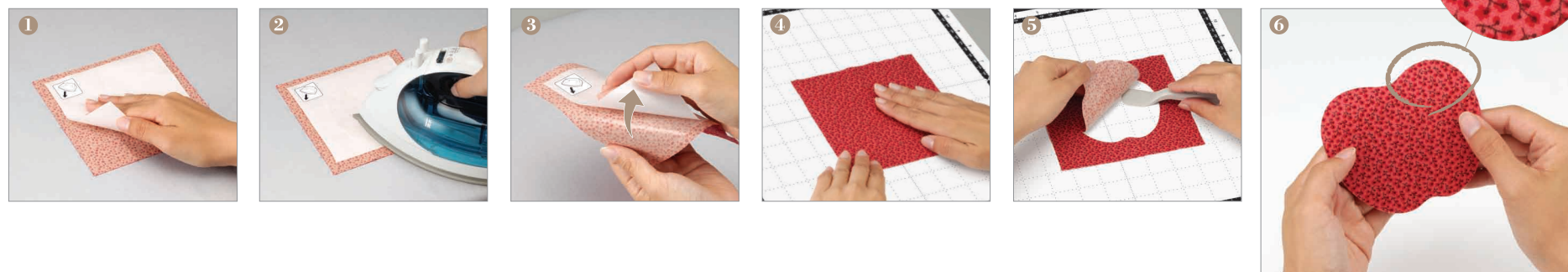
**CASTBL1**  
Iron-On Fabric Appliqué Contact Sheet

This sheet is attached directly to the fabric so that the fabric can easily be attached to the mat. Do not use this sheet with fabric that cannot be ironed. Double-sided adhesive is suitable for appliqué.



◆ Attach fabric backed with an iron-on fabric appliqué contact sheet to the standard mat before cutting.

\* Iron out all wrinkles from the fabric before using this sheet.



For quilting, etc.



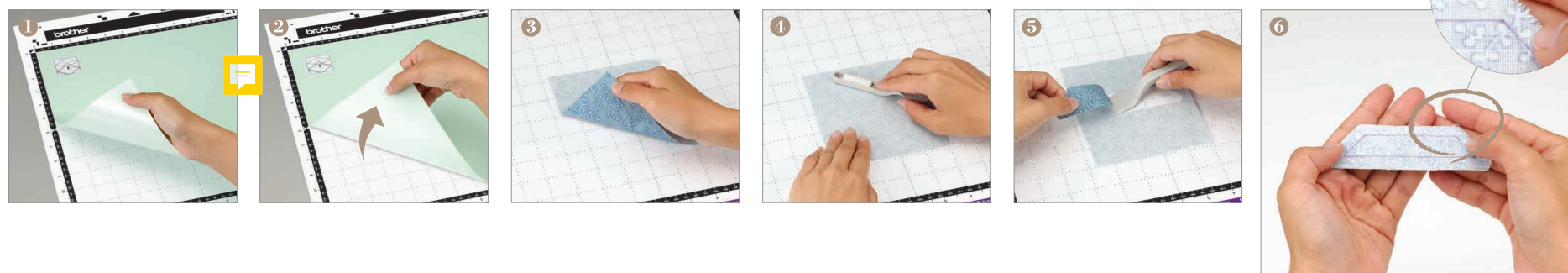
**CASTBL2**  
High Tack Adhesive Support Sheet

This sheet is attached to the standard mat in order to increase the strength of the adhesive.



◆ Attach a high tack adhesive fabric support sheet to the standard mat, and then place the fabric on top before cutting.

\* If the fabric seems like its edges would be badly frayed when it is peeled off the mat, specify a larger seam allowance.



## Before use

◆ **Test attaching the material.**

If the edges of fabric peeled off a mat with the high tack adhesive fabric support sheet attached are in an unexpected condition, use a strong fusible web such as the Brother Iron-On Fabric Appliqué Contact Sheet.



◆ **Check the following.**

Mat

Is there still adhesive on the mat enough to hold material or the fabric support sheet?

Blade Type and Settings

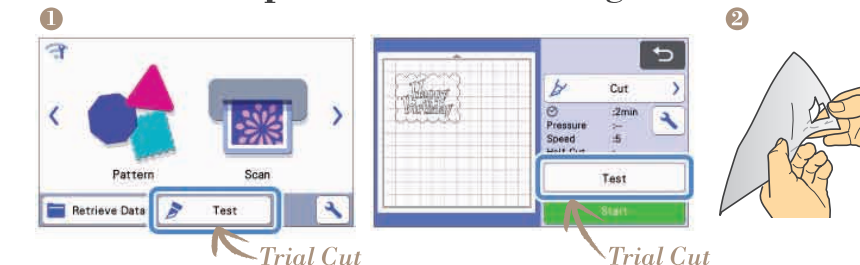
Is the blade type and settings correct for the fabric thickness?

Fabric	Cutting blade	Blade scale setting & Cut pressure setting
Thin cotton or flannel fabric (without backing or contact sheet), etc.	Thin fabric Auto Blade	Auto setting*
Thin cotton or flannel fabric (with backing or contact sheet)	Auto Blade	Auto setting*

\*Always perform a test/trial cut to confirm a successful cut.

The blade extension and cutting pressure must be adjusted manually with the Standard Cut Blade Holder (turquoise) and Deep Cut Blade Holder (purple).

◆ **Be sure to perform trial cutting.**





# Troubleshooting

**1** When the fabric was attached directly to the mat, it wasn't securely attached, and the fabric became twisted.

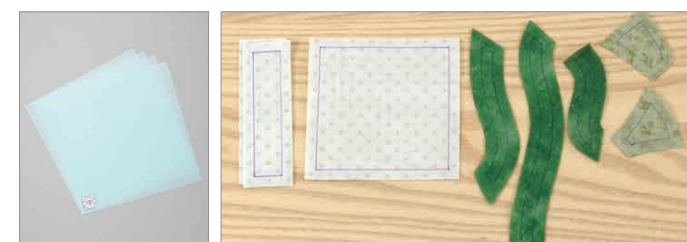


Depending on the purpose and fabric to be used, cut the fabric according to either method **A** or **B**.

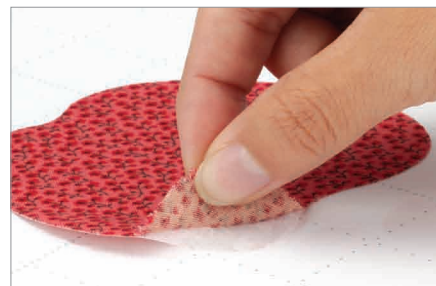
**A** Attach the **iron-on fabric appliqué contact sheet** to the back of the fabric, and then cut using **the standard mat** (without any other sheet attached).



**B** Attach a **high tack adhesive fabric support sheet** to the **standard mat**.



**2** While being peeled off the mat, the fabric tears, or the **iron-on fabric appliqué contact sheet** peels off the fabric.



Instead of pulling on the fabric, use the spatula to carefully peel off the fabric in the direction of the pattern.

### Basic patterns

1. Insert the spatula at one place in the pattern to lift off the edge.

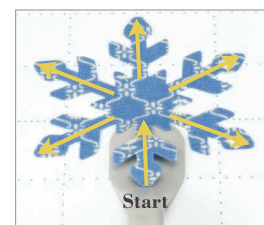


2. Insert the spatula at the remaining places.



### Patterns that expand radially

Insert the spatula at one place and peel off the fabric toward the center, and then, from the center to the outside, peel off the remaining parts one by one.

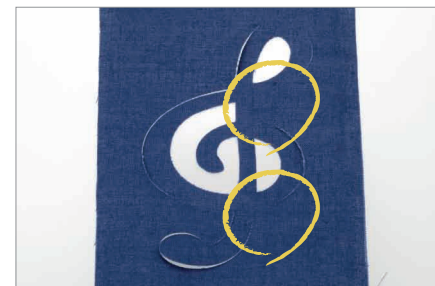


### Character patterns

Peel off the fabric by slightly moving the spatula along the characters.



**3** Part of the fabric is not cut.



In order to cut cleanly, a mat with an adequate adhesive strength as well as appropriate blade scale and cut pressure settings are required. Replace the standard mat with a new one, and adjust the settings.

### [Reference values]

Since these values differ depending on the machine, make the necessary adjustments.

Fabric	Cutting blade	Blade scale setting & Cut pressure setting
Thin cotton or flannel fabric (without backing or contact sheet), etc.	Thin fabric Auto Blade	Auto setting*
Thin cotton or flannel fabric (with backing or contact sheet)	Auto Blade	Auto setting*

\*Always perform a test/trial cut to confirm a successful cut.

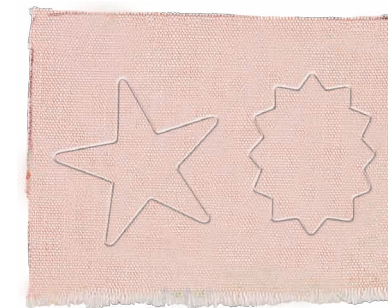
The blade extension and cutting pressure must be adjusted manually with the Standard Cut Blade Holder (turquoise) and Deep Cut Blade Holder (purple).



The **iron-on fabric appliqué contact sheet** may not have been securely attached to the back of the fabric. Iron it again so it is securely attached.

If fabric scraps or lint accumulates inside the blade holder, the machine may not operate correctly. Periodically clean the blade holder.

**4** The blade does not penetrate the material.



Adjust the Cut Pressure setting and do a test cut.

**5** Attach the **iron-on fabric appliqué contact sheet** to the fabric, and then immediately cut. When the sheet becomes dry, its adhesive strength decreases, causing it to peel off easily.



**6** There seems to be an excess of the **high tack adhesive support sheet**.



Do not remove the sheet excess. If an uneven surface is created, the fabric may not be cut cleanly.

## Tips

Fabric requires more pressure to cut through all those threads. Perform a series of Test Cuts, starting at auto setting and gradually bringing the pressure higher and higher until you find the perfect setting for your fabric.