

NORMA JEAN

SEWING MACHINE CABINET

OWNER'S MANUAL

Assembly Instructions

Model Numbers:

350	Oak
351	White
352	Cherry
353	Black



Piece of cardboard and styrofoam need to be saved for Step 14!

IMPORTANT: Please read these instructions before assembling!

READ THIS PAGE FIRST

{WARNING TRIANGLE} WARNING:
CHOKING HAZARD – Small parts. Not for children under 3 years.
Please retain this information for future reference.

ARROW WARRANTY

Thank you for your purchase of an Arrow Sewing Cabinet!

Thank you for your purchase! Our products have a **three-year warranty from the date of shipment from our facility that covers manufacturer defects** plus a **15 day warranty for any shipping damages**.

Register online at www.arrowcabinets.com/warranty
--get a bonus 1 year of warranty!

The warranty covers parts and freight for the first year and parts only for any claims after the first year. Freight after the first year of ownership will be the responsibility of the customer.

The warranty covers all manufacturer defects but does not cover damage caused by abuse, misuse, alteration, poor assembly, accident or neglect of the product. The warranty does not cover damage as a result of moving the cabinet fully loaded or damage caused by moving the cabinet with locked casters.

Under the terms of this warranty the repair and replacement of any parts shall be at the discretion of the company or their designated representatives.

Replacement Part Shipping Policy:

All replacement parts shipping prepaid freight must **ship out at the same time**. Please help us in this endeavor by reviewing ALL parts in ALL boxes for damage before calling or e-mailing us to report damage. Warranty covers shipping cost of replacement parts 1 time only within the first year of ownership. Additional warranty parts requests will be shipped at the customer's expense.

Register online at www.arrowcabinets.com/warranty

VISIT WWW.ARROWCABINETS.COM FOR ASSEMBLY VIDEOS, PICTURES AND FREQUENTLY ASKED QUESTIONS.

FOLLOW US ON FACEBOOK AND CHECK OUT OUR COOL CONTESTS!

If you have any questions, please call or email us at:

1-800-533-7347
cs@arrowcabinets.com

Check out our website for pictures and frequently asked questions at:
www.arrowcabinets.com

Notice to Customer:

Before beginning assembly, remove all parts from the carton. Please review the illustrations below to determine that all parts are Included.

For assembly or operating assistance, or to report any missing or damaged parts, you may call or write to:

cs@arrowcabinets.com

1-800-533-7347

Arrow Cabinets

P.O. Box 307, Delavan, WI 53115

TO ORDER REPLACEMENT PARTS CALL

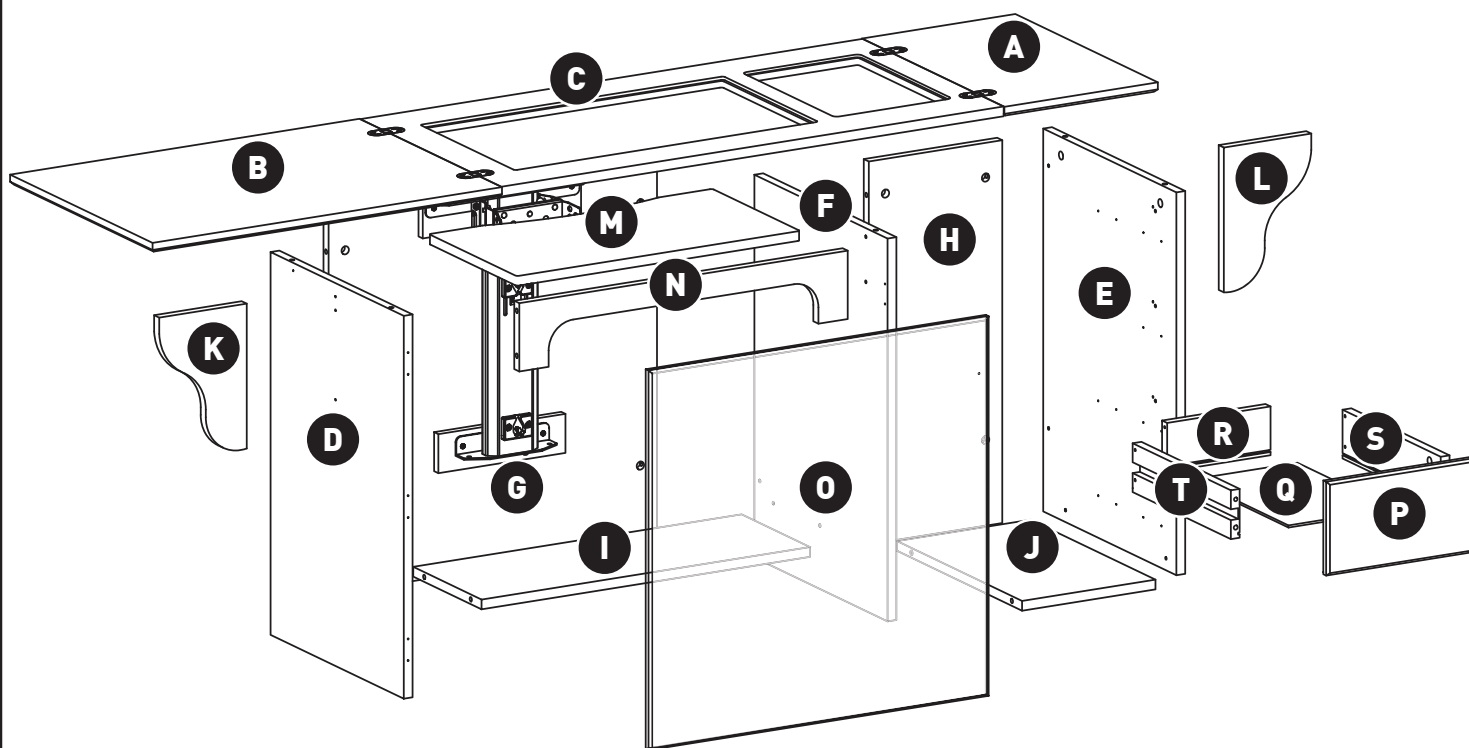
1-800-533-7347

NOTE: To assure proper handling of replacement parts please include the following information:

- **Model Number of Unit -** 350 (Oak)
351 (White)
352 (Cherry)
353 (Black)
- **Production ID Number**
- **Number of Part Required**
- **Your Name, Address, and Phone Number**

Wooden Materials

Parts are labeled with capital letters. To reference letters, turn to the Wood Parts List in the back of your manual.

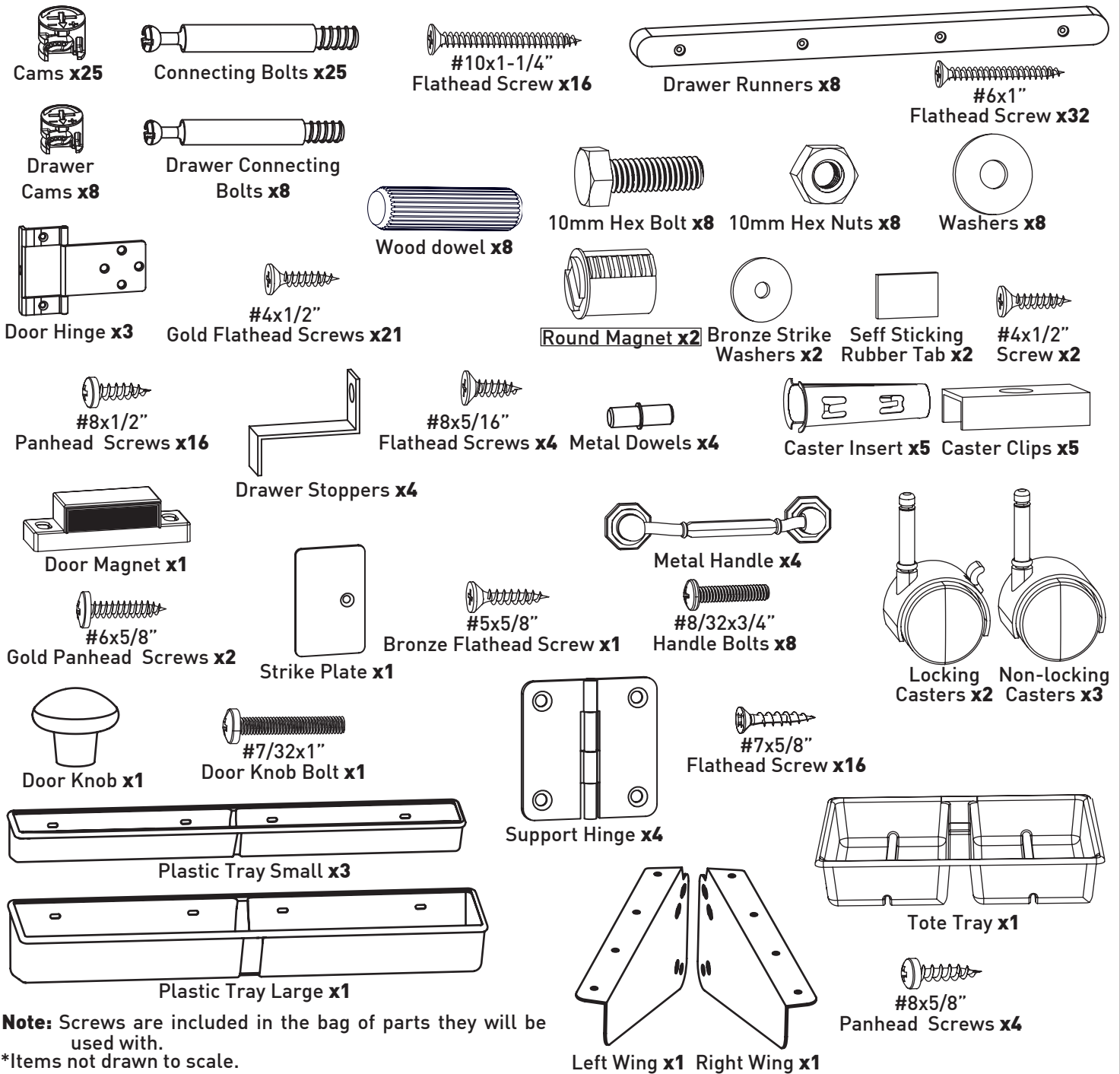


- | | | | |
|---------------------------|-----------------------------|------------------------------|--------------------------------------|
| A Right Leaf | F Partition | K Left Leaf Supports | P Drawer Front x4 |
| B Left Leaf | G Back | L Right Leaf Supports | R Drawer Back x4 |
| C Top | H Compartment Back | M Platform | S Drawer Side Right x4 |
| D Left Side Panel | I Shelf | N Front | T Drawer Side Left x4 |
| E Right Side Panel | J Compartment Bottom | O Door | Q Drawer Bottom x4 |

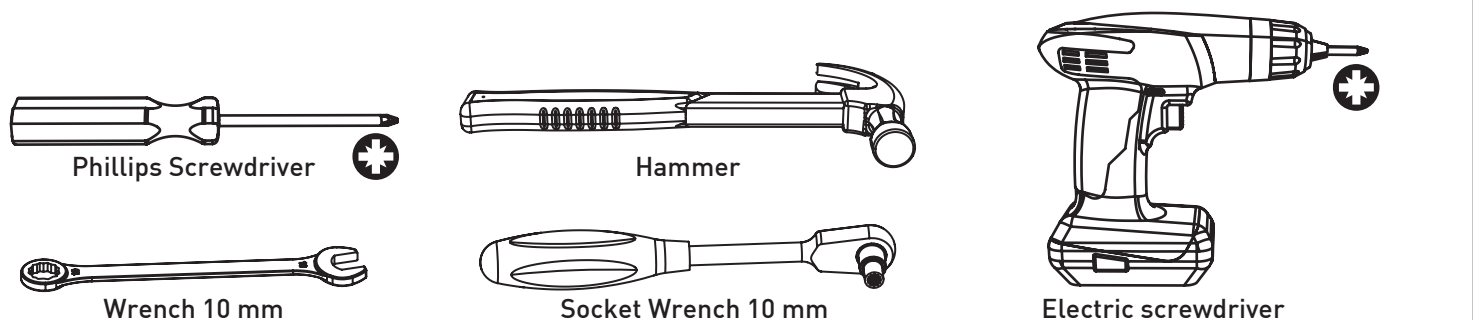
If any of these parts arrived damaged, please call us at **1-800-533-7347** and we will send a replacement part out.

For additional strength dab wood glue on tip of screws before attaching.

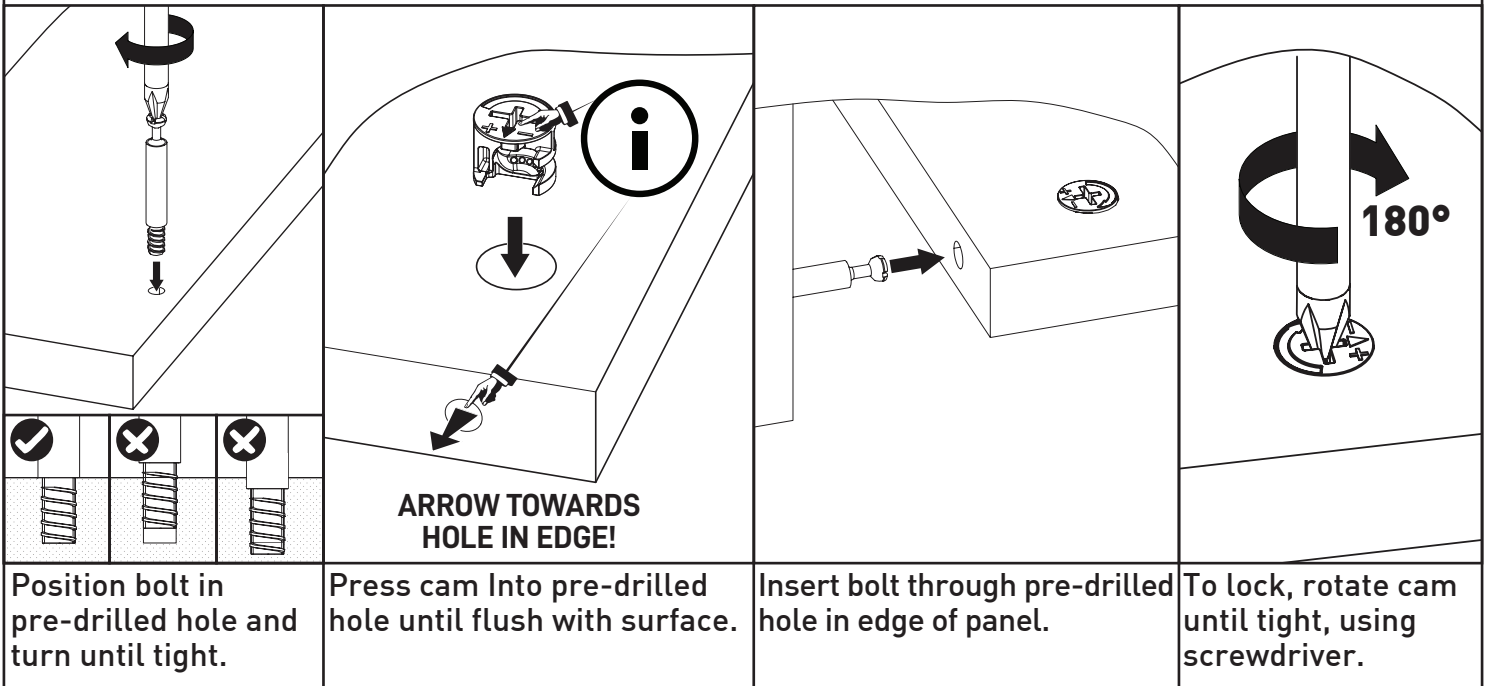
Hardware Included



Tools required



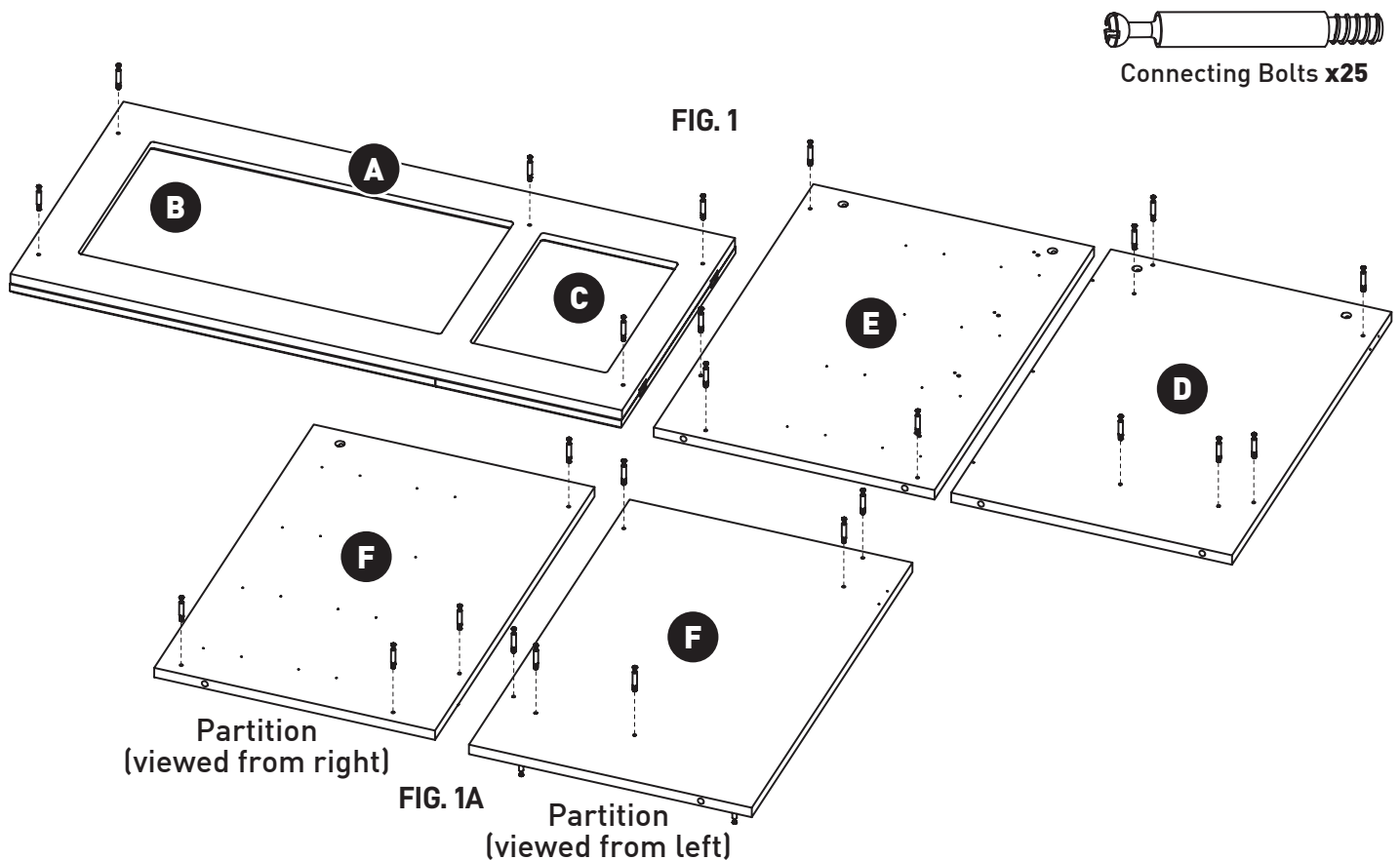
Understanding How the "ARROW-LOC" Cam Fastener Works



Cabinet Assembly

Step 1. Place Top (A, B & C), Partition (F) and Left and Right Sides (D & E) on a flat protected surface (to prevent scratching of parts) and thread

connecting bolts (25 total) into pre-drilled holes (as shown in FIG. 1). Turn Partition (F) over and thread in the remaining bolts as indicated below (FIG. 1A).

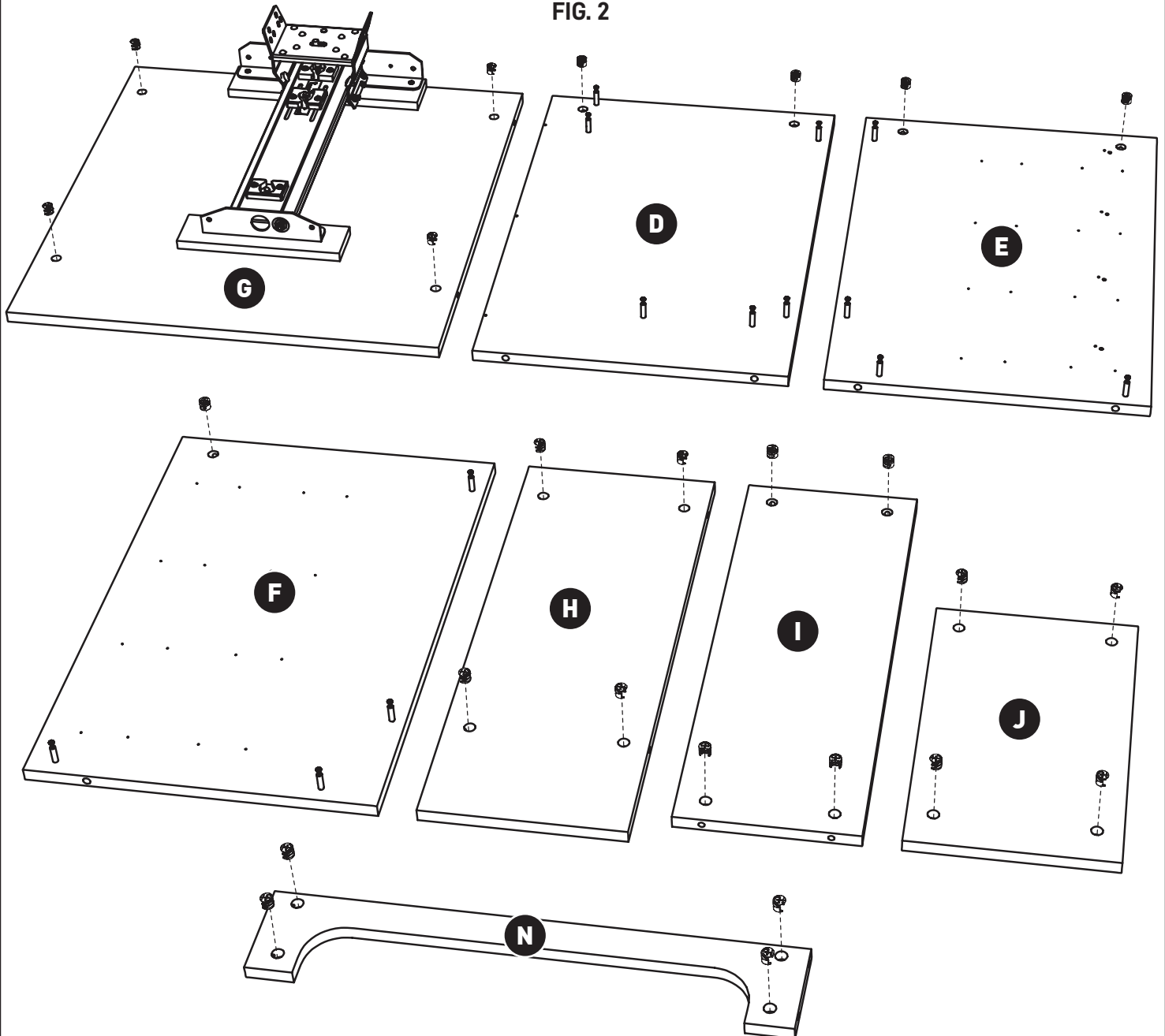


Step 2. Install Cams (25 total) Into the holes provided in the cabinet parts shown below, pushing a cam into each hole until flush with the surface. The arrow on the Cams should be turned (using a

regular screwdriver or Allen Key Provided) to face the hole in each edge where the Connecting Bolts will enter. See top of page 3 for installation of cams.



FIG. 2



Step 3. Attach the plastic brown Drawer Runners by using #6x1" Flathead Screws (x32) (as shown In FIG. 4).

DO NOT OVER TIGHTEN. If the brown plastic around the screw holes turns white, you have over tighten and the drawers won't fit!

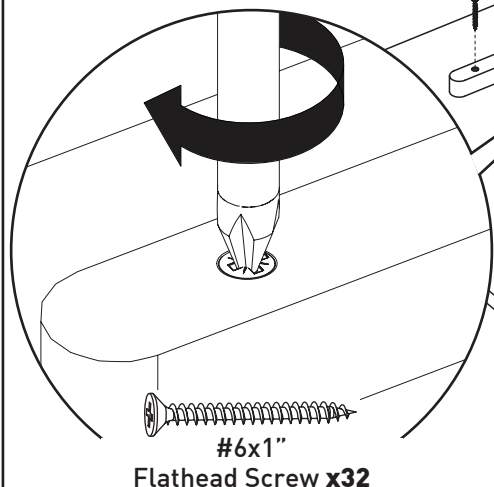
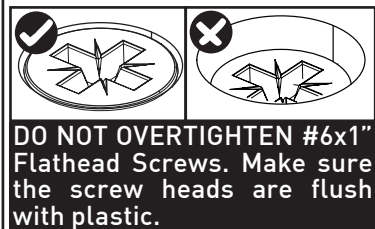
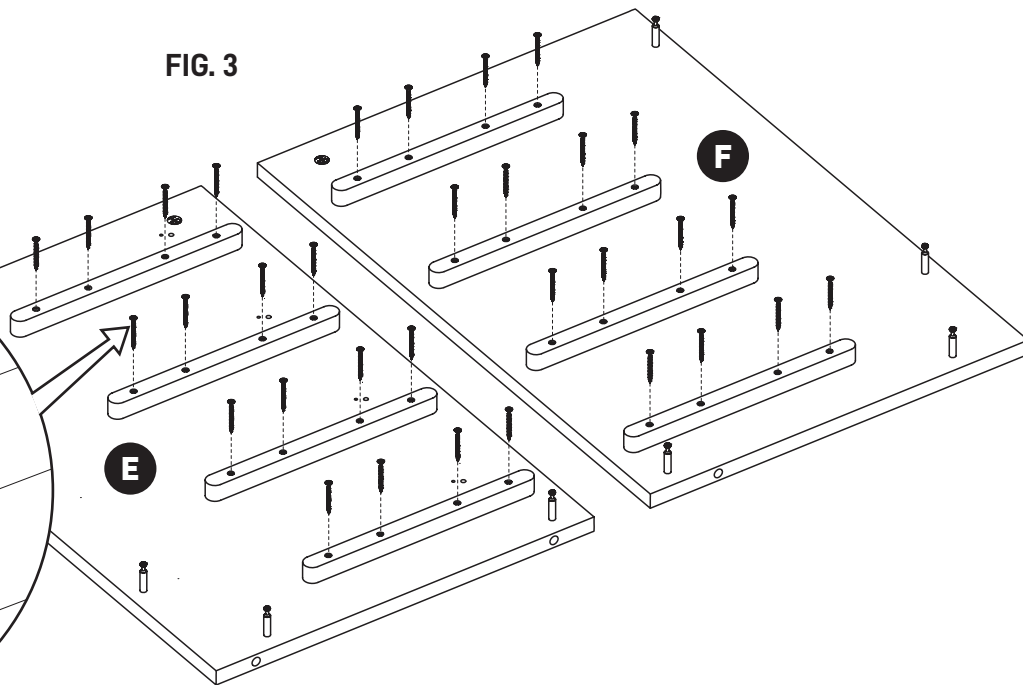


FIG. 3



Step 4. Attach the Magnet to the Partition (F) by using #6x5/8" Screws (x2). Be sure to keep the magnet Strikes (metal) facing towards the front edge of the Partition (F) (as shown In FIG. 4.).

Screw drawer stop (4) total into Right side panel (E) above drawer runners using #6x5/8" flathead screw (x4). **DO NOT** tighten the screws completely, leave 1/4" for up and down swivel of the drawer runner. Insert Metal dowel (x4) into pre-drilled hole next to drawer stops.

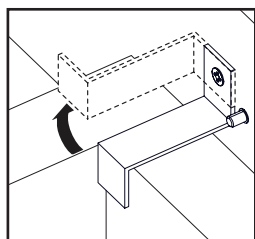
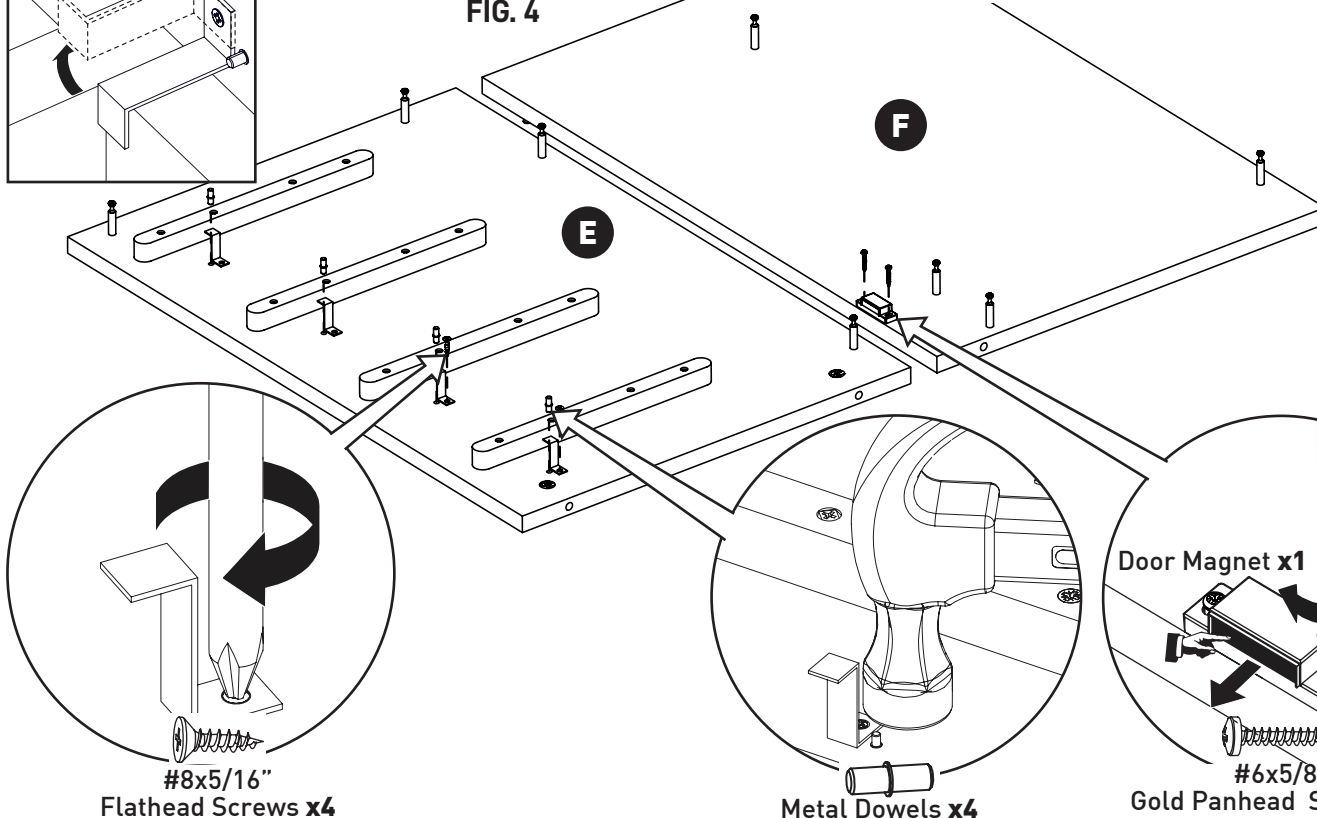


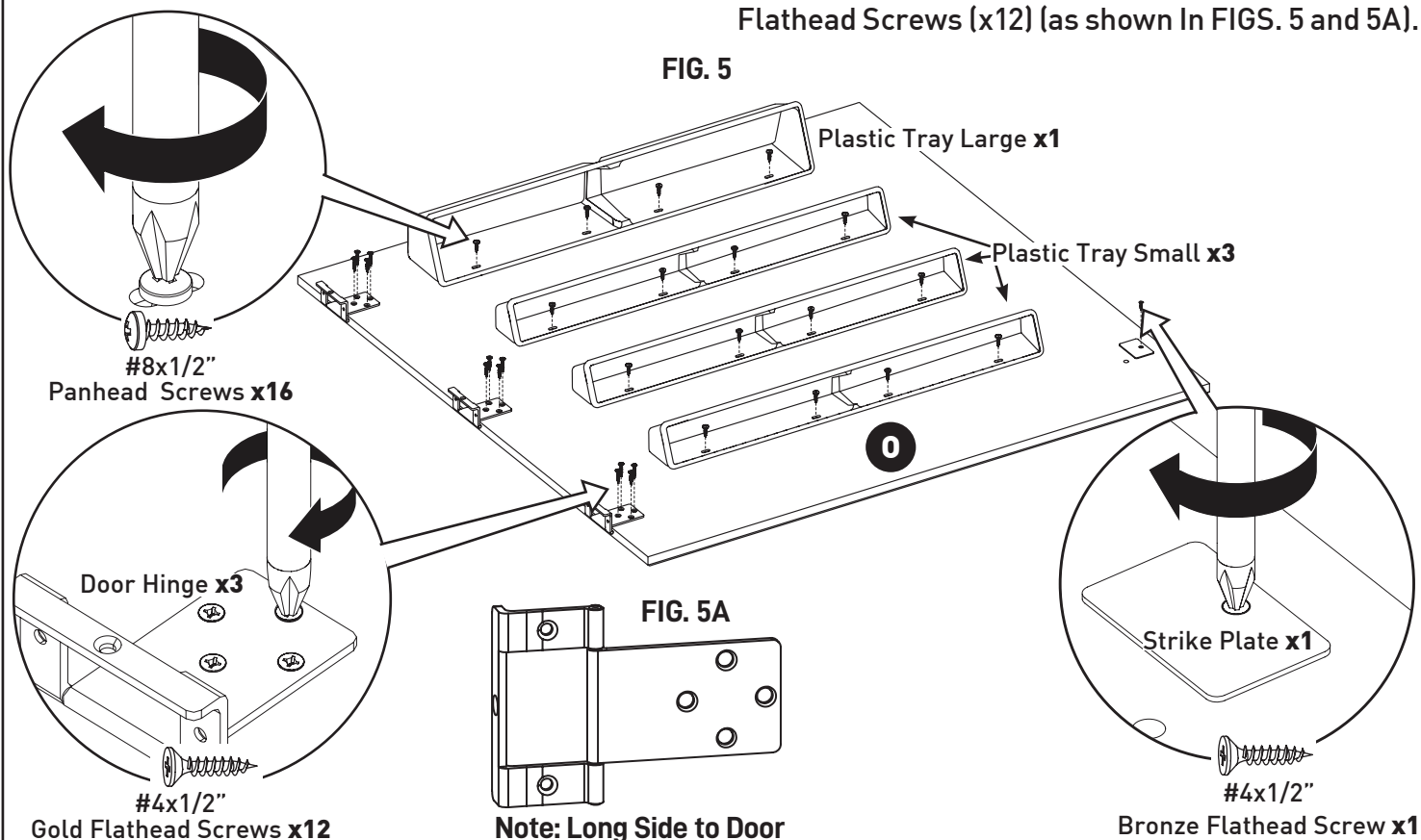
FIG. 4



Step 5. Attach the plastic Trays (x4) to the Door (0) by inserting the #8x1/2" Panhead Screws (x16) into the Door (0). The (3) smaller trays are mounted in the three top rows of predrilled holes,

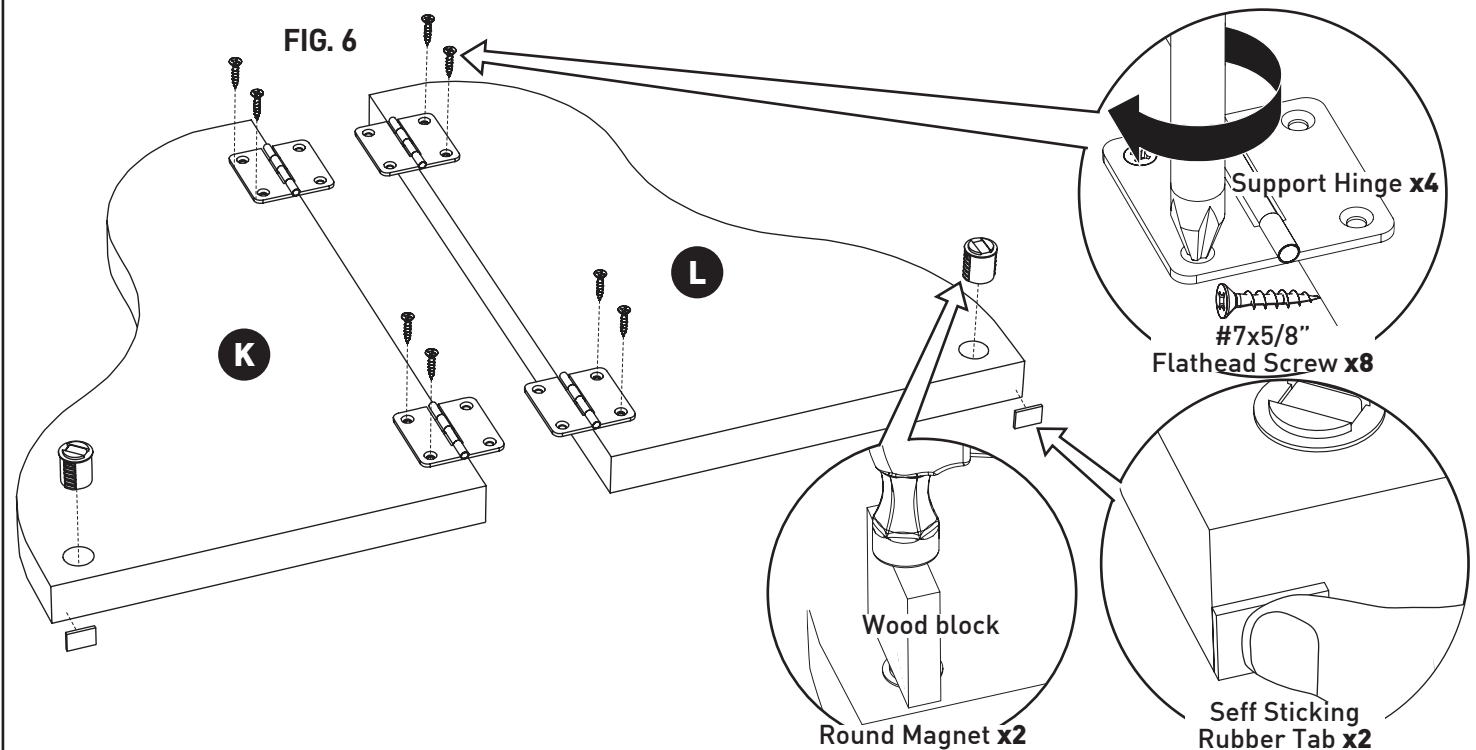
with larger tray mounted in bottom row. Attach Magnet Strike Plate with #5x5/8" Flathead Screw (x1).

Attach (3) Door hinges to Door (0) with #4x1/2" Flathead Screws (x12) (as shown In FIGS. 5 and 5A).



Step 6. Attach Support Hinges (x4) to Right and Left Supports (L & K) with #7x5/8" Flathead Screws (x8); Insert Round Magnets (x2) into holes in Leaf Supports (L & K) (as shown In FIG. 6).

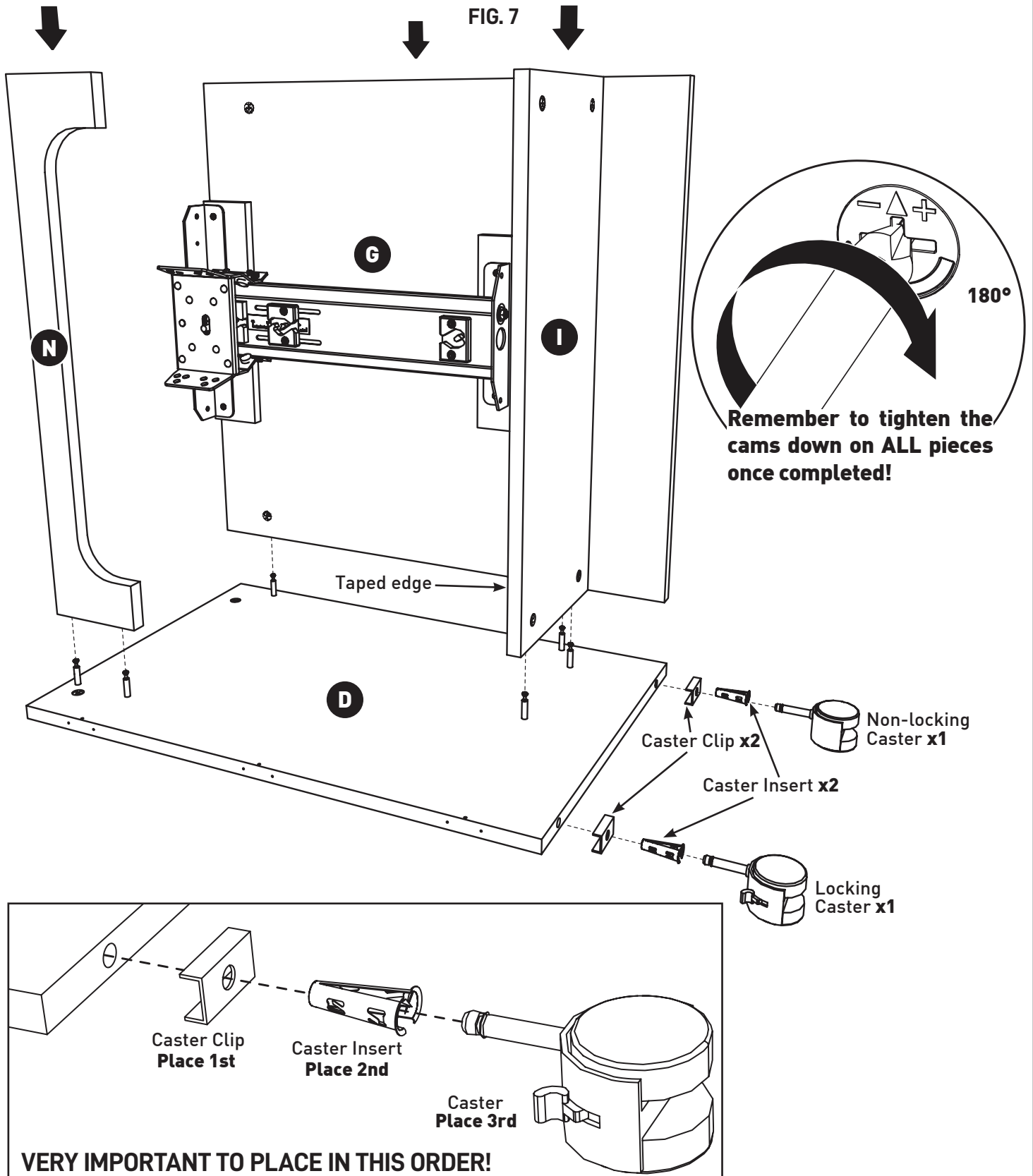
Cover the magnet with a wood block and tap hard to get magnet in the hole. Attach rubber tabs to Leaf Supports (L & K), make sure and place tab on opposite edge from round magnet!



Step 7. Place Caster Clips (x2), Inserts (x2), Locking Caster (x1), and Non-Locking Caster (x1) into Left Side (D) (as shown In FIG. 7 below). It is important to put caster clip on first and then tap insert into caster clip opening. Attach Shelf (I) first to help support the Back (G) when placed

on Left Side (D). Attach the Back (G) to Left Side (D) by guiding Back (G) onto Connecting Bolts in Left Side (D) (as shown In FIG. 7), turn Cams to the Locked Position. Attach Front (N) by guiding it onto the appropriate Bolts in the side, and turn the Cams to the Locked Position.

FIG. 7

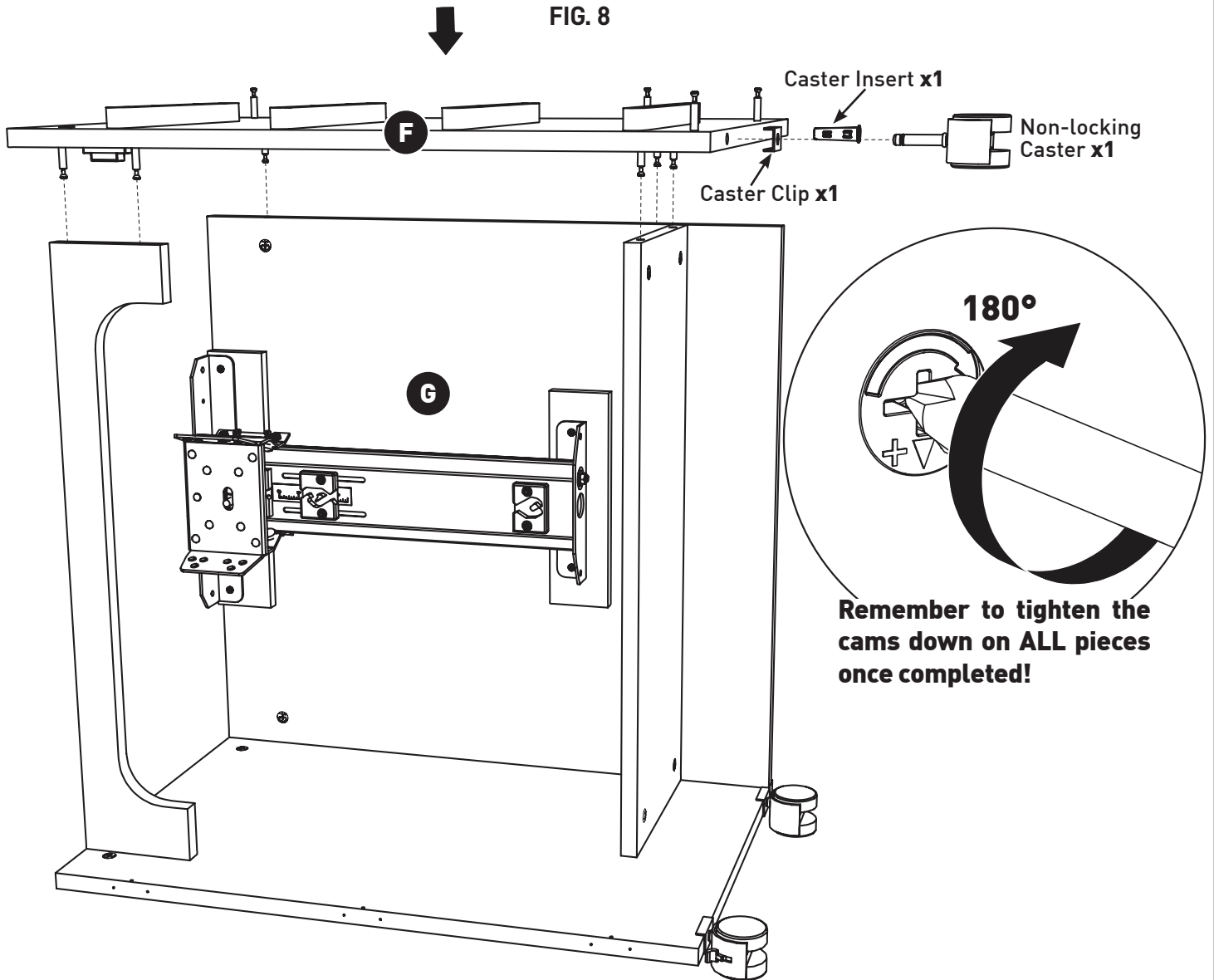


Step 8. Place or tap Caster Clip (x1), Insert (x1) and Non-Locking Caster (x1) into the Partition (F) (as shown In Fig.8. below).

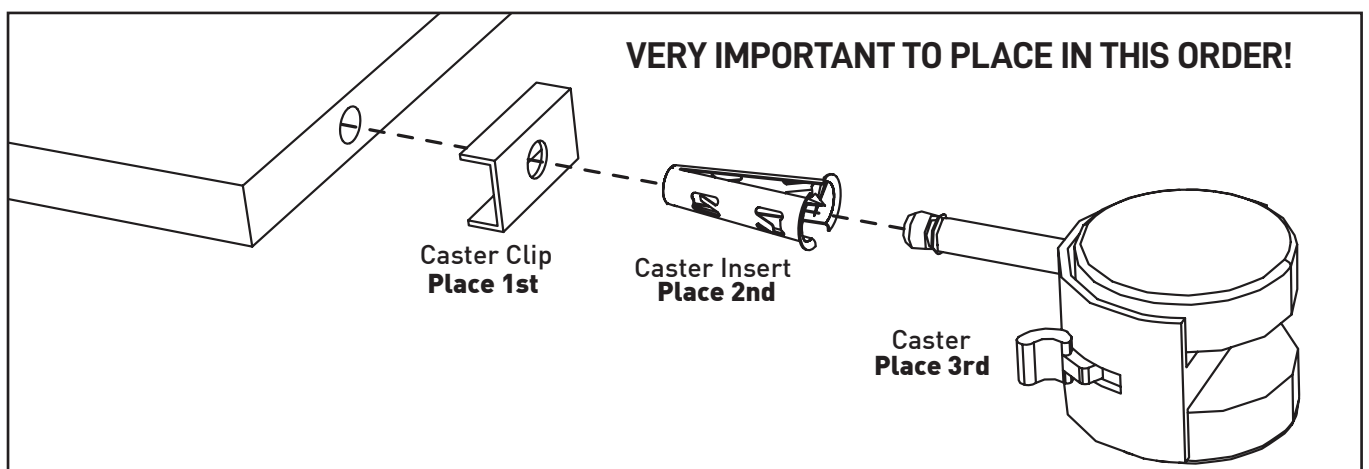
* It is VERY important to put caster clip on first and then tap caster insert into clip opening.

Align the Connecting Bolts in Partition (F) with corresponding holes in Front (N), Shelf (I) and Back (G). Now, making sure the Partition (F) is completely on the Connecting Bolts, turn Cams to Locked Position.

FIG. 8



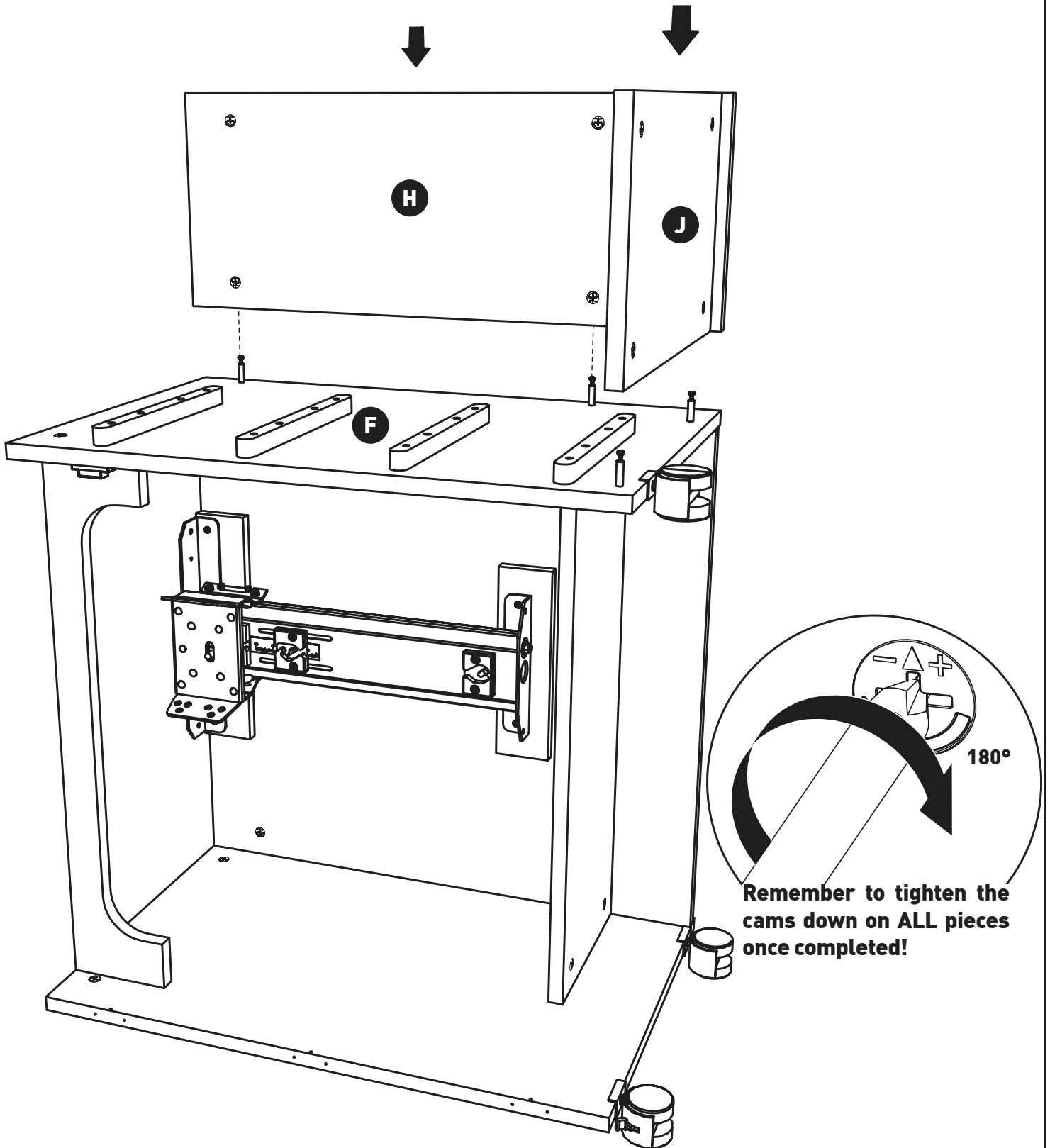
VERY IMPORTANT TO PLACE IN THIS ORDER!



Step 9. Attach Compartment Bottom (J) and Compartment Back (H) to Partition (F) by guiding each piece onto Connecting Bolts in the Partition

(F) (as shown in FIG. 9). Turn Cams to Locked Position.

FIG. 9



Step 10. Place or tap Caster Clips (x2), Inserts (x2), Locking Caster (x1), and Non-Locking Caster (x1) into Right Side (E) (as shown in FIG. 10 below). Attach Right Side (E) by Aligning the Connecting Bolts in the Right Side to the holes in the Compartment Back (H) and the Compartment Bottom (J) (as shown in FIG.10).

Turn Cams to Locked Position.

After completing Step 10, with an assistant, carefully turn the Cabinet upright onto the Casters. **DO NOT** lean the cabinet on the casters to turn over. The stress on the casters will cause them to break.

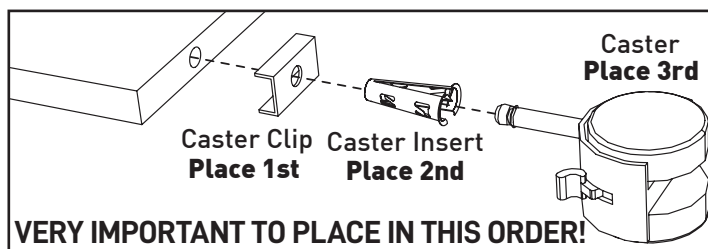
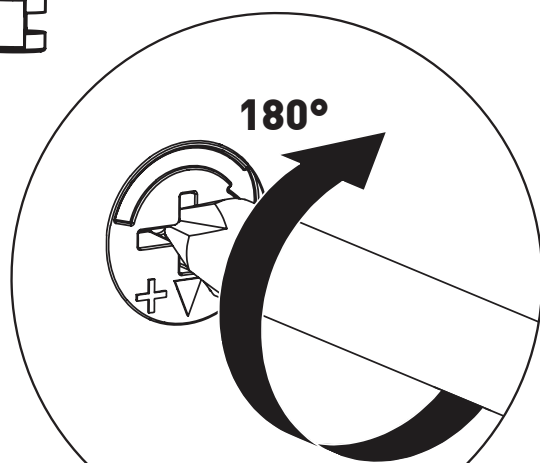
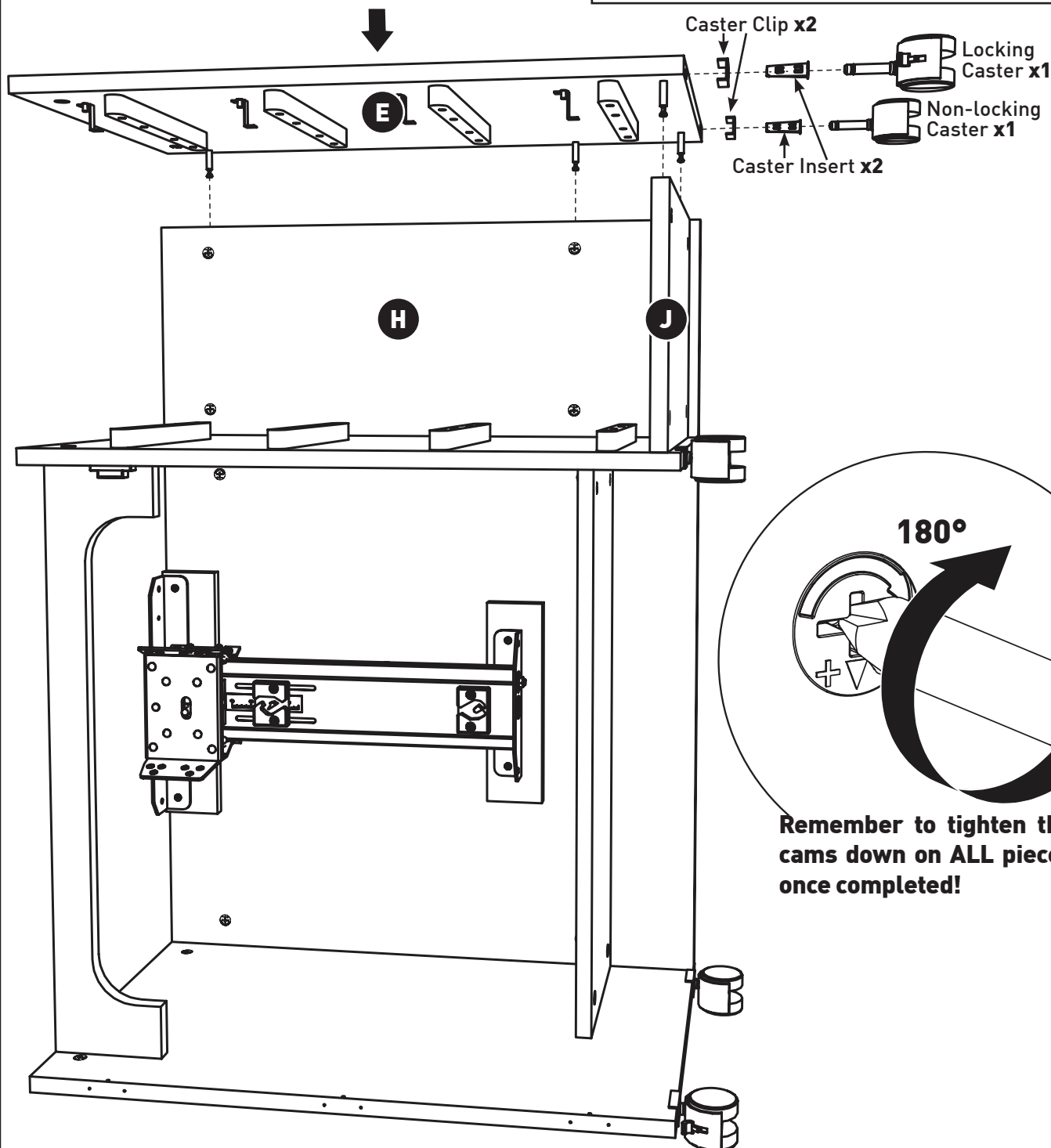


FIG. 10

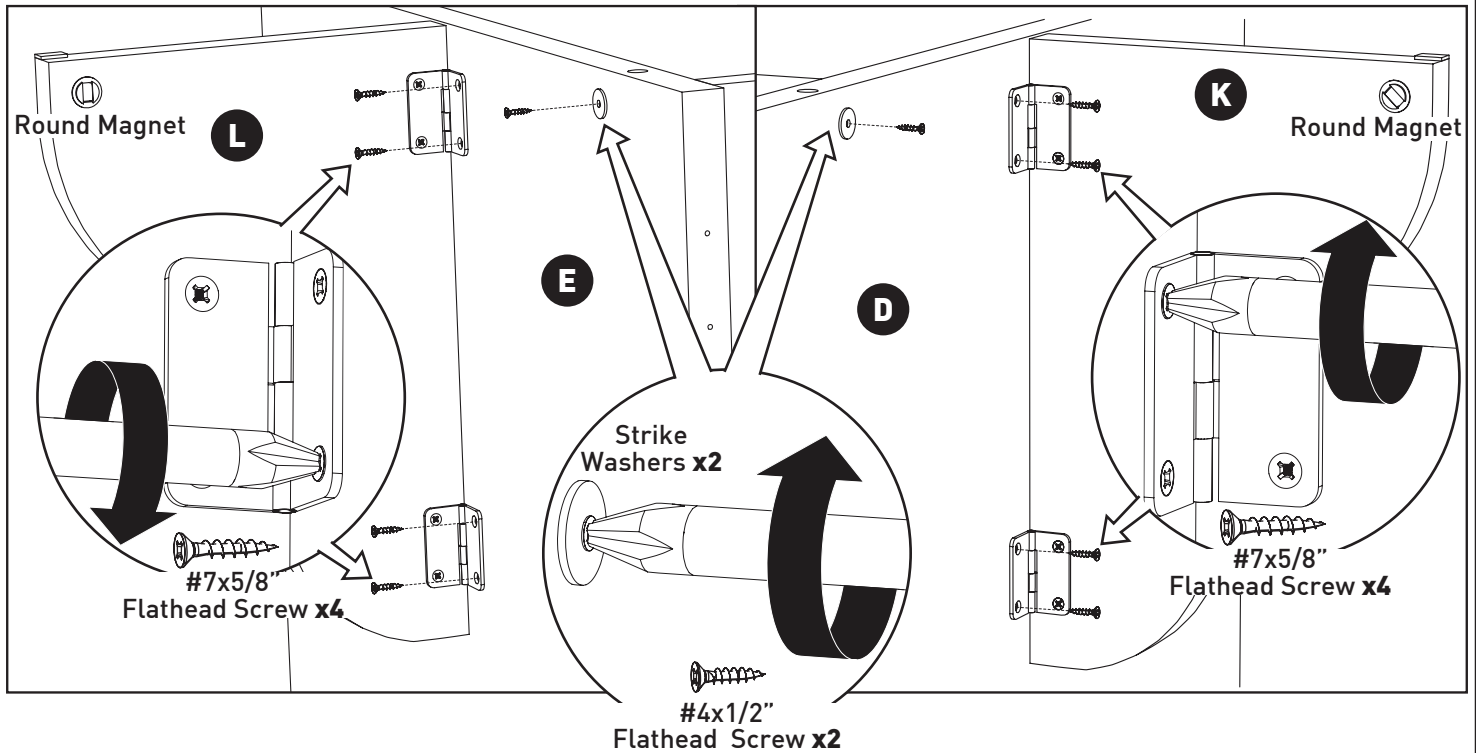


Remember to tighten the cams down on ALL pieces once completed!

Step 11. Attach the Leaf Support Wings (L & K) to outside of Right and Left Sides (D & E), on right and one Left with #7x5/8" Flathead Screws (x8).

Now, attach the Bronze Strike Washers (x2) for the Round Magnet to each side (D & E) with #4x1/2" Flathead Screws (x2) (as shown In FIG. 11).

FIG. 11

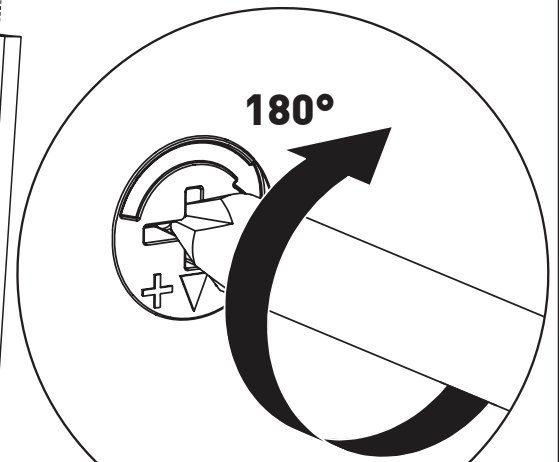
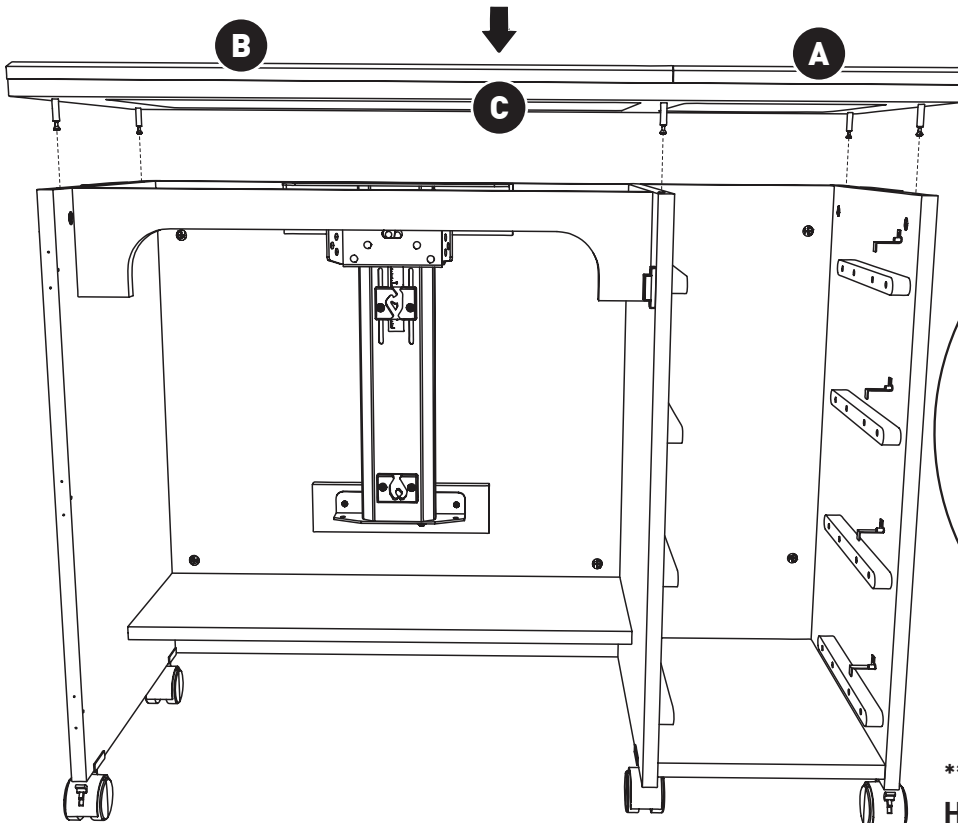


Step 12. With an assistant, grasp the Top and Leaves together (top assembly) Parts A, B & C and guide the Connecting Bolts into the corresponding

holes in the Sides Parts E, D & F (as shown in FIG 12).

Turn the Cams to the tocking position.

FIG. 12



Remember to tighten the cams down on ALL pieces once completed!

****There are 25 cams & connecting bolts. Have you tightened all 25 cams?**

Step 13. Once Top Assembly (A, B, C) is on securely, with 2 people **CAREFULLY** flip the cabinet on its back, as shown in FIG. 13A.

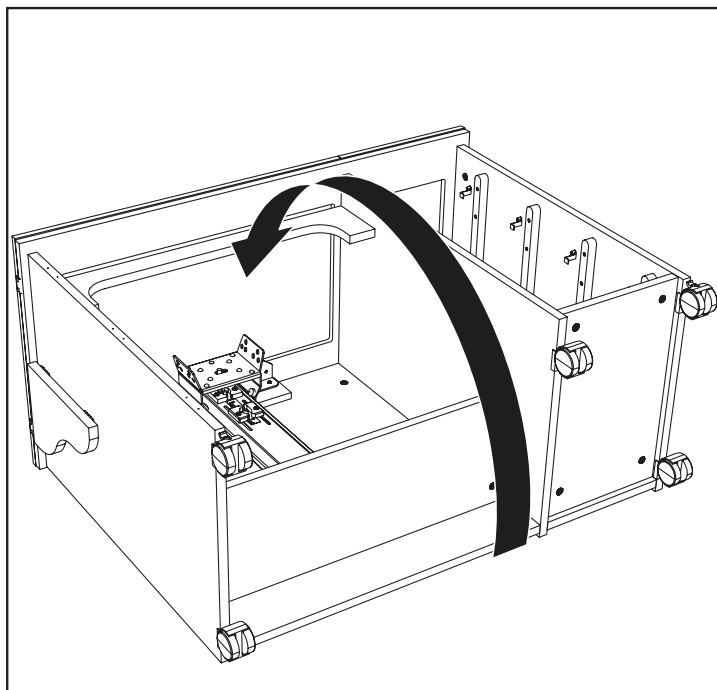


FIG. 13A

Once the cabinet is on its back, open both leaves as shown in FIG 13B. Make sure the area you are using is clean from debris, so you do not scratch the veneer on cabinet when flipping it.

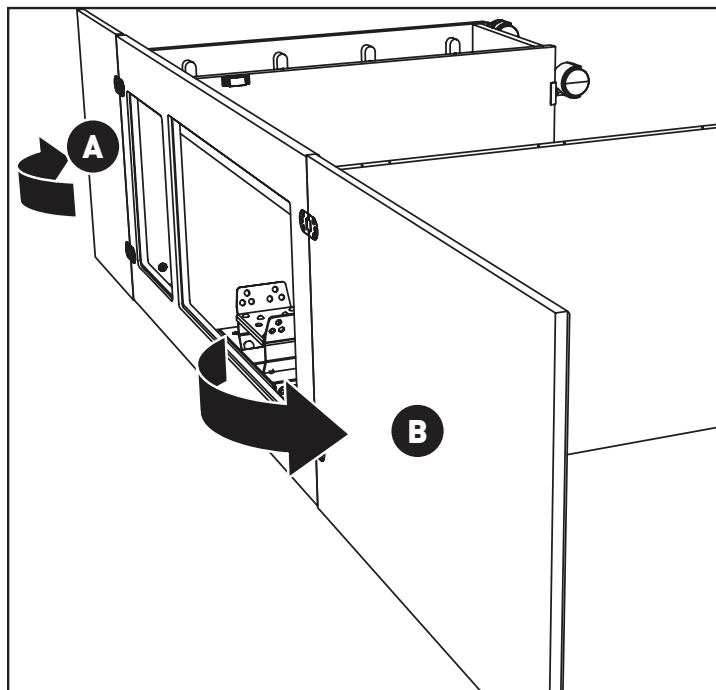


FIG. 13B

With 2 people **CAREFULLY** support the leaves and tip the cabinet over on its top, as shown in FIG. 13C & 13D.

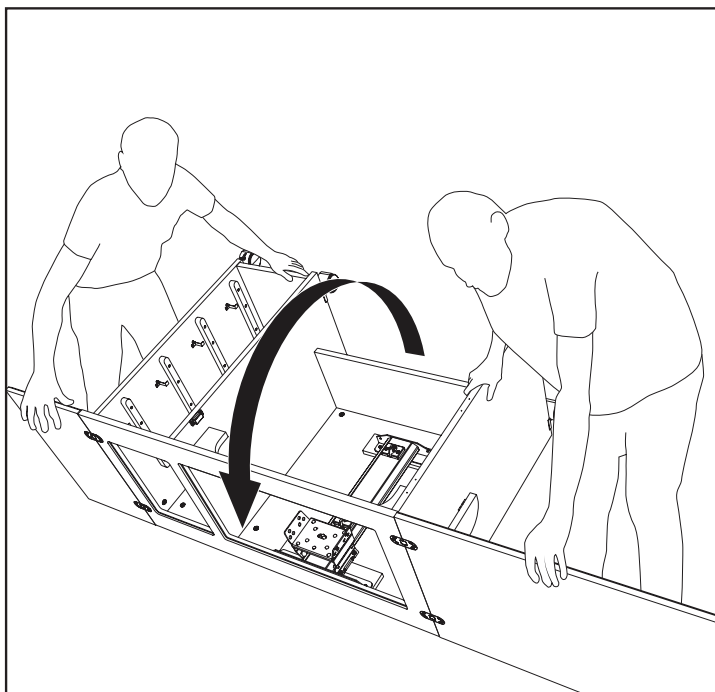


FIG. 13C

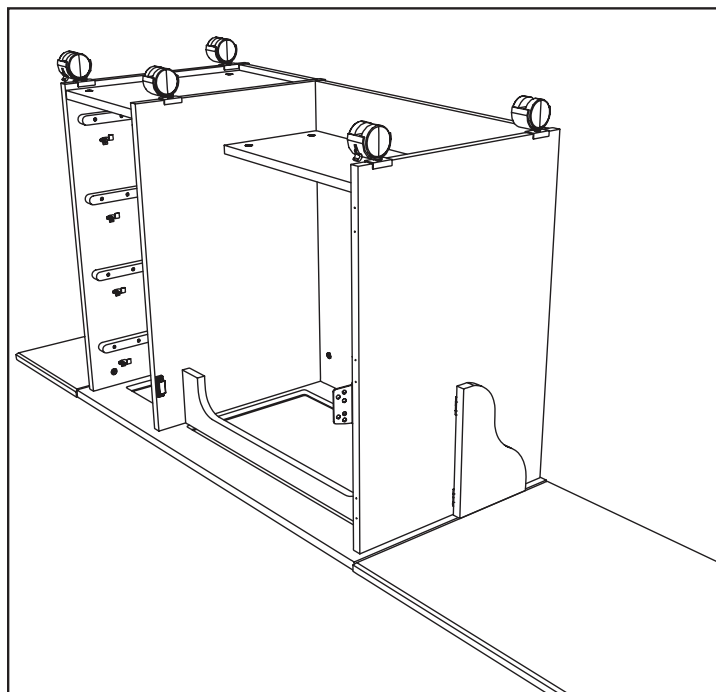
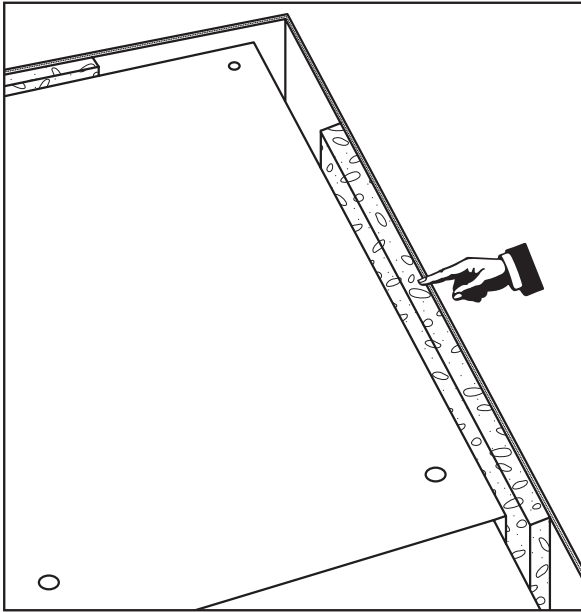


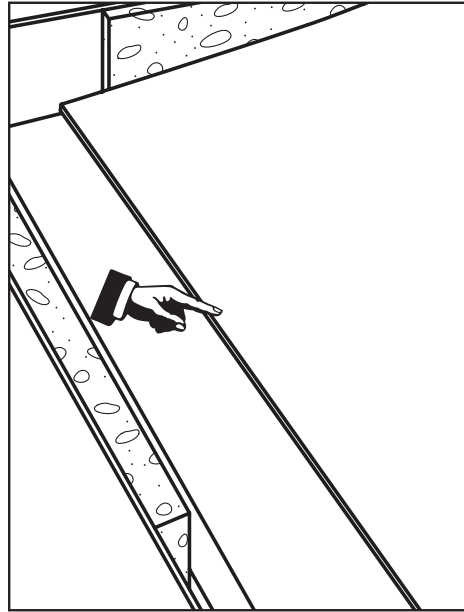
FIG. 13D

Step 14. The opening you set your sewing machine on in the cabinet is quite large. The opening allows the cabinet to accommodate larger sewing machines, but makes it difficult to level the platform you set your machine on.

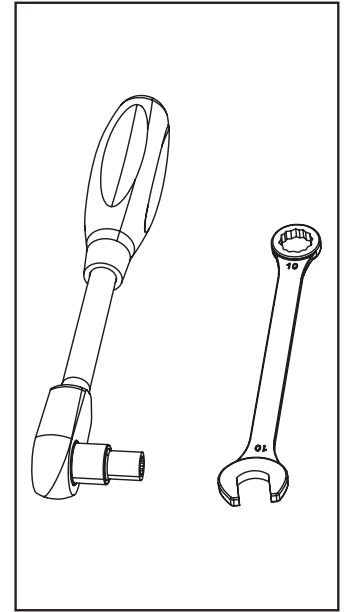
The following instructions will help you level the Platform (M). You will need the styrofoam from the box, a sheet of cardboard from the box & a 10 mm wrench and an adjustable socket wrench.



Styrofoam from box



Cardboard from Box

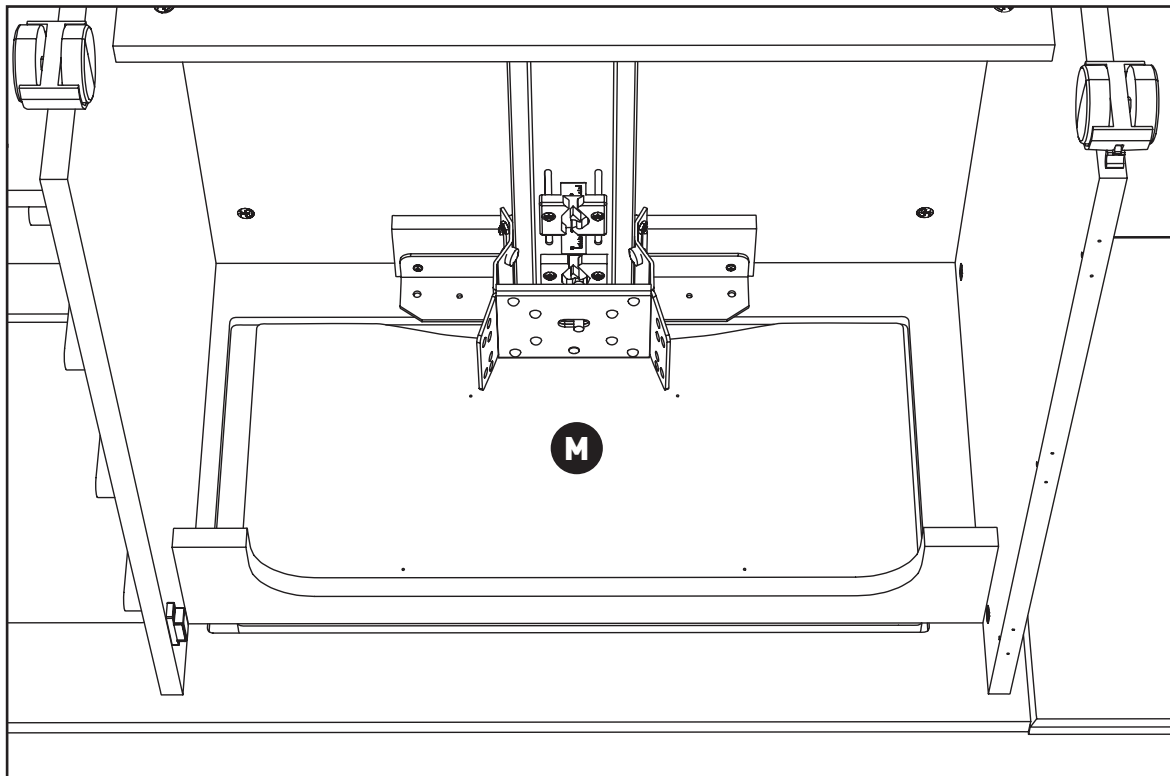


10 mm wrench & an
Socket wrench

Step 15. Slightly lift the cabinet and place the Platform (M) under the top. Cut out on Platform

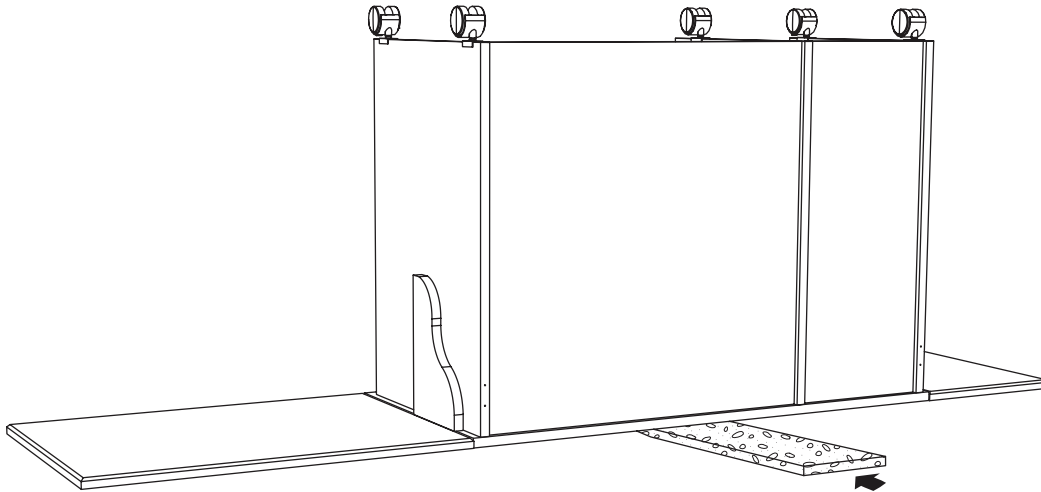
will face the back under the airlift, as shown in FIG. 14.

FIG. 14

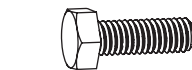


Step 16. Place 5/8" styrofoam from the box contents under the Top at the back of the unit, as shown in Fig. 15.

FIG. 15



Step 17. Take metal wings and attach them to the airlift carriage using the 10 mm hex nut bolts (x8), 4 bolts per wing. Attach the bolts on loosely, as you will tighten them down in a later step. The metal wings are placed on the inside of the airlift carriage flanges facing outward, as shown in FIG 16. Once complete remove styrofoam from back of cabinet.



10mm Hex Bolt x8

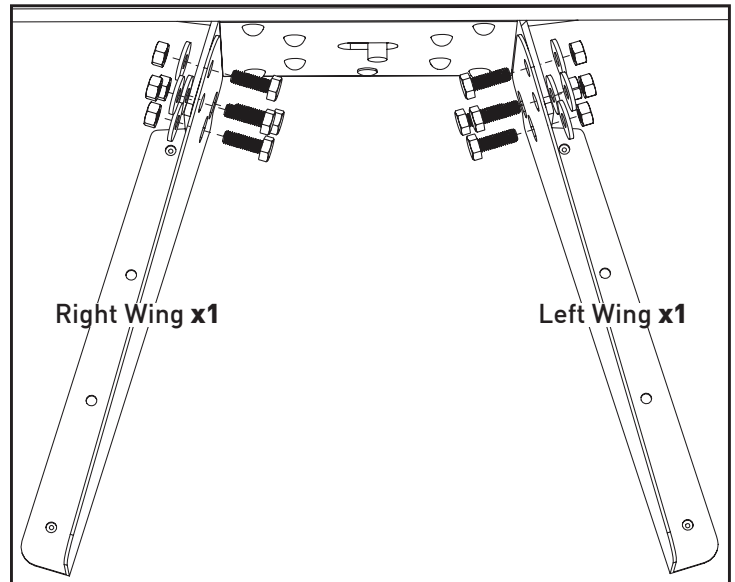


10mm Hex Nuts x8



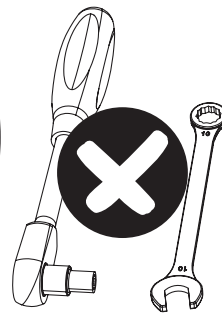
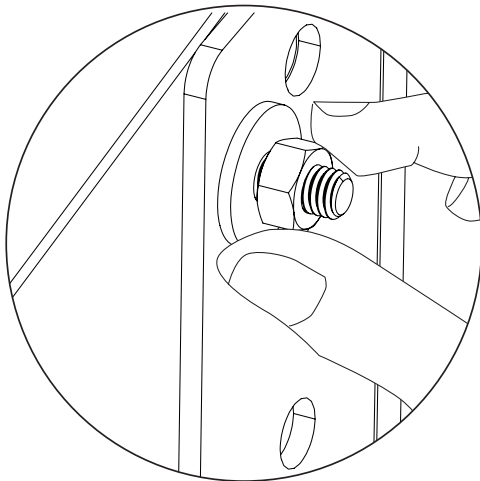
Washers x8

FIG. 16



Right Wing x1

Left Wing x1



Step 18. Cut cardboard sheet from box contents into 6-8 strips of 6" long x 2" wide strips. If the cardboard is too thick use an envelope folded in half. Fig. 17

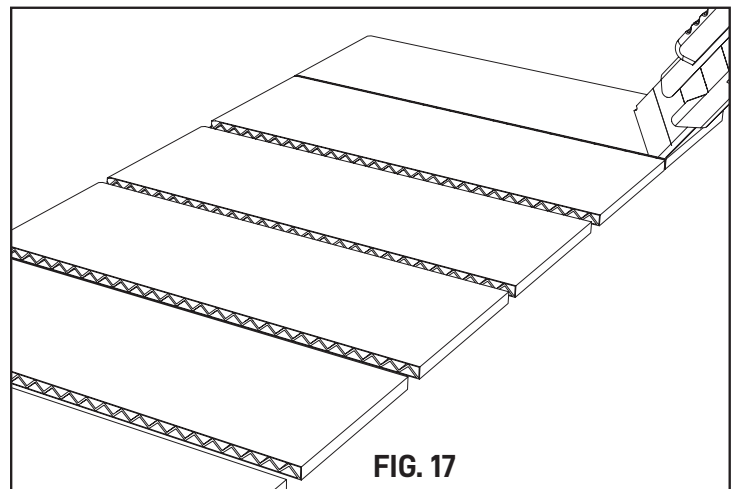
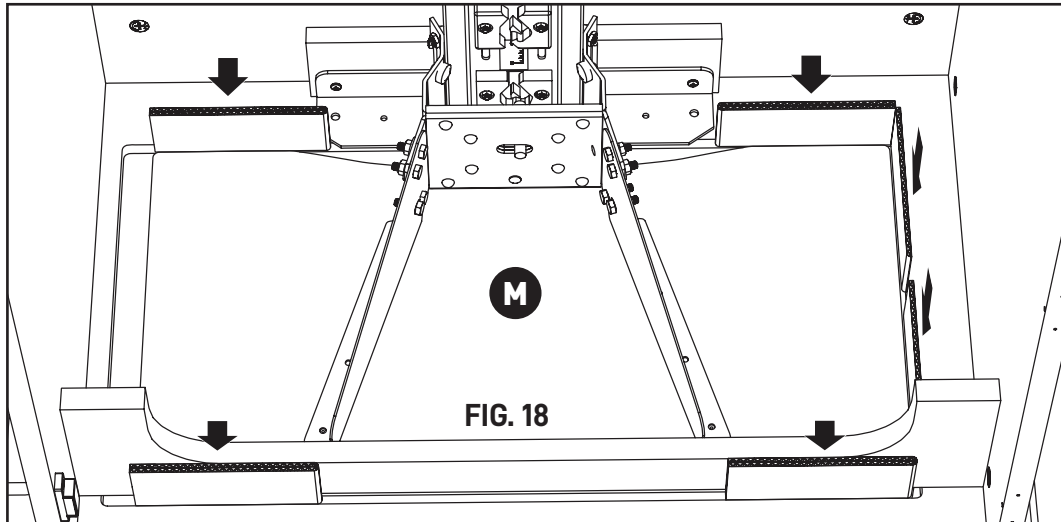


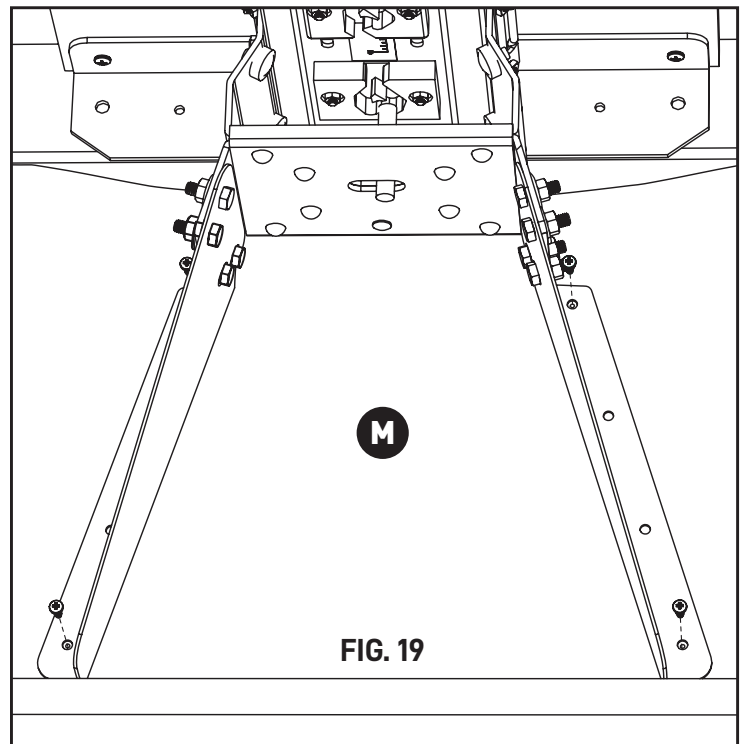
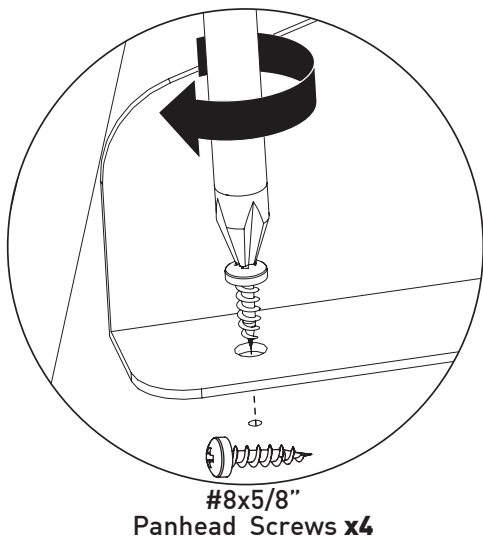
FIG. 17

Step 19. Place cardboard strips around the Platform (M) to keep the Platform square, as shown in FIG. 18. Make sure the Platform has

clearance on all sides. If cardboard is too thick use envelopes folded in half.

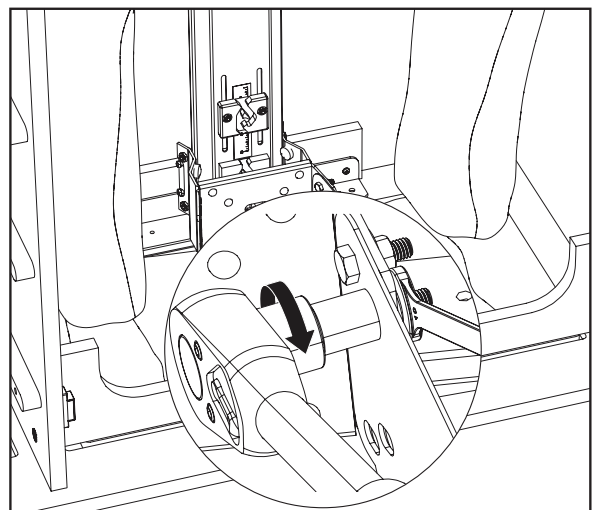


Step 20. Attach the metal left and right wings to the Platform (M) using large silver #8x5/8" screws (x4). The long flanges facing outward & toward the edge of the Platform. Place screws in pre-drilled holes on metal wings and Platform.



Step 21. Using 2 people, a 10mm wrench and an adjustable wrench tighten down the hex nut bolts (x8) on the metal wings and airlift carriage. To prevent the Platform (M) from rising up as it is being tightened, have the second person stand on the platform while another tightens the hex nut bolts (x8) down. The even pressure applied will help the platform to not rise up. Make sure the cabinet is on a level sewing surface. See Fig. 20.

FIG. 20



Step 22. Using 2 people CAREFULLY lift and turn the cabinet right side up placing the unit on the 5

casters. Be careful not to lean the cabinet weight on the casters to avoid damage.

Step 23. Attach Door (0) using #4x1/2" Flathead screws (x9) as shown in Figure 21 below. Next

attach Door Knob using bolt located in bag with knob as shown in Figure 21A.

FIG. 21

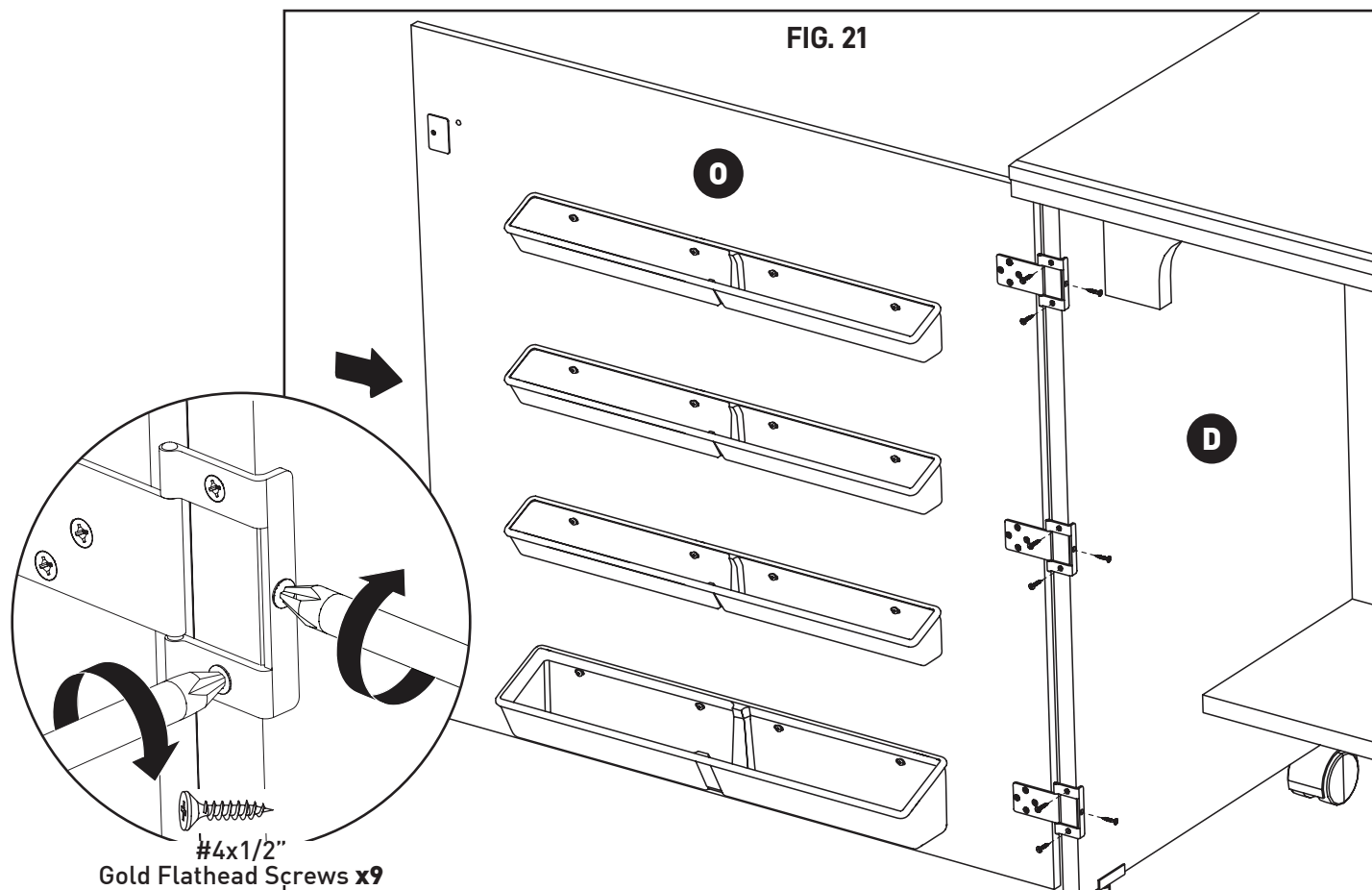
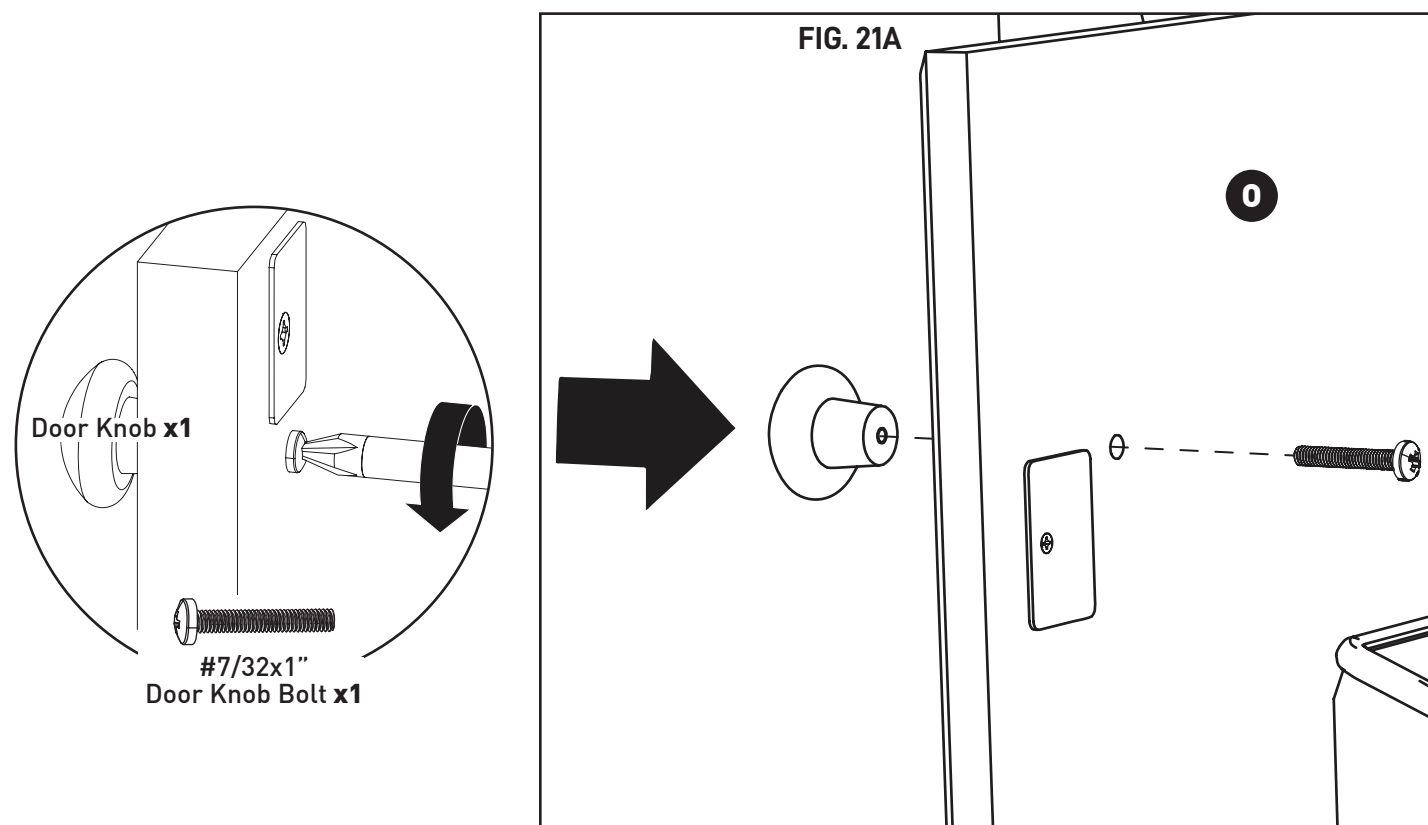
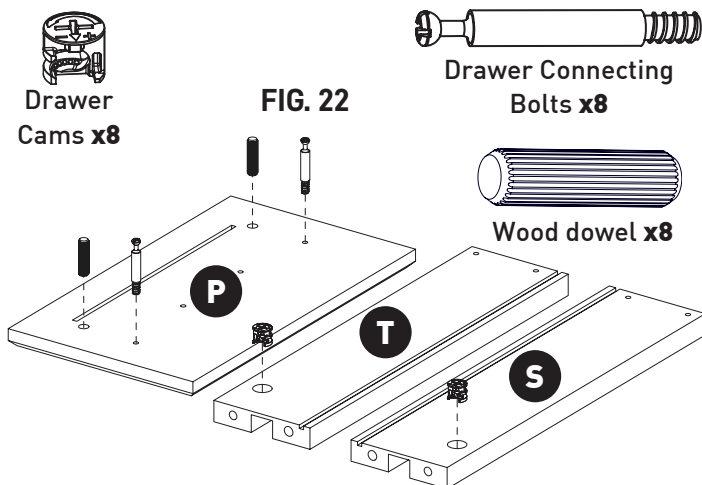


FIG. 21A



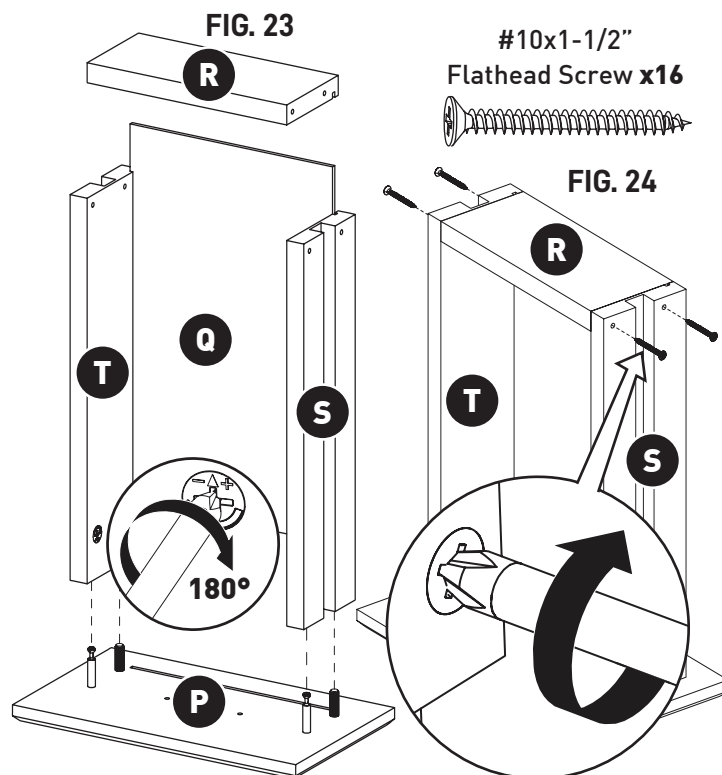
Step 24. Thread Drawer Connecting Bolts (8 total) into pre-drilled holes in Top Drawers Front (Px4). Install DrawerCams (8 total) in Drawer side (Sx4, Tx4) by pushing a Cam into each hole flush with surface (as shown in FIG. 22).



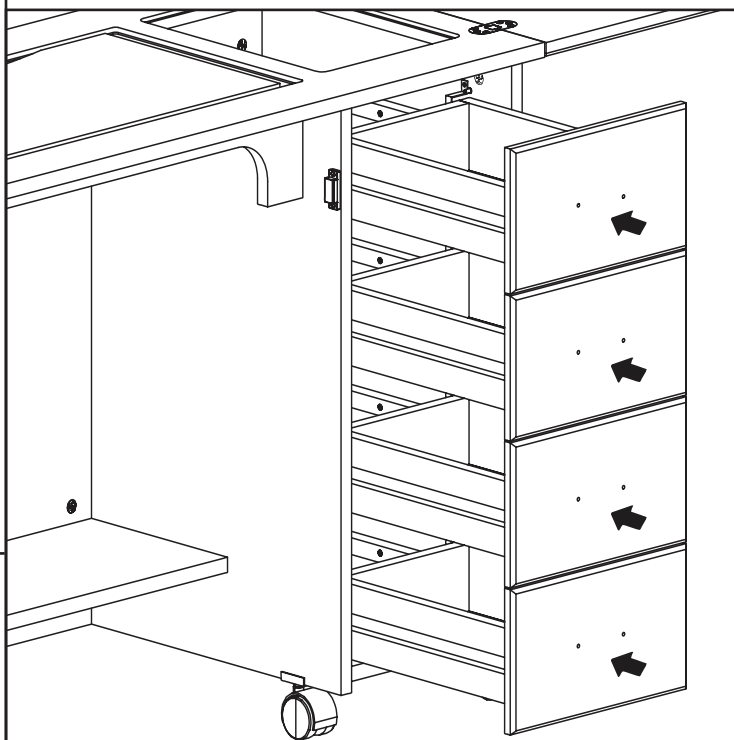
Step 25. Attach Top Drawer Sides (S,T) to Top Drawer Front (P), guide Drawer Connecting Bolts into holes in Drawer Sides (S,T), turn DrawerCams to locked position.

Slide Drawer Bottom (Q) along grooves on the Sides Into the Groove In Drawer Front (P) (as shown in FIG. 23).

On the other side, attach the Drawer Back (R) to Drawer sides (S,T) with the #10x1-1/2" Flathead Screw (x16) (as shown in FIG. 24).

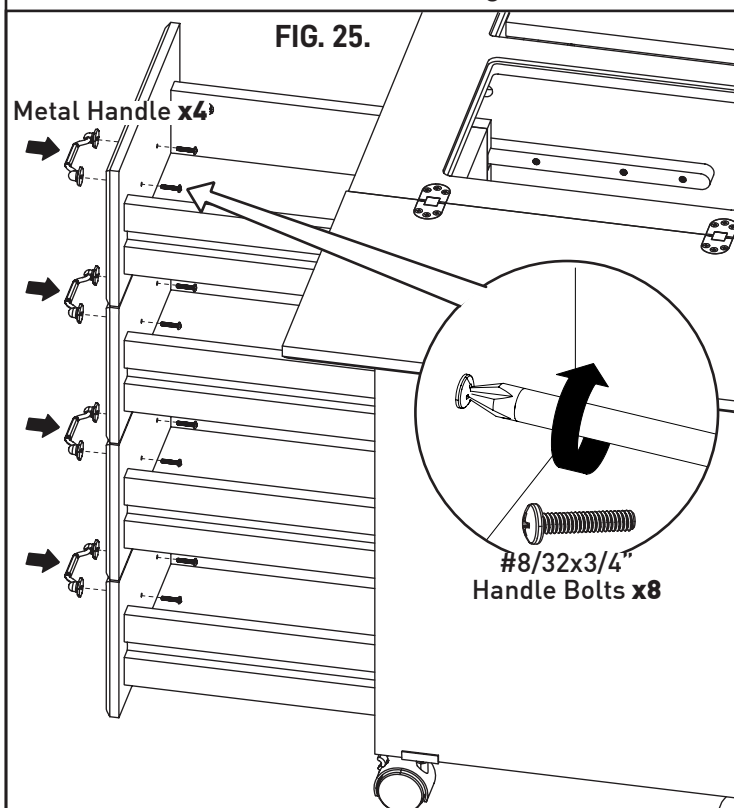


The Drawer may now be installed into your cabinet as shown. The middle slot of the drawer side, slides onto the drawer runner. Do not place the drawers on top of the drawer runners.

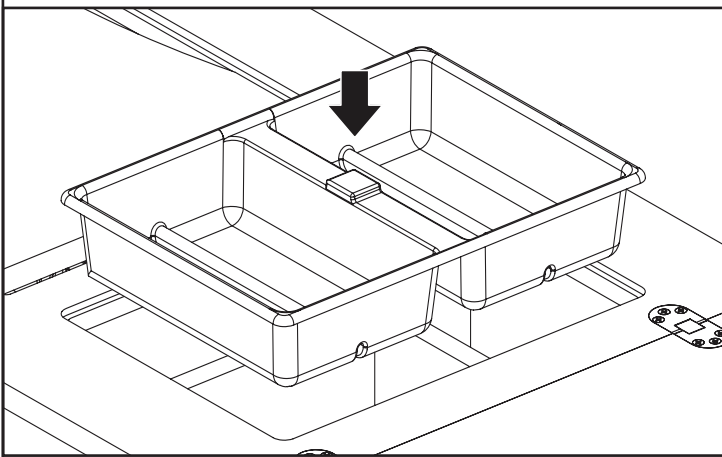


Step 26. Attach the Metal handle to the Top Drawers Front (P) using 8/32x3/4" Bolt (x4) (as shown in FIG. 25).

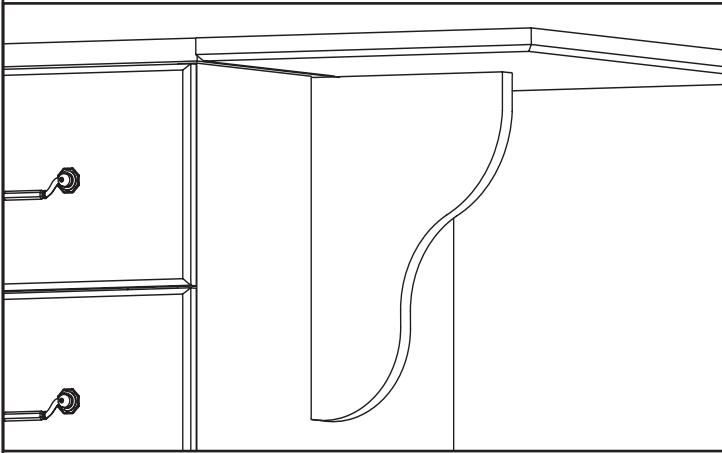
NOTE: The Metal pull is a 3 piece pull- 2 Rosettes and Handle. Attach the two Rosettes loosely on front, insert Handle into end holes and tighten bolts.



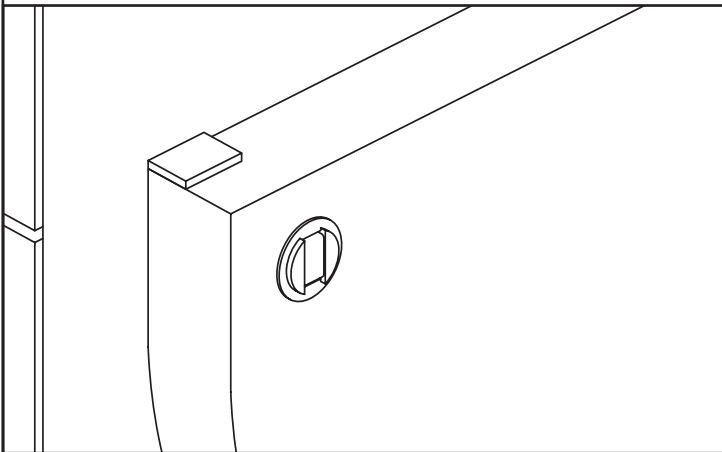
Finishing Norma Jean Assembly



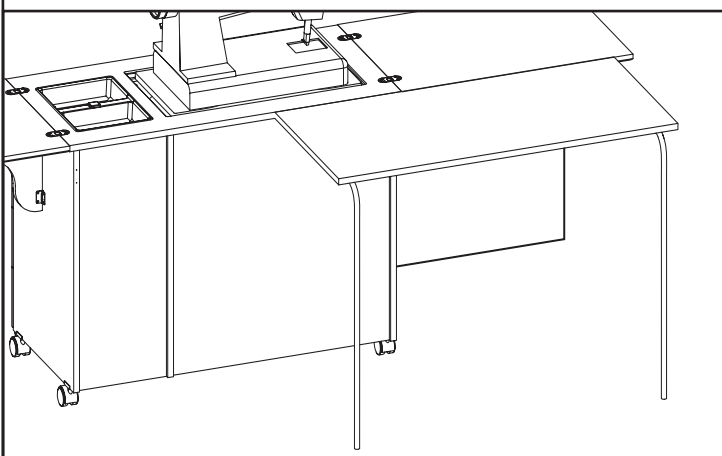
Tote Tray Placement in Cabinet Top.



Leaf Supports should be used at all times when leaves are open.



Correct placement of rubber tab on leaf support. Opposite edge from round magnet.



Quilt Leaves are available for this cabinet. They expand another 5 square feet behind the cabinet for your quilting and sewing experience.

Your platform located in the cabinet can be drilled to accommodate the mounting of a sewing machine to it. It is NOT our recommendation to mount or bolt your sewing machine down for the Air-Lift mechanism to work. The Air-Lift mechanism will still work even if the sewing machine is not bolted down.

If however, you want to mount/bolt your sewing machine down to the platform, you **MUST** wait until you receive your machine specific insert. Once you receive your machine specific insert, move your machine on the platform to allow the insert to fit around the machine.

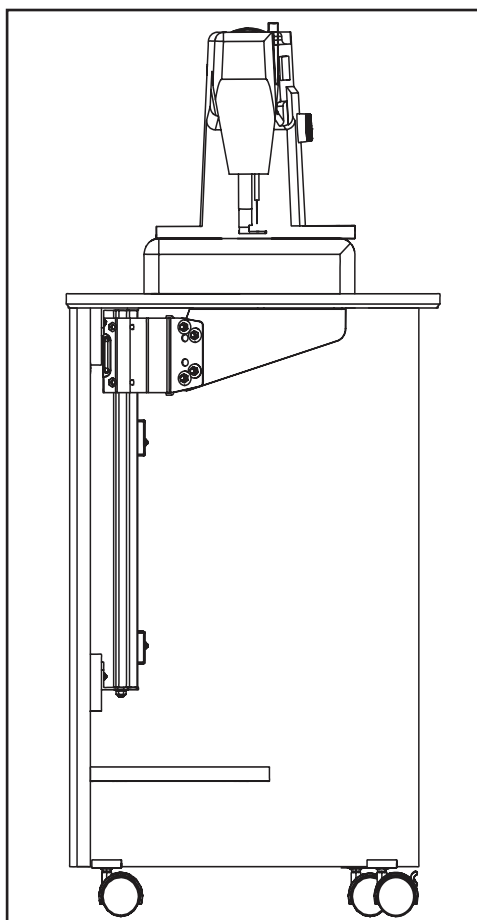
Once the insert fits around the machine, you can mount/bolt the machine down. You will need to purchase mounting bolts for your sewing machine from your local dealer or the manufacture of your machine. Place the bolts in the bottom of your sewing machine and mark the bottom of the bolt with lipstick or a marker. Place the machine with the bolts hanging down and the insert in place on the platform in the preferred position.

CAUTION:

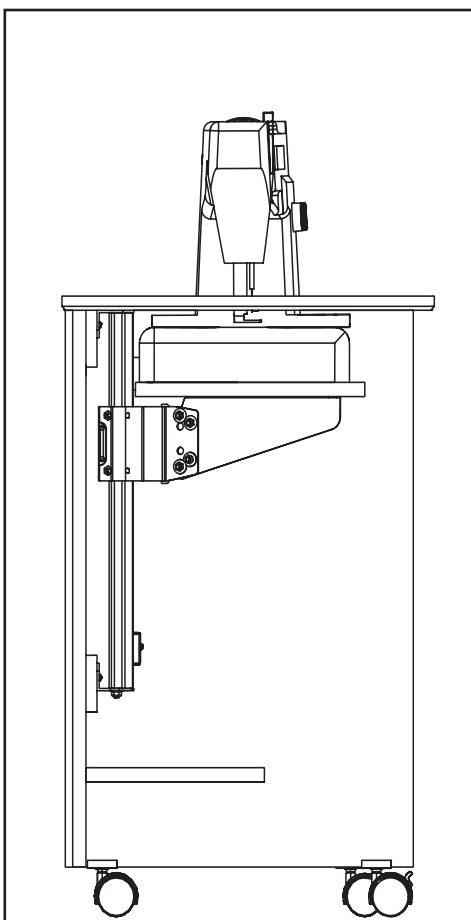
This cabinet is equipped with a vertical Air-Lift Mechanism which is powered by gas filled cylinder to aid in raising and lowering the sewing machine.

Because gas filled cylinder is heavy duty do not let go of machine and platform when moving from one position to the other.

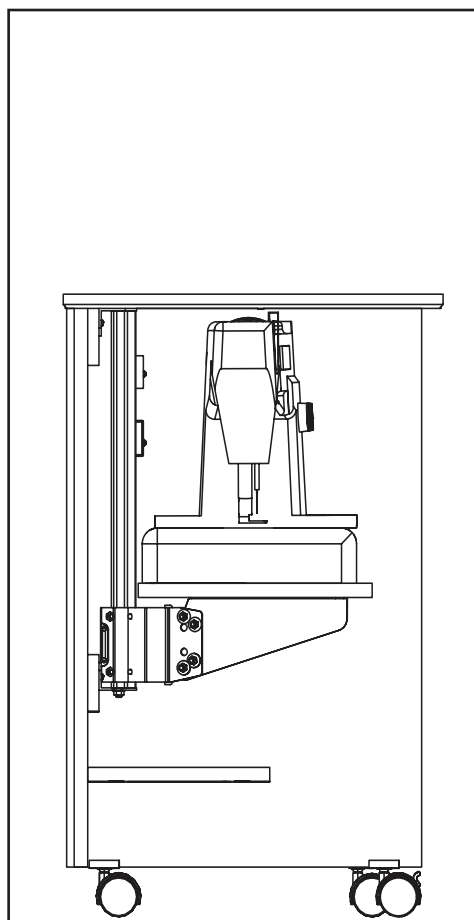
To move the Platform to any position please follow the instructions on following page.



Freearm Position



Flatbed Position



Storage Position

Adjusting the Platform Height for the Flatbed

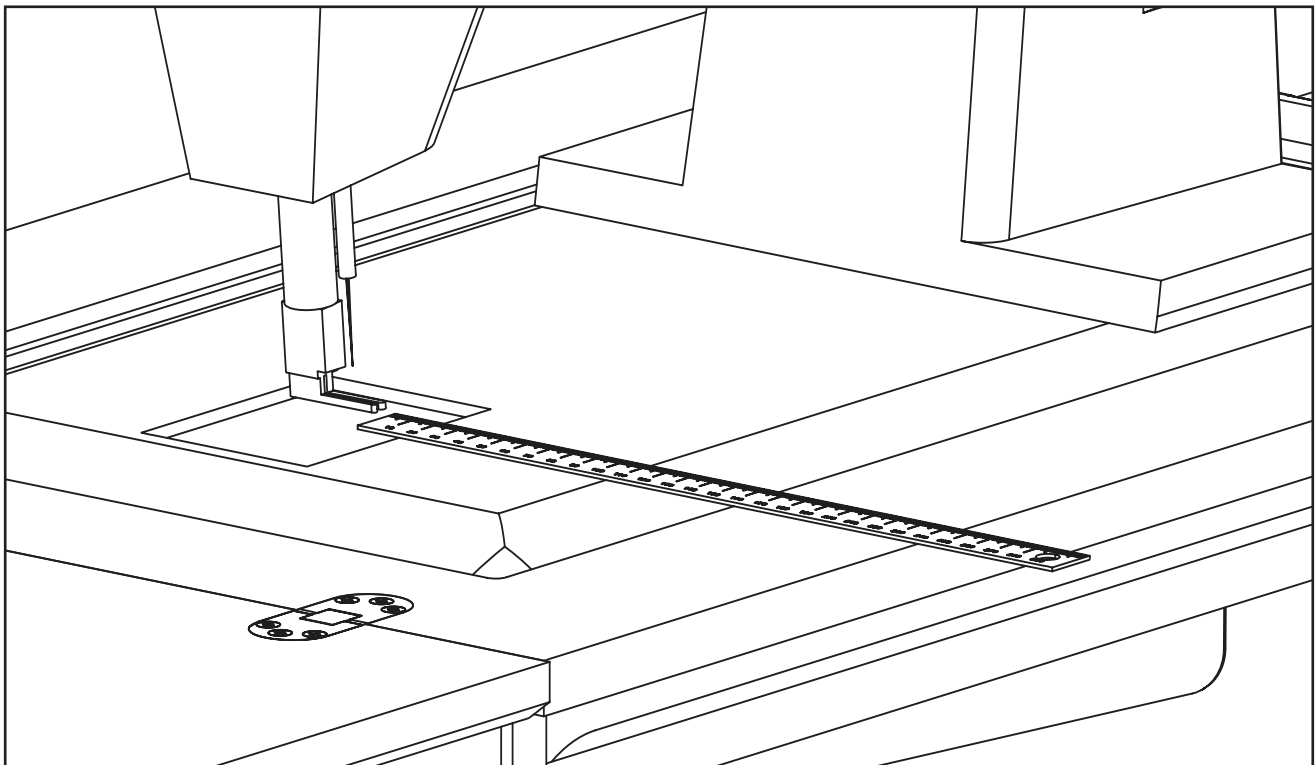
The Air Lift has 3 positions for your sewing machine: storage, flatbed and freearm. The flatbed position is the second position on the Air Lift and is the position most sewers will sew in. The tip of the needle on your sewing machine should be level with the edge of the cabinet for proper positioning in the flatbed position as seen in the below picture. If your needle is sitting too far down in the cabinet or too far above the edge of the cabinet you will need to adjust your Air Lift.

Follow these simply instructions for adjustment of your Air Lift:

1. Place your sewing machine on the platform inside the cabinet.
2. Place the Air lift mechanism in the top position or freearm position.
3. Tuck your head under the cabinet looking at the Air Lift Mechanism.
4. You will notice the Air Lift has 3 black square boxes on it. The middle black square box has a scale behind it.
5. Go to the middle black square box and loosen the 2 silver hex nuts using an 8 mm wrench.
6. Move the platform where your sewing machine is sitting down to the desired flatbed position. Remember the tip of the needle should be level with the edge of the cabinet.
7. Once you have the desired position look under the cabinet at the scale to see what mark the scale is at.
8. Move the platform back to the top position or freearm position.
9. Move the black square box to the correct number on the scale and re-tighten down the hex nuts using an 8 mm wrench.

***The adjustment may take 2 or 3 times before it is right.**

If the platform returns to its original flatbed position you have not tightened the hex nuts down tight enough.



Watch our helpful video “Airlift Height Adjustment” at www.arrowcabinets.com

How To Work the Air Lift Mechanism

The Air Lift has 3 positions for your sewing machine: storage, flatbed and freearm.

Follow these simple instructions to move the Air Lift into the 3 Different Positions:

1. Once your cabinet is fully assembled you can begin moving the Air Lift.
2. To activate the mechanism for the first time open the door on the cabinet and push down with 2 hands on the platform and release, as shown below in pictures 1 and 2.
3. The top position known as the freearm position usually takes 2 small pushes to activate. The freearm position has more resistance then the other two positions.
4. Once you are comfortable moving the platform up and down into the 3 positions place your sewing machine on the platform.
5. Before moving the platform with your sewing machine on it, check to see that your machine is sitting centered on the platform and will not hit the sides of the cabinet as it moves up and down in the cabinet.
6. Push down on your sewing machine sitting in the cabinet to activate the Air Lift, as shown below in picture 3.
7. Heavier machines (20 pounds or more) may move slower then other lightweight machines and may need assistance as they move into the top positions. Heavier machines may require you to lift slightly on the platform for machine to lock the Air Lift into position.

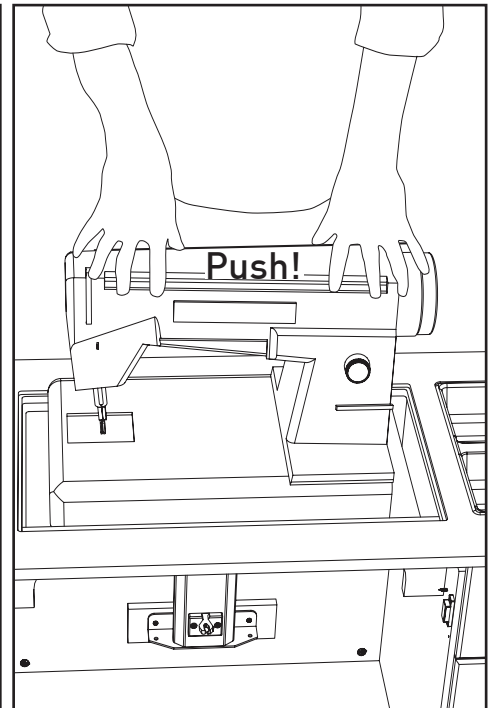
For a demonstration, watch our video "How Airlift Works" at www.arrowcabinets.com



Picture 1

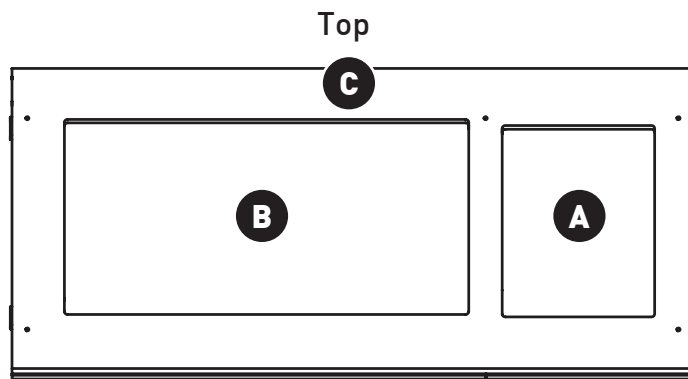


Picture 2



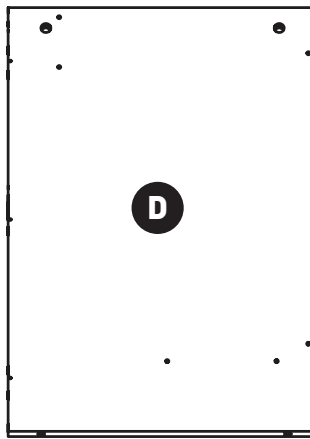
Picture 3

Wood Parts and Part Numbers

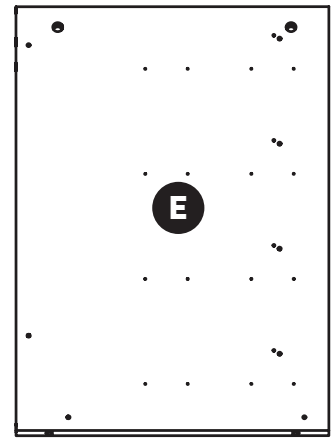


Left Leaf

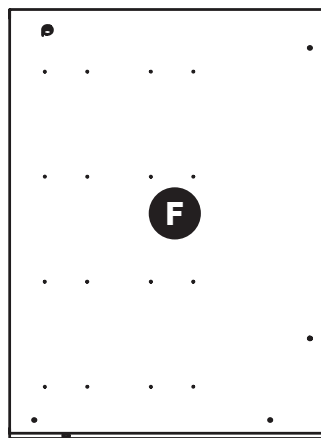
Right Leaf



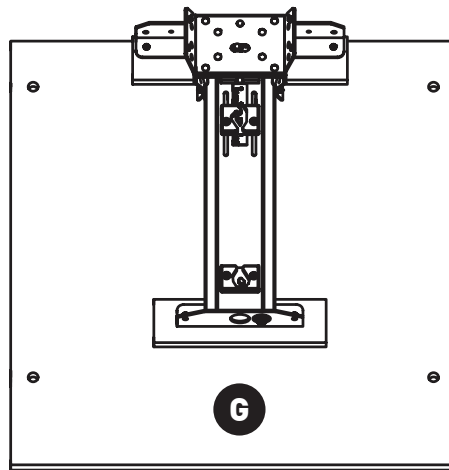
Left Side Panel



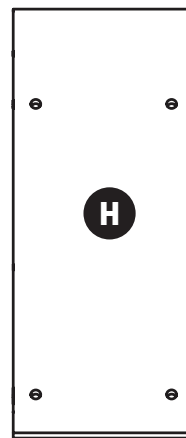
Right Side Panel



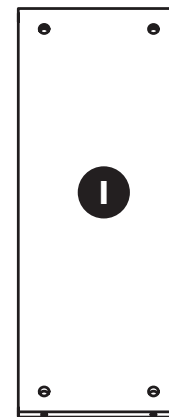
Partition



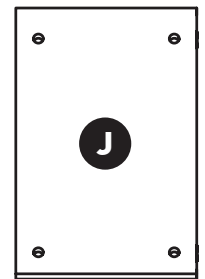
Back



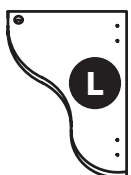
Compartment Back



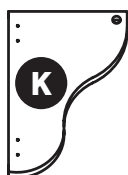
Shelf



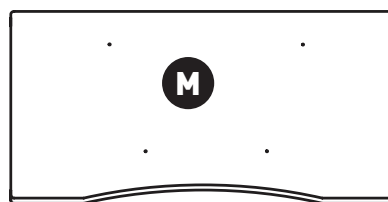
Compartment Bottom



Right Leaf Supports



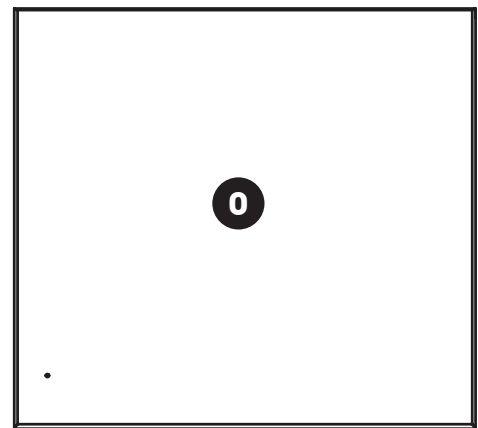
Left Leaf Supports



Platform



Front



Door



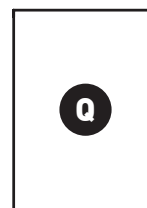
Drawer Side Left



Drawer Side Right



Drawer Back



Drawer Bottom



Drawer Front

Wood Parts and Part Numbers

Ref.	Description	Part#	Part#	Part#	Part#
	Cabinet Model#	350 (Oak)	351 (White)	352 (Cherry)	353 (Black)
A	Right Leaf	NJ003283	NJ003220	NJ004002	NJ003283B
B	Left Leaf	NJ003284	NJ003221	NJ004003	NJ003284B
C	Top	NJ003288	NJ003225	NJ004004	NJ003288B
D	Left Side	NJ003286	NJ003223	NJ004005	NJ003286B
E	Right Side	NJ003285	NJ003222	NJ004006	NJ003285B
F	Partition	NJ003287	NJ003224	NJ004007	NJ003287B
G	Back	NJ003298	NJ003235	NJ004008	NJ003298B
H	Compartment Back	NJ003293	NJ003230	NJ004009	NJ003293B
I	Shelf	NJ003289	NJ003226	NJ004020	NJ003289B
J	Compartment Bottom	NJ003290	NJ003227	NJ004011	NJ003290B
K	Left Leaf Support Wing	NJ003271	NJ003218	NJ004012	NJ003271B
L	Right Leaf Support Wing	NJ003282	NJ003219	NJ004013	NJ003282B
M	Platform	NJ003297	NJ003234	NJ004014	NJ003297B
N	Front	NJ003296	NJ003233	NJ004015	NJ003296B
O	Door	NJ003295	NJ003232	NJ004016	NJ003295B
P	Drawer Front	NJ003294	NJ003231	NJ004017	NJ003294B
Q	Drawer Bottom	NJ003161	NJ003161	NJ004017	NJ003116
R	Drawer Back	NJ003152	NJ003152	NJ003152	NJ003152
S	Drawer Side Right	NJ003140	NJ003140	NJ003140	NJ003140
T	Drawer Side Left	NJ003141	NJ003141	NJ003141	NJ003141

Hardware Included with Part Numbers

A #4x1/2" Gold Flathead Screw



B #6x5/8" Gold Panhead Screw



C #8x1/2" Panhead Screw



D #7x5/8" Flathead Screw



E #6x1" Flathead Screw



F #7/31x1" Door Knob Bolt



G #8x5/16" Flathead Screws



H #5x5/8" Bronze Flathead Screw



I #8/32x3/4" Handle Bolts



J #8x5/8" Panhead Screw



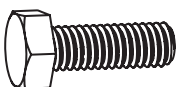
K #10x1-1/4" Flathead Screw



L #4x1/2" Screw



M 10mm Hex Bolt



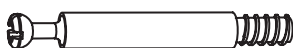
N 10mm Hex Nut



O Washer



P Connecting Bolt



Q Drawer Connecting Bolt



R Cam



S Drawer Cam



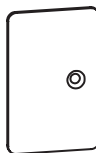
T Wooden Dowel



V Bronze Strike Washers



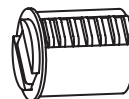
X Strike Plate



Y Metal Dowel



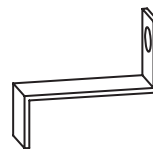
U Round Magnet



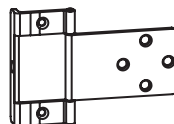
W Self Sticking Rubber Tab



Z Drawer Stopper



AA Door Hinge



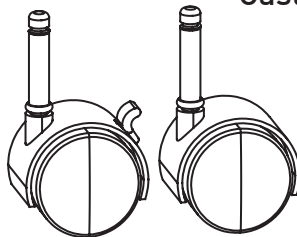
BB Caster Insert



CC Caster Clip

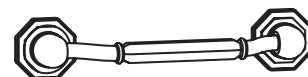


DD Locking Castor

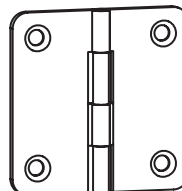


EE Non-Locking Castor

FF / GG Metal Handle



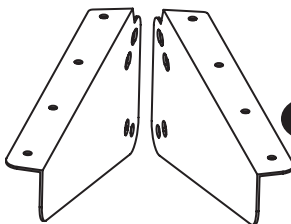
JJ Support Hinge



KK / LL Knob



HH Left Wing

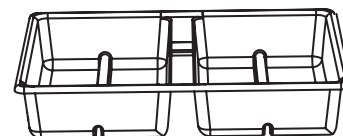


II Right Wing

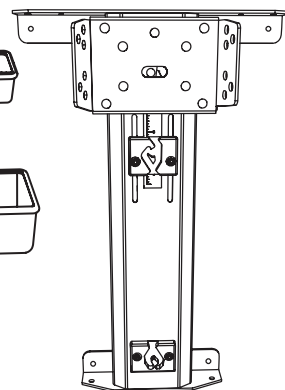
MM Door Magnet



NN Tote Tray



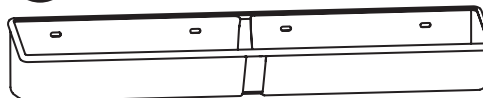
RR Norma Jean Airlift



OO Plastic Tray Small



PP Plastic Tray Large



QQ Drawer Runner



Hardware Included with Part Numbers

Item	Description	Part No.
A	#4x1/2" Gold Flathead Screw	000709
B	#6x5/8" Gold Panhead Screw	000083
C	#8x1/2" Panhead Screw	002614
D	#7x5/8" Flathead Screw	000709
E	#6x1" Flathead Screw	001325
F	#7/31x1" Door Knob Bolt	000709
G	#8x5/16" Flathead Screw	000709
H	#5x5/8" Bronze Flathead Screw	003172
I	#8/32x3/4" Handle Bolts	003191
J	#8x5/8" Panhead Screws	000709
K	#10x1-1/4" Flathead Screw	000709
L	#4x1/2" Screw	000709
M	10mm Hex Bolt	003175
N	10mm Hex Nut	003176
O	Washers	000220
P	Connecting Bolt	002892
Q	Drawer Connecting Bolt	000709
R	Cam	000709
S	Drawer Cam	000709
T	Wooden Dowel	000709
U	Round Magnet	002854
V	Bronze Strike Washers	000839
W	Self Sticking Rubber Tab	003174
X	Strike Plate	002192
Y	Metal Dowel	000709
Z	Drawer Stopper	000709

Item	Description	Part No.
AA	Door Hinge	002730
BB	Caster Insert	000368
CC	Caster Clip	000324
DD	Locking Caster	001135
EE	Non-locking Caster	001136
FF	Metal Handle Gold (350/352)	003169
GG	Metal Handle Silver (351/353)	003145
HH	Left Wing	003194
II	Right Wing	003193
JJ	Support Hinge	002734
KK	Knob Gold (350/352)	003170
LL	Knob Silver (351/353)	003165
MM	Door Magnet	001644
NN	Tote Tray	002869
OO	Plastic Tray Small	003146
PP	Plastic Tray Large	003158
QQ	Drawer Runner	002397
RR	Norma Jean Airlift	003167

Frequently Asked Questions About Sewing Cabinets

Q: Is the platform that I set my sewing machine on in the Norma Jean Model 350, 351, 352 adjustable?

A: Yes, just loosen up the two bolts on the middle black square bracket with the scale located on the airlift mechanism and either raise the platform up or down. To tighten the bolts down use an 8 mm wrench. If the platform returns to the same position the bolts are not tighten down enough. Watch "Airlift Height Adjustment" at www.arrowcabinets.com

Q: The drawers on the 350 series cabinets don't fit, why?

A: Loosen the screws on the drawer runners. If your drawer runners are turning white by the screw holes, you have tightened the runners down too tightly causing them to bow. Your drawer will not fit in the cabinet with bowed out runners.

Q: There does not seem to be holes for my drawer runners on the right side piece or the partition piece for my cabinet model 350 series, what do I do?

A: The drawer runner holes are very small and hard to see often. To make sure you have holes run your hand up and down the panels before calling the parts department.

Q: Do I need to bolt my sewing machine down to the platform in the cabinet for the airlift mechanism to work properly?

A: No. It is not necessary to mount your sewing machine down. The Air-Lift will work with or without the sewing machine being mounted down. We recommend that no sewing machine should be bolted down.

Q: My rubber bumpers keep falling off my leaf supports, what do I do?

A: The rubber bumpers should always go on the outside edge of the leaf supports. If you need new bumpers call 1-800-533-7347. To clean the surface of the leaf support before putting new bumpers on it, use a product like Goo Gone followed with window cleaner.

Q: How do I know if I am missing parts for my cabinet?

A: Make sure have received the right number of boxes from Fed Ex or UPS. Norma Jean come in 3 boxes. Sometimes deliveries are split up and boxes will arrive on different days. If you are missing boxes or parts, please call our toll-free line:

1-800-533-7347. The customer service line is open Monday through Friday 8:00 to 5:00 Central Standard time.

Q: My cabinet did not come with an insert listed as part number 9801, why?

A: The insert is a special order piece made to the dimensions of the sewing cabinet opening and the brand name/model number of your sewing machine. The machine specific insert is not a stocked item, so the Insert will ship separately from the cabinet. For further questions on machine specific inserts please call 1-800-533-7347.

Frequently Asked Questions About Sewing Cabinets

Q: The platform my sewing machine is on is not level, what do I do?

A: Loosen up the 6mm hex nuts and bolts located underneath the platform on the steel wings. Once the platform is loosened adjust the platform to the level you want and begin tightening the bolts back down. For best results use two 10mm wrench on both sides of the bolt and a level.

Q: My platform won't go down because it keeps hitting the 2 bolts located on the black square box located on the Air-lift mechanism, what do I do?

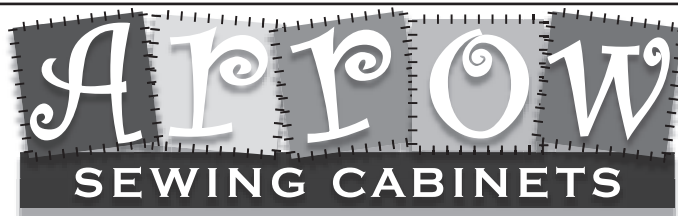
A: Loosen the 4#8x1/2" screws located underneath the platform on the steel wings and pull the platform slightly forward. The platform will only move a few centimeters, but it will be enough to clear the bolts in the back. Remember to tighten the screws back down.

Q: My Air-lift mechanism seems stiff and won't lift my machine all the way up, why?

A: The Air-Lift mechanism does not do all of the lifting; it assists you in lifting the machine.

You must lift or press on the machine.

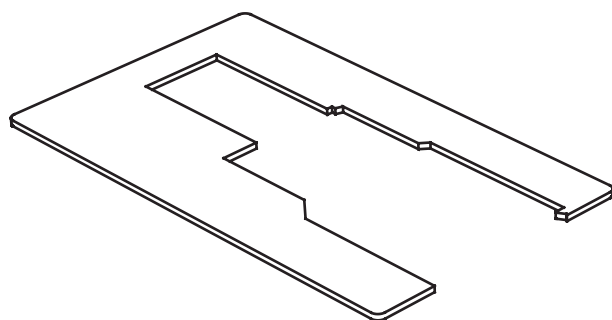
For more help and demonstrations, visit www.arrowcabinets.com Video section.



Accessories to Complete Your Sewing Experience

Custom Insert

Enhance your sewing experience with a custom-made insert for your Arrow or Kangaroo cabinet. Inserts are designed to reduce the gap between the machine and cabinet opening. This provides an ergonomic work surface for the free arm of the sewing machine, allowing for straighter stitches, less fatigue and an overall better experience using your machine and cabinet.

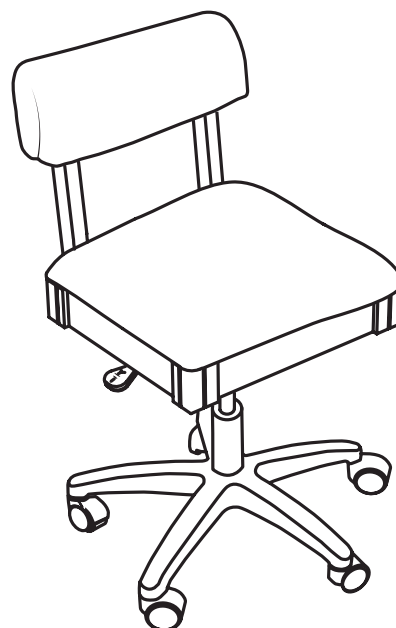


Insert

Arrow Sewing Chairs

Our sewing chairs are designed to provide comfort, support, and the fashionable look you want for your space. Our chairs are the perfect accessory for any craft and sewing room and are offered in several fabric and color options. "They provide necessary lumbar support and comfort for long term sewing. Arrow chairs also have a hidden storage compartment under the seat, perfect for hiding small notions, patterns, and anything else you need.

Visit your local Arrow dealer or arrowcabinets.com for ordering information.



Hydraulic Sewing Chair

P.O. Box 307 Delavan, WI 53115
1-800-533-7347
cs@arrowcabinets.com
www.arrowcabinets.com