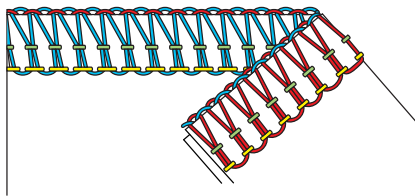


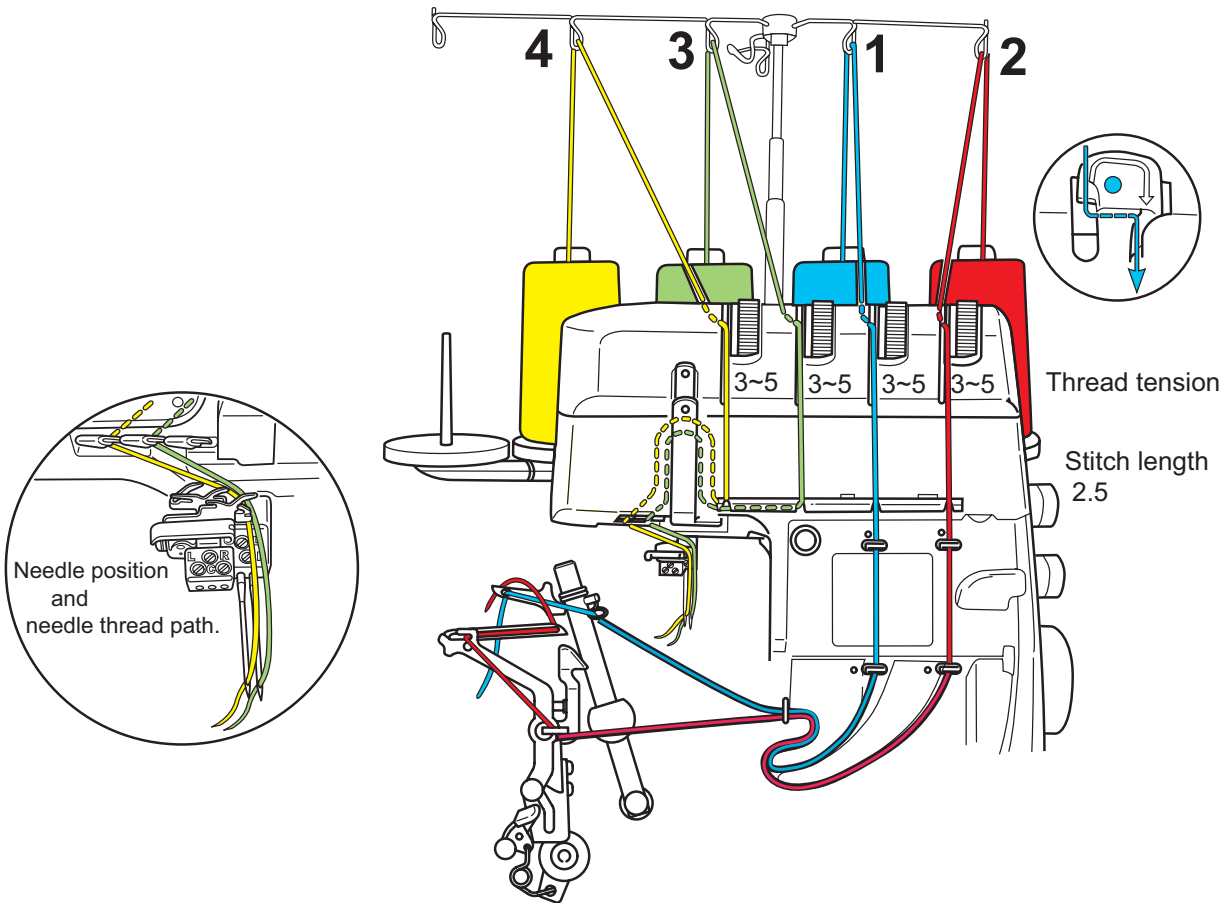
Threading Chart of 2-needle, 4-thread overlock sewing



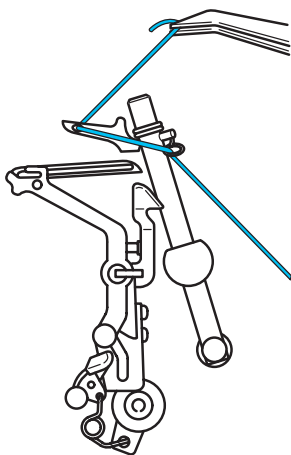
Threading preparations

1. Switch the machine off. (power switch "O")
 2. Pull the release lever forward to activate the upper looper. (Page 44)
 3. Push the button to lower the upper knife arm. (Page 44)
 4. Lower the upper knife. (Page 12)
 5. Attach the knife guard. (Page 45)
- * For more details, please refer to instruction manual.

Please thread in
numerical order 1~4.

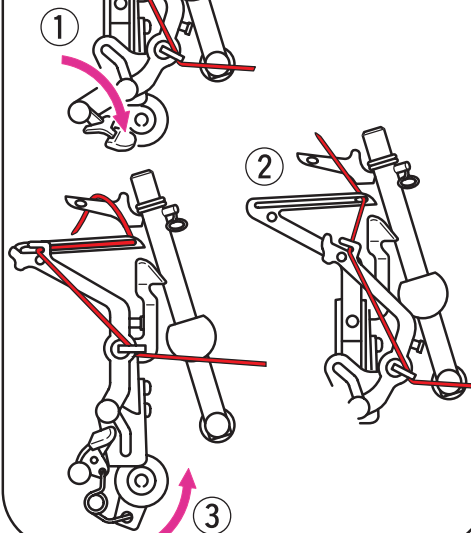


1 Thread upper looper

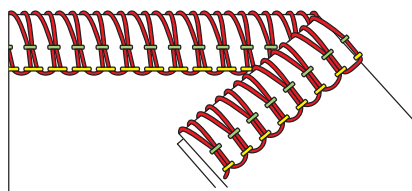


2

Thread lower looper



Threading Chart of 2-needle, 3-thread super stretch

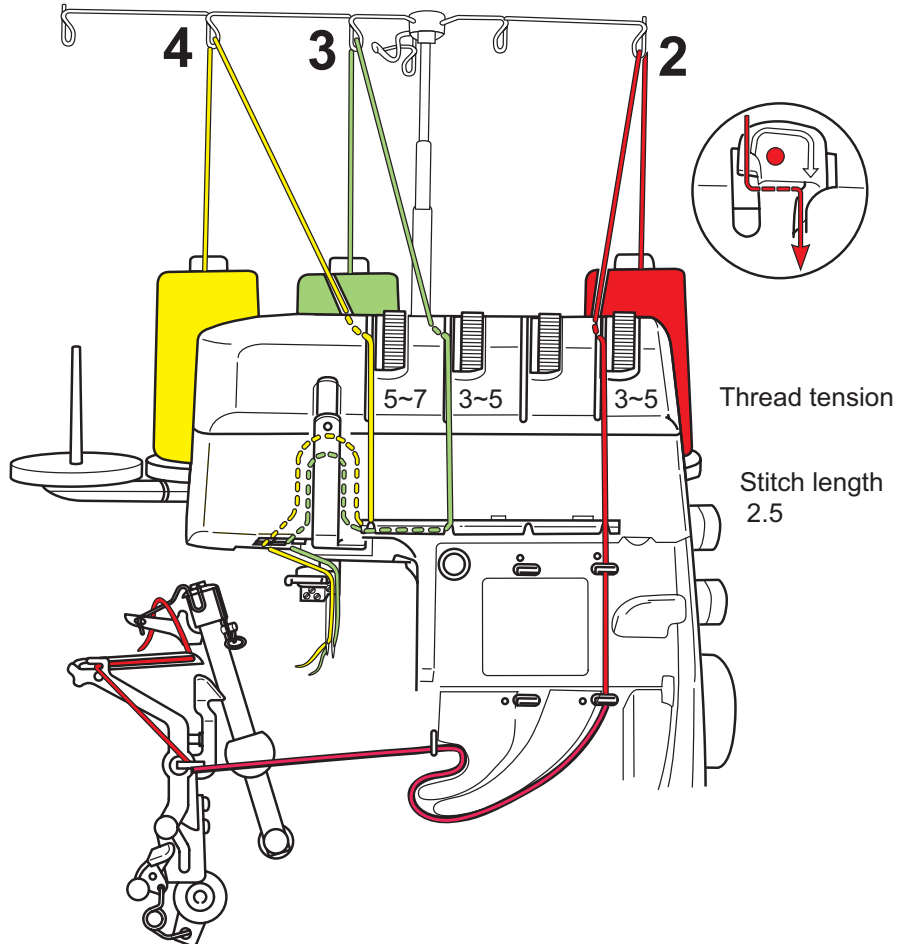
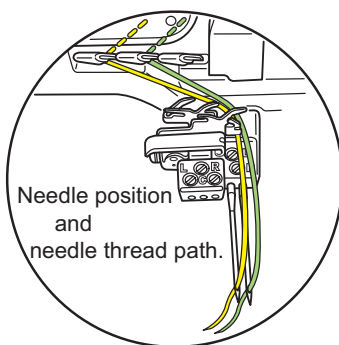
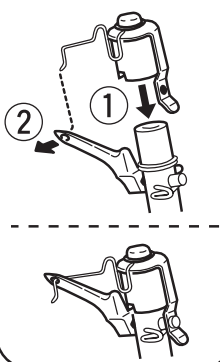


Please thread in
numerical order 2~4.

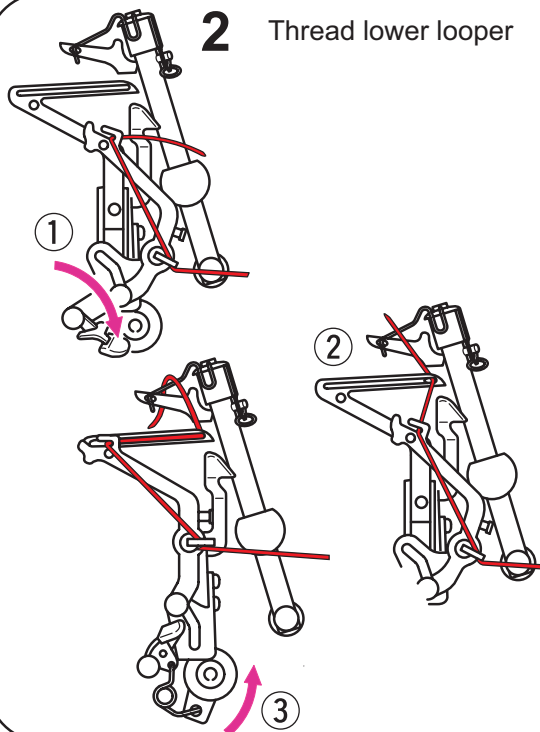
Threading preparations

1. Switch the machine off. (power switch "O")
 2. Pull the release lever forward to activate the upper looper. (Page 44)
 3. Push the button to lower the upper knife arm. (Page 44)
 4. Lower the upper knife. (Page 12)
 5. Attach the knife guard. (Page 45)
- * For more details, please refer to instruction manual.

1 Upper looper converter



2 Thread lower looper



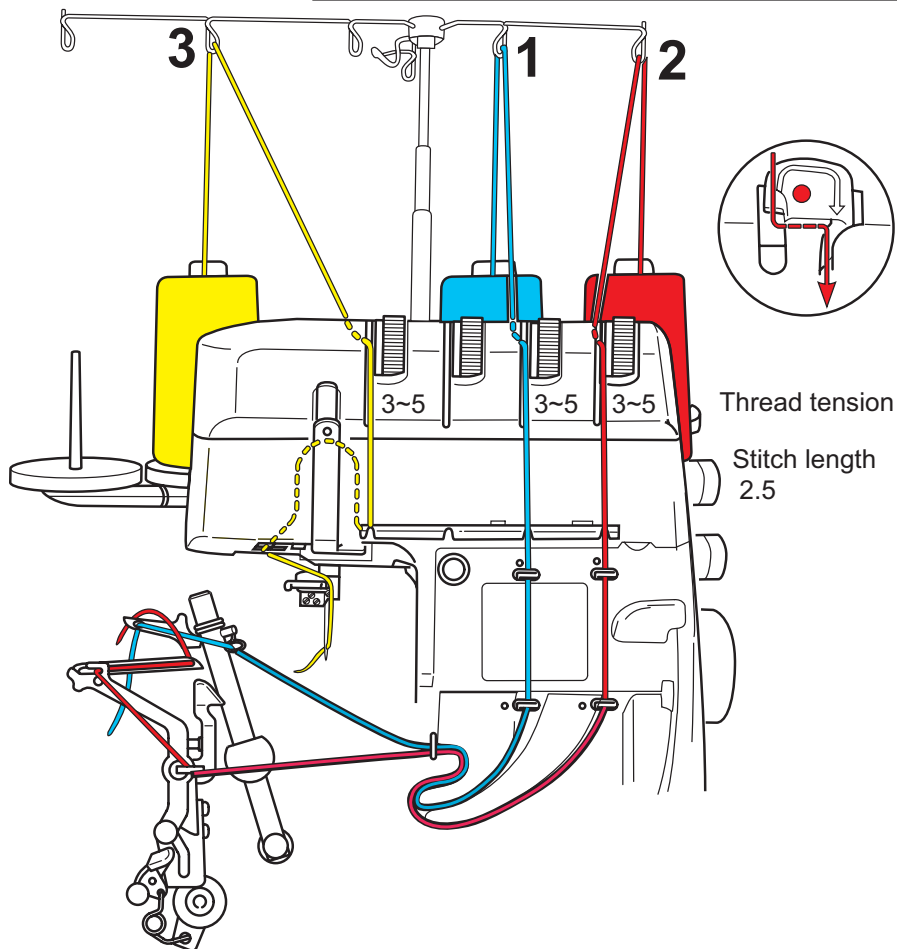
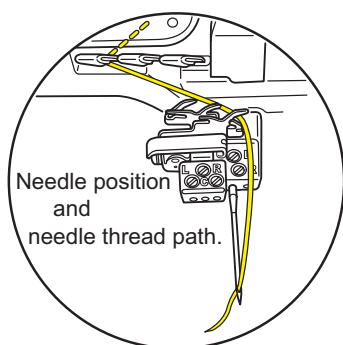
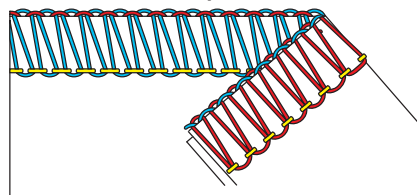
Threading Chart of 1-needle, 3-thread overlock sewing (left needle)

JUKI

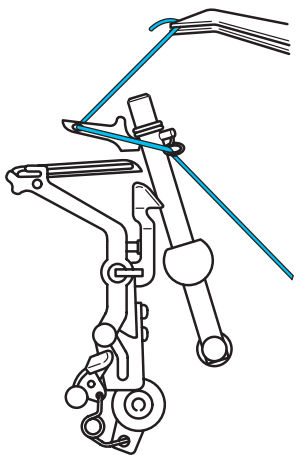
Threading preparations

1. Switch the machine off. (power switch "O")
 2. Pull the release lever forward to activate the upper looper. (Page 44)
 3. Push the button to lower the upper knife arm. (Page 44)
 4. Lower the upper knife. (Page 12)
 5. Attach the knife guard. (Page 45)
- * For more details, please refer to instruction manual.

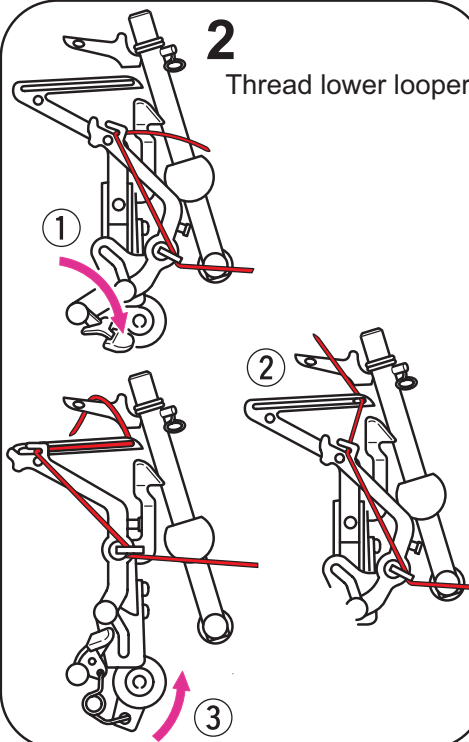
Please thread in
numerical order 1~4.



1 Thread upper looper



2 Thread lower looper

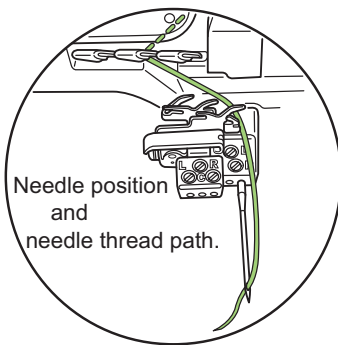
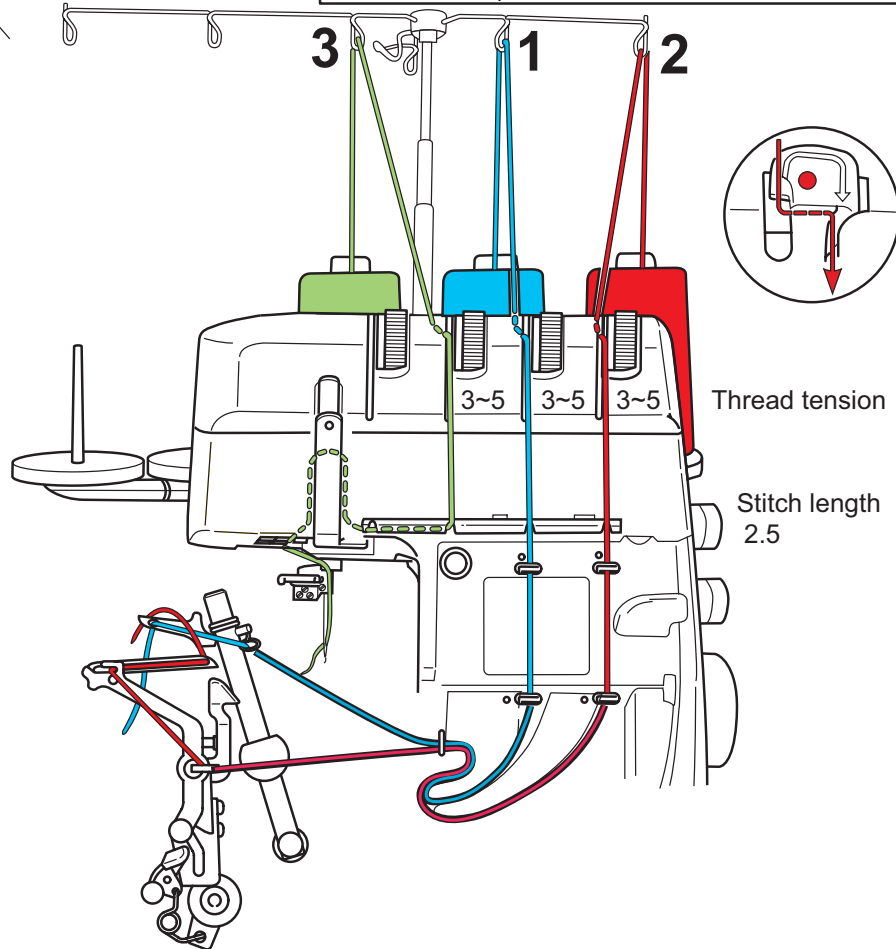
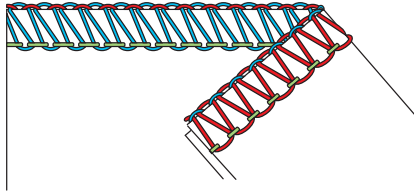


Threading Chart of 1-needle, 3-thread overlock sewing (right needle)

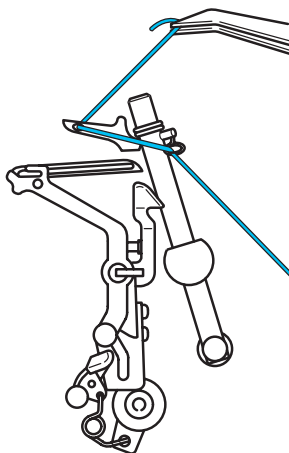
Threading preparations

1. Switch the machine off. (power switch "O")
 2. Pull the release lever forward to activate the upper looper. (Page 44)
 3. Push the button to lower the upper knife arm. (Page 44)
 4. Lower the upper knife. (Page 12)
 5. Attach the knife guard. (Page 45)
- * For more details, please refer to instruction manual.

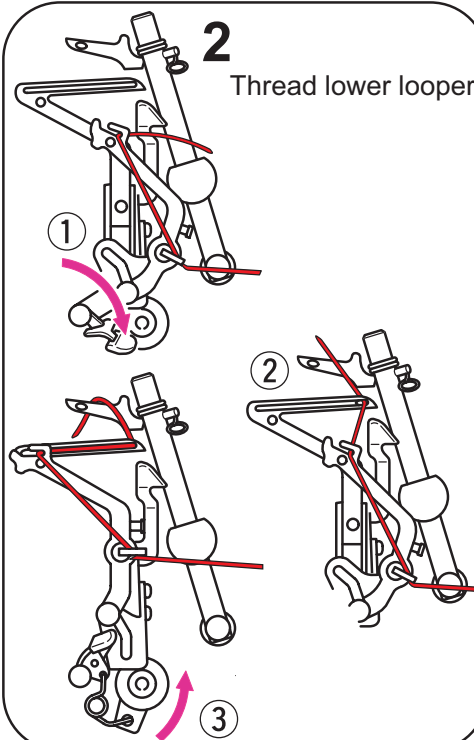
Please thread in
numerical order 1~3.



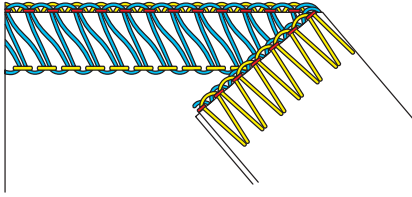
1 Thread upper looper



2 Thread lower looper



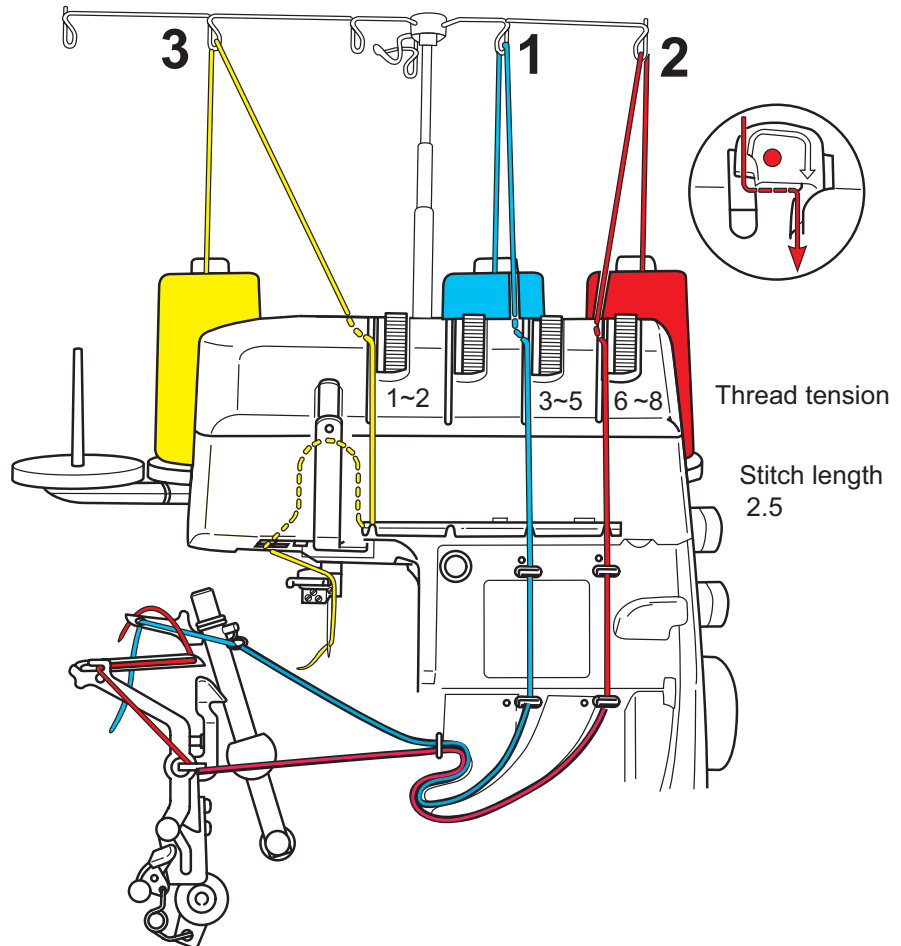
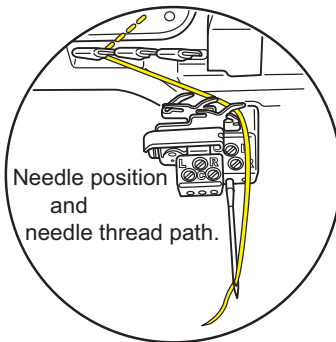
Threading Chart of 1-needle, 3-thread flatlock (left needle)



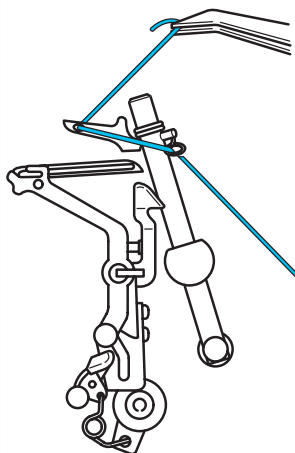
Please thread in
numerical order 1~3.

Threading preparations

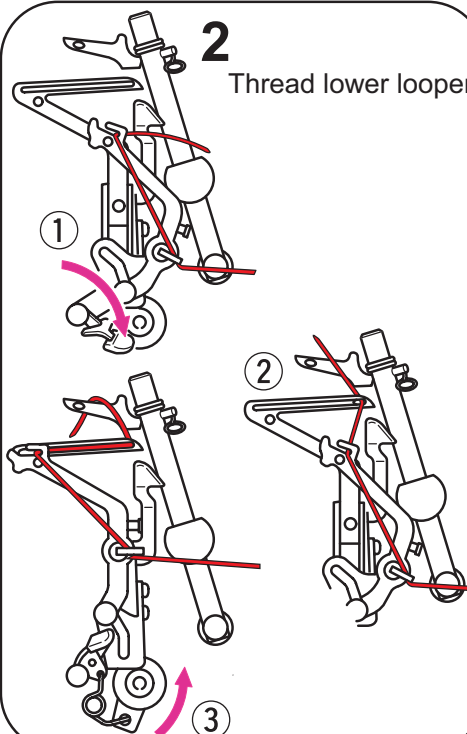
1. Switch the machine off. (power switch "O")
 2. Pull the release lever forward to activate the upper looper. (Page 44)
 3. Push the button to lower the upper knife arm. (Page 44)
 4. Lower the upper knife. (Page 12)
 5. Attach the knife guard. (Page 45)
- * For more details, please refer to instruction manual.



1 Thread upper looper



2 Thread lower looper

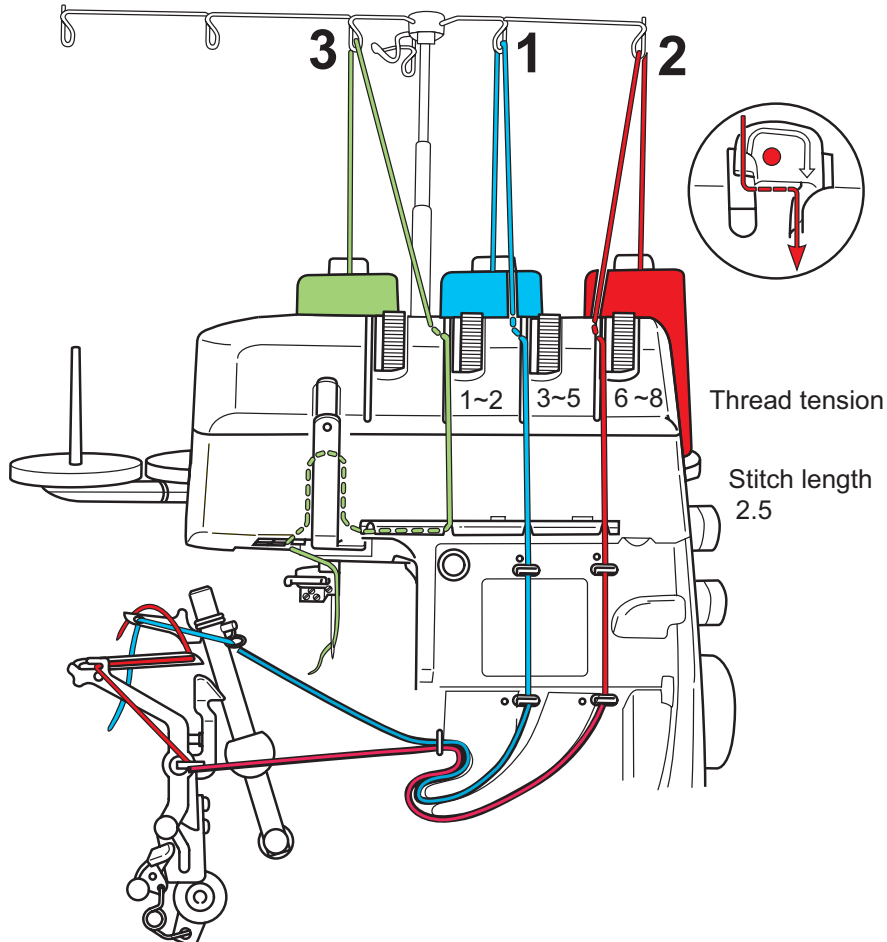
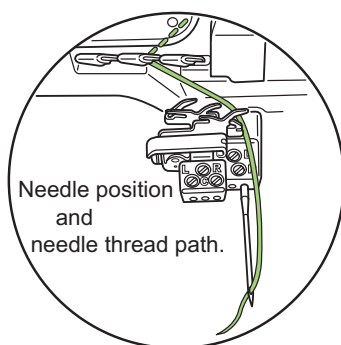
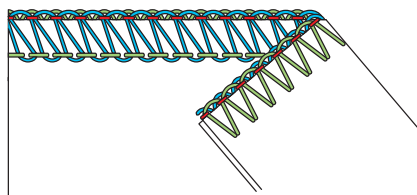


Threading Chart of 1-needle, 3-thread flatlock (right needle)

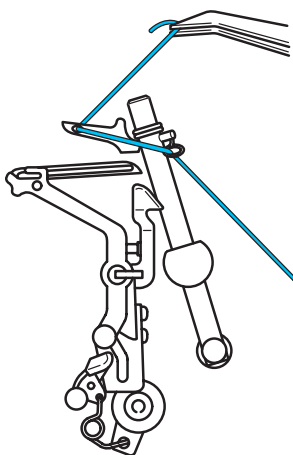
Threading preparations

1. Switch the machine off. (power switch "O")
 2. Pull the release lever forward to activate the upper looper. (Page 44)
 3. Push the button to lower the upper knife arm. (Page 44)
 4. Lower the upper knife. (Page 12)
 5. Attach the knife guard. (Page 45)
- * For more details, please refer to instruction manual.

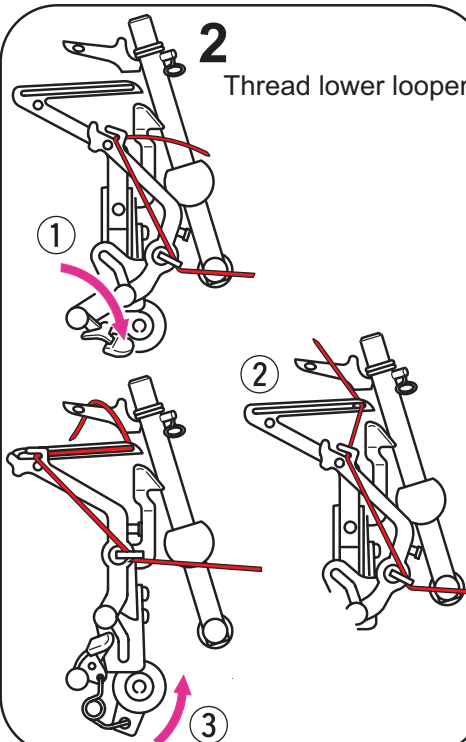
Please thread in
numerical order 1~3.



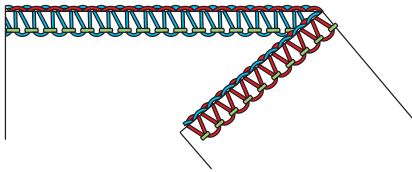
1 Thread upper looper



2 Thread lower looper



Threading Chart of 1-needle, 3-thread narrow seam

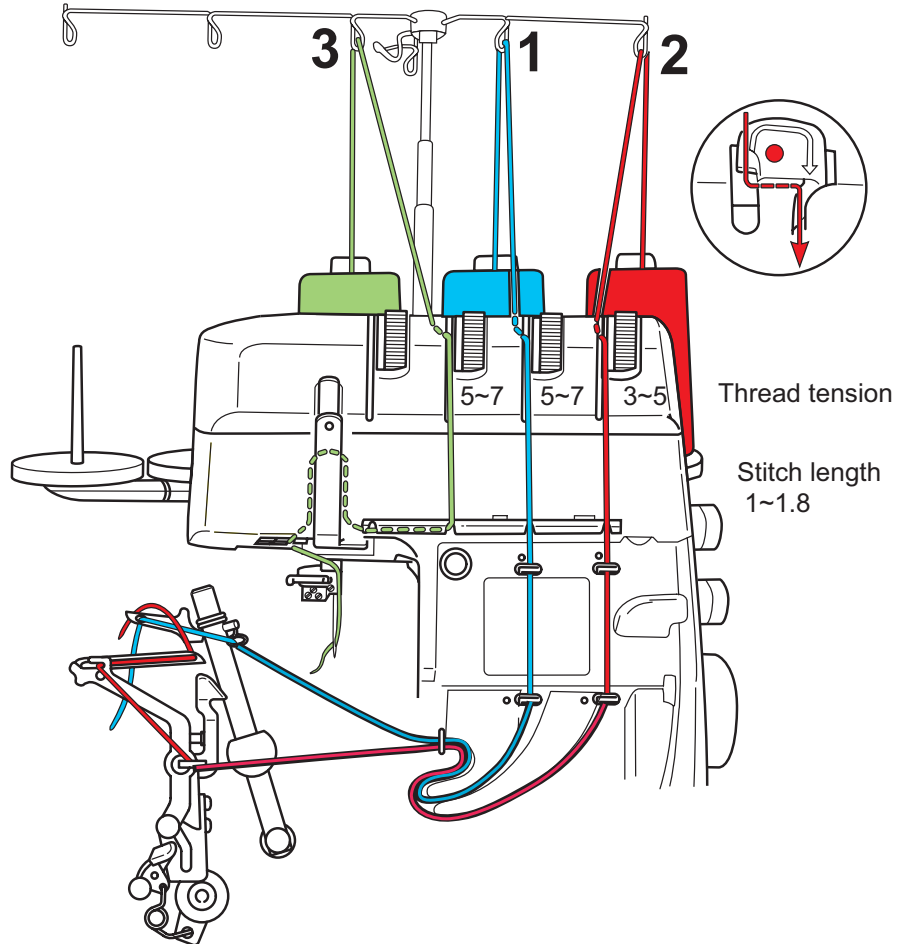
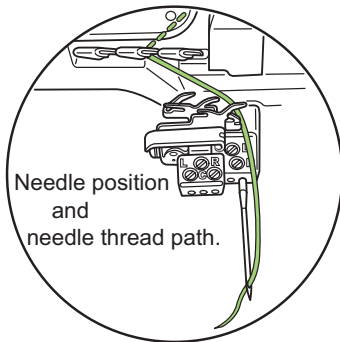


Please thread in
numerical order 1~3.

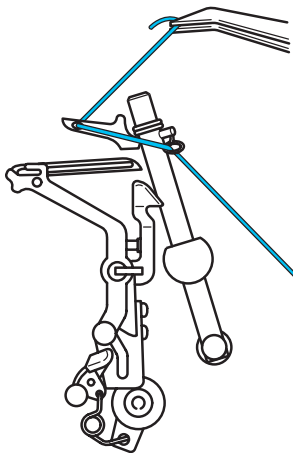
Threading preparations

1. Switch the machine off. (power switch "O")
2. Pull the release lever forward to activate the upper looper. (Page 44)
3. Push the button to lower the upper knife arm. (Page 44)
4. Lower the upper knife. (Page 12)
5. Attach the knife guard. (Page 45)

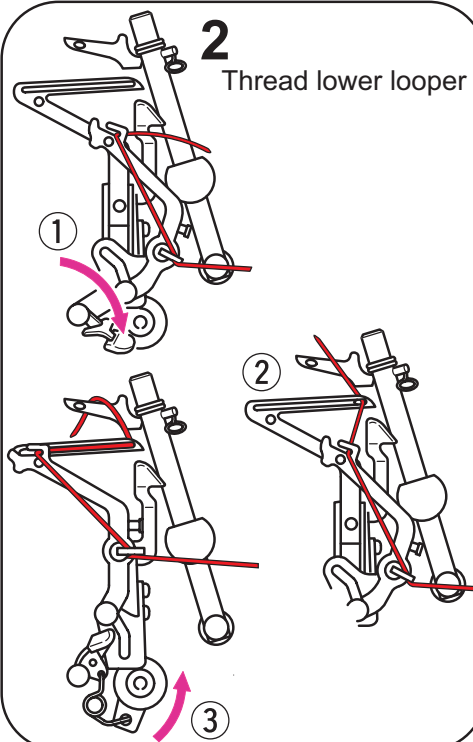
* For more details, please refer to instruction manual.



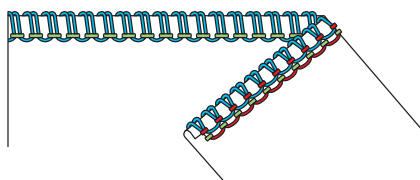
1 Thread upper looper



2 Thread lower looper



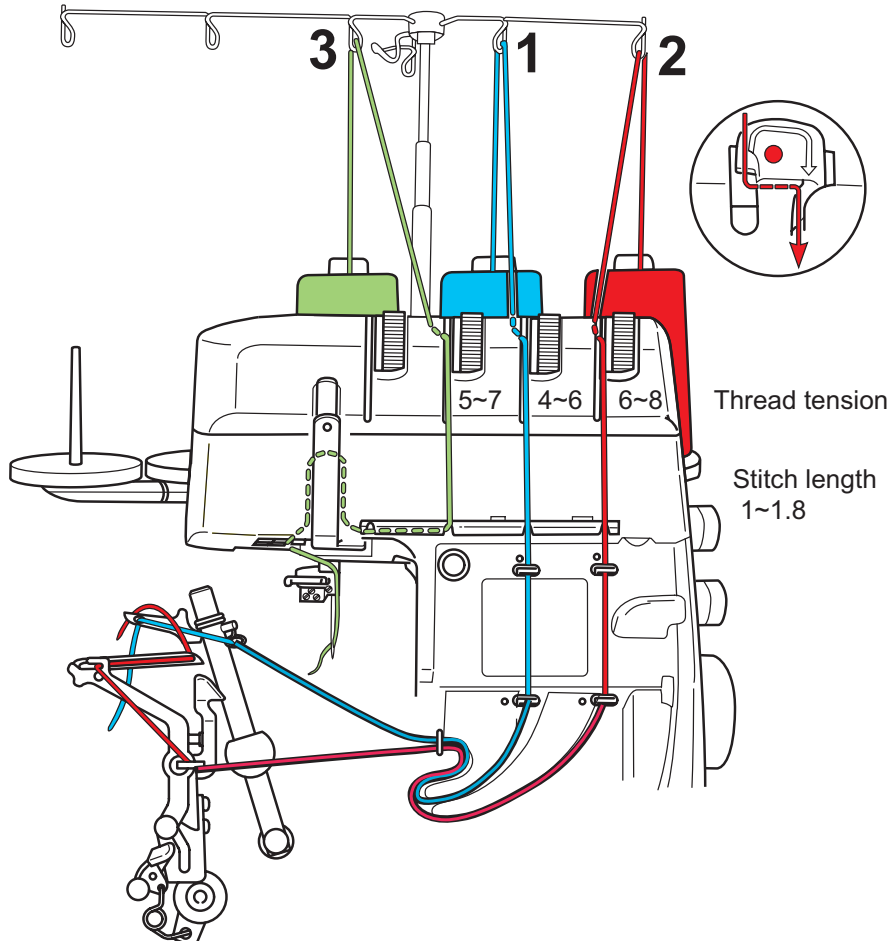
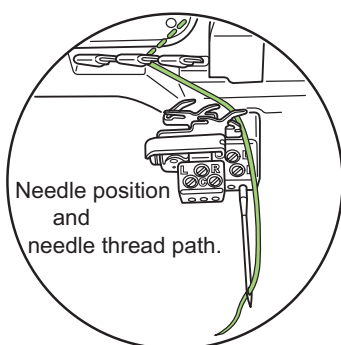
Threading Chart of 1-needle, 3-thread roll hem



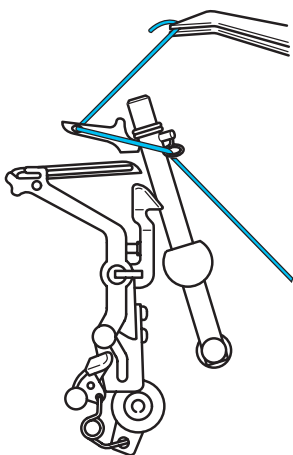
Please thread in
numerical order 1~3.

Threading preparations

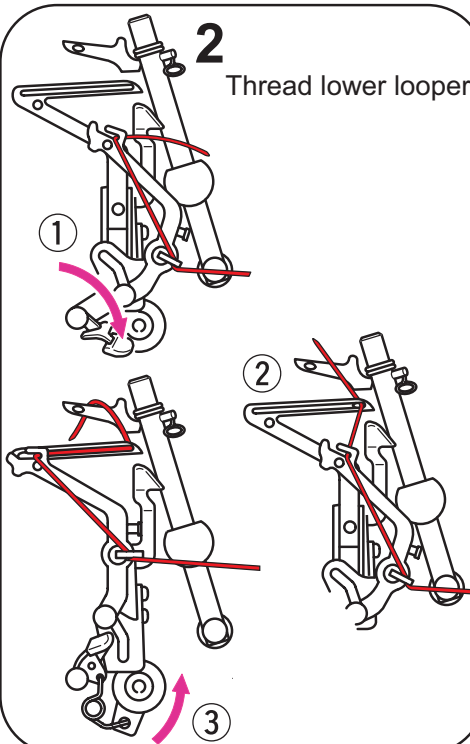
1. Switch the machine off. (power switch "O")
 2. Pull the release lever forward to activate the upper looper. (Page 44)
 3. Push the button to lower the upper knife arm. (Page 44)
 4. Lower the upper knife. (Page 12)
 5. Pull selection lever to the front marking on the stitch plate. (Page 21)
 6. Attach the knife guard. (See page 45)
- * For more details, please refer to instruction manual.



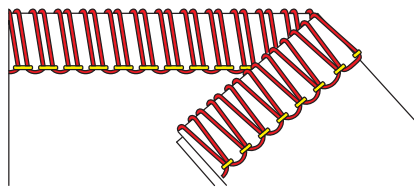
1 Thread upper looper



2 Thread lower looper



Threading Chart of 1-needle, 2-thread wrapped overlock sewing (left needle)

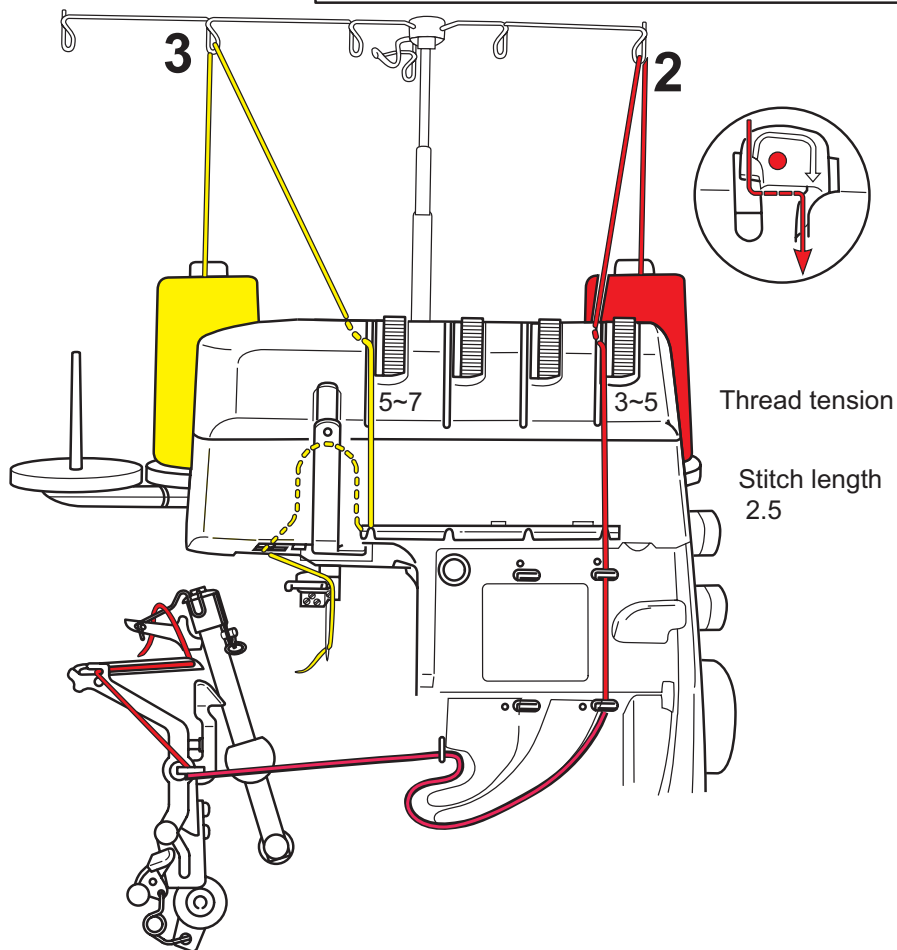
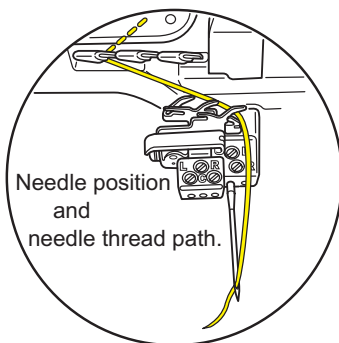
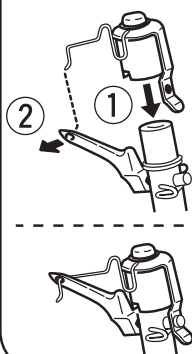


Please thread in
numerical order 2~3.

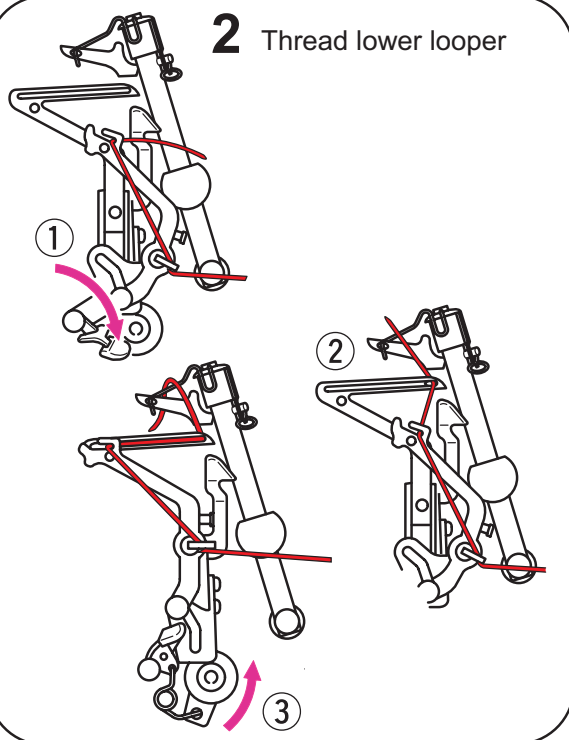
Threading preparations

1. Switch the machine off. (power switch "O")
 2. Pull the release lever forward to activate the upper looper. (Page 44)
 3. Push the button to lower the upper knife arm. (Page 44)
 4. Lower the upper knife. (Page 12)
 5. Attach the knife guard. (Page 45)
- * For more details, please refer to instruction manual.

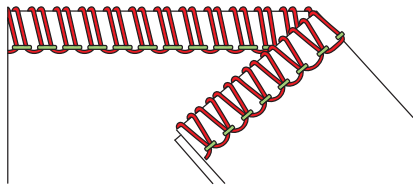
1 Upper looper converter



2 Thread lower looper



Threading Chart of 1-needle, 2-thread wrapped overlock (right needle)

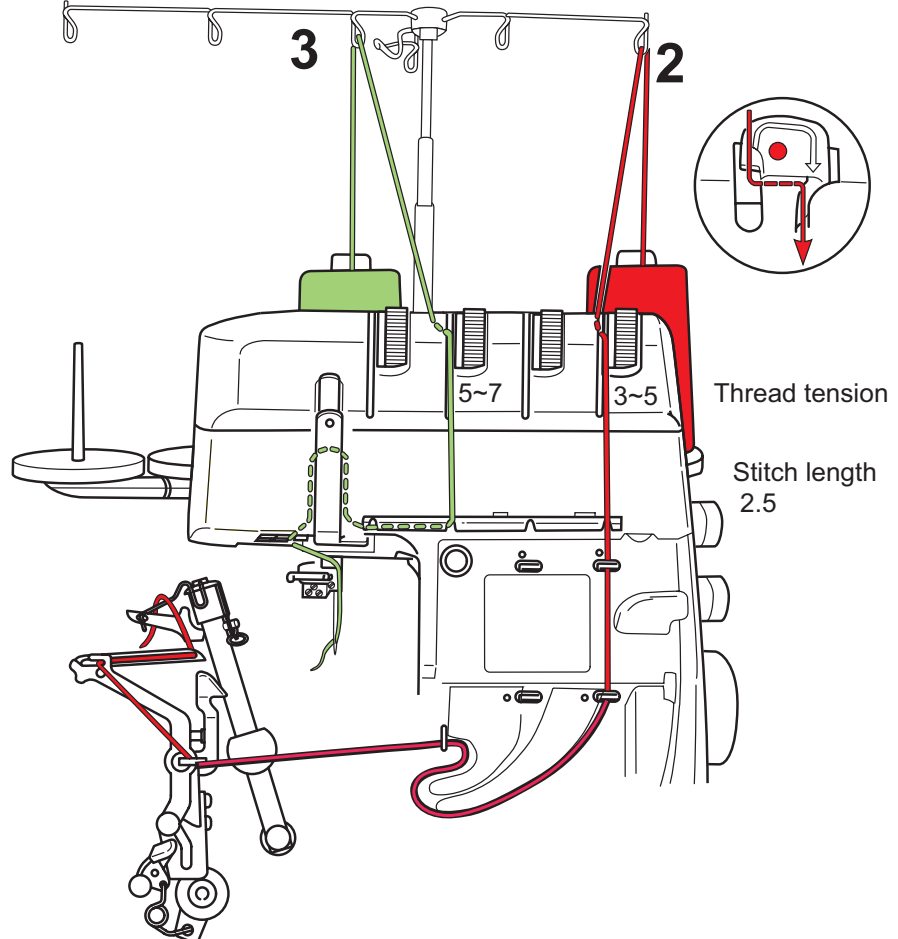
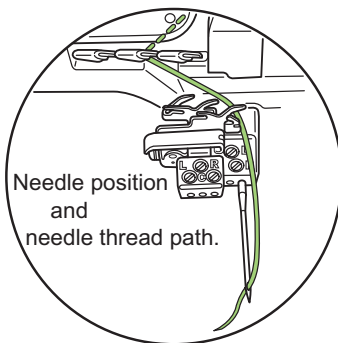
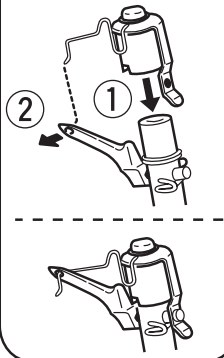


Please thread in
numerical order 2~3.

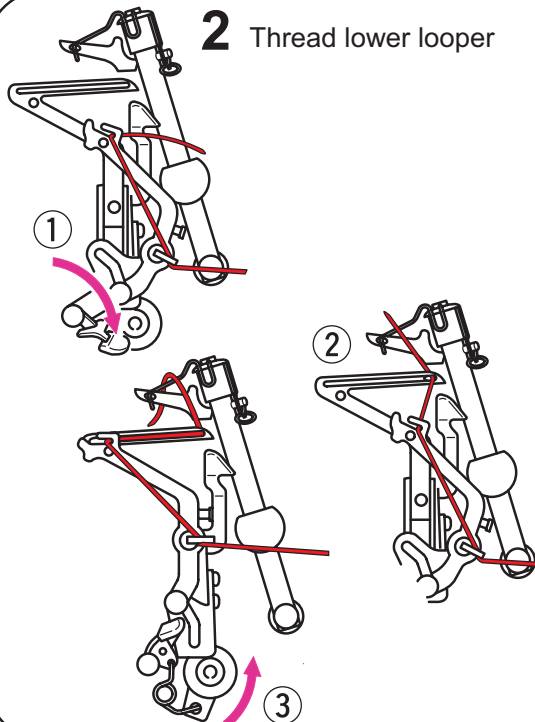
Threading preparations

1. Switch the machine off. (power switch "O")
 2. Pull the release lever forward to activate the upper looper. (Page 44)
 3. Push the button to lower the upper knife arm. (Page 44)
 4. Lower the upper knife. (Page 12)
 5. Attach the knife guard. (Page 45)
- * For more details, please refer to instruction manual.

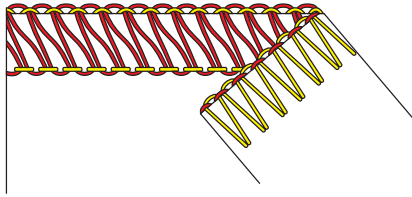
1 Upper looper converter



2 Thread lower looper



Threading Chart of 1-needle, 2-thread flatlock (left needle)

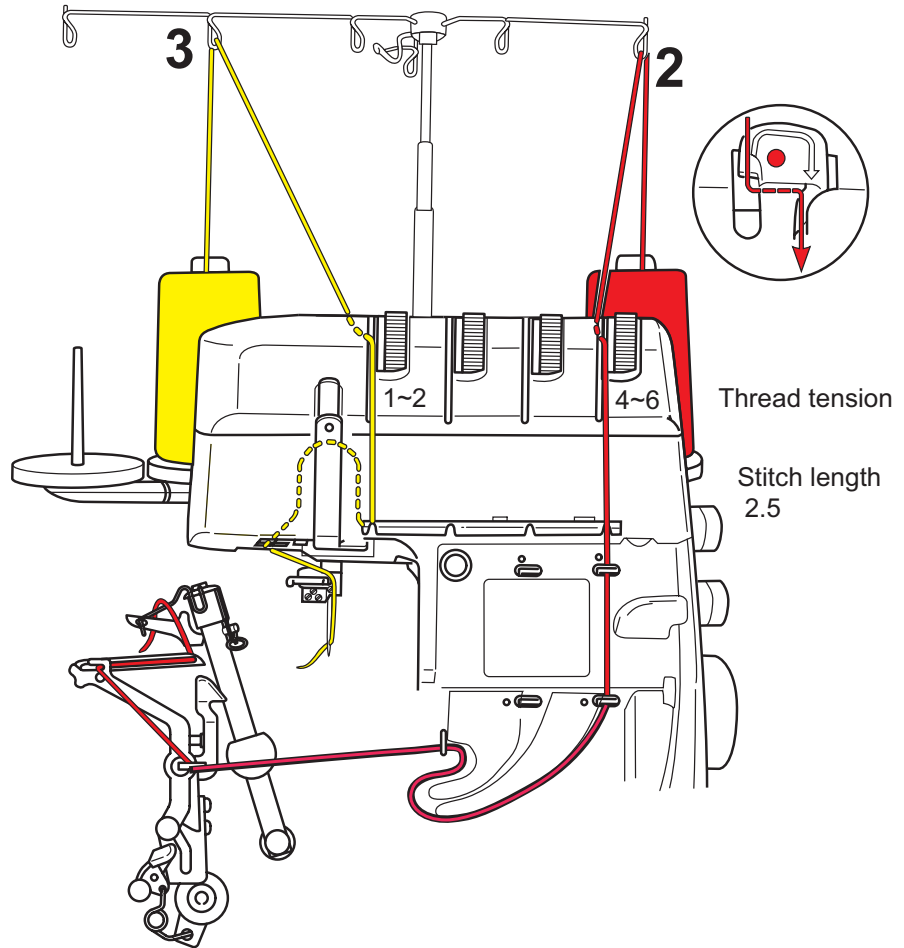
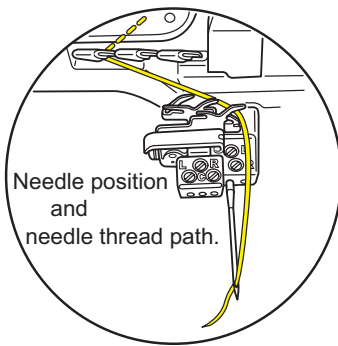
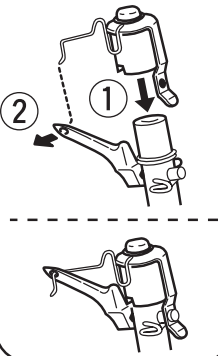


Please thread in
numerical order 2~3.

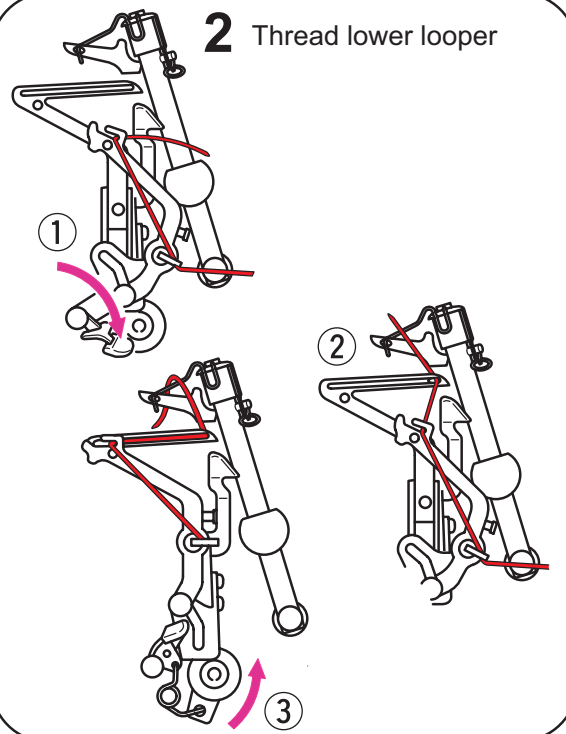
Threading preparations

1. Switch the machine off. (power switch "O")
 2. Pull the release lever forward to activate the upper looper. (Page 44)
 3. Push the button to lower the upper knife arm. (Page 44)
 4. Lower the upper knife. (Page 12)
 5. Attach the knife guard. (Page 45)
- * For more details, please refer to instruction manual.

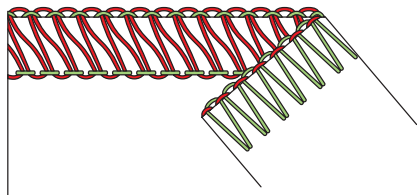
1 Upper looper converter



2 Thread lower looper



Threading Chart of 1-needle, 2-thread flatlock (right needle)

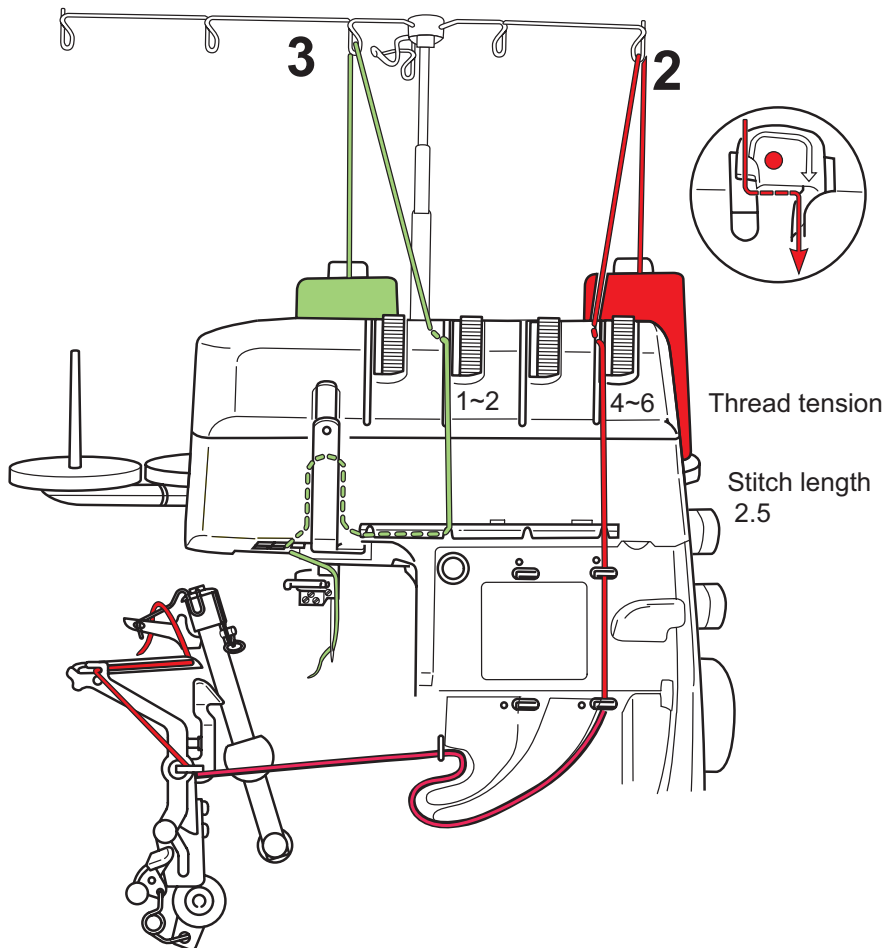
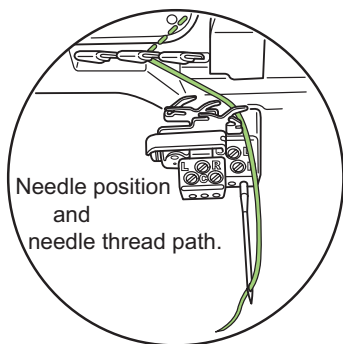
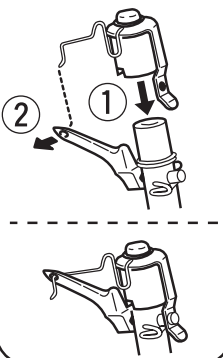


Please thread in
numerical order 2~3.

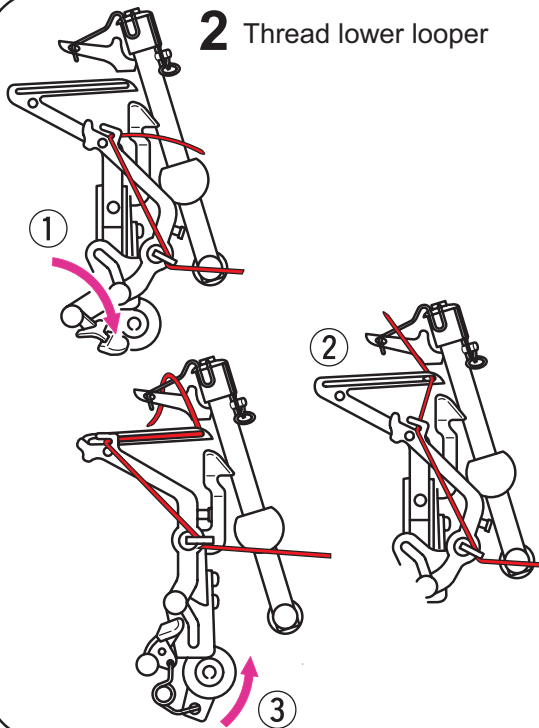
Threading preparations

1. Switch the machine off. (power switch "O")
 2. Pull the release lever forward to activate the upper looper. (Page 44)
 3. Push the button to lower the upper knife arm. (Page 44)
 4. Lower the upper knife. (Page 12)
 5. Attach the knife guard. (Page 45)
- * For more details, please refer to instruction manual.

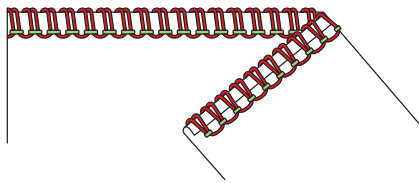
1 Upper looper converter



2 Thread lower looper



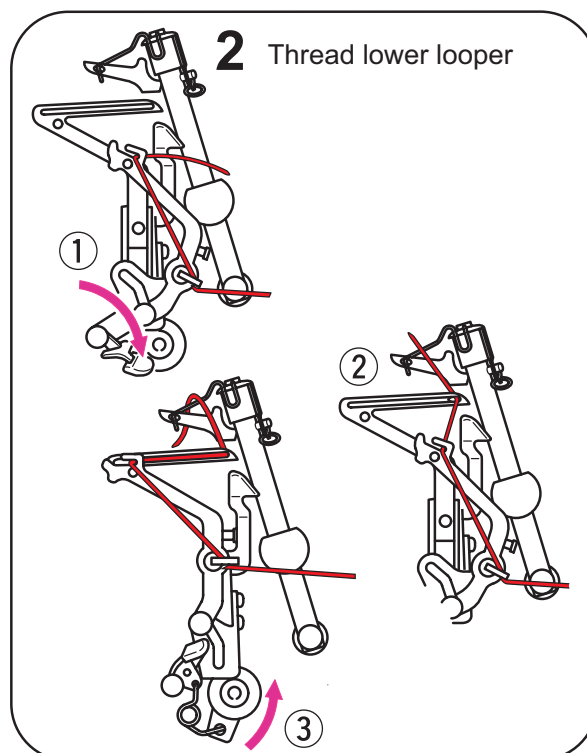
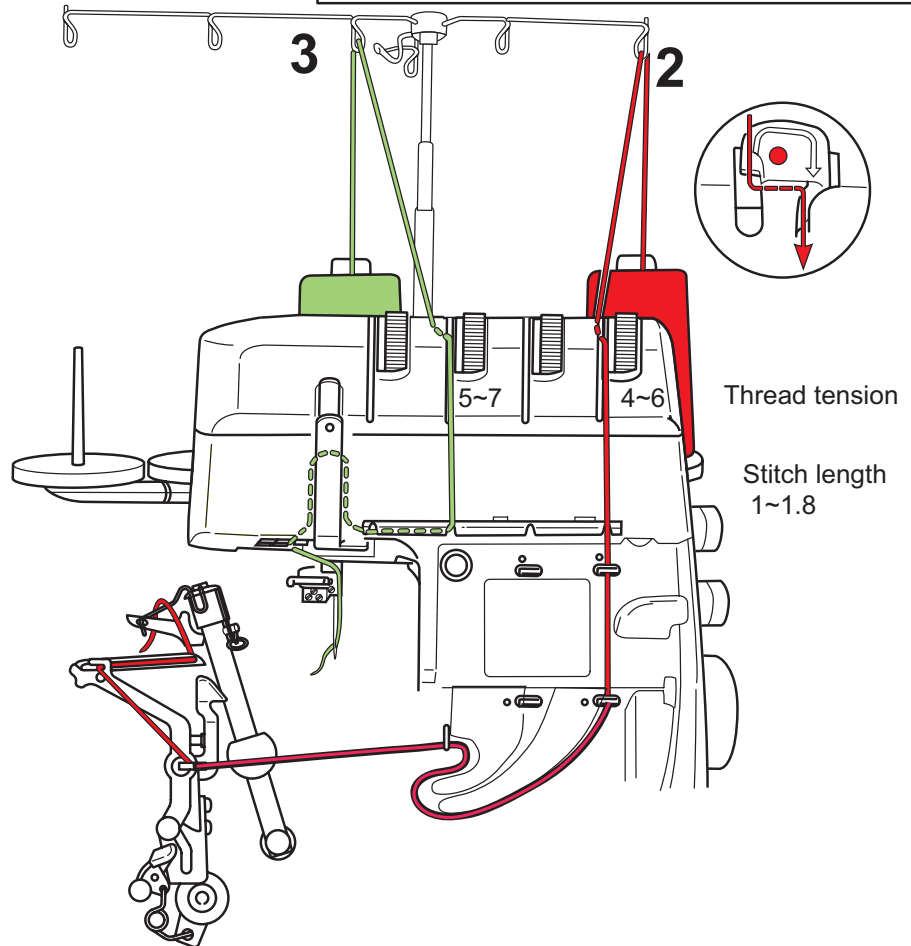
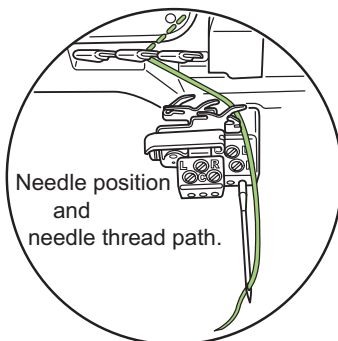
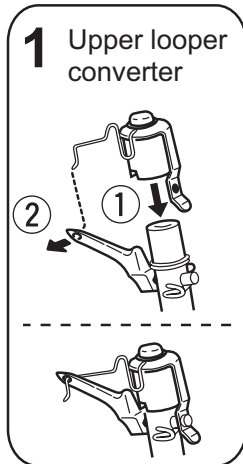
Threading Chart of 1-needle, 2-thread roll hem



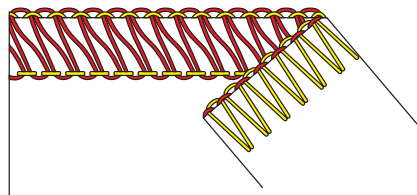
Threading preparations

1. Switch the machine off. (power switch "O")
 2. Pull the release lever forward to activate the upper looper. (Page 44)
 3. Push the button to lower the upper knife arm. (Page 44)
 4. Lower the upper knife. (Page 12)
 5. Pull selection lever to the front marking on the stitch plate. (Page 21)
 6. Attach the knife guard. (See page 45)
- * For more details, please refer to instruction manual.

numerical order 2~3.



Threading Chart of 1-needle, 2-thread overlock (left needle)



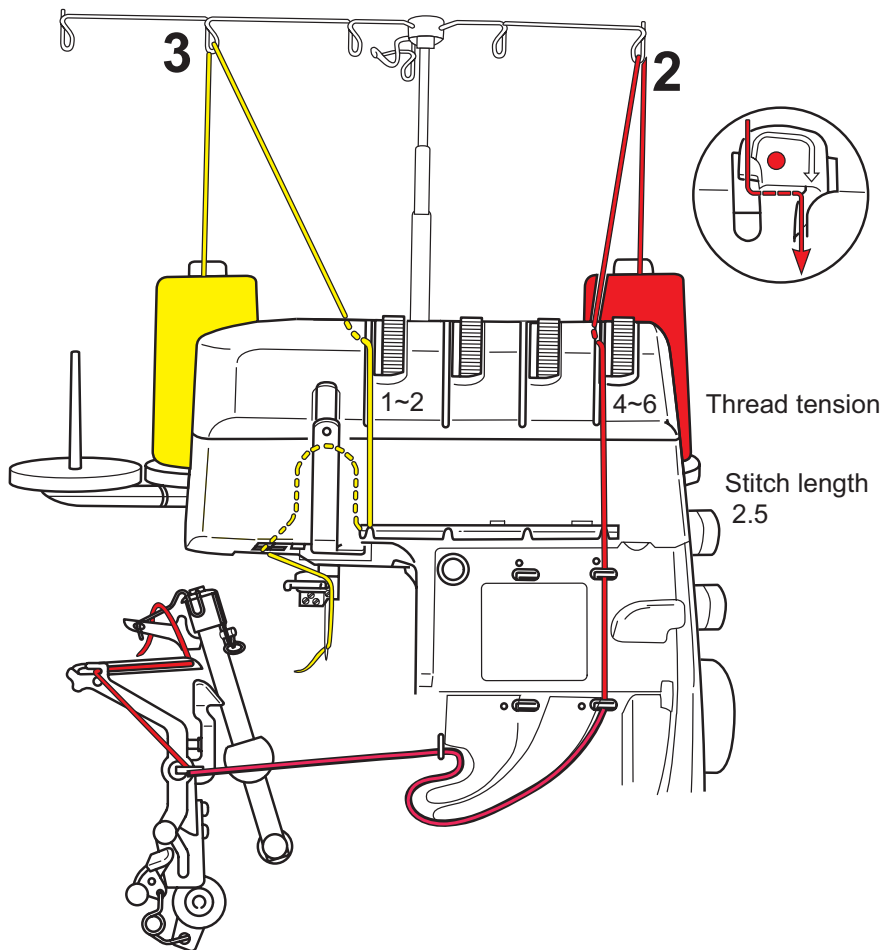
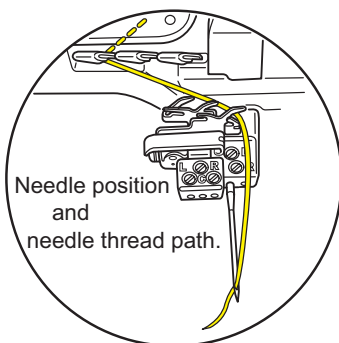
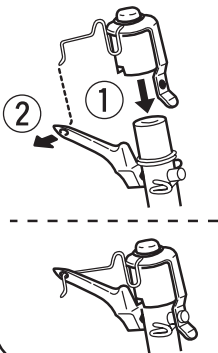
Please thread in
numerical order 2~3.

Threading preparations

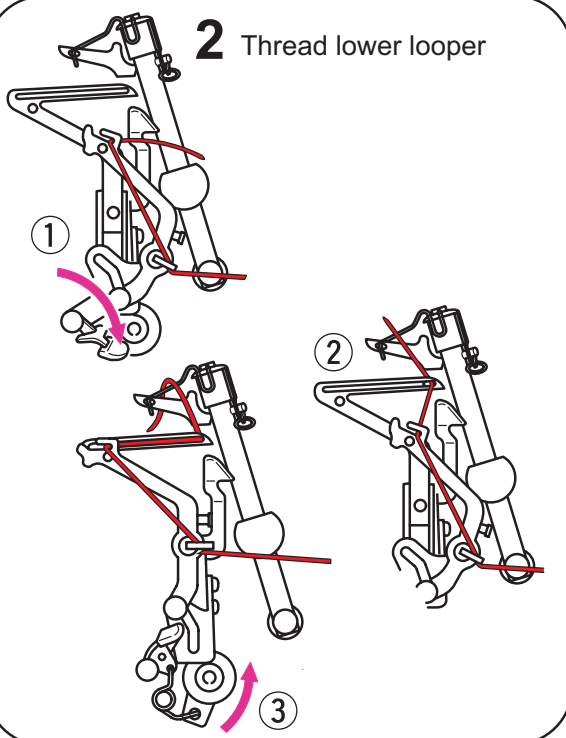
1. Switch the machine off. (power switch "O")
2. Pull the release lever forward to activate the upper looper. (Page 44)
3. Push the button to lower the upper knife arm. (Page 44)
4. Lower the upper knife. (Page 12)
5. Attach the knife guard. (Page 45)

* For more details, please refer to instruction manual.

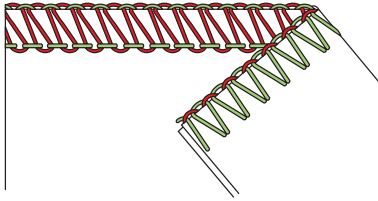
1 Upper looper converter



2 Thread lower looper



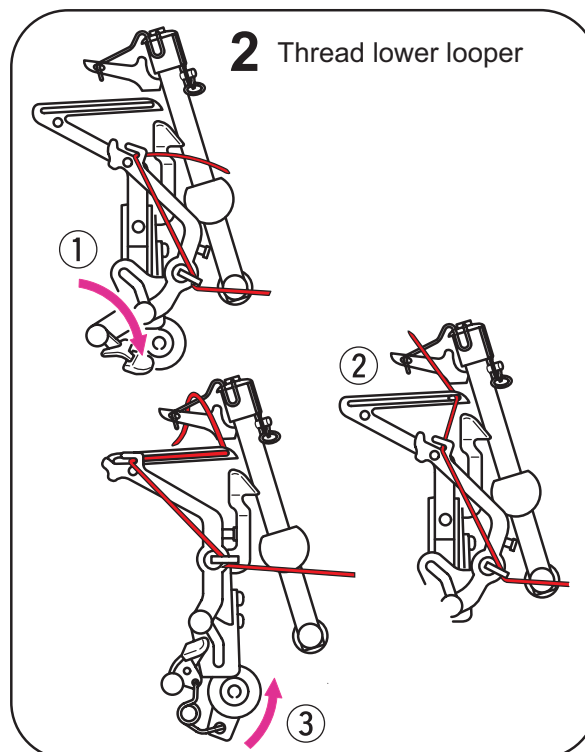
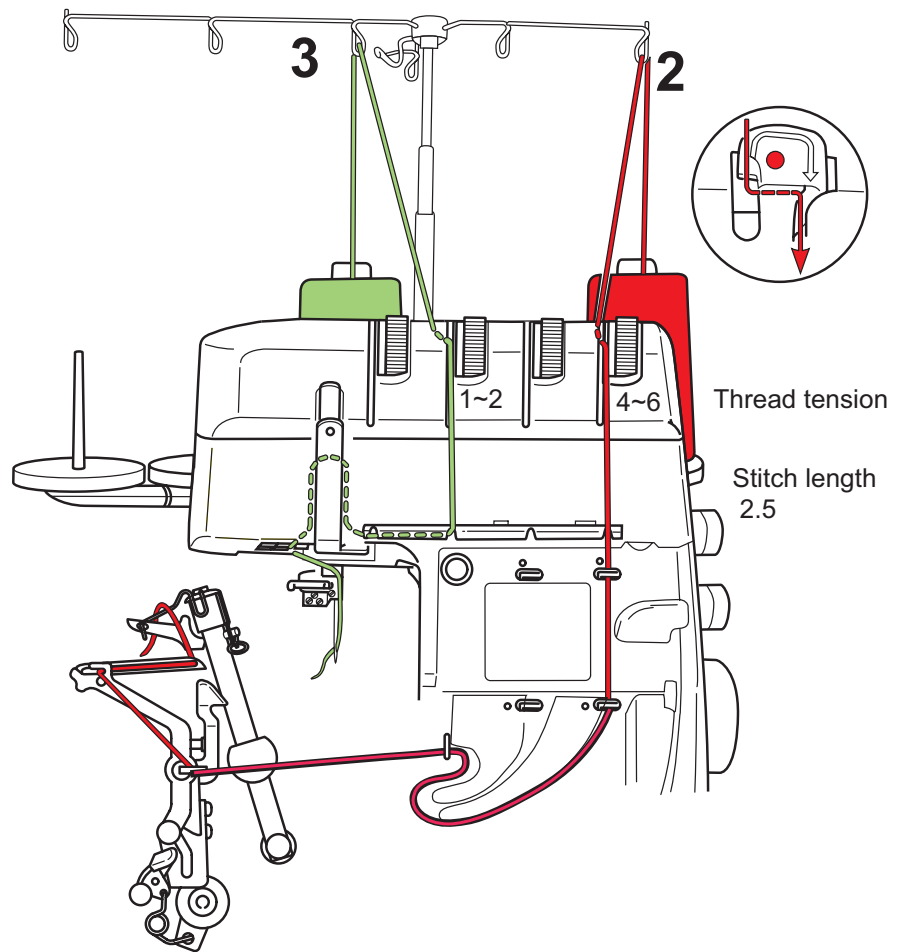
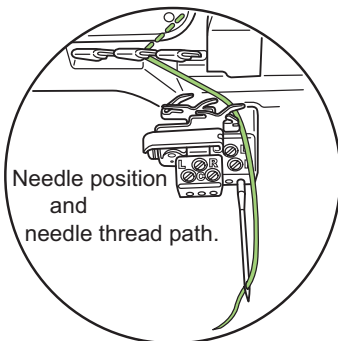
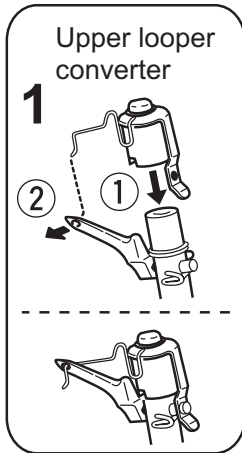
Threading Chart of 1-needle, 2-thread overlock (right needle)



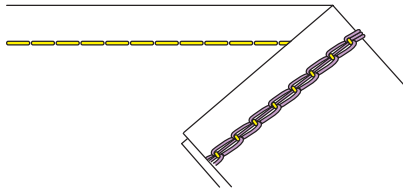
Please thread in
numerical order 2~3.

Threading preparations

1. Switch the machine off. (power switch "O")
 2. Pull the release lever forward to activate the upper looper. (Page 44)
 3. Push the button to lower the upper knife arm. (Page 44)
 4. Lower the upper knife. (Page 12)
 5. Attach the knife guard. (Page 45)
- * For more details, please refer to instruction manual.



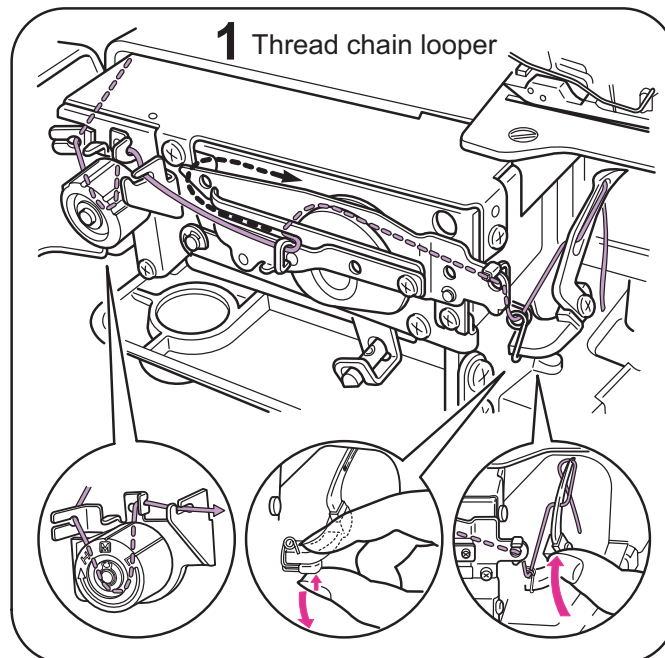
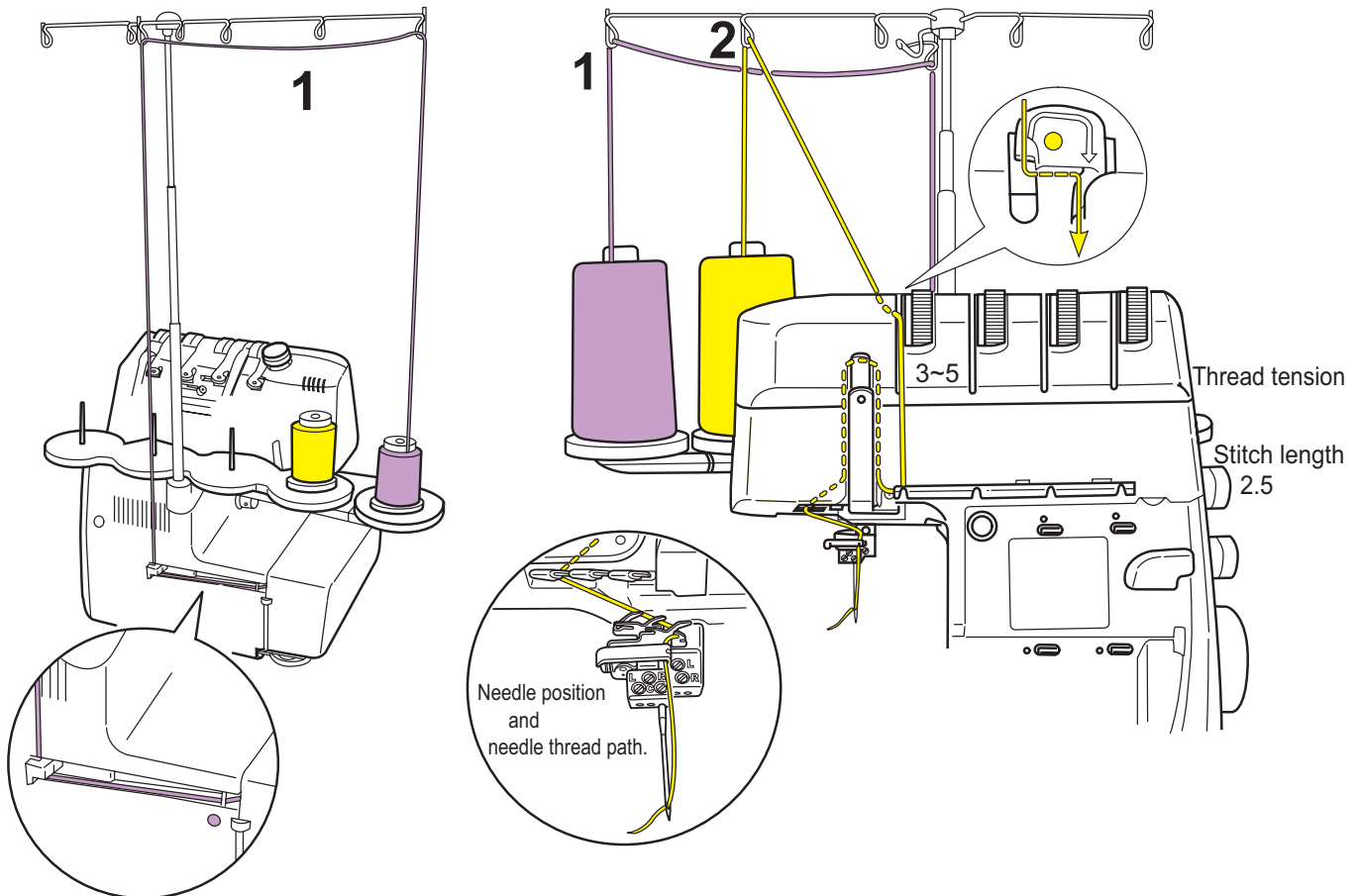
Threading Chart of Chain Stitch



Threading preparations

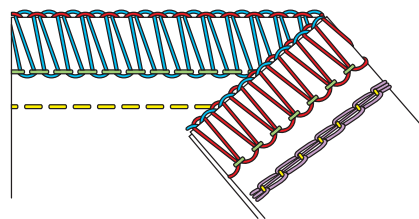
1. Switch the machine off. (power switch "O")
 2. Press release lever back to deactivate the upper looper. (Page 44)
 3. Raise the upper knife. (Page 12)
 4. Pull the lever and raise the upper knife arm. (Page 44)
 5. Attach the extension plate. (Page 45)
- * For more details, please refer to instruction manual.

Please thread in
numerical order 1~2.



Threading Chart of Interlock

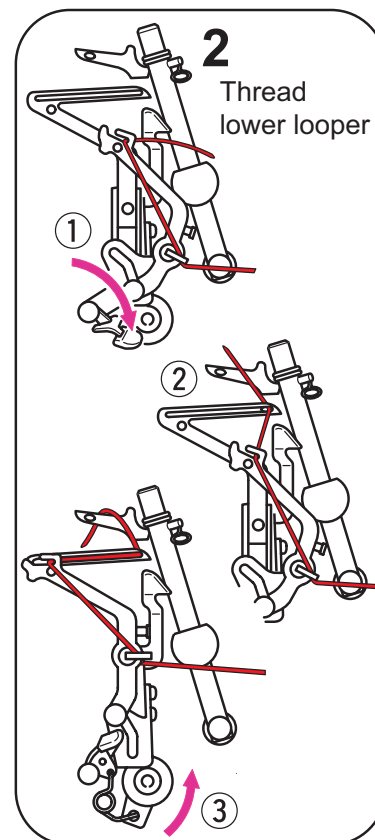
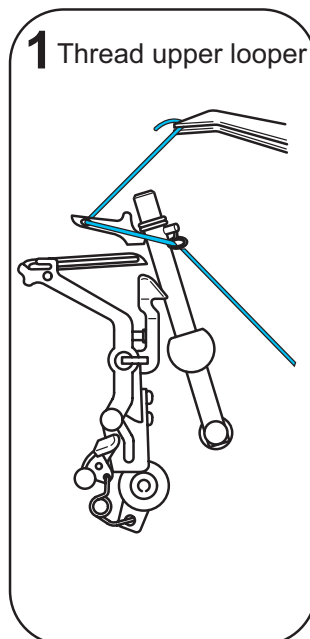
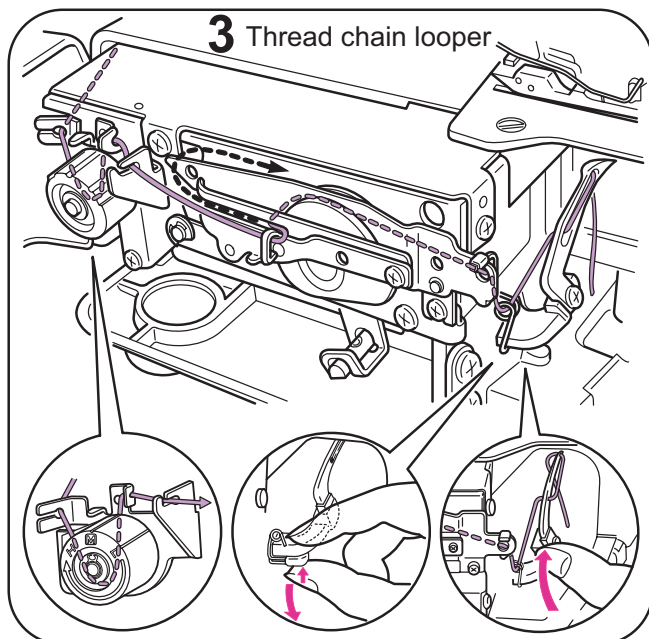
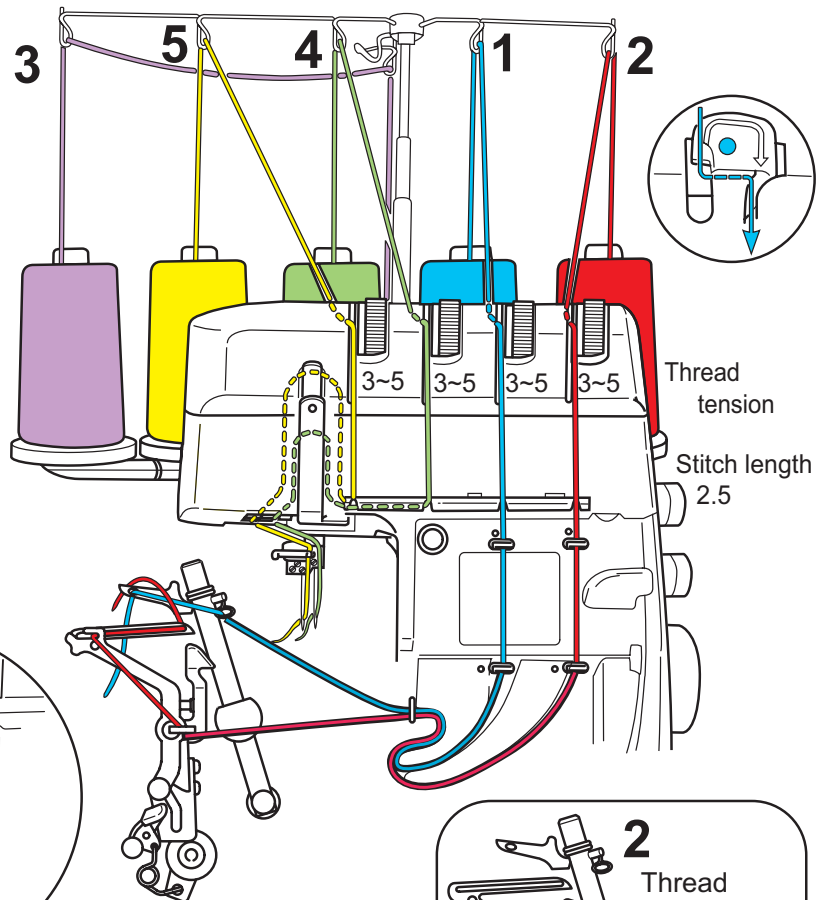
[1-left needle, 3-thread overlook and chain stitch]



Please thread in numerical order 1~5.

Threading preparations

1. Switch the machine off. (power switch "O")
 2. Pull the release lever forward to activate the upper looper. (Page 44)
 3. Push the button to lower the upper knife arm. (Page 44)
 4. Lower the upper knife. (Page 12)
 5. Attach the knife guard. (Page 45)
- * For more details, please refer to instruction manual.



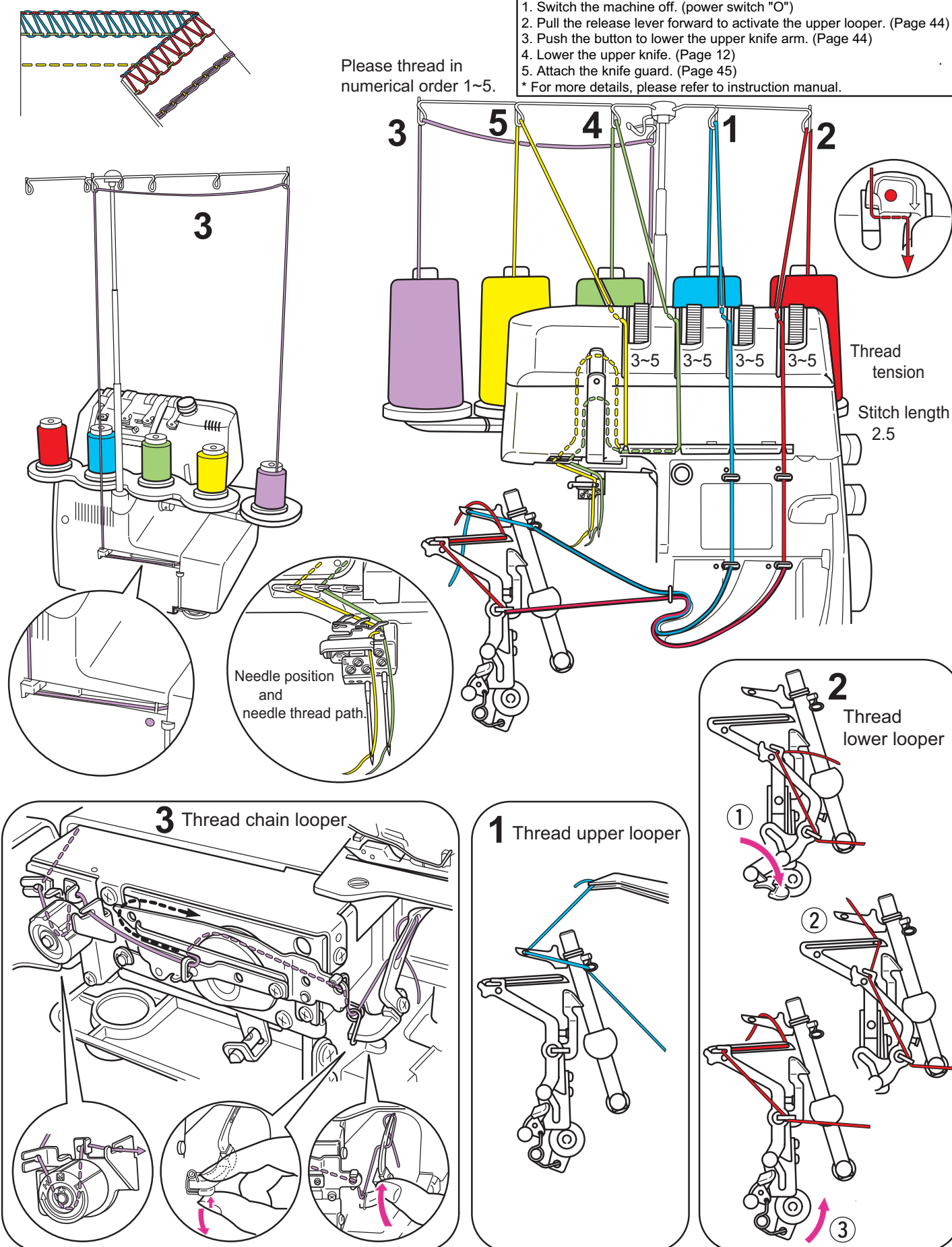
Threading Chart of Interlock

[1-right needle, 3-thread overlock and chain stitch]

Threading preparations

1. Switch the machine off. (power switch "O")
 2. Pull the release lever forward to activate the upper looper. (Page 44)
 3. Push the button to lower the upper knife arm. (Page 44)
 4. Lower the upper knife. (Page 12)
 5. Attach the knife guard. (Page 45)
- * For more details, please refer to instruction manual.

Please thread in numerical order 1~5.



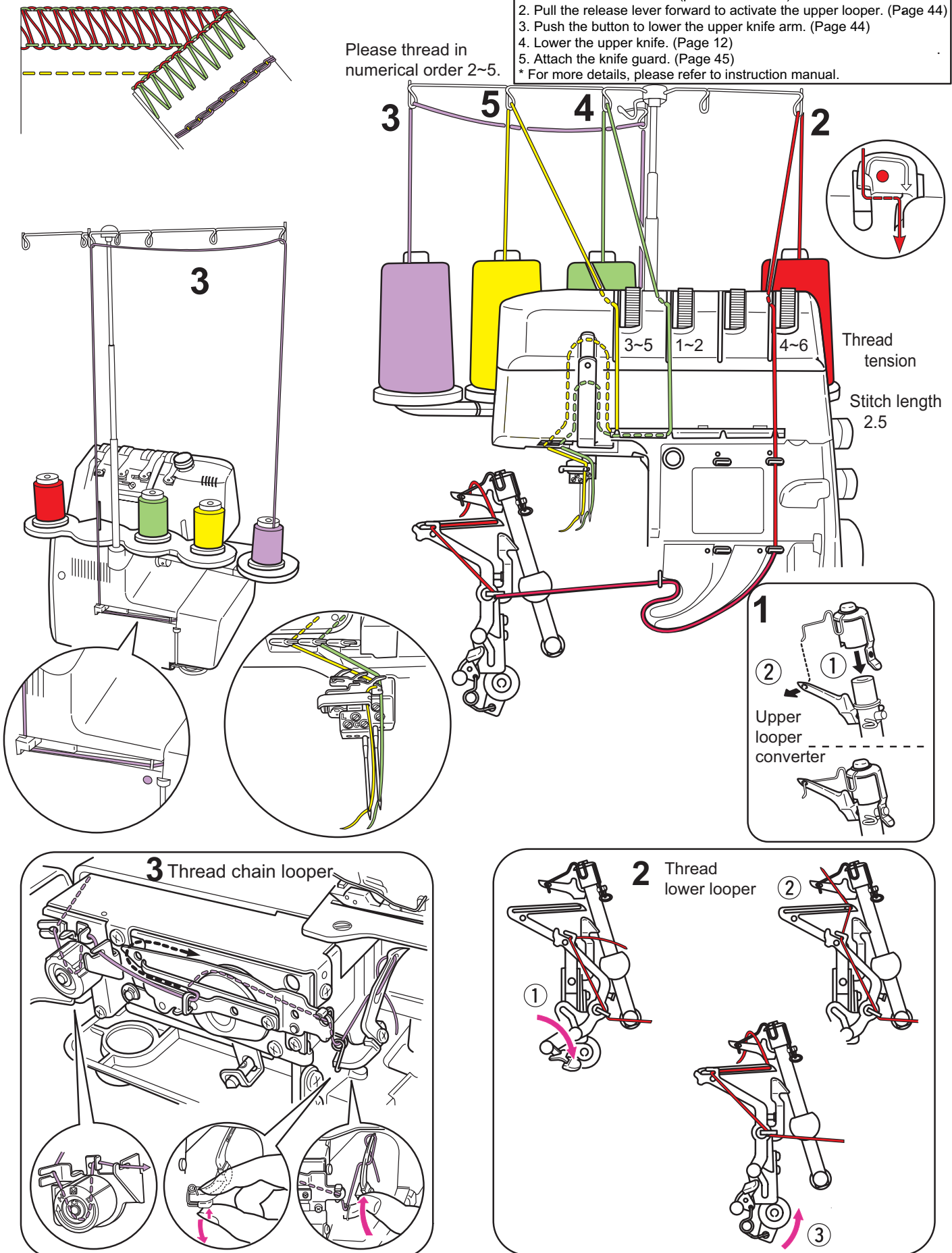
Threading Chart of Interlock

[1-left needle, 2-thread overlock and chain stitch]

Threading preparations

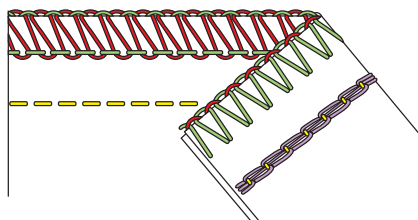
1. Switch the machine off. (power switch "O")
 2. Pull the release lever forward to activate the upper looper. (Page 44)
 3. Push the button to lower the upper knife arm. (Page 44)
 4. Lower the upper knife. (Page 12)
 5. Attach the knife guard. (Page 45)
- * For more details, please refer to instruction manual.

Please thread in numerical order 2~5.



Threading Chart of Interlock

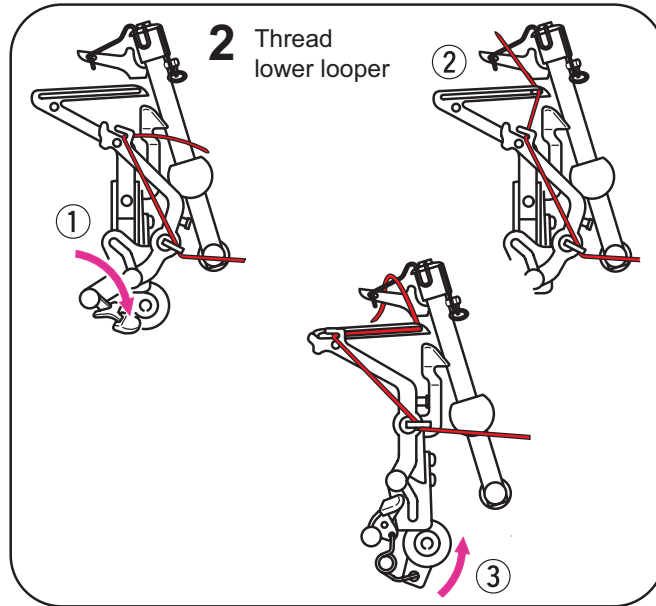
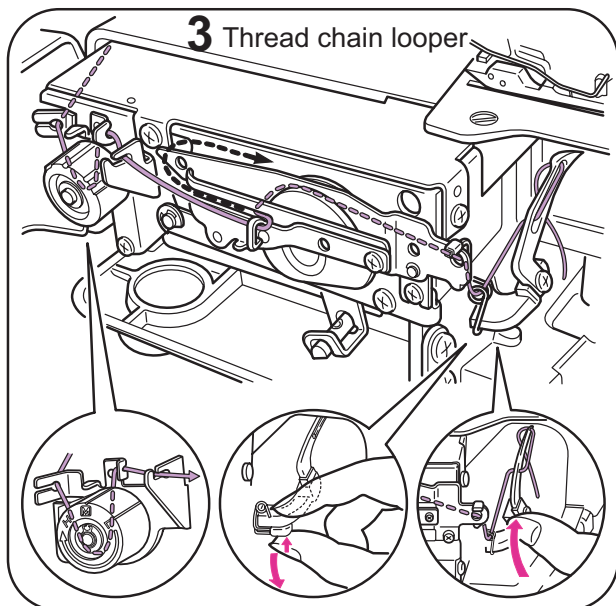
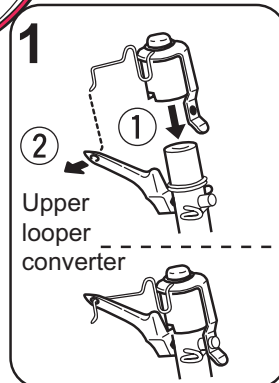
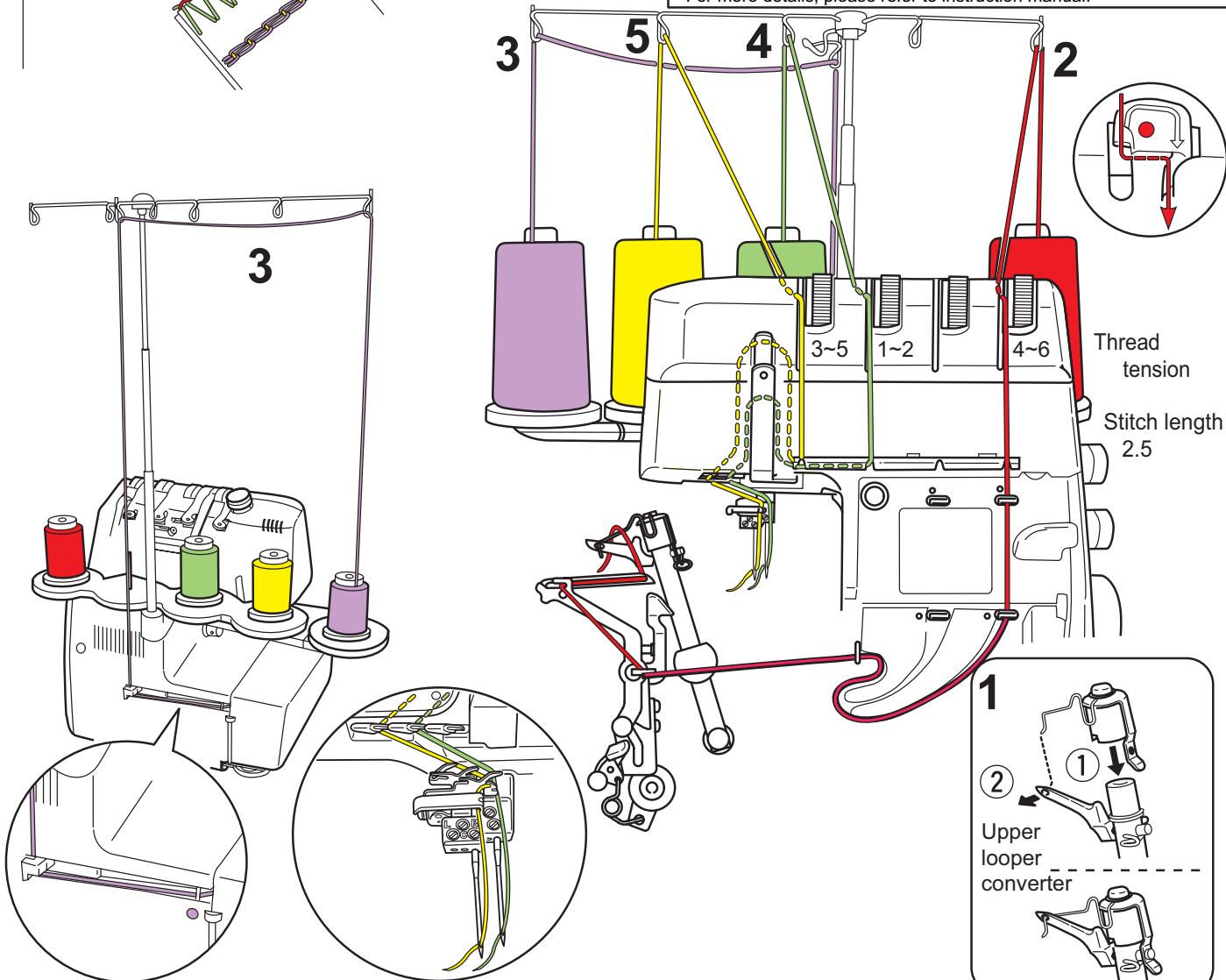
[1-right needle, 2-thread overlock and chain stitch]



Please thread in numerical order 2~5.

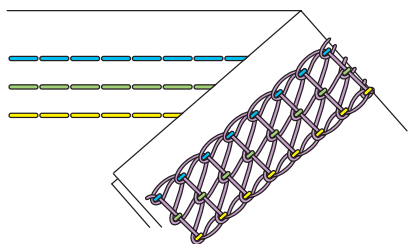
Threading preparations

1. Switch the machine off. (power switch "O")
 2. Pull the release lever forward to activate the upper looper. (Page 44)
 3. Push the button to lower the upper knife arm. (Page 44)
 4. Lower the upper knife. (Page 12)
 5. Attach the knife guard. (Page 45)
- * For more details, please refer to instruction manual.



Treading Chart

3-needle, 4-thread cover stitch

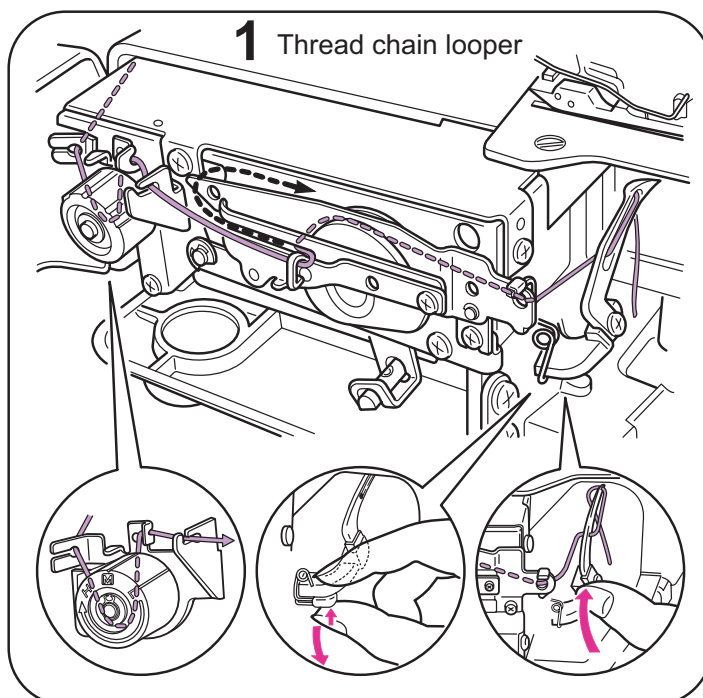
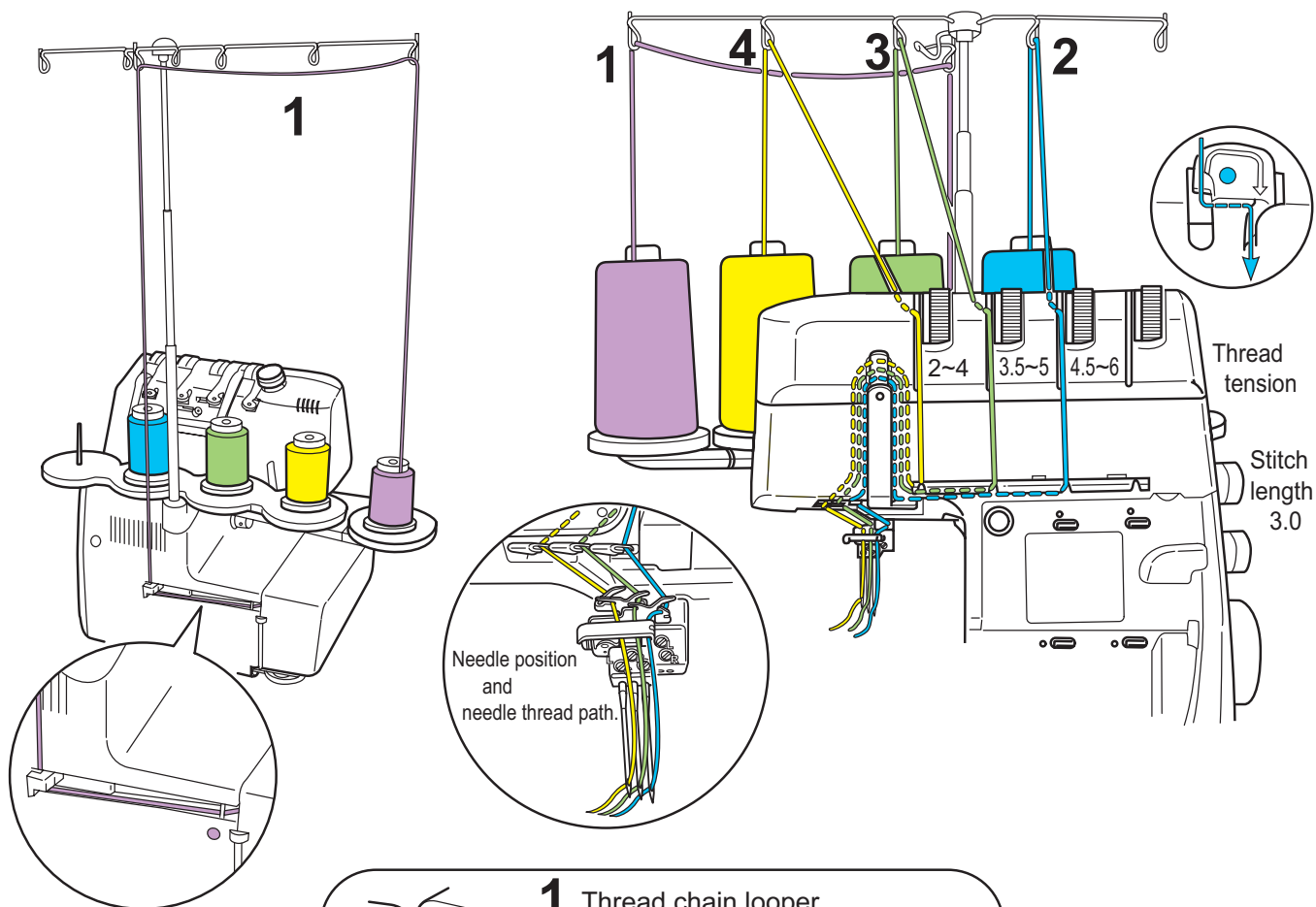


Threading preparations

1. Switch the machine off. (power switch "O")
2. Press release lever back to deactivate the upper looper. (Page 44)
3. Raise the upper knife. (Page 12)
4. Pull the lever and raise the upper knife arm. (Page 44)
5. Attach the extension plate. (Page 45)

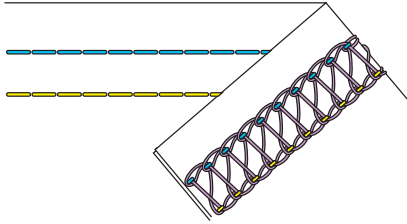
* For more details, please refer to instruction manual.

Please thread in numerical order 1~4.



Treading Chart

2-needle, 3-thread cover stitch (wide L, R)

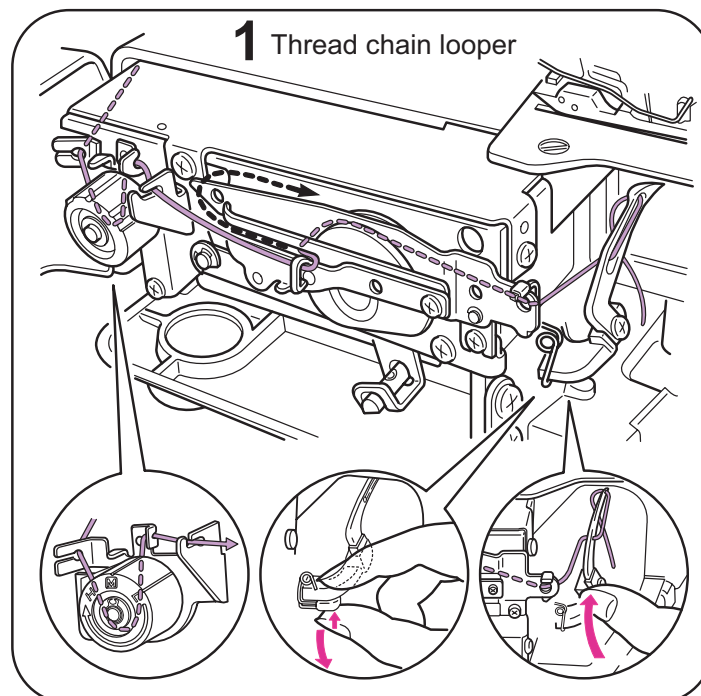
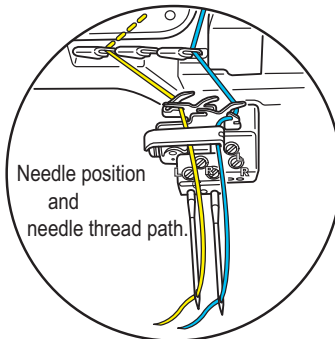
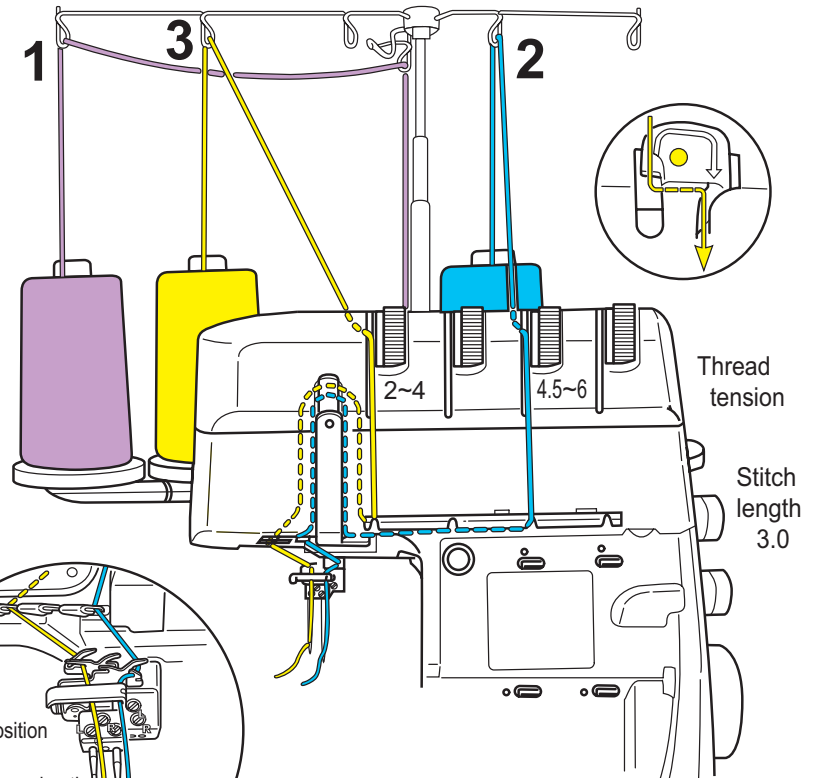
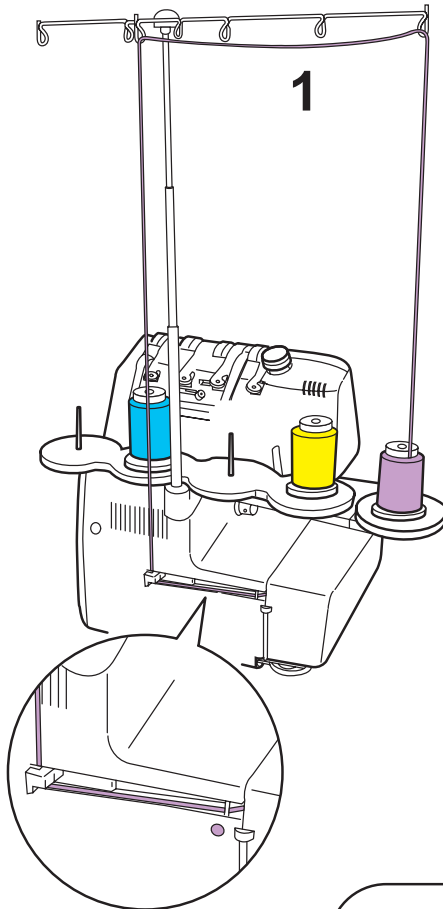


Threading preparations

1. Switch the machine off. (power switch "O")
2. Press release lever back to deactivate the upper looper. (Page 44)
3. Raise the upper knife. (Page 12)
4. Pull the lever and raise the upper knife arm. (Page 44)
5. Attach the extension plate. (Page 45)

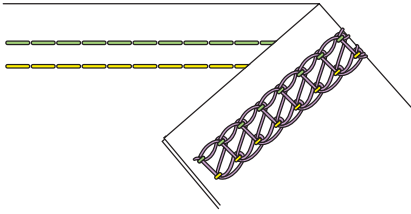
* For more details, please refer to instruction manual.

Please thread in
numerical order 1~3.



Treading Chart

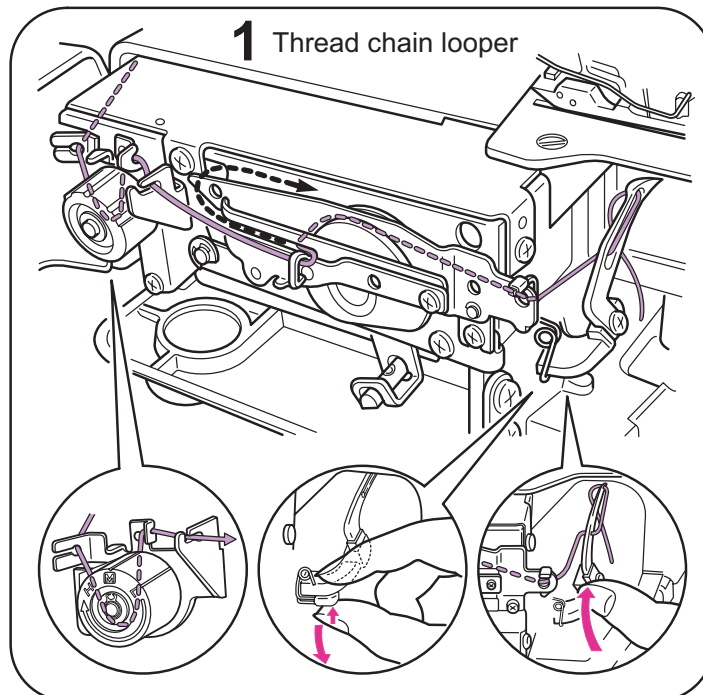
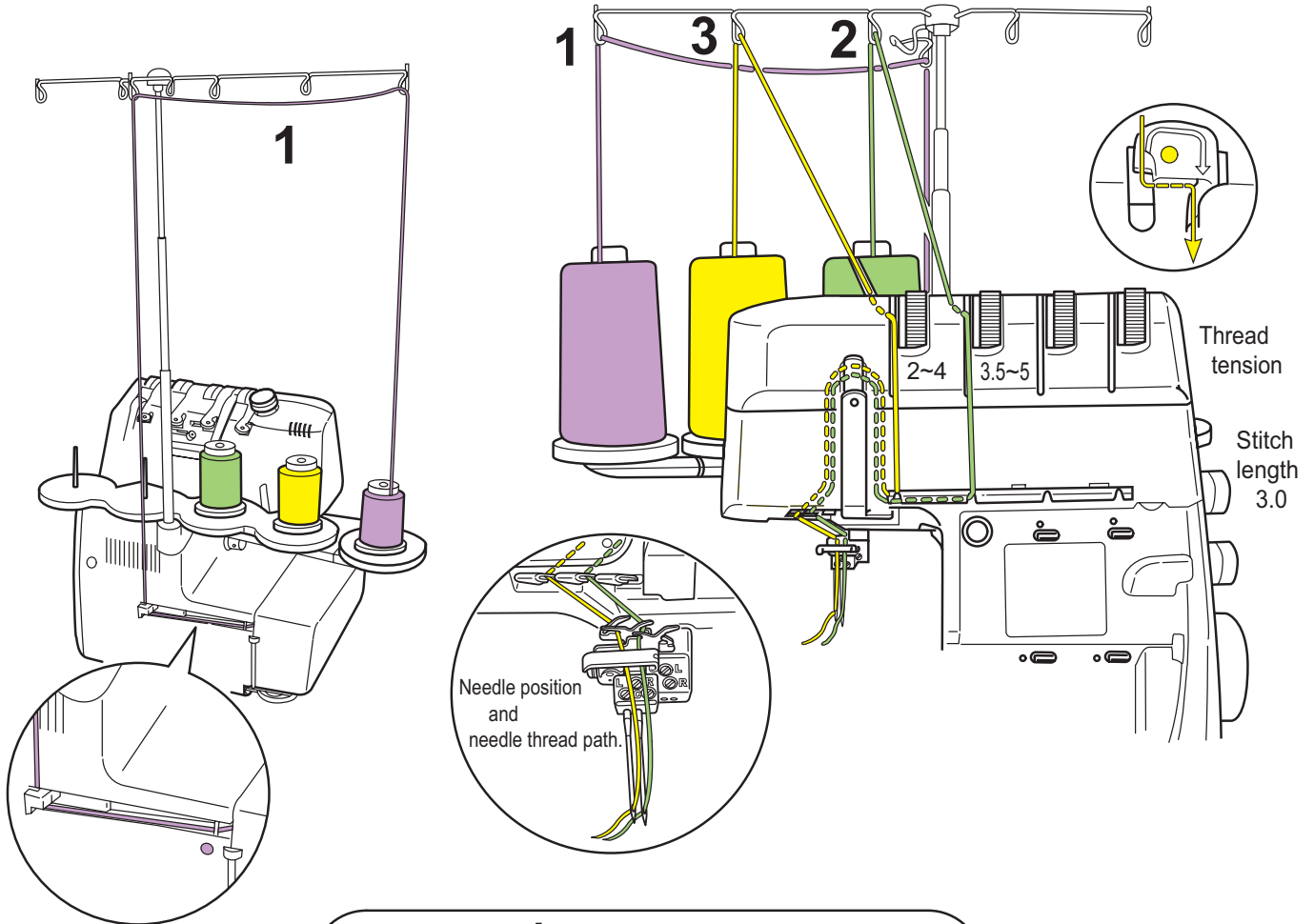
2-needle, 3-thread cover stitch (narrow L, C)



Threading preparations

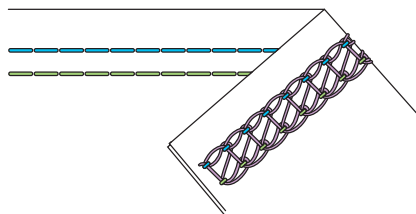
1. Switch the machine off. (power switch "O")
 2. Press release lever back to deactivate the upper looper. (Page 44)
 3. Raise the upper knife. (Page 12)
 4. Pull the lever and raise the upper knife arm. (Page 44)
 5. Attach the extension plate. (Page 45)
- * For more details, please refer to instruction manual.

Please thread in
numerical order 1~3.



Treading Chart

2-needle, 3-thread cover stitch (narrow C, R)



Threading preparations

1. Switch the machine off. (power switch "O")
2. Press release lever back to deactivate the upper looper. (Page 44)
3. Raise the upper knife. (Page 12)
4. Pull the lever and raise the upper knife arm. (Page 44)
5. Attach the extension plate. (Page 45)

* For more details, please refer to instruction manual.

Please thread in
numerical order 1~3.

